



# UNFALL STATISTIK



KURATORIUM  
FÜR VERKEHRS  
SICHERHEIT

# 2004

## English Version

# Road Traffic Accidents in Austria

Series: "Verkehr in Österreich"  
Edition No. 37

ISSN 1026-3969



Series: "Verkehr in Österreich"

Edition No. 37

# Statistics of Road Accidents 2004

Issued by

**Austrian Safety and Prevention Board**  
Institute for Road Accident Statistics

in co-operation with

**Bundesministerium für Inneres (BMI)**

with friendly assistance of

**Allgemeine Unfallversicherungsanstalt (AUVA)**

Vienna, March 2005

## **Imprint**

Publisher:  
Austrian Safety and Prevention Board  
Institute for Road Accident Statistics  
A-1030 Wien, Ölzeltgasse 3  
Phone: (+43 -1) 717 70 - 0  
Fax: (+43 -1) 717 70 - 195  
Data source: STATISTIK AUSTRIA  
Editorial staff : DI Stefan Höglinger, Michael Peleschka  
Art design: Mag. Jörg Gaisbauer

Vienna, March 2005

---

For further questions and feedback please contact  
Austrian Safety and Prevention Board  
Institute for Road Accident Statistics  
Mr. DI Stefan Höglinger  
A-1030 Wien, Ölzeltgasse 3  
Phone: (+43 -1) 717 70 - 131; Email: stefan.hoeglinger@kfv.at  
More information can be found on our homepage: <http://www.kfv.at>

Statistics are no comfort to those who have lost a beloved person. It makes no difference if more or less accidents happen - those concerned have to live with their tragedy. Still, annual statistics are an important indicator for the Austrian Road Safety Board. By analysing accidents and finding out why, where and how they happened we are able to propose concerted measures for improvement and thus help to save lives and avoid suffering.

We already earn the crops of some of these implemented measures. Since the seventies a continuous decrease in fatalities can be observed. 2.948 people died in 1972, 878 persons lost their lives in 2004. But there could be even less injuries and fatalities: The Austrian Road safety programme contains an effective package of measures that takes us further to our goal of "50% less fatalities until 2010". Unfortunately we also have to accept the fact that we did not reach the target for 2004 (755 dead, 37.110 accidents). The largest proportion of killed and injured car passengers still involves young drivers between the ages of 18 to 24. Too many times alcohol plays a major role in these accidents. Negative tendencies can be seen if we look at 15-year old moped drivers: since 2002 the number of accidents, injured and killed has risen dramatically. We also need to assess the reasons why accidents of children on crosswalks increased considerably. Speeding and insufficient safe following distances between vehicles can have disastrous consequences, as the increase in fatalities on motorways indicates.

In 2004 several road safety measures were implemented that set direction for the future. Austria's first Section Control system has been installed in Vienna's "Kaisermühlentunnel" and noticeably reduced the number of accidents there. Also the second system in the Wechsel-area on the motorway A2 delivers promising results. The introduction of a so-called penalty point system - required by the Road Safety Board for many years - was accepted by the Austrian Parliament in February 2005 and will come into force on 1st July. For all 15-year old moped drivers it is now obligatory to attend a six hours compulsory driver training course.

Thus some of the road safety proposals made by the Austrian Road Safety Board - that celebrated its 45th anniversary in 2004 - were implemented and realised. But there is still a whole lot more up our sleeve for a better interaction between road infrastructure, vehicle technology and human behaviour and training. This edition of the yearly accident statistic shall serve as a support, resource and impulse for further thoughts and discussions among experts, decision makers and interested private parties.



A stylized, handwritten signature in blue ink, consisting of several fluid, connected strokes.

Dr. Othmar Thann  
Director - Austrian Safety and Prevention Board

# table of contents

<b>Evolution</b> .....	<b>8</b>
Overview 2004 .....	8
Road accidents .....	11
<b>Location of accident</b> .....	<b>15</b>
Administrative districts .....	15
<b>Participation of traffic</b> .....	<b>16</b>
Pedestrians .....	20
Cyclists .....	23
Powered two-wheelers .....	24
Passenger cars .....	32
Lorries .....	36
<b>Age Groups</b> .....	<b>37</b>
Children and pupils .....	44
Seniors .....	48
<b>Accident types and causes</b> .....	<b>50</b>

# contents

---

<b>Special issues</b> .....	<b>52</b>
Alcohol related accidents .....	52
Speed monitoring .....	56
Foreigners .....	57
<b>International</b> .....	<b>58</b>
<b>Statistical parameters / Exposure data</b> .....	<b>62</b>
Demography .....	62
Substructures of traffic .....	65
International .....	66
Security precautions .....	67
Rail - Road .....	70
<b>Publications</b> .....	<b>71</b>
<b>Glossary</b> .....	<b>73</b>

# evolution

## ROAD ACCIDENTS 2004

Table: Summary of road accident data 2004

Criteria	Quantity
Accidents with damage only	-
Accidents with damage to persons	42.657
Casualties	56.735
Accidents with personal injuries, excluding fatalities	42.161
Injuries	55.857
Accidents with fatalities	818
Fatalities	878
Severely injured	7.591
Slightly injured	41.705
Severity of injury unknown	6.561

\*) Recording of accidents with damage only ended on 01.01.1995

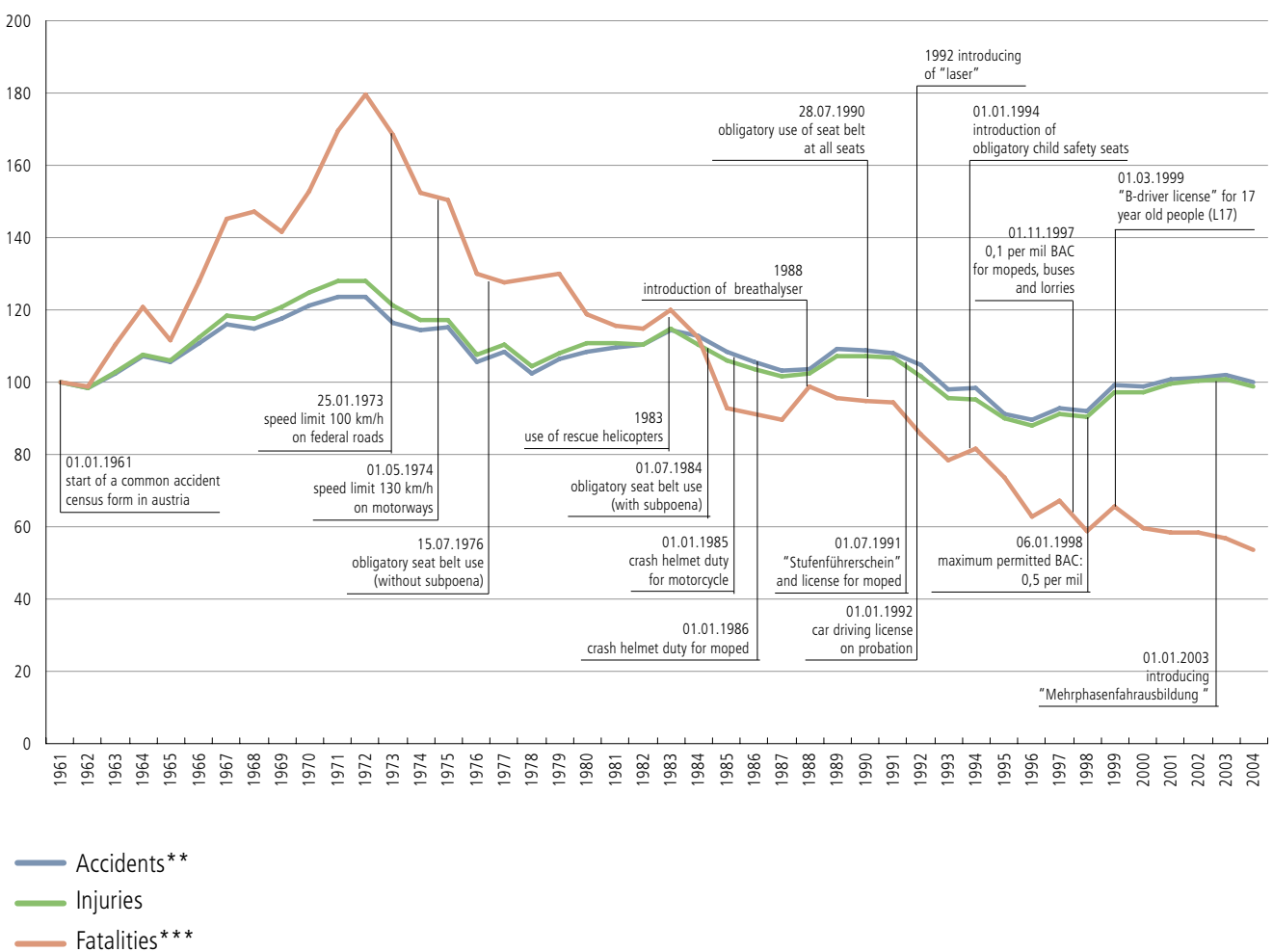
**Table: Accidents and casualties 1961–2004**

	Accidents*		Injuries		Fatalities**	
	Total	Change from previous year [%]	Total	Change from previous year [%]	Total	Change from previous year [%]
1961	42.653	-	56.491	-	1.640	-
1962	41.954	-1,6	55.533	-1,7	1.622	-1,1
1963	43.736	4,2	57.963	4,4	1.811	11,7
1964	45.784	4,7	60.720	4,8	1.983	9,5
1965	44.970	-1,8	59.987	-1,2	1.829	-7,8
1966	47.250	5,1	63.466	5,8	2.101	14,9
1967	49.539	4,8	66.988	5,5	2.380	13,3
1968	48.963	-1,2	66.335	-1,0	2.416	1,5
1969	50.189	2,5	68.135	2,7	2.320	-4,0
1970	51.631	2,9	70.415	3,3	2.507	8,1
1971	52.763	2,2	72.380	2,8	2.782	11,0
1972	52.696	-0,1	72.336	-0,1	2.948	6,0
1973	49.716	-5,7	68.382	-5,5	2.765	-6,2
1974	48.853	-1,7	66.207	-3,2	2.499	-9,6
1975	49.132	0,6	66.145	-0,1	2.467	-1,3
1976	45.016	-8,4	60.868	-8,0	2.131	-13,6
1977	46.183	2,6	62.266	2,3	2.091	-1,9
1978	43.592	-5,6	59.043	-5,2	2.112	1,0
1979	45.425	4,2	61.099	3,5	2.129	0,8
1980	46.214	1,7	62.625	2,5	1.951	-8,4
1981	46.690	1,0	62.518	-0,2	1.898	-2,7
1982	47.067	0,8	62.451	-0,1	1.883	-0,8
1983	48.825	3,7	64.784	3,7	1.967	4,5
1984	48.146	-1,4	62.362	-3,7	1.841	-6,4
1985	46.275	-3,9	59.977	-3,8	1.524	-17,2
1986	45.015	-2,7	58.448	-2,5	1.495	-1,9
1987	43.947	-2,4	57.352	-1,9	1.469	-1,7
1988	44.243	0,7	57.843	0,9	1.620	10,3
1989	46.565	5,2	60.623	4,8	1.570	-3,1
1990	46.338	-0,5	60.650	0,0	1.558	-0,8
1991	46.013	-0,7	60.355	-0,5	1.551	-0,4
1992	44.730	-2,8	57.473	-4,8	1.403	-9,5
1993	41.791	-6,6	53.987	-6,1	1.283	-8,6
1994	42.015	0,5	53.818	-0,3	1.338	4,3
1995	38.956	-7,3	50.764	-5,7	1.210	-9,6
1996	38.253	-1,8	49.673	-2,1	1.027	-15,1
1997	39.659	3,7	51.591	3,9	1.105	7,6
1998	39.225	-1,1	51.077	-1,0	963	-12,9
1999	42.348	8,0	54.967	7,6	1.079	12,0
2000	42.126	-0,5	54.929	-0,1	976	-9,5
2001	43.073	2,2	56.265	2,4	958	-1,8
2002	43.175	0,2	56.684	0,7	956	-0,2
2003	43.426	0,6	56.881	0,3	931	-2,6
2004	42.657	-1,8	55.857	-1,8	878	-5,7

\*) Accidents with damage to persons

\*\*) 30 days time limit corrections for fatalities in the years from 1966-1991, has been considered with +12%.

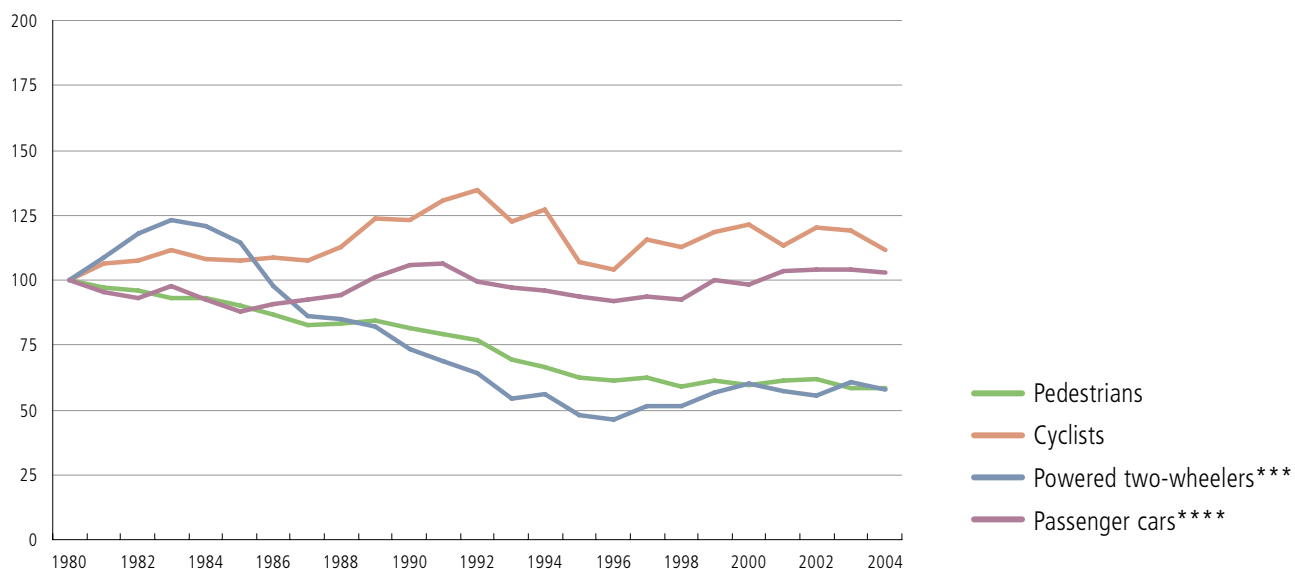
### Safety measures and evolution of accident rates 1961–2004\*



\*) Index: 1961: 100%

\*\*) Accidents with damage to persons

\*\*) 30 days time limit corrections for fatalities in the years from 1966-1991 has been considered with +12%.

**Casualties 1980 - 2004\***

**Table: Casualties 1980 - 2004\***

Year	Total		Pedestrians		Cyclists		Powered two-wheeler***		In passenger car****		Others	
	injuries**	fatalities**	injuries	fatalities**	injuries	fatalities**	injuries	fatalities**	injuries	fatalities**	injuries	fatalities**
1980	62.625	1.951	7.081	447	4.838	84	13.926	308	33.802	1.038	2.978	74
1981	62.518	1.898	6.947	360	5.110	114	15.109	340	32.286	997	3.066	87
1982	62.451	1.883	6.873	355	5.164	125	16.482	311	31.320	1.010	2.612	81
1983	64.784	1.967	6.566	419	5.409	94	17.220	328	33.010	1.025	2.579	101
1984	62.362	1.814	6.657	355	5.228	95	16.871	347	31.271	925	2.335	92
1985	59.977	1.524	6.482	314	5.179	99	15.986	283	29.847	763	2.483	66
1986	58.448	1.495	6.236	286	5.238	101	13.661	243	30.808	802	2.505	64
1987	57.352	1.469	5.964	246	5.210	86	12.019	241	31.482	833	2.677	63
1988	57.843	1.620	5.965	292	5.440	102	11.851	230	31.896	926	2.691	69
1989	60.623	1.570	6.051	292	5.994	86	11.456	246	34.393	865	2.729	81
1990	60.650	1.558	5.863	260	5.950	106	10.233	200	35.899	913	2.705	78
1991	60.355	1.551	5.684	260	6.351	93	9.548	205	36.060	913	2.712	81
1992	57.473	1.403	5.559	240	6.541	93	9.005	164	33.862	853	2.506	53
1993	53.987	1.283	5.005	202	5.943	102	7.526	173	33.132	747	2.381	59
1994	53.818	1.338	4.784	225	6.197	75	7.841	159	32.540	807	2.453	72
1995	50.764	1.210	4.491	200	5.184	77	6.638	152	31.968	708	2.483	73
1996	49.673	1.027	4.457	157	5.045	73	6.418	130	31.461	625	2.292	42
1997	51.591	1.105	4.542	156	5.614	66	7.116	168	31.861	667	2.458	48
1998	51.077	963	4.256	165	5.505	57	7.177	120	31.679	565	2.460	56
1999	54.967	1.079	4.427	182	5.756	68	7.904	151	34.156	614	2.724	64
2000	54.929	976	4.338	140	5.912	62	8.376	156	33.594	549	2.709	69
2001	56.265	958	4.494	117	5.509	55	8.014	144	35.470	570	2.778	72
2002	56.684	956	4.512	160	5.837	80	7.782	135	35.762	524	2.791	57
2003	56.881	931	4.253	132	5.804	56	8.516	156	35.722	524	2.586	63
2004	55.857	878	4.270	132	5.422	58	8.046	142	35.448	480	2.671	66

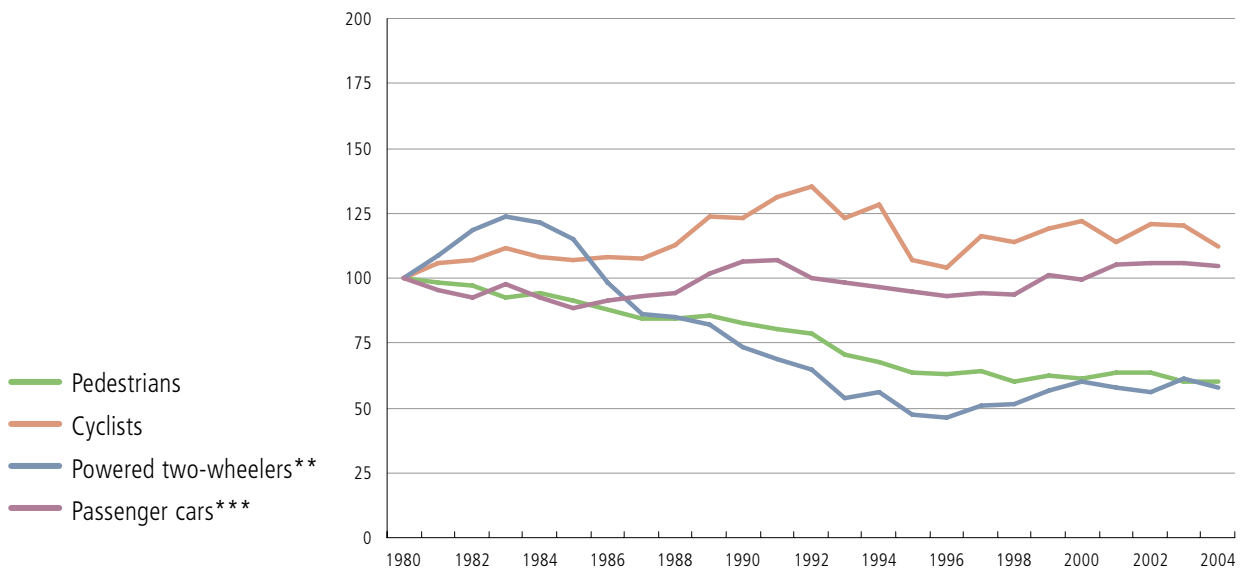
\*) Index: 1980: 100%

\*\*) 30 days time limit corrections for fatalities in the years from 1966-1991 has been considered with +12%.

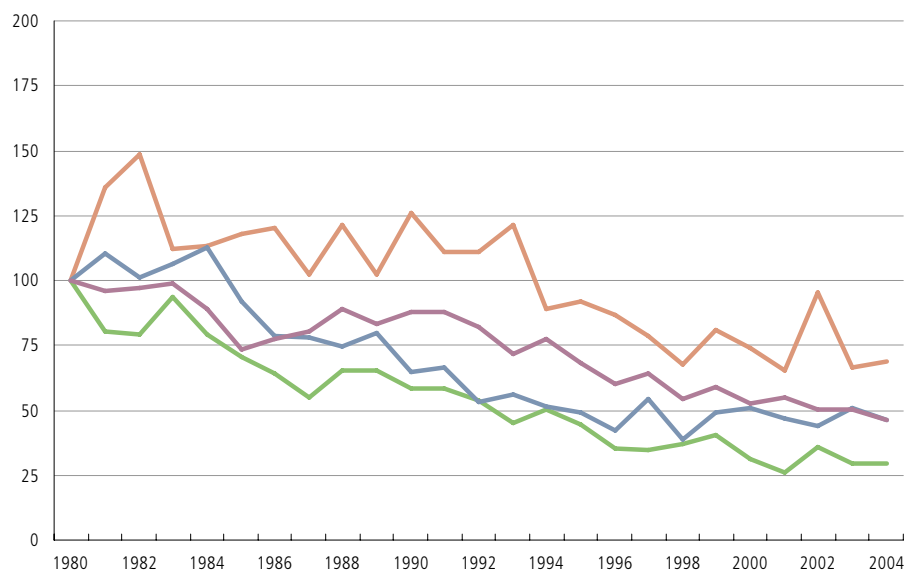
\*\*\*) Including mopeds, motorcycles, since 1992 "Leichtmotorräder"

\*\*\*\*\*) Including passenger cars with trailer, station wagon and taxi

### Injuries 1980 - 2004\*

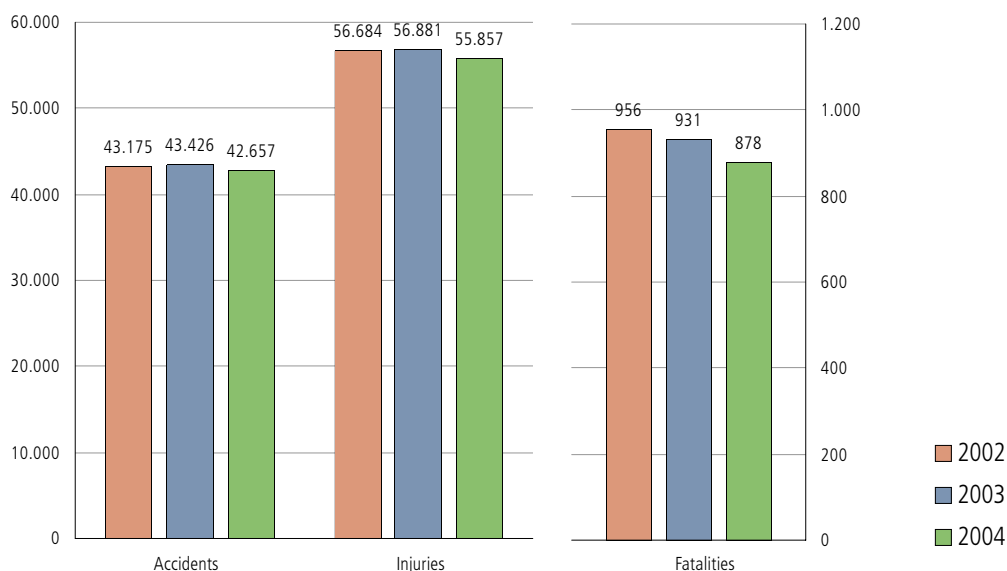


### Fatalities 1980 - 2004\*



\*) Index: 1980: 100%  
 \*\*) Including mopeds, motorcycles, since 1992 "Leichtmotorräder"  
 \*\*\*) Including passenger cars with trailer, station wagon and taxi

### Road accidents, injuries and fatalities 2002–2004



**Table:** Accidents, injuries and fatalities by federal state 2002–2004

	Accidents			Injuries			Fatalities		
	2002	2003	2004	2002	2003	2004	2002	2003	2004
BGLD	994	982	896	1.385	1.336	1.169	37	52	34
KTN	3.283	3.345	3.070	4.184	4.273	4.001	83	59	65
NÖ	7.787	7.637	7.483	10.342	10.208	9.879	261	277	269
OÖ	9.076	9.239	9.103	12.300	12.450	12.319	176	174	153
SBG	2.903	3.044	3.067	3.836	3.921	3.994	58	60	81
STMK	7.557	7.552	7.305	9.719	9.714	9.426	163	183	138
TIROL	4.455	4.473	4.331	5.870	5.903	5.792	100	64	64
VBG	1.838	1.792	1.840	2.336	2.259	2.294	33	17	31
WIEN	5.282	5.362	5.562	6.712	6.817	6.983	45	45	43
<b>AUSTRIA</b>	<b>43.175</b>	<b>43.426</b>	<b>42.657</b>	<b>56.684</b>	<b>56.881</b>	<b>55.857</b>	<b>956</b>	<b>931</b>	<b>878</b>

**Table:** Selected figures 2002 - 2004

	2002	2003	2004
Accidents	43.175	43.426	42.657
Injuries	56.684	56.881	55.857
Fatalities	956	931	878
<b>ACCIDENTS WITH CHILDREN*</b>	3.749	3.749	3.543
Children injuries	4.023	4.074	3.850
Children fatalities	25	37	22
<b>ACCIDENTS WITH ACTIVE INVOLVED CHILDREN</b>	2.132	2.086	1.951
Children injuries	2.029	1.990	1.855
Children fatalities	9	15	13
<b>ACCIDENTS ON THE WAY**</b>	499	507	454
Pupil injuries	518	556	465
Pupil fatalities	3	2	5
<b>ACCIDENTS WITH YOUTH***</b>	19.031	19.234	18.946
Youth injuries	17.566	17.645	17.434
Youth fatalities	215	215	206
<b>ACCIDENTS WITH SENIORS****</b>	5.658	5.766	5.639
Senior injuries (as pedestrians or driver)	3.414	3.489	3.321
Senior fatalities (as pedestrians or driver)	186	172	156
Accidents with pedestrians	4.650	4.371	4.408
Pedestrian injuries	4.512	4.253	4.270
Pedestrian fatalities	160	132	132
<b>ACCIDENTS WITH POWERED TWO-WHEELERS (DRIVER OR PASSENGER)</b>			
Cyclist injuries	5.837	5.804	5.422
Cyclist fatalities	80	56	58
Injuries moped	4.392	4.729	4.561
Fatalities moped	45	47	44
Injuries "Kleinmotorrad"	42	41	43
Fatalities "Kleinmotorrad"	1	0	0
Injuries "Leichtmotorrad"	336	204	118
Fatalities "Leichtmotorrad"	7	3	0
Injuries motorcycle	3.012	3.542	3.324
Fatalities motorcycle	82	106	98
<b>ACCIDENTS BY ALCOHOL*****</b>			
Alcohol related accidents	2.736	2.841	2.835
Alcoholised participants	2.842	2.962	2.960
Injuries	3.901	4.020	4.017
Fatalities	92	84	67

\*) Children: 0–14 years

\*\*) Pupil: 6–15 years

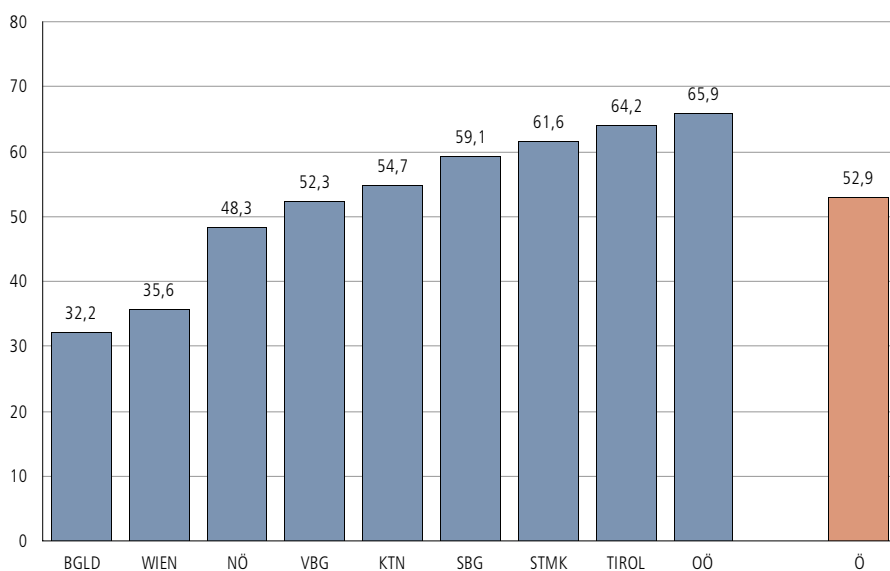
\*\*\*) Youth: 15–24 years

\*\*\*\*) Seniors: 65 years and older

\*\*\*\*\*) Since 6. 1. 1998 there is a new BAC limit (0,5-per mil)

# Location

## Accidents per 10.000 inhabitants

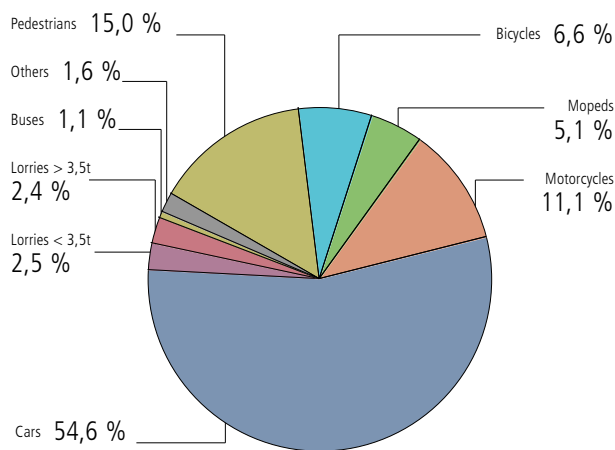


**Table:** Accidents and casualties by federal state

	Inhabitants	Accidents	Injuries	Fatalities	Accidents[%]	Injuries[%]	Fatalities[%]
BGLD	278.600	896	1.169	34	2,1	2,1	3,9
KTN	561.126	3.070	4.001	65	7,2	7,2	7,4
NÖ	1.549.658	7.483	9.879	269	17,5	17,7	30,6
OÖ	1.381.993	9.103	12.319	153	21,3	22,1	17,4
SBG	518.587	3.067	3.994	81	7,2	7,2	9,2
STMK	1.186.379	7.305	9.426	138	17,1	16,9	15,7
TIROL	675.070	4.331	5.792	64	10,2	10,4	7,3
VBG	351.570	1.840	2.294	31	4,3	4,1	3,5
WIEN	1.562.482	5.562	6.983	43	13,0	12,5	4,9
AUSTRIA	8.065.465	42.657	55.857	878	100,0	100,0	100,0

# participation at traffic

Fraction of fatalities by participation



Fraction of injuries by participation

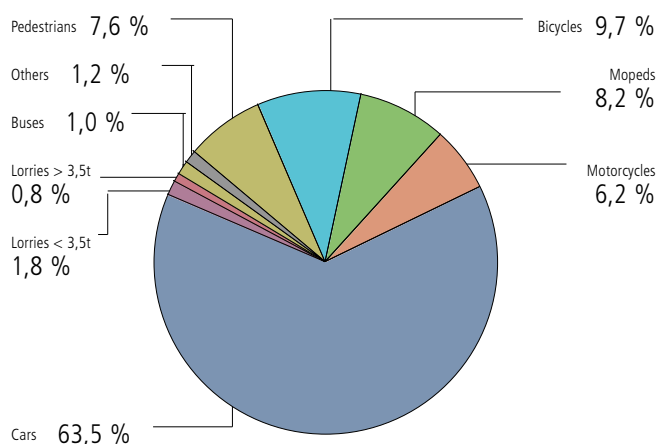
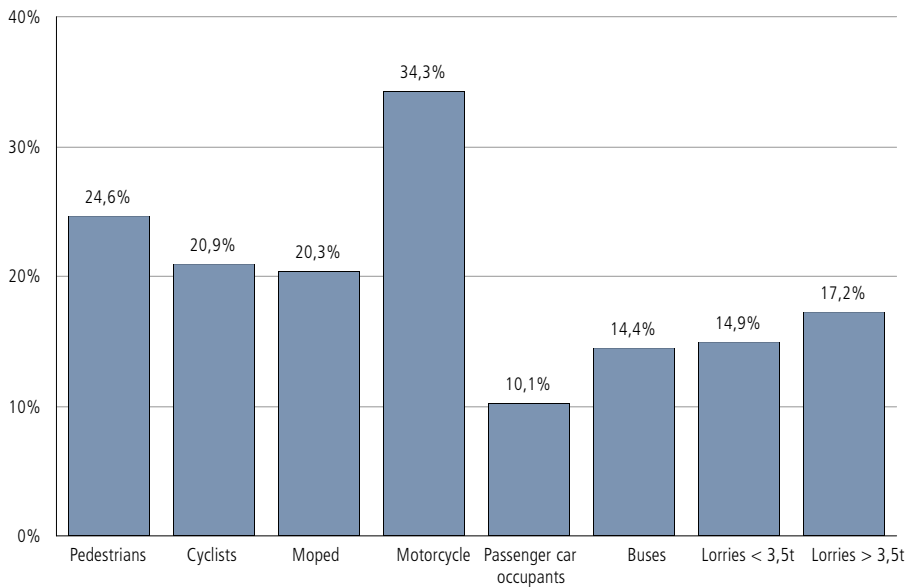


Table: Accidents, involved vehicles or pedestrians, injuries and fatalities by participation

	Accidents	Involved vehicles or pedestrians	Fatalities			Injuries		
			Drivers or Pedestrians	Passengers	Total	Drivers or Pedestrians	Passengers	Total
Pedestrians	4.408	4.613	132	0	132	4.270	0	4.270
Game and sports equipment	137	139	0	0	0	118	0	118
Bicycle	5.525	5.962	58	0	58	5.391	31	5.422
Moped (Motorfahrrad)	4.228	4.342	42	2	44	3.999	562	4.561
“Kleinmotorrad”	45	45	0	0	0	38	5	43
“Leichtmotorrad”	122	123	0	0	0	112	6	118
Motorcycle	3.198	3.317	93	5	98	2.986	338	3.324
Passenger car ( including station wagon taxi)	35.609	54.588	367	112	479	24.473	10.915	35.388
Passenger car with trailer	109	111	1	0	1	32	28	60
Public transit bus (Obus)	418	422	0	0	0	4	298	302
Omnibus	371	372	0	9	9	27	244	271
Tramway	368	373	0	0	0	10	164	174
Railway	90	90	0	0	0	5	3	8
Lorry < 3,5t without trailer	2.242	2.319	16	4	20	681	258	939
Lorry < 3,5t with trailer	86	88	0	2	2	28	11	39
Lorry > 3,5t without trailer	1.026	1.046	7	1	8	173	49	222
Lorry < 3,5t with trailer	500	512	2	0	2	70	17	87
Tractor trailer	688	733	9	2	11	139	7	146
Tank lorry without trailer	13	13	0	0	0	1	0	1
Tank lorry with trailer, Tank tractor train fzg.	27	27	0	0	0	6	0	6
Motor tractor, work machine without trailer	280	281	4	0	4	75	20	95
Motor tractor, work machine with trailer	239	240	2	1	3	52	10	62
Emergency vehicles	91	93	0	1	1	35	49	84
Others	313	314	5	1	6	85	32	117
<b>Total</b>	<b>42.657</b>	<b>80.163</b>	<b>738</b>	<b>140</b>	<b>878</b>	<b>42.810</b>	<b>13.047</b>	<b>55.857</b>

### Fraction of fatalities and severe injuries by number of casualties



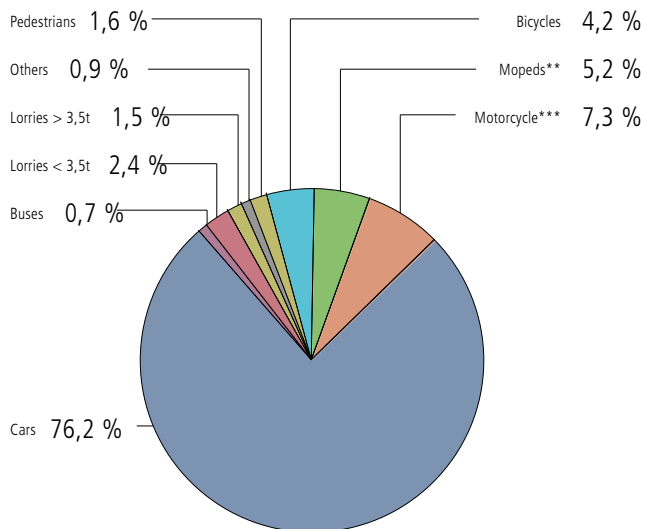
**Table: Severity of injuries by participation**

	Pedestrians	Cyclists	Moped*s*	Motorcycles**	Car passengers	Buses	Lorries <3,5t	Lorries >3,5t	Others	Total
Fatalities	132	58	44	98	480	9	22	21	14	878
Severe injuries	952	1.089	900	1.115	3.165	75	127	62	106	7.591
Severity of injuries unknown	394	594	498	463	4.268	42	154	83	65	6.561
Slight injuries	2.924	3.739	3.206	1.864	28.015	456	697	317	487	41.705
Injuries total	4.270	5.422	4.604	3.442	35.448	573	978	462	658	55.857
Casualties	4.402	5.480	4.648	3.540	35.928	582	1.000	483	672	56.735
Non injuries	211	515	309	250	29.850	763	1.683	1.924	973	36.478

\*) including "Kleinmotorrad"

\*\*) including "Leichtmotorrad"

### Injuries: outside urban area



### Injuries: inside urban area

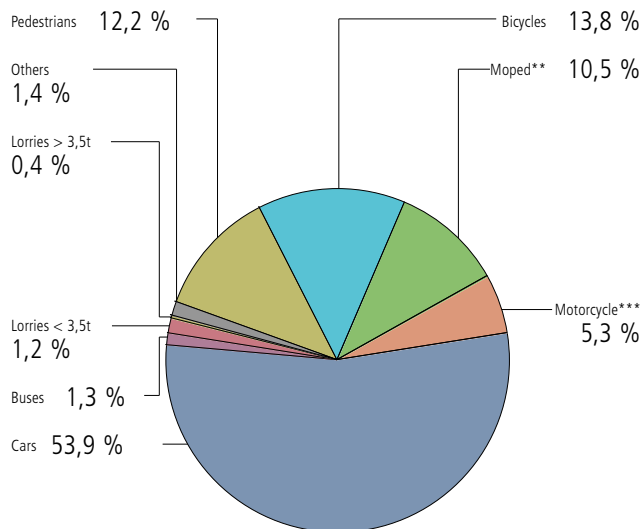
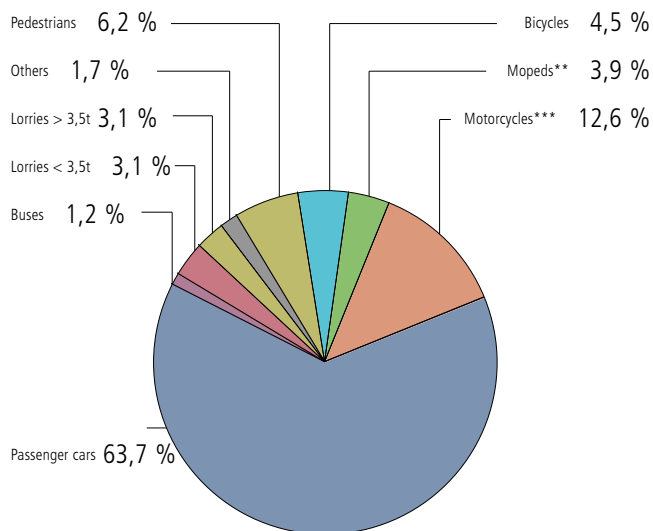


Table: Number of injuries by location and participation

	Injuries		Total
	Inside urban area	Outside urban area	
Pedestrians	3.895	375	4.270
Bicycles	4.411	1.011	5.422
Moped**	3.369	1.235	4.604
Motorcycle***	1.697	1.745	3.442
Passenger cars	17.257	18.191	35.448
Buses	415	158	573
Lorries < 3,5t	387	591	978
Lorries > 3,5t	109	353	462
Others	443	215	658
<b>Total</b>	<b>31.983</b>	<b>23.874</b>	<b>55.857</b>

\*\*\*) including "Kleinmotorrad"  
 \*\*) including "Leichtmotorrad"

Fatalities: outside urban area



Fatalities: inside urban area

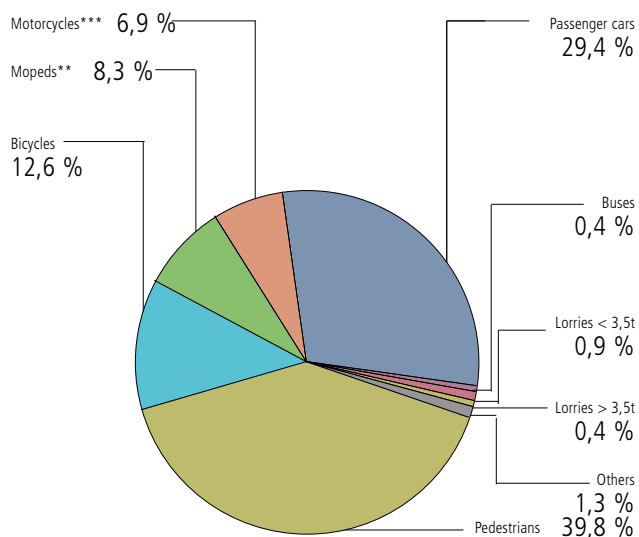


Table: Number of fatalities by location and participation

	Fatalities		Total
	Inside urban area	Outside urban area	
Pedestrians	92	40	132
Bicycles	29	29	58
Moped**	19	25	44
Motorcycle***	16	82	98
Passenger cars	68	412	480
Buses	1	8	9
Lorries < 3,5t	2	20	22
Lorries > 3,5t	1	20	21
Others	3	11	14
<b>Total</b>	<b>231</b>	<b>647</b>	<b>878</b>

\*\* ) including "Kleinmotorrad"

\*\*\* ) including "Leichtmotorrad"

### Pedestrians - overview

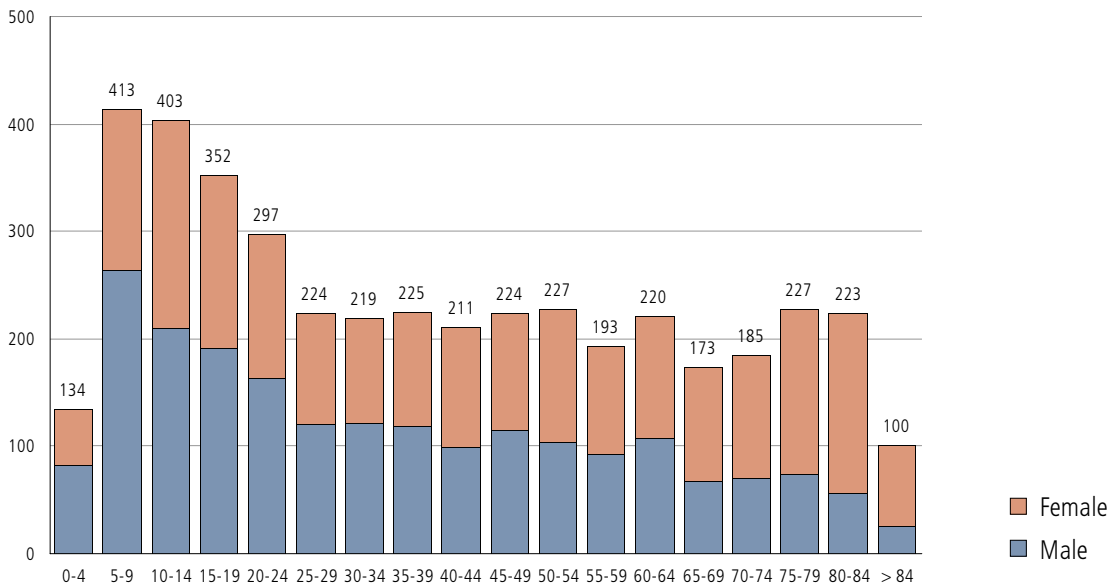
Table: Road accidents involving pedestrians

	2001	2001	2002	2003	2004
Accidents	4.449	4.559	4.650	4.371	4.408
Fatalities	140	117	160	132	132
Injuries	4.338	4.494	4.512	4.253	4.270

Table: Accidents with pedestrians by federal state - injuries and killed pedestrians

	Pedestrian accidents			Fraction per total accidents [%]		
	Accidents	Injuries	Fatalities	Accidents	Injuries	Fatalities
BGLD	73	73	3	8,1	6,2	8,8
KTN	279	274	13	9,1	6,8	20,0
NÖ	524	512	21	7,0	5,2	7,8
OÖ	748	729	23	8,2	5,9	15,0
SBG	280	259	10	9,1	6,5	12,3
STMK	587	555	18	8,0	5,9	13,0
TIROL	448	437	11	10,3	7,5	17,2
VBG	209	199	6	11,4	8,7	19,4
WIEN	1.260	1.232	27	22,7	17,6	62,8
AUSTRIA	4.408	4.270	132	10,3	7,6	15,0

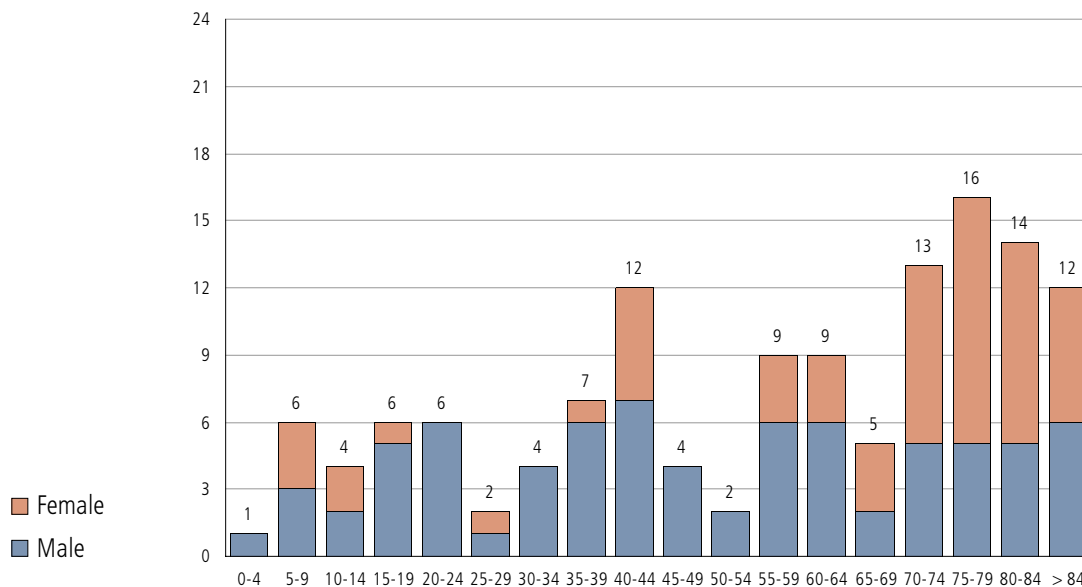
### Injured pedestrians by age and sex



**Table:** Injured pedestrians by age and sex

Injured pedestrians			
Age	Male	Female	Total
0-4	83	51	134
5-9	264	149	413
10-14	210	193	403
15-19	192	160	352
20-24	164	133	297
25-29	120	104	224
30-34	121	98	219
35-39	119	106	225
40-44	99	112	211
45-49	115	109	224
50-54	104	123	227
55-59	92	101	193
60-64	108	112	220
65-69	67	106	173
70-74	70	115	185
75-79	74	153	227
80-84	56	167	223
> 84	25	75	100
Unknown	9	11	20
<b>Total</b>	<b>2.092</b>	<b>2.178</b>	<b>4.270</b>

### Pedestrian fatalities by age and sex



**Table:** Pedestrian fatalities by age and sex

Age	Killed pedestrians		
	Male	Female	Total
0-4	1	0	1
5-9	3	3	6
10-14	2	2	4
15-19	5	1	6
20-24	6	0	6
25-29	1	1	2
30-34	4	0	4
35-39	6	1	7
40-44	7	5	12
45-49	4	0	4
50-54	2	0	2
55-59	6	3	9
60-64	6	3	9
65-69	2	3	5
70-74	5	8	13
75-79	5	11	16
80-84	5	9	14
> 84	6	6	12
Unknown	0	0	0
<b>Total</b>	<b>76</b>	<b>56</b>	<b>132</b>

## Cyclists-overview

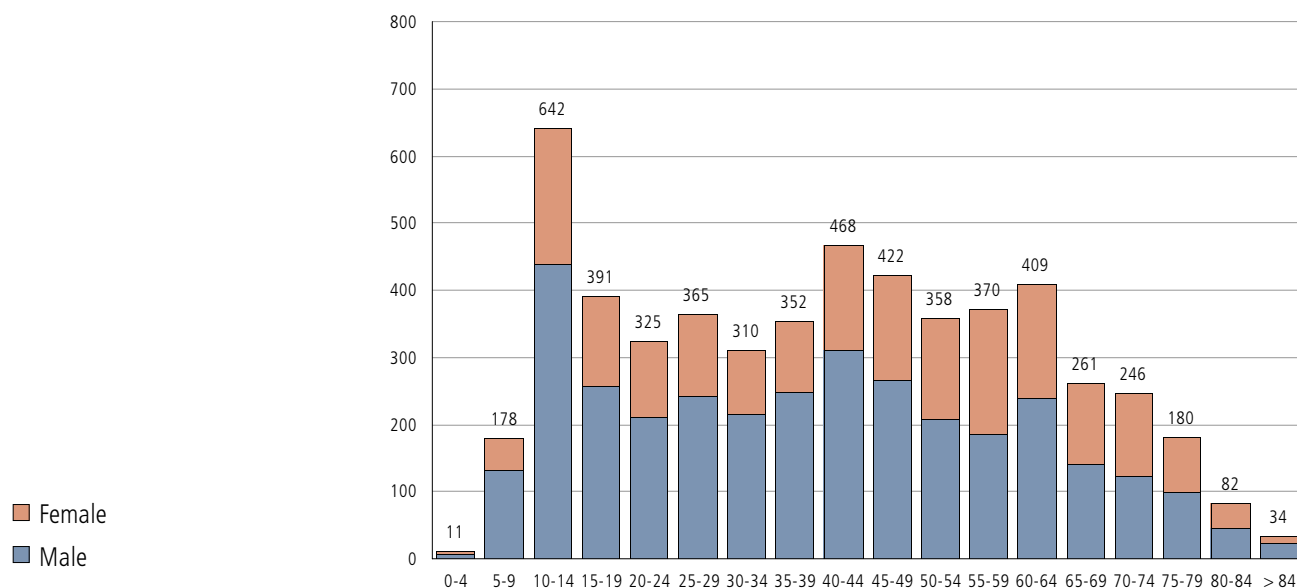
**Table: Accidents involving cyclists**

	2000	2001	2002	2003	2004
Accidents	5.968	5.626	5.930	5.899	5.525
Fatalities	62	55	80	56	58
Injuries	5.912	5.509	5.837	5.804	5.422

**Table: Accidents involving cyclists by federal state**

	Accidents involving cyclists			Ratio total accidents [%]		
	Accidents	Injuries	Fatalities	Accidents	Injuries	Fatalities
BGLD	91	95	0	10,2	8,1	0,0
KTN	435	421	2	14,2	10,5	3,1
NÖ	708	680	22	9,5	6,9	8,2
OÖ	1.116	1.106	11	12,3	9,0	7,2
SBG	537	534	7	17,5	13,4	8,6
STMK	887	874	6	12,1	9,3	4,3
TIROL	734	724	3	16,9	12,5	4,7
VBG	416	415	7	22,6	18,1	22,6
WIEN	601	573	0	10,8	8,2	0,0
<b>AUSTRIA</b>	<b>5.525</b>	<b>5.422</b>	<b>58</b>	<b>13,0</b>	<b>9,7</b>	<b>6,6</b>

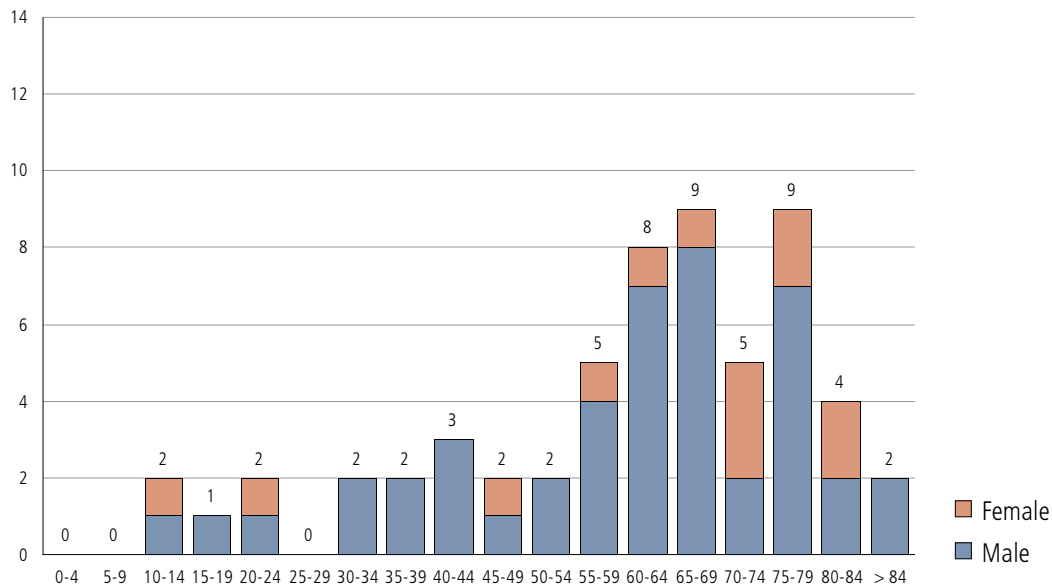
### Number of injured cyclists by age and sex



**Table:** Injured cyclists by age and sex

Age	Injured Cyclists		
	Male	Female	Total
0-4	6	5	11
5-9	131	47	178
10-14	439	203	642
15-19	257	134	391
20-24	209	116	325
25-29	241	124	365
30-34	215	95	310
35-39	248	104	352
40-44	311	157	468
45-49	266	156	422
50-54	207	151	358
55-59	186	184	370
60-64	238	171	409
65-69	140	121	261
70-74	122	124	246
75-79	98	82	180
80-84	44	38	82
> 84	22	12	34
Unknown	11	7	18
<b>Total</b>	<b>3.391</b>	<b>2.031</b>	<b>5.422</b>

### Number of cyclist fatalities by age and sex



**Table:** Cyclist fatalities by age and sex

Age	Cyclist fatalities		
	Male	Female	Total
0-4	0	0	0
5-9	0	0	0
10-14	1	1	2
15-19	1	0	1
20-24	1	1	2
25-29	0	0	0
30-34	2	0	2
35-39	2	0	2
40-44	3	0	3
45-49	1	1	2
50-54	2	0	2
55-59	4	1	5
60-64	7	1	8
65-69	8	1	9
70-74	2	3	5
75-79	7	2	9
80-84	2	2	4
> 84	2	0	2
Unknown	0	0	0
<b>Total</b>	<b>45</b>	<b>13</b>	<b>58</b>

## Powered two-wheelers\* – overview

**Table:** Accidents involving powered two-wheelers\*

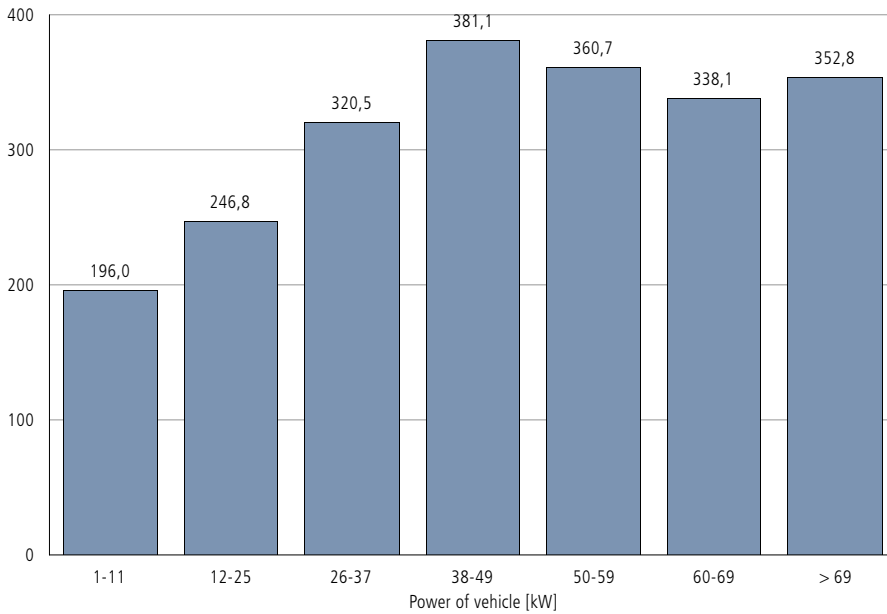
	2000	2001	2002	2003	2004
Mopeds including "Kleinmotorräder"					
Accidents	4.455	4.193	4.199	4.486	4.272
Fatalities	44	37	46	47	44
Injuries	4.723	4.477	4.434	4.770	4.604
Motorcycle including "Leichtmotorräder"					
Accidents	3.458	3.444	3.239	3.619	3.318
Fatalities	112	107	89	109	98
Injuries	3.653	3.564	3.348	3.746	3.442

**Table:** Killed and severely injured motorcycle drivers\*\* by vehicle power

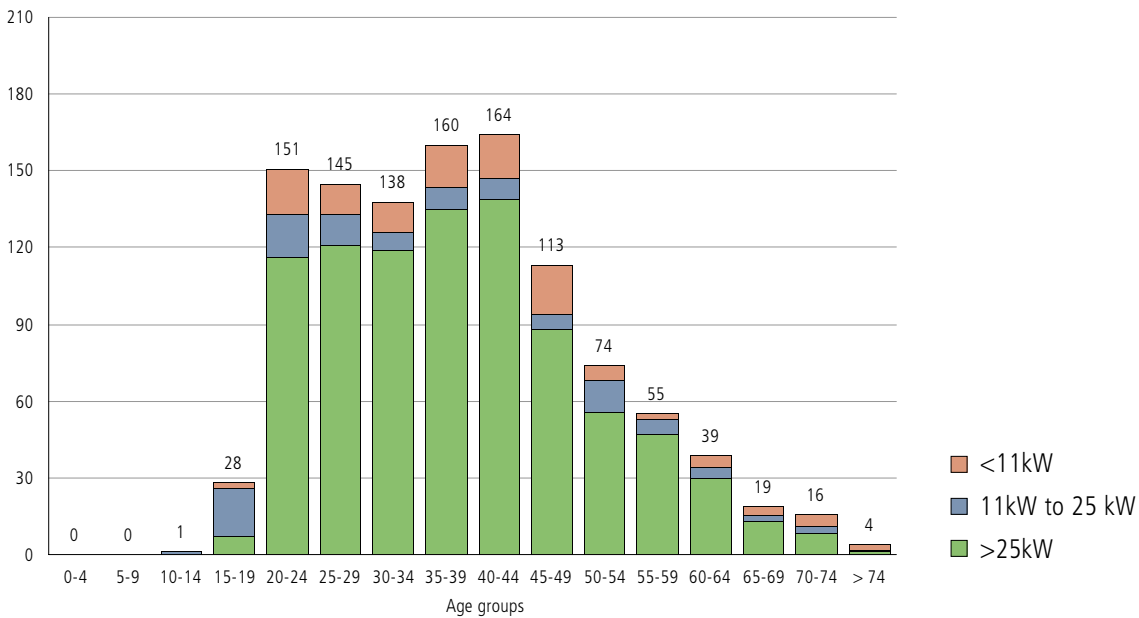
Motorpower [kW]	Driver of motorcycle			Per 1.000 participants
	Participants	Fatalities	Severely injured	Fatalities und severe injuries
1-11	250	4	45	196,0
12-25	385	4	91	246,8
26-37	440	11	130	320,5
38-49	370	13	128	381,1
50-59	341	9	114	360,7
60-69	281	9	86	338,1
> 69	1.077	37	343	352,8
Unknown	296	6	77	280,4
<b>Total</b>	<b>3.440</b>	<b>93</b>	<b>1.014</b>	<b>321,8</b>

\*) Mopeds, "Kleinmotorräder", Motorcycles and "Leichtmotorräder"  
\*\*) including drivers of "Leichtmotorräder"

### Motorcycle fatalities or severe injuries\* by vehicle power per 1.000 motorcyclists involved in accidents



### Motorcycle fatalities or severe injuries\* by vehicle power and age of driver



\*) including drivers of "Leichtmotorräder"

### Injured motorcyclists by age and sex

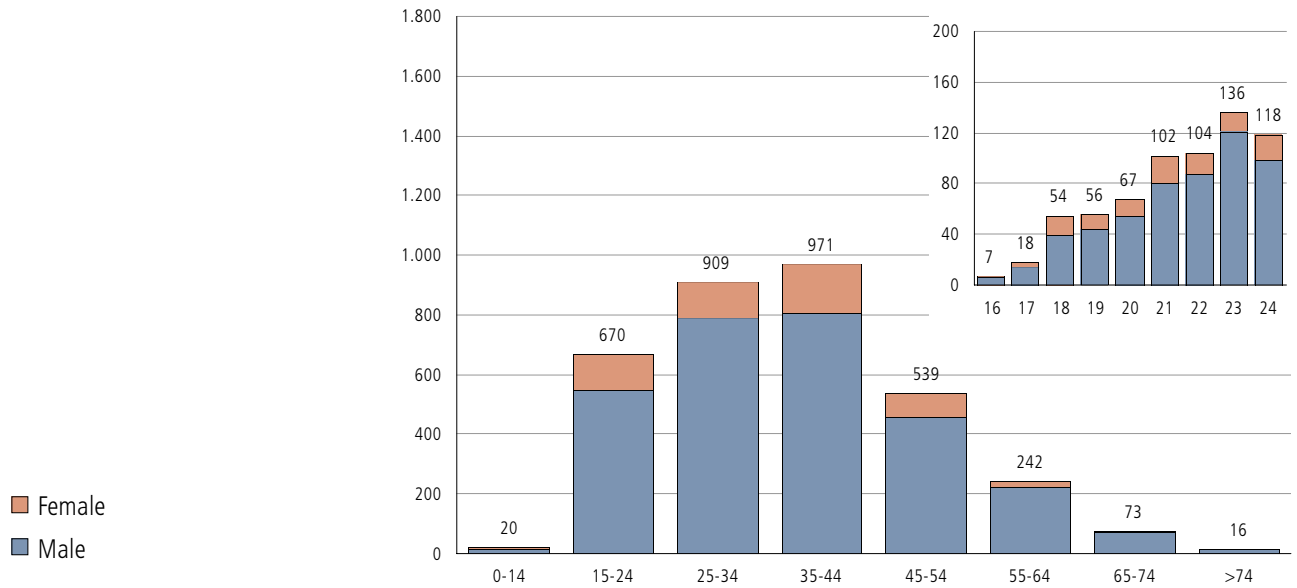
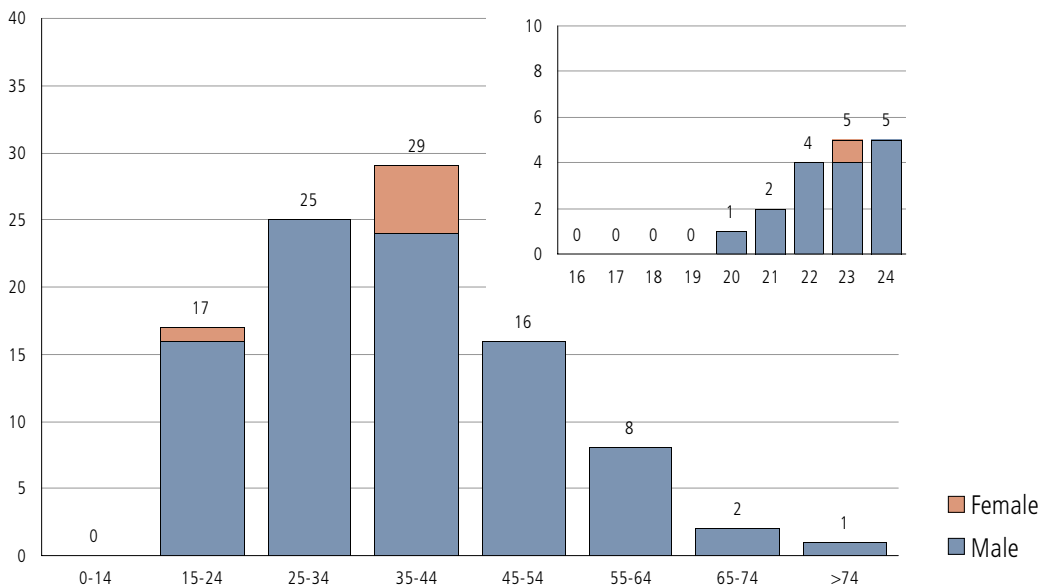


Table: Injured motorcyclists by age and sex

Age	Injuries					
	Male		Female		Total	
	Drivers	Passengers	Drivers	Passengers	Drivers	Passengers
0-14	1	13	0	6	1	19
15-19	88	20	13	22	101	42
20-24	428	13	44	42	472	55
25-29	387	6	39	28	426	34
30-34	391	3	34	21	425	24
35-39	405	4	39	41	444	45
40-44	393	1	43	45	436	46
45-49	284	0	22	33	306	33
50-54	173	0	6	21	179	21
55-59	109	0	5	15	114	15
60-64	109	1	0	3	109	4
65-69	41	0	0	0	41	0
70-74	29	0	1	2	30	2
> 74	13	0	0	3	13	3
Unknown	1	0	0	1	1	3
<b>Total</b>	<b>2.852</b>	<b>61</b>	<b>246</b>	<b>283</b>	<b>3.098</b>	<b>344</b>

### Motorcycle fatalities by age and sex



**Table:** Motorcycle fatalities by age and sex

Age	Fatalities					
	Male		Female		Total	
	Drivers	Passengers	Drivers	Passengers	Drivers	Passengers
0-14	0	0	0	0	0	0
15-19	0	0	0	0	0	0
20-24	16	0	0	1	16	1
25-29	14	0	0	0	14	0
30-34	11	0	0	0	11	0
35-39	19	0	0	0	19	0
40-44	5	0	1	4	6	4
45-49	6	0	0	0	6	0
50-54	10	0	0	0	10	0
55-59	4	0	0	0	4	0
60-64	4	0	0	0	4	0
65-69	1	0	0	0	1	0
70-74	1	0	0	0	1	0
> 74	1	0	0	0	1	0
Unknown	0	0	0	0	0	0
<b>Total</b>	<b>92</b>	<b>0</b>	<b>1</b>	<b>5</b>	<b>93</b>	<b>5</b>

### Moped injuries by age and sex

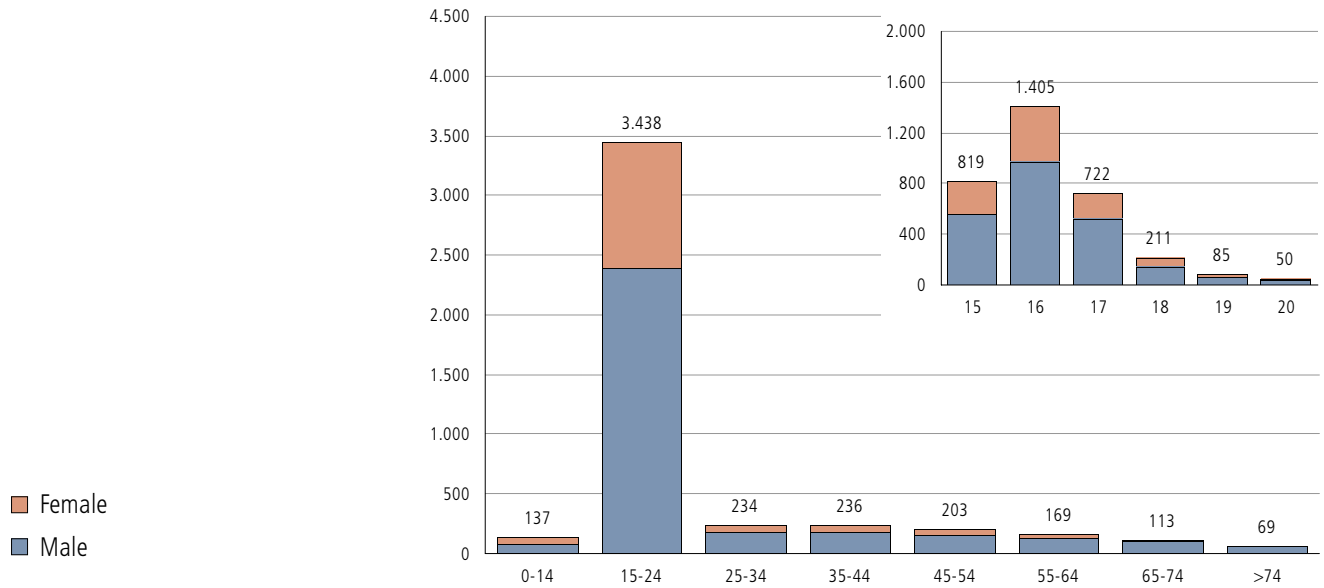


Table: Moped injuries by age and sex

Age	Injuries					
	Male		Female		Total	
	Drivers	Passengers	Drivers	Passengers	Drivers	Passengers
0-14	14	67	9	47	23	114
15-19	2,046	205	800	191	2,846	396
20-24	130	10	48	8	178	18
25-29	92	3	31	5	123	8
30-34	77	1	23	2	100	3
35-39	92	3	29	4	121	7
40-44	77	1	28	2	105	3
45-49	77	0	29	6	106	6
50-54	70	0	20	1	90	1
55-59	66	1	15	2	81	3
60-64	64	0	18	3	82	3
65-69	51	0	5	2	56	2
70-74	52	0	3	0	55	0
> 74	62	0	6	1	68	1
Unknown	3	0	0	2	9	1
<b>Total</b>	<b>2.973</b>	<b>291</b>	<b>1.064</b>	<b>276</b>	<b>4.037</b>	<b>567</b>

### Moped fatalities by age and sex

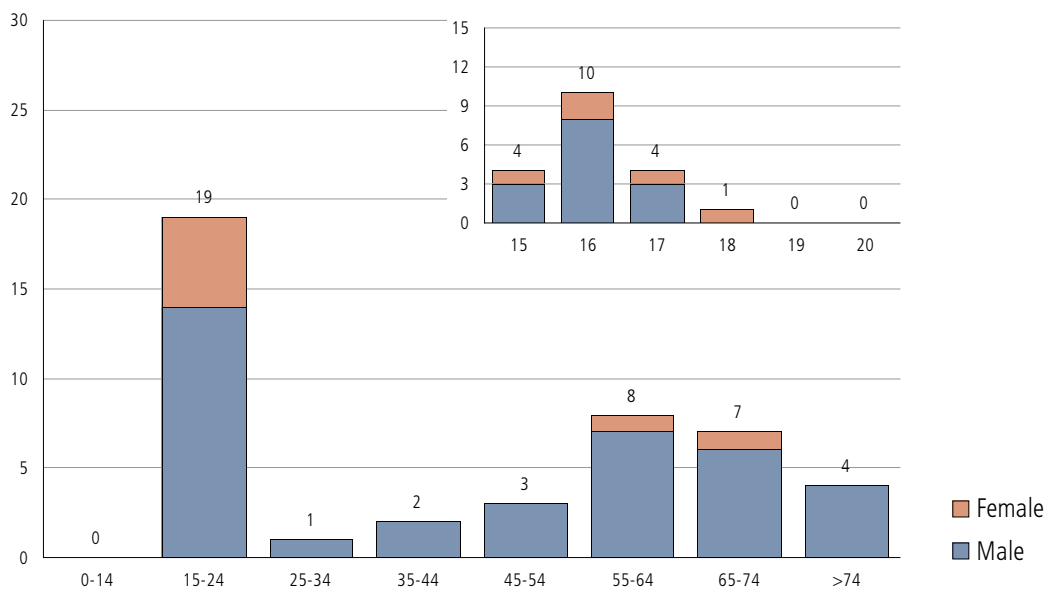


Table: Moped fatalities by age and sex

Age	Fatalities					
	Male		Female		Total	
	Drivers	Passengers	Drivers	Passengers	Drivers	Passengers
0-14	0	0	0	0	0	0
15-19	12	2	5	0	17	2
20-24	0	0	0	0	0	0
25-29	1	0	0	0	1	0
30-34	0	0	0	0	0	0
35-39	1	0	0	0	1	0
40-44	1	0	0	0	1	0
45-49	2	0	0	0	2	0
50-54	1	0	0	0	1	0
55-59	5	0	0	0	5	0
60-64	2	0	1	0	3	0
65-69	5	0	0	0	5	0
70-74	1	0	1	0	2	0
> 74	4	0	0	0	4	0
Unknown	0	0	0	0	0	0
<b>Total</b>	<b>35</b>	<b>2</b>	<b>7</b>	<b>0</b>	<b>42</b>	<b>2</b>

## Overview of accidents involving passenger cars

Table: Accidents involving passenger cars

	2000	2001	2002	2003	2004
Accidents	34.644	35.954	36.006	36.140	35.649
Fatalities	549	570	524	524	480
Injuries	33.594	35.470	35.762	35.722	35.448

### Car driver fatalities by power of vehicle per 1.000 participants

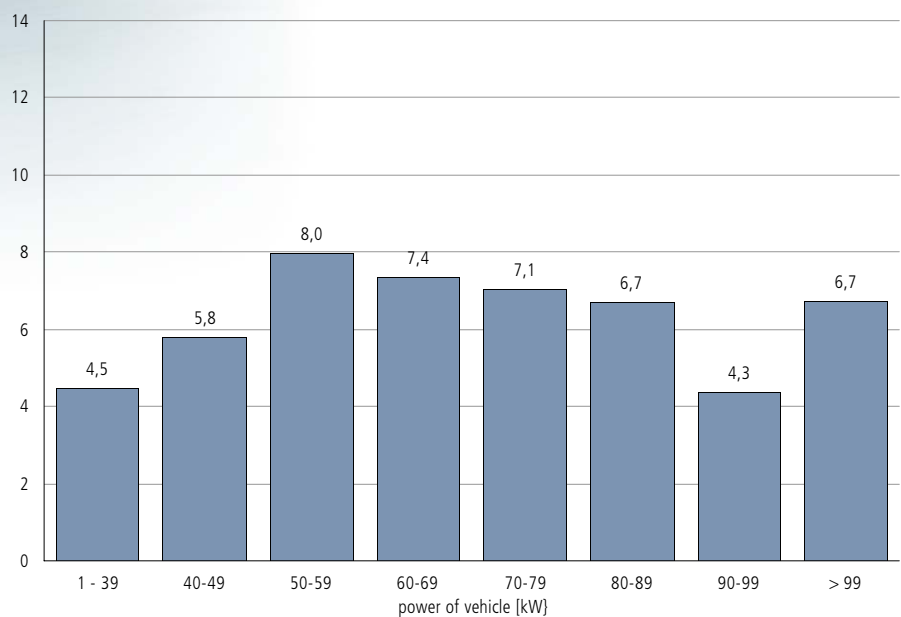
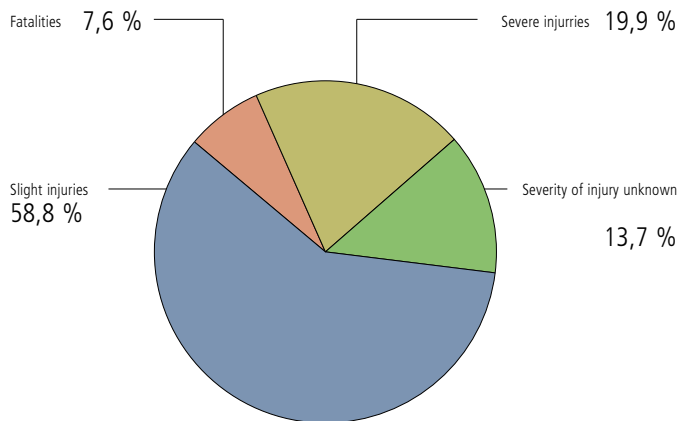


Table: Fatalities and severe injuries of car drivers by power of vehicle

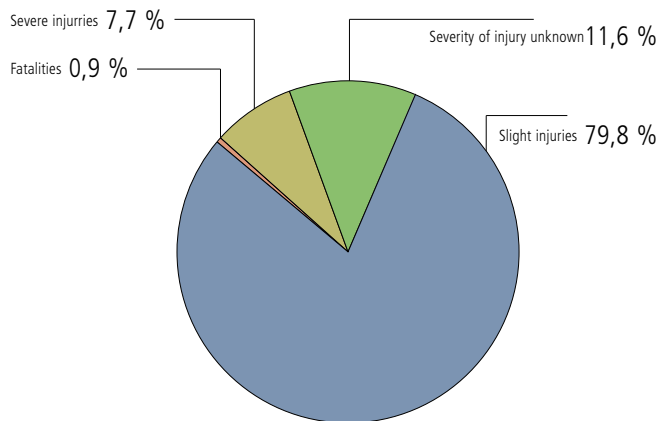
Power of vehicle [kW]	Passenger car drivers			Per 1.000 accidents	
	Participants*	Fatalities	Severe injuries	Fatalities	Severe injuries
1-9	0	0	0	-	-
10-19	18	0	3	0,0	166,7
20-29	87	0	1	0,0	11,5
30-39	2.122	10	99	4,7	46,7
40-49	7.444	43	269	5,8	36,1
50-59	11.547	92	533	8,0	46,2
60-69	11.696	86	512	7,4	43,8
70-79	4.962	35	186	7,1	37,5
80-89	6.413	43	234	6,7	36,5
90-99	2.069	9	70	4,3	33,8
> 99	4.744	32	167	6,7	35,2
Unknown	3.594	18	90	5,0	25,0
<b>Total</b>	<b>54.696</b>	<b>368</b>	<b>2.164</b>	<b>6,7</b>	<b>39,6</b>

\*) Fatalities, injuries und uninjured

### Car driver fatalities and injuries - not using a seat belt



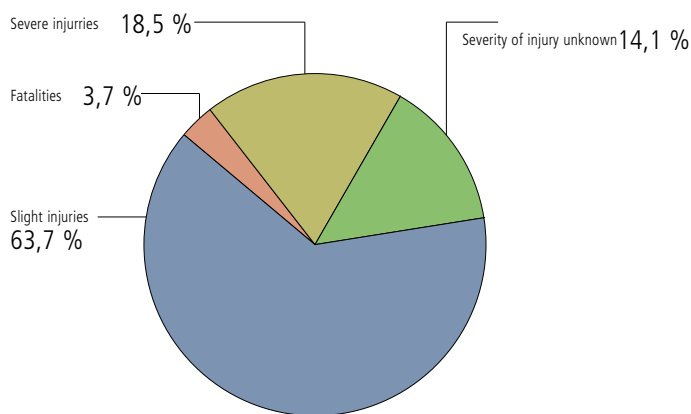
### Car driver fatalities and injuries - using a seat belt



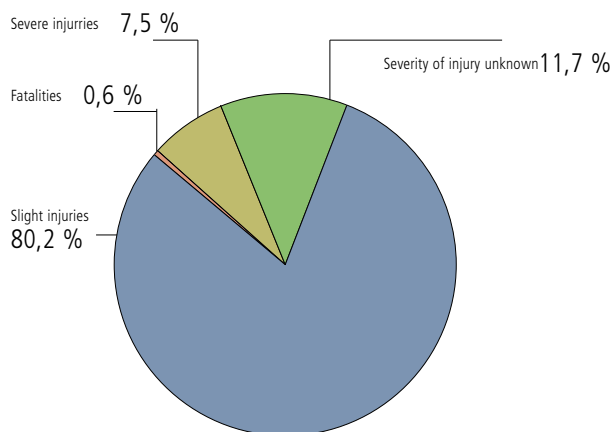
**Table:** Car passenger fatalities and injuries with and without safety belt by severity of injury

	Car driver fatalities and injuries					Car passenger fatalities and injuries				
	Total	without safety belt		with safety belt		Total	without safety belt		with safety belt	
		abs.	%	abs.	%		abs.	%	abs.	%
Fatalities	368	162	7,6	206	0,9	112	59	3,7	53	0,6
Severe injuries	2.164	426	19,9	1.738	7,6	1.001	291	18,5	710	7,5
Severity of injury unknown	2.935	294	13,7	2.641	11,6	1.333	222	14,1	1.111	11,7
Slight injuries	19.406	1.257	58,8	18.149	79,8	8.609	1.003	63,7	7.606	80,2
<b>Total</b>	<b>24.873</b>	<b>2.139</b>	<b>100,0</b>	<b>22.734</b>	<b>100,0</b>	<b>11.055</b>	<b>1.575</b>	<b>100,0</b>	<b>9.480</b>	<b>100,0</b>

### Car passenger fatalities and injuries - not using a seat belt



### Car passenger fatalities and injuries - using safety belts



### Number of car passenger injuries by age

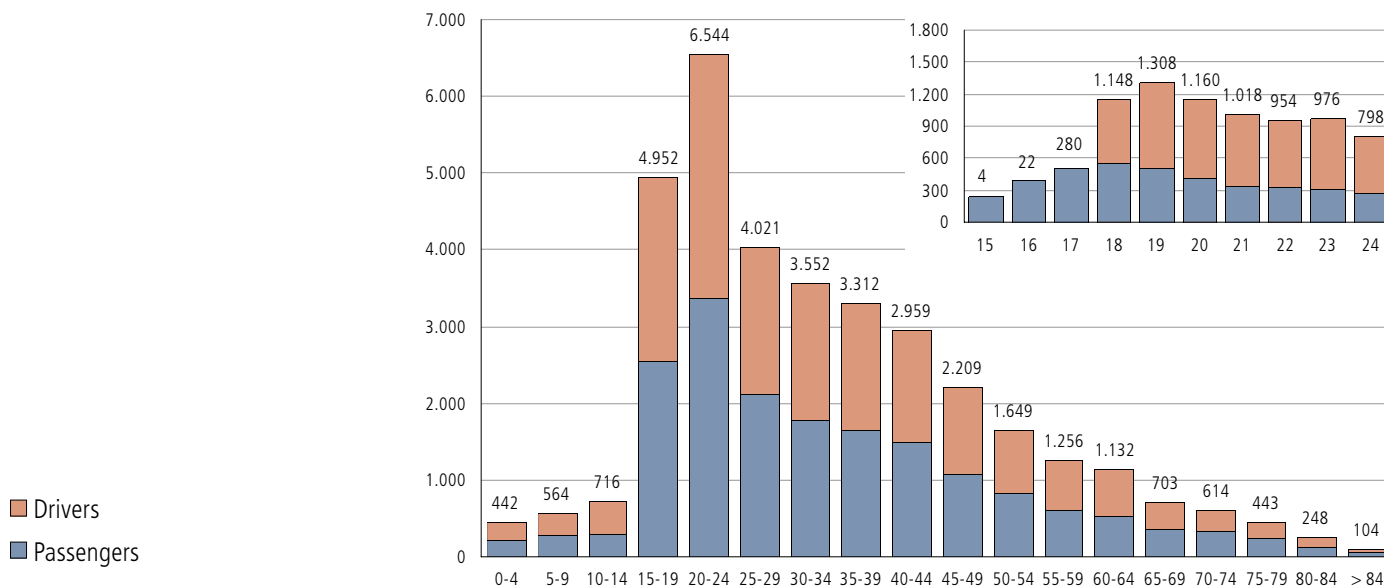


Table: Car passenger injuries by age and sex

Age	Car passenger injuries						Total
	Drivers			Passengers			
	Male	Female	Total	Male	Female	Total	
0-4	0	0	0	220	222	442	442
5-9	0	0	0	280	284	564	564
10-14	3	1	4	285	427	712	716
15-19	1,571	1,191	2,762	966	1,224	2,190	4,952
18	633	515	1,148	245	300	545	1,693
19	753	555	1,308	226	274	500	1,808
20	625	535	1,160	158	243	401	1,561
20-24	2,666	2,240	4,906	688	950	1,638	6,544
25-29	1,730	1,365	3,095	375	551	926	4,021
30-34	1,503	1,286	2,789	276	487	763	3,552
35-39	1,436	1,270	2,706	212	394	606	3,312
40-44	1,308	1,051	2,359	177	423	600	2,959
45-49	945	761	1,706	123	380	503	2,209
50-54	708	525	1,233	114	302	416	1,649
55-59	540	361	901	74	281	355	1,256
60-64	464	304	768	70	294	364	1,132
65-69	303	133	436	53	214	267	703
70-74	285	89	374	50	190	240	614
75-79	205	71	276	31	136	167	443
80-84	104	26	130	23	95	118	248
> 84	39	10	49	14	41	55	104
Unknown	6	5	11	8	9	17	28
<b>Total</b>	<b>13,816</b>	<b>10,689</b>	<b>24,505</b>	<b>4,039</b>	<b>6,904</b>	<b>10,943</b>	<b>35,448</b>

### Number of car passenger fatalities by age

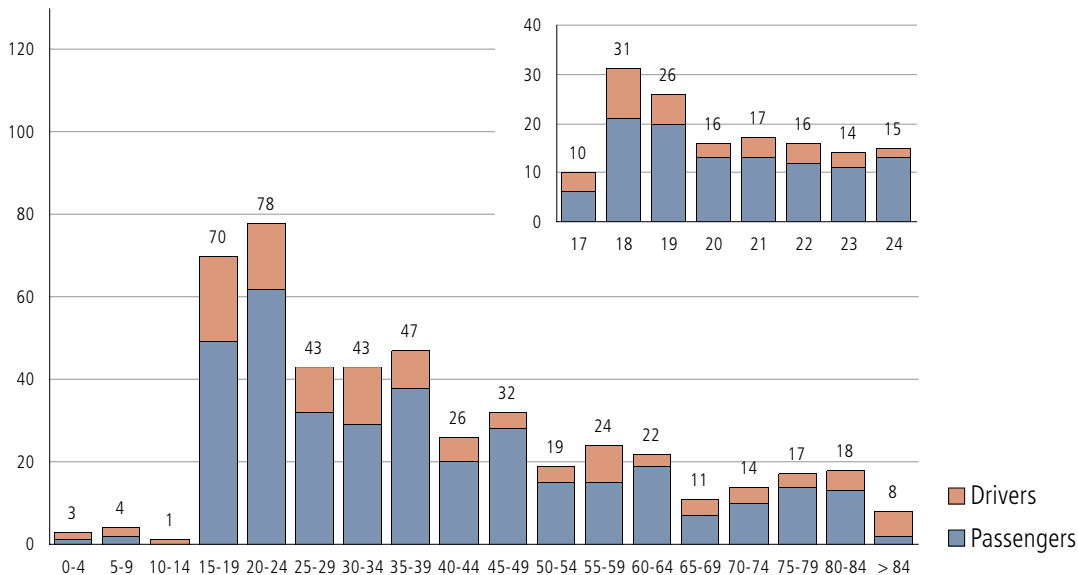


Table: Car passenger fatalities by age and sex

Age	Killed car passengers						Total
	Drivers			Passengers			
	Male	Female	Total	Male	Female	Total	
0-4	0	0	0	1	2	3	3
5-9	0	0	0	2	2	4	4
10-14	0	0	0	0	1	1	1
15-19	33	11	44	16	10	26	70
18	15	4	19	6	6	12	31
19	16	5	21	4	1	5	26
20	12	3	15	1	0	1	16
20-24	51	15	66	11	1	12	78
25-29	30	7	37	2	4	6	43
30-34	27	9	36	2	5	7	43
35-39	36	8	44	2	1	3	47
40-44	15	5	20	5	1	6	26
45-49	25	2	27	3	2	5	32
50-54	11	1	12	4	3	7	19
55-59	13	5	18	2	4	6	24
60-64	14	2	16	5	1	6	22
65-69	7	2	9	0	2	2	11
70-74	9	2	11	1	2	3	14
75-79	12	1	13	2	2	4	17
80-84	11	1	12	2	4	6	18
> 84	2	1	3	0	5	5	8
Unknown	0	0	0	0	0	0	0
<b>Total</b>	<b>296</b>	<b>72</b>	<b>368</b>	<b>60</b>	<b>52</b>	<b>112</b>	<b>480</b>

## Lorries and buses - overview

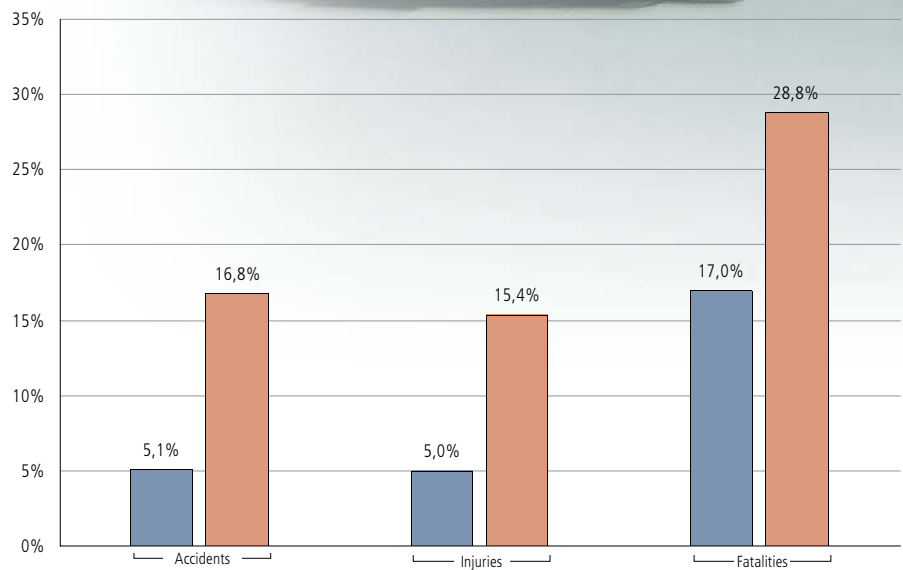
**Table:** Accident frequencies - lorries und buses

	2000		2001		2002		2003		2004	
	Lorries	Buses	Lorries	Buses	Lorries	Buses	Lorries	Busus	Lorries	Buses
Accidents	4.432	707	4.344	785	4.342	767	4.316	737	4.337	789
Fatalities	31	13	39	14	32	5	42	0	43	9
Injuries	1.420	642	1.422	705	1.547	623	1.382	589	1.440	573



## Fraction of accidents with lorries >3,5t on motorways

Total ■  
Motorways ■



**Table:** Accidents involving lorries >3,5t on motorways

	Accidents with personal injury		Accidents involving lorries >3,5t		Fraction of lorries >3,5t per total accidents [%]	
	Total	Motorways	Total	Motorways	Total	Motorways
Accidents	42.657	2.561	2.172	429	5,1	16,8
Injuries	55.857	3.872	2.797	595	5,0	15,4
Fatalities	878	125	149	36	17,0	28,8

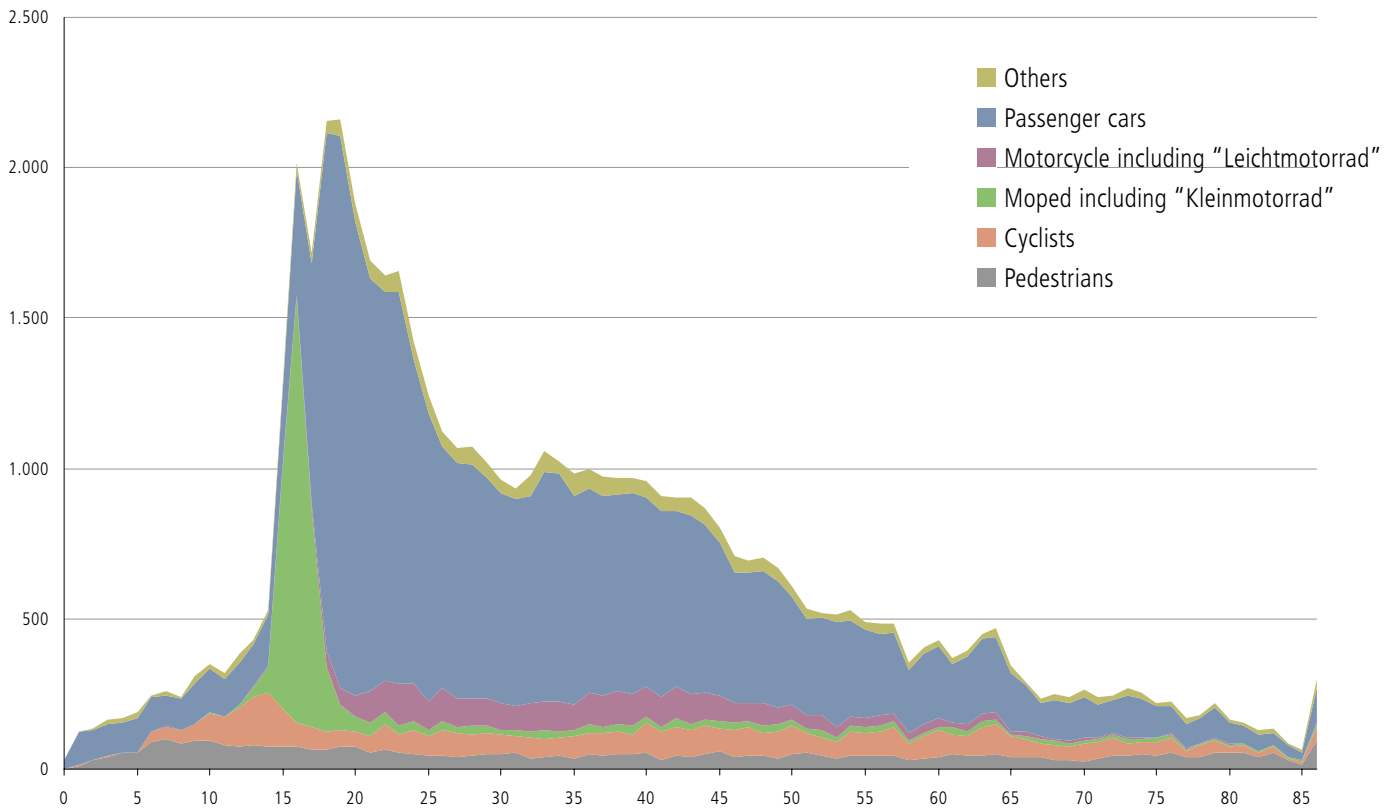
# age groups

## Casualties and fatalities by age and traffic participation

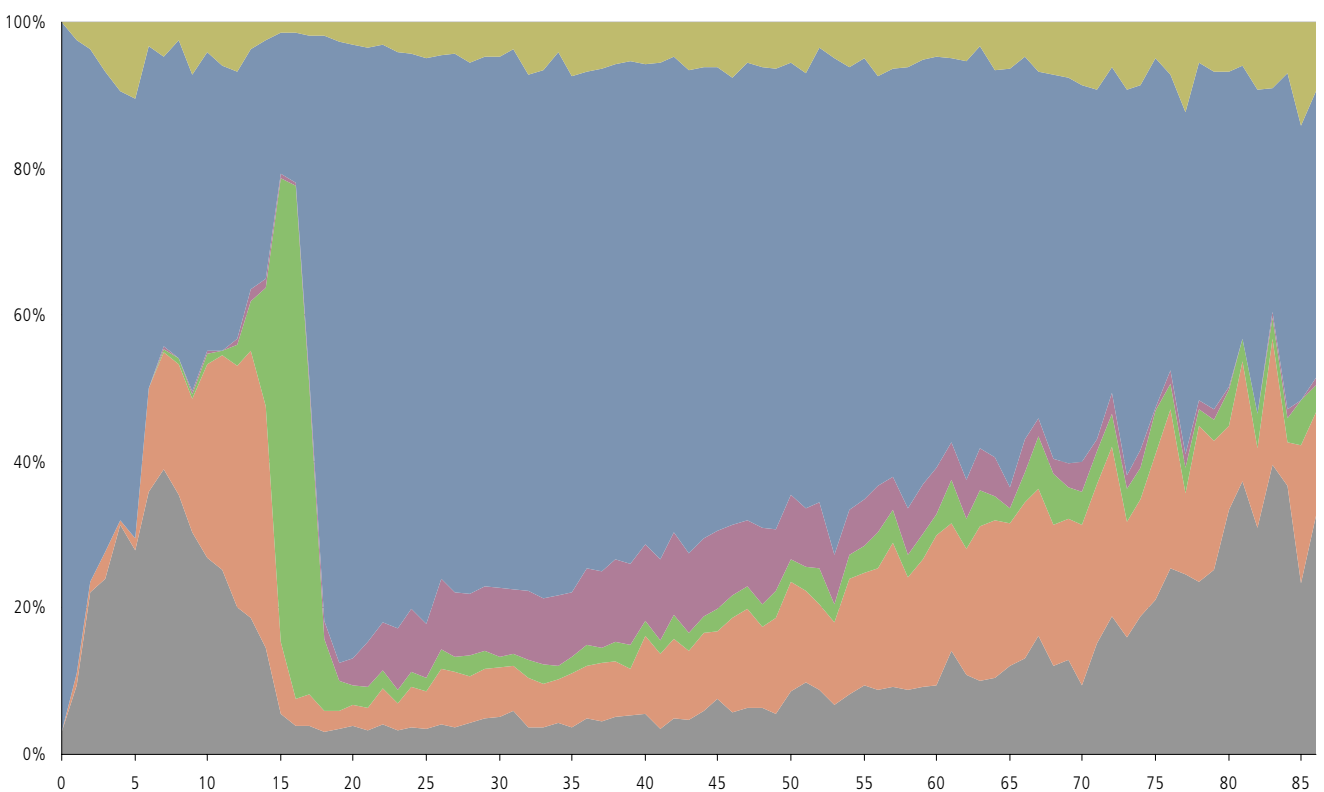
**Table:** Fatalities by age and participation

Age	Pedestrians		Cyclists		Moped		Kleinmot.		Leichtmot.		Motorrad		Passenger cars		Others	Total
	Drivers	Pass.	Drivers	Pass.	Drivers	Pass.	Drivers	Pass.	Drivers	Pass.	Drivers	Pass.	Drivers	Pass.		
0-4	1	-	-	-	-	-	-	-	-	-	-	-	-	3	-	4
5-9	6	-	-	-	-	-	-	-	-	-	-	-	-	4	1	11
10-14	4	2	-	-	-	-	-	-	-	-	-	-	-	1	-	7
15	2	-	-	4	-	-	-	-	-	-	-	-	-	1	1	8
16	1	-	-	9	1	-	-	-	-	-	-	-	-	2	1	14
17	1	-	-	3	1	-	-	-	-	-	-	4	6	-	-	15
18	2	-	-	1	-	-	-	-	-	-	-	19	12	-	-	34
19	-	1	-	-	-	-	-	-	-	-	-	21	5	1	-	28
20	1	-	-	-	-	-	-	-	-	1	-	15	1	-	-	18
21	2	1	-	-	-	-	-	-	-	2	-	15	2	-	-	22
22	2	-	-	-	-	-	-	-	-	4	-	15	1	1	-	23
23	-	-	-	-	-	-	-	-	-	4	1	9	5	1	-	20
24	1	1	-	-	-	-	-	-	-	5	-	12	3	2	-	24
25-29	2	-	-	1	-	-	-	-	-	14	-	37	6	8	-	68
30-34	4	2	-	-	-	-	-	-	-	11	-	36	7	5	-	65
35-39	7	2	-	1	-	-	-	-	-	19	-	44	3	13	-	89
40-44	12	3	-	1	-	-	-	-	-	6	4	20	6	6	-	58
45-49	4	2	-	2	-	-	-	-	-	6	-	27	5	6	-	52
50-54	2	2	-	1	-	-	-	-	-	10	-	12	7	3	-	37
55-59	9	5	-	5	-	-	-	-	-	4	-	18	6	4	-	51
60-64	9	8	-	3	-	-	-	-	-	4	-	16	6	5	-	51
65-69	5	9	-	5	-	-	-	-	-	1	-	9	2	1	-	32
70-74	13	5	-	2	-	-	-	-	-	1	-	11	3	2	-	37
> 74	42	15	-	4	-	-	-	-	-	1	-	28	15	5	-	110
<b>Total</b>	<b>132</b>	<b>58</b>	<b>-</b>	<b>42</b>	<b>2</b>	<b>-</b>	<b>-</b>	<b>-</b>	<b>-</b>	<b>93</b>	<b>5</b>	<b>368</b>	<b>112</b>	<b>66</b>	<b>-</b>	<b>878</b>

Number of casualties by age and participation (absolute)



Number of casualties by age and participation (relative)

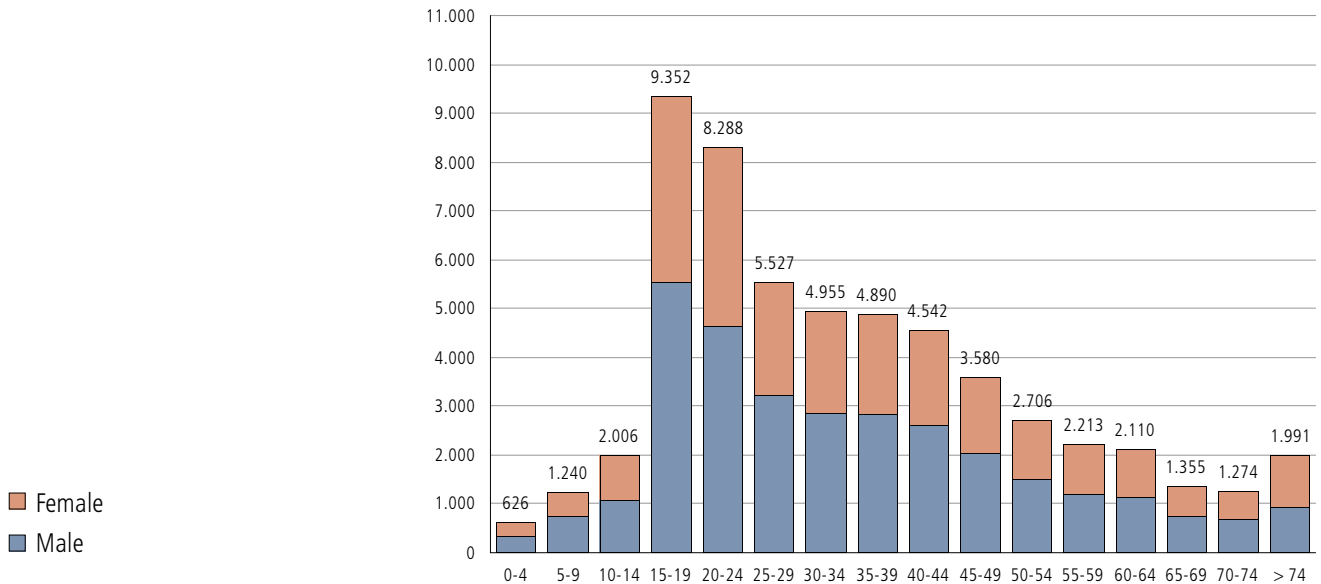


AGE GROUPS

**Table: Casualties by age and participation**

Age	Pedestrians		Cyclists		Moped		Kleinmot.		Leichtmot.		Motorrad		Passenger cars		Others	Total
	Drivers	Pass.	Drivers	Pass.	Drivers	Pass.	Drivers	Pass.	Drivers	Pass.	Drivers	Pass.	Drivers	Pass.		
0-4	135	-	11	-	-	-	-	-	-	-	-	-	-	445	35	626
5-9	419	169	9	-	5	-	-	-	-	-	2	-	-	568	68	1.240
10-14	407	637	7	23	108	-	1	-	1	1	16	4	713	88	2.006	
15	73	125	3	672	147	3	1	1	-	-	7	4	247	20	1.303	
16	77	76	-	1.265	141	9	-	-	1	-	6	22	392	29	2.018	
17	66	73	-	644	73	8	1	3	-	6	9	284	515	33	1.715	
18	65	62	-	190	20	1	1	10	-	37	7	1.167	557	38	2.155	
19	77	53	-	71	14	-	-	6	-	38	12	1.329	505	56	2.161	
20	73	54	-	44	6	-	-	2	-	52	14	1.175	402	57	1.879	
21	57	51	-	44	5	-	-	1	-	91	12	1.033	340	58	1.692	
22	67	81	-	34	4	2	-	2	1	97	8	969	323	52	1.640	
23	54	62	-	29	-	-	-	5	-	127	9	985	316	68	1.655	
24	52	79	-	25	3	-	-	3	-	108	12	810	269	61	1.422	
25-29	226	365	-	121	8	3	-	8	-	432	34	3.132	932	266	5.527	
30-34	223	312	-	98	3	2	-	8	1	428	23	2.825	770	262	4.955	
35-39	232	353	1	119	7	3	-	18	-	445	45	2.750	609	308	4.890	
40-44	223	471	-	103	3	3	-	14	-	428	50	2.379	606	262	4.542	
45-49	228	424	-	107	6	1	-	7	-	305	33	1.733	508	228	3.580	
50-54	229	360	-	91	1	-	-	5	-	184	21	1.245	423	147	2.706	
55-59	202	375	-	85	3	1	-	3	1	115	14	919	361	134	2.213	
60-64	229	417	-	84	2	1	1	5	-	108	4	784	370	105	2.110	
65-69	178	270	-	61	2	-	-	3	-	39	-	445	269	88	1.355	
70-74	198	251	-	56	-	1	-	6	-	25	2	385	243	107	1.274	
> 74	592	311	-	72	1	-	-	2	1	12	2	483	355	160	1.991	
Unknown	20	18	-	3	2	-	-	-	-	1	1	11	17	7	80	
<b>Total</b>	<b>4.402</b>	<b>5.449</b>	<b>31</b>	<b>4.041</b>	<b>564</b>	<b>38</b>	<b>5</b>	<b>112</b>	<b>6</b>	<b>3.079</b>	<b>343</b>	<b>24.873</b>	<b>11.055</b>	<b>2.737</b>	<b>56.735</b>	

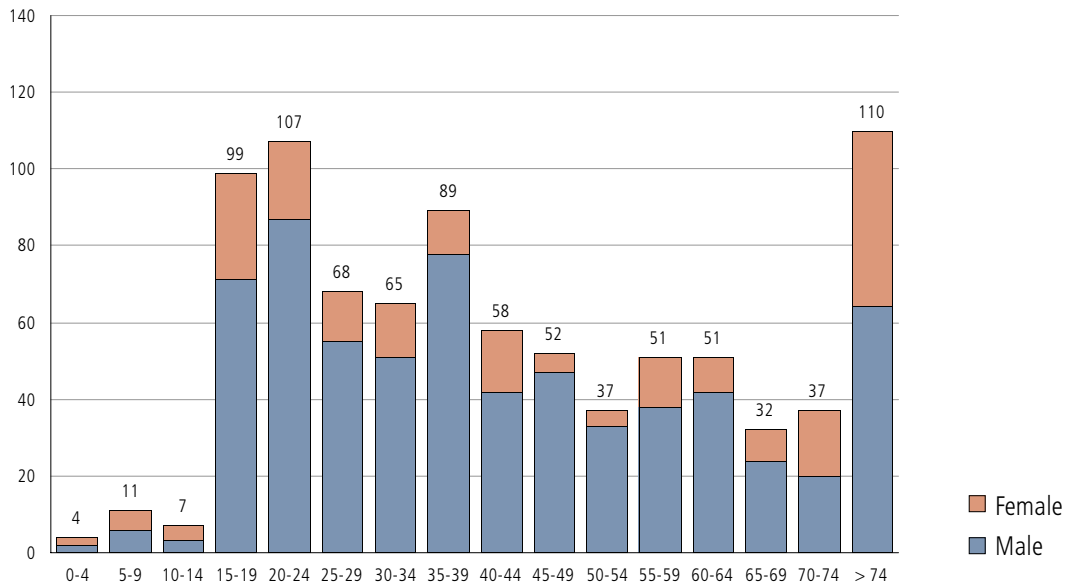
### Number of injuries and fatalities by age and sex



**Table:** Number of casualties by age and sex

Age	Male		Female		Total	
	Injuries	Casualties	Injuries	Casualties	Injuries	Casualties
0-4	330	332	292	294	622	626
5-9	717	723	512	517	1.229	1.240
10-14	1.076	1.079	923	927	1.999	2.006
15-19	5.467	5.538	3.786	3.814	9.253	9.352
20-24	4.554	4.641	3.627	3.647	8.181	8.288
25-29	3.171	3.226	2.288	2.301	5.459	5.527
30-34	2.809	2.860	2.081	2.095	4.890	4.955
35-39	2.757	2.835	2.044	2.055	4.801	4.890
40-44	2.579	2.621	1.905	1.921	4.484	4.542
45-49	1.983	2.030	1.545	1.550	3.528	3.580
50-54	1.479	1.512	1.190	1.194	2.669	2.706
55-59	1.158	1.196	1.004	1.017	2.162	2.213
60-64	1.099	1.141	960	969	2.059	2.110
65-69	702	726	621	629	1.323	1.355
70-74	645	665	592	609	1.237	1.274
> 74	853	917	1.028	1.074	1.881	1.991
Unknown	40	40	39	39	79	79
<b>Total</b>	<b>31.419</b>	<b>32.082</b>	<b>24.437</b>	<b>24.652</b>	<b>55.857</b>	<b>56.735</b>

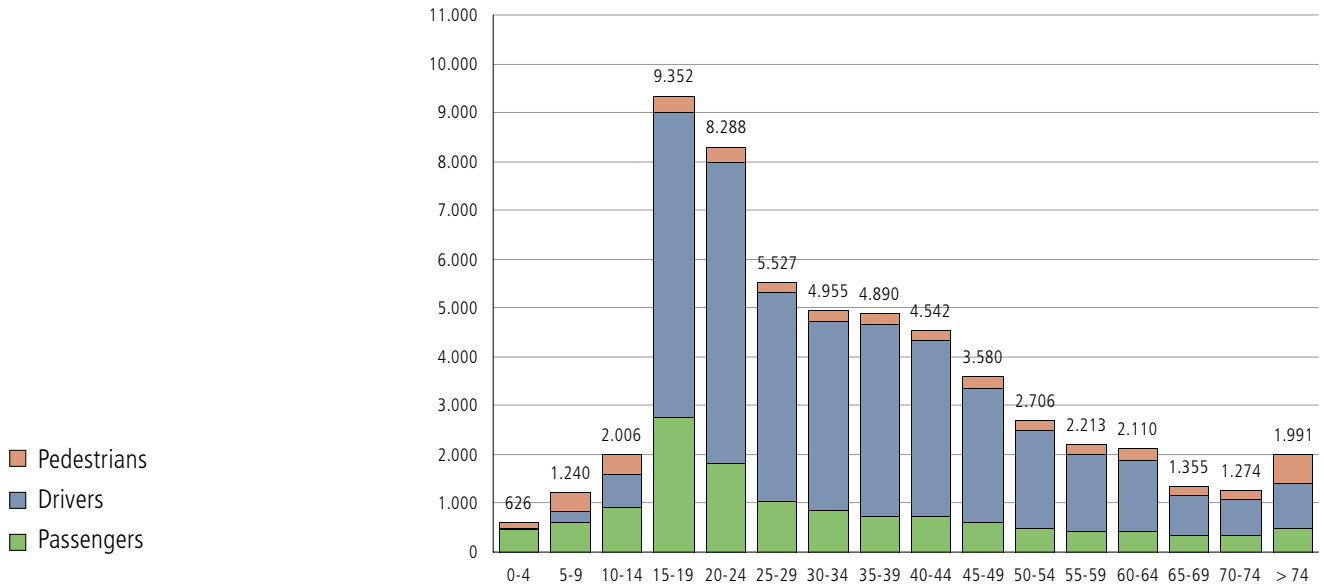
### Number of fatalities by age and sex



**Table:** Number of fatalities by age and sex

Age	Male	Female	Total
0-4	2	2	4
5-9	6	5	11
10-14	3	4	7
15-19	71	28	99
20-24	87	20	107
25-29	55	13	68
30-34	51	14	65
35-39	78	11	89
40-44	42	16	58
45-49	47	5	52
50-54	33	4	37
55-59	38	13	51
60-64	42	9	51
65-69	24	8	32
70-74	20	17	37
> 74	64	46	110
Unknown	0	0	0
<b>Total</b>	<b>663</b>	<b>215</b>	<b>878</b>

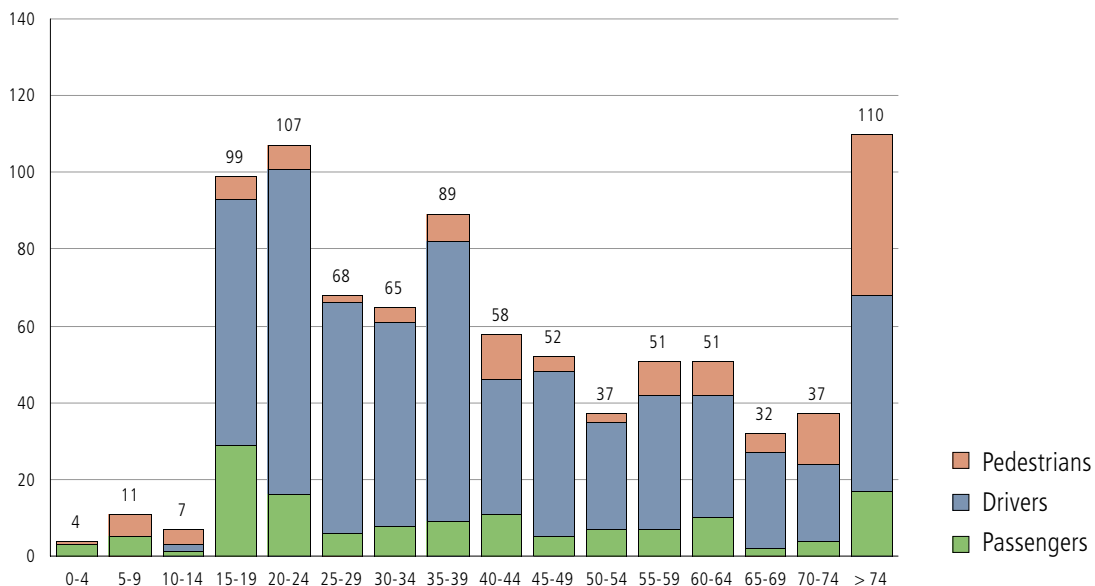
### Number of casualties by age and traffic participation



**Table:** Number of casualties by age and traffic participation

Age	Pedestrians		Drivers		Passengers		Total	
	Injuries	Casualties	Injuries	Casualties.	Injuries	Casualties	Injuries	Casualties
0-4	134	135	17	17	471	474	622	626
5-9	413	419	200	200	616	621	1.229	1.240
10-14	403	407	688	690	908	909	1.999	2.006
15-19	352	358	6.154	6.218	2.747	2.776	9.253	9.352
20-24	297	303	6.072	6.157	1.812	1.828	8.181	8.288
25-29	224	226	4.187	4.247	1.048	1.054	5.459	5.527
30-34	219	223	3.810	3.863	861	869	4.890	4.955
35-39	225	232	3.836	3.909	740	749	4.801	4.890
40-44	211	223	3.546	3.581	727	738	4.484	4.542
45-49	224	228	2.696	2.739	608	613	3.528	3.580
50-54	227	229	1.946	1.974	496	503	2.669	2.706
55-59	193	202	1.535	1.570	434	441	2.162	2.213
60-64	220	229	1.405	1.437	434	444	2.059	2.110
65-69	173	178	828	853	322	324	1.323	1.355
70-74	185	198	731	751	321	325	1.237	1.274
> 74	550	592	854	905	477	494	1.881	1.991
Unknown	20	20	35	35	25	25	80	80
<b>Total</b>	<b>4.270</b>	<b>4.402</b>	<b>38.540</b>	<b>39.146</b>	<b>13.047</b>	<b>13.187</b>	<b>55.857</b>	<b>56.735</b>

### Number of fatalities by age and participation



**Table:** Number of fatalities by age and participation

Age	Pedestrians	Drivers	Passengers	Total
0-4	1	0	3	4
5-9	6	0	5	11
10-14	4	2	1	7
15-19	6	64	29	99
20-24	6	85	16	107
25-29	2	60	6	68
30-34	4	53	8	65
35-39	7	73	9	89
40-44	12	35	11	58
45-49	4	43	5	52
50-54	2	28	7	37
55-59	9	35	7	51
60-64	9	32	10	51
65-69	5	25	2	32
70-74	13	20	4	37
> 74	42	51	17	110
Unknown	0	0	0	0
<b>Total</b>	<b>132</b>	<b>606</b>	<b>140</b>	<b>878</b>

## Children fatalities and injuries by age and participation

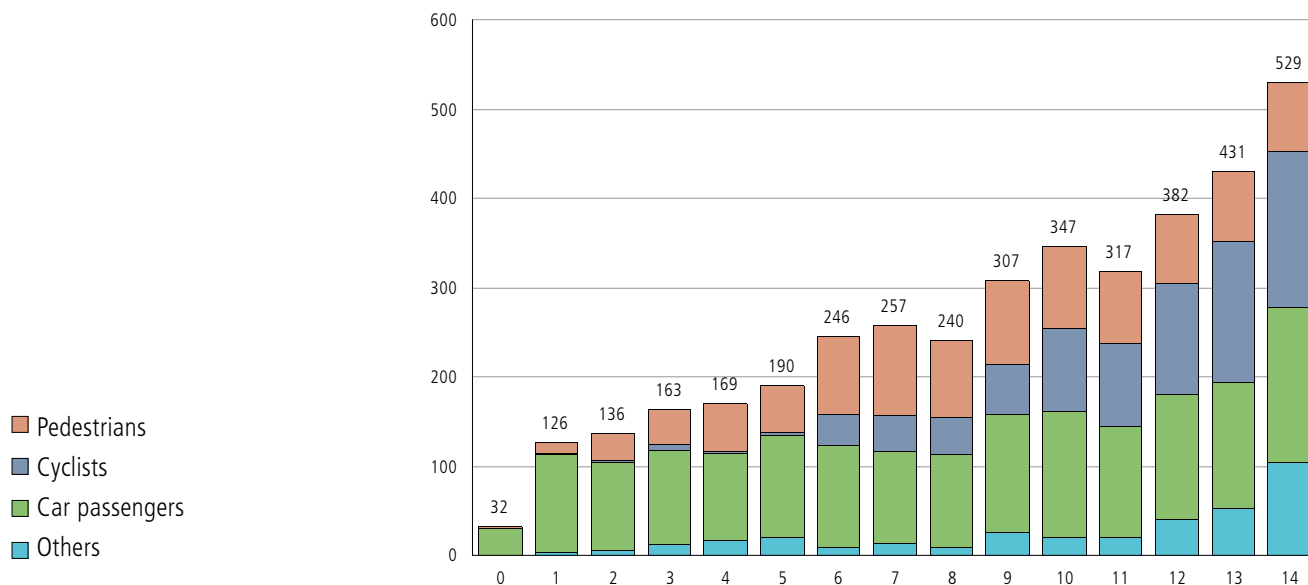


Table: Children fatalities and injuries by age und participation

Age	Pedestrians	Cyclists	Car Passengers	Others	Total
0	1	0	31	0	32
1	12	2	109	3	126
2	30	2	99	5	136
3	39	6	107	11	163
4	53	1	99	16	169
5	53	3	114	20	190
6	88	35	115	8	246
7	100	41	102	14	257
8	85	43	104	8	240
9	93	56	133	25	307
10	93	92	142	20	347
11	80	93	123	21	317
12	77	126	139	40	382
13	80	158	141	52	431
14	77	175	172	105	529
Total	961	833	1.730	348	3.872

\*) Children: 0–14 years

### Children\* fatalities and injuries by age - on their way to school

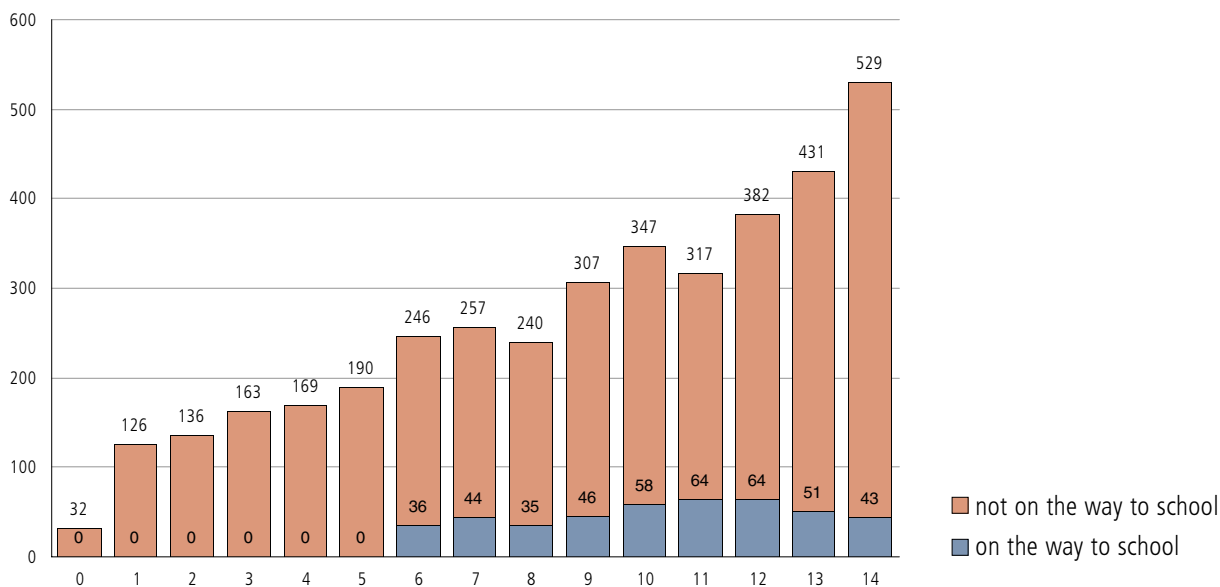


Table: Children\* fatalities and injuries by federal state

	Accidents with Children	Injured Children	Children Fatalities	ratio total accidents		
				Accidents [%]	Injuries [%]	Fatalities [%]
BGLD	60	68	0	6,7	5,8	0,0
KTN	278	304	1	9,1	7,6	1,5
NÖ	556	603	6	7,4	6,1	2,2
OÖ	769	865	5	8,4	7,0	3,3
SBG	241	254	5	7,9	6,4	6,2
STMK	495	550	2	6,8	5,8	1,4
TIROL	378	404	1	8,7	7,0	1,6
VBG	239	240	1	13,0	10,5	3,2
WIEN	527	562	1	9,5	8,0	2,3
<b>AUSTRIA</b>	<b>3.543</b>	<b>3.850</b>	<b>22</b>	<b>8,3</b>	<b>6,9</b>	<b>2,5</b>

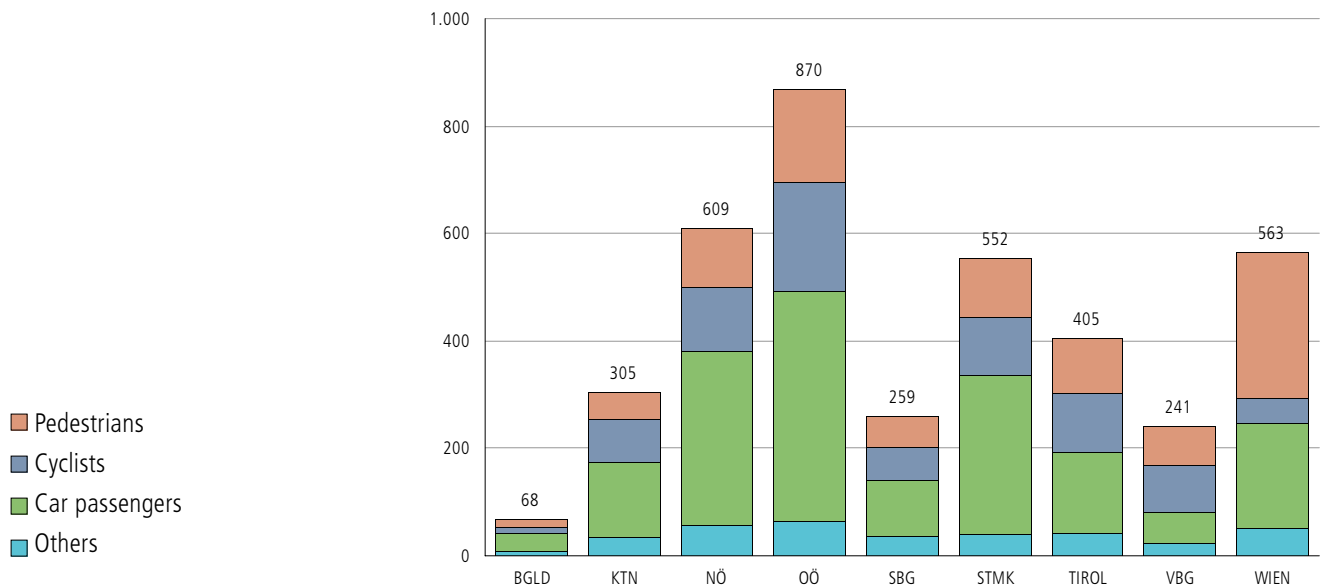
Table: Accidents on the way to school\*\* by federal state

	Accidents	Injured pupils	Killed pupils
BGLD	11	14	0
KTN	30	30	0
NÖ	64	71	0
OÖ	88	92	1
SBG	24	23	1
STMK	66	66	1
TIROL	45	46	0
VBG	53	51	1
WIEN	73	72	1
<b>AUSTRIA</b>	<b>454</b>	<b>465</b>	<b>5</b>

\*) Children: 0–14 years

\*\*) Pupils: 6–15 years

### Children\* fatalities and injuries per participation

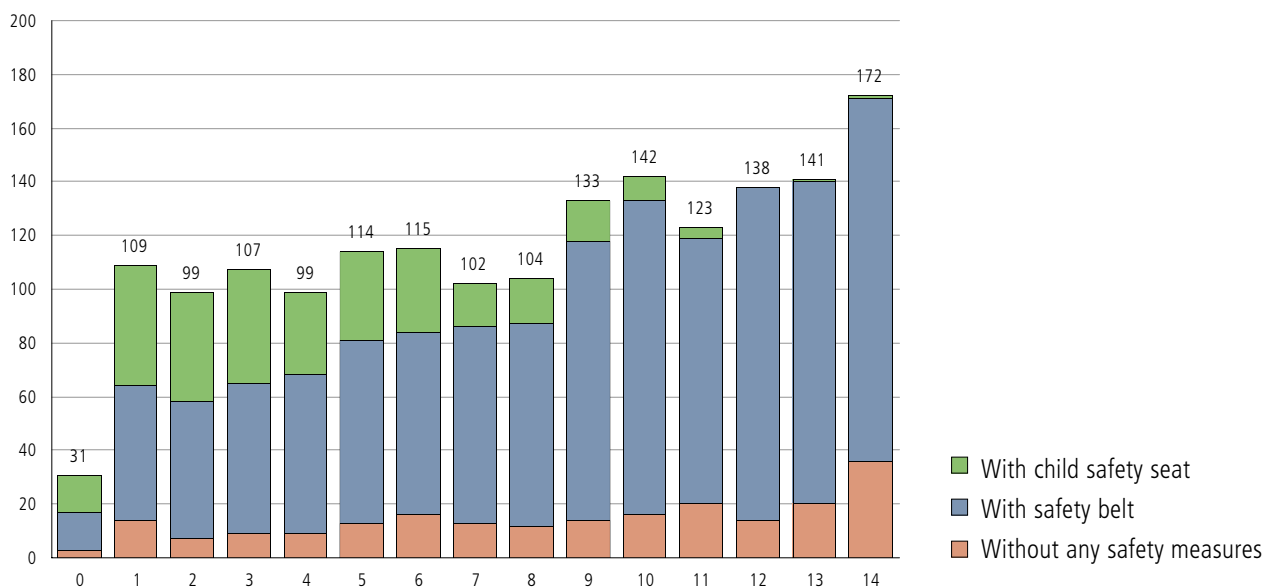


**Table:** Children fatalities and injuries\* by federal state and participation in traffic

	Accidents involving children as ...				Injured children as ...				Children fatalities as ...			
	Pedestrians	Cyclists	Car Passengers	Others	Pedestrians	Cyclists	Car Passengers	Others	Pedestrians	Cyclists	Car Passengers	Others
BGLD	14	14	26	7	14	13	33	8	0	0	0	0
KTN	49	88	111	33	49	81	140	34	1	0	0	0
NÖ	109	128	267	53	109	117	321	56	1	1	4	0
OÖ	173	210	324	63	173	202	425	65	2	1	2	0
SBG	63	67	87	27	55	61	102	36	4	0	1	0
STMK	111	118	231	38	108	110	293	39	0	0	1	1
TIROL	107	119	116	38	102	110	151	41	1	0	0	0
VBG	73	103	44	23	72	88	57	23	1	0	0	0
WIEN	266	53	164	46	268	49	196	49	1	0	0	0
<b>AUSTRIA</b>	<b>965</b>	<b>900</b>	<b>1.370</b>	<b>328</b>	<b>950</b>	<b>831</b>	<b>1.718</b>	<b>351</b>	<b>11</b>	<b>2</b>	<b>8</b>	<b>1</b>

\*) Children: 0–14 years

### Children\* fatalities and injuries in passenger cars by age

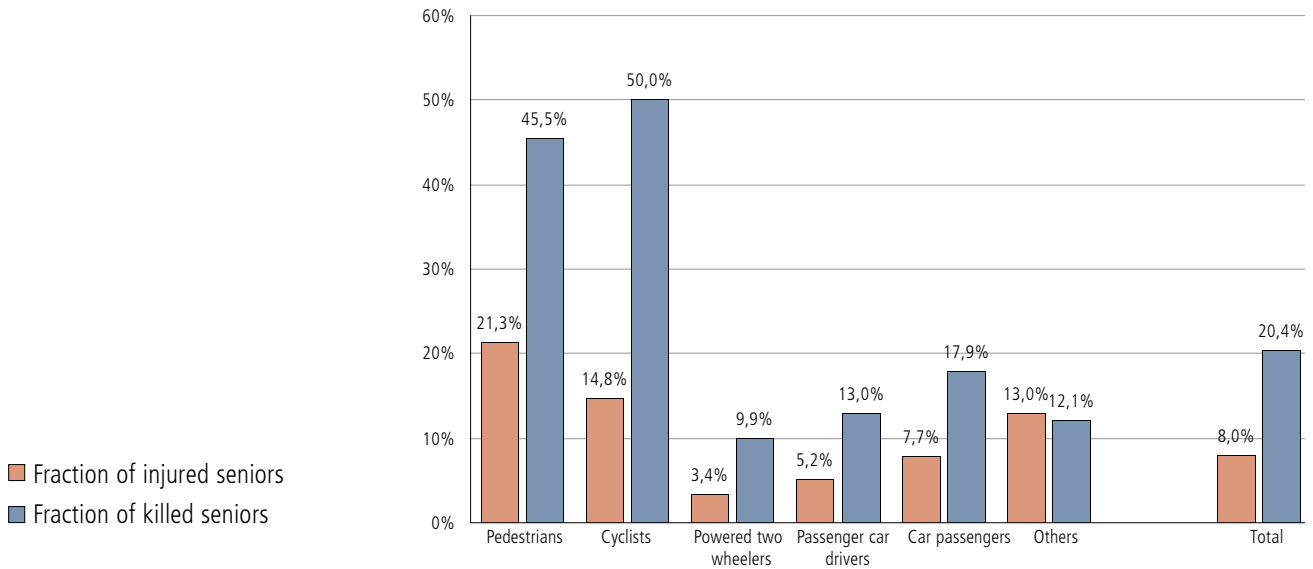


**Table: Children\* fatalities and injuries in passenger cars by age**

Age	0	1	2	3	4	5	6	7	8	9	10	11	12	13	14	Total
In child safety seat	14	45	41	42	31	33	31	16	17	15	9	4	0	1	1	300
With seat belts	14	50	51	56	59	68	68	73	75	104	117	99	124	120	135	1.213
Without safety measures	3	14	7	9	9	13	16	13	12	14	16	20	14	20	36	216
<b>Total</b>	<b>31</b>	<b>109</b>	<b>99</b>	<b>107</b>	<b>99</b>	<b>114</b>	<b>115</b>	<b>102</b>	<b>104</b>	<b>133</b>	<b>142</b>	<b>123</b>	<b>138</b>	<b>141</b>	<b>172</b>	<b>1.729</b>

\*) Children: 0–14 year

### Senior\* fatalities and injuries by participation

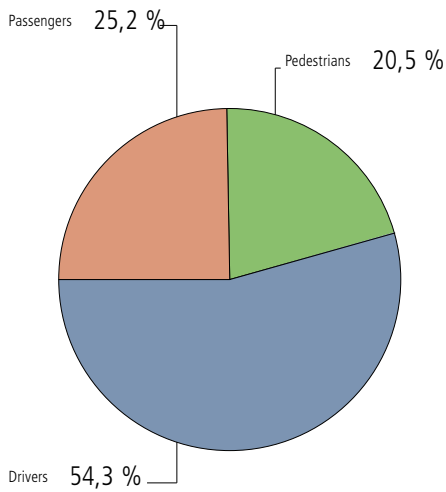


**Table:** Senior\* fatalities and injuries by participation

	Injuries total	Injured seniors	Fraction of seniors [%]	Fatalities total	Fatalities seniors	Fraction of seniors [%]
Pedestrians	4.270	908	21,3	132	60	45,5
Cyclists	5.422	803	14,8	58	29	50,0
Powered two-wheelers	8.046	271	3,4	142	14	9,9
Passenger car drivers	24.504	1.265	5,2	368	48	13,0
Passengers	10.942	847	7,7	112	20	17,9
Others	2.673	347	13,0	66	8	12,1
<b>Total</b>	<b>55.857</b>	<b>4.441</b>	<b>8,0</b>	<b>878</b>	<b>179</b>	<b>20,4</b>

\*) Seniors: 65 years and older

Number of injured seniors\*



Number of senior\* fatalities

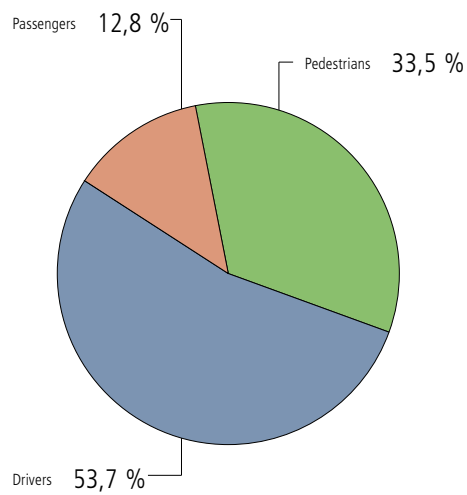


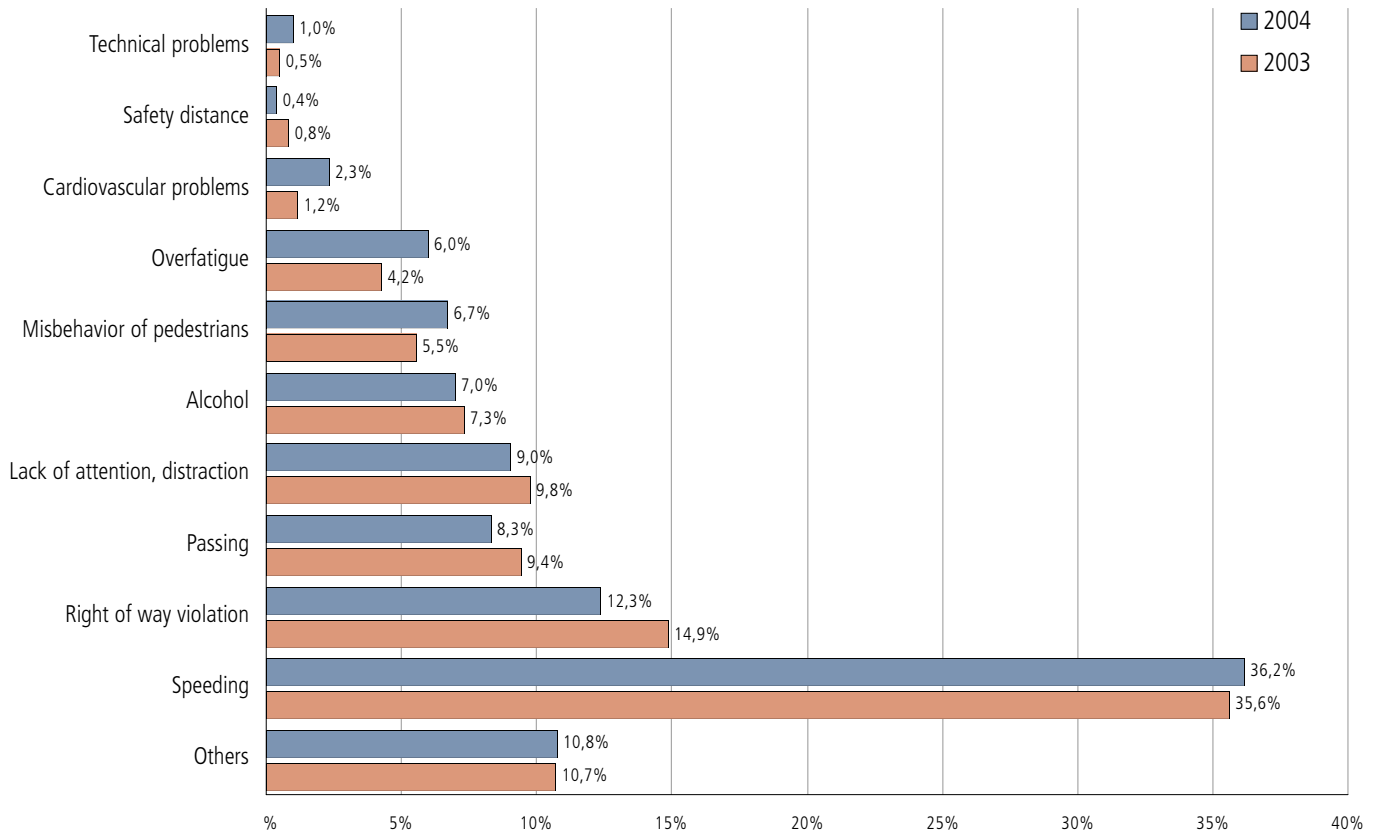
Table: Senior\* fatalities by age

	Injured seniors			Senior fatalities		
	Male	Female	Total	Male	Female	Total
Pedestrians	292	616	908	23	37	60
Drivers	1.683	730	2.413	80	16	96
Passengers	225	895	1.120	5	18	23
Total	2.200	2.241	4.441	108	71	179

\*) Seniors: 65 years and older

# accident types & causes

Fraction of assumed accident causes per total road accidents with lethal consequences



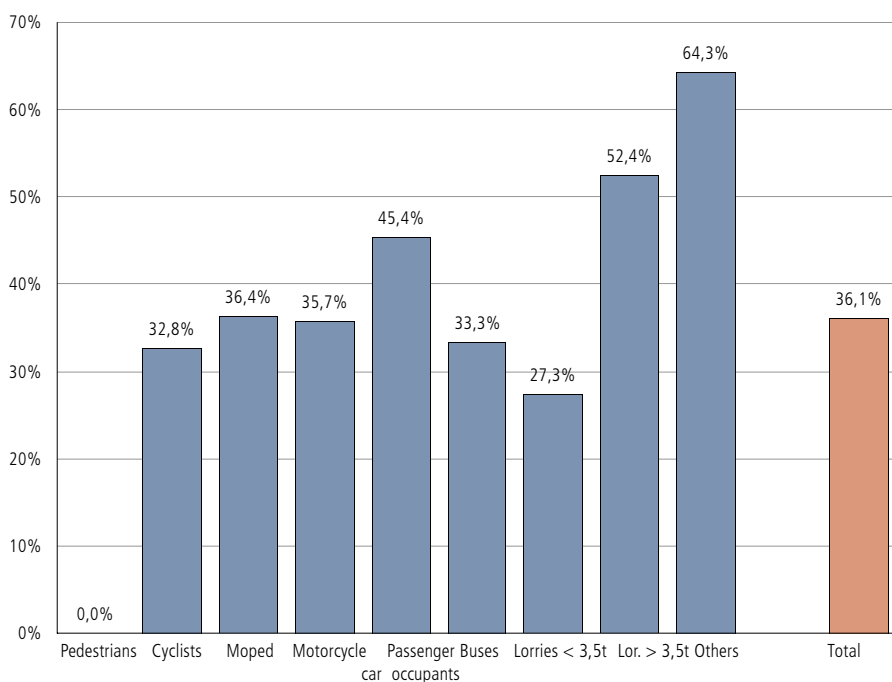
**Table:** Assumed accident causes for road accidents with lethal consequences (BMI)\*

Assumed cause	Accident rate 2002	Accident rate 2003
Speeding	302	296
Right of way violation	126	101
Lack of attention, distraction	80	68
Passing	83	74
Alcohol	62	57
Misbehavior of pedestrians	47	55
Overfatigue	36	49
Cardiovascular problems	10	19
Safety distance	7	3
Technical problems	4	8
Others	91	88
<b>Total</b>	<b>848</b>	<b>818</b>

Quelle: Bundesministerium für Inneres, Abteilung II/2/d

\*) Have a look to: <http://www.bmi.gv.at/verkehrsangelegenheiten/>

### Fraction of fatalities in single vehicle accidents per total number of fatalities



**Table:** Total fatalities and fatalities in single vehicle accidents

	Fatalities			Single vehicle accidents		
	Inside urban area	Outside urban area	Total	Inside urban area	Outside urban area	Total
Pedestrians	92	40	132	0	0	0
Bicycle	29	29	58	9	10	19
Moped	19	25	44	8	8	16
Motorcycle	16	82	98	8	27	35
Passenger cars	68	412	480	27	191	218
Buses	1	8	9	1	2	3
Lorries < 3,5t	2	20	22	0	6	6
Lorries > 3,5t	1	20	21	0	11	11
Others	3	11	14	1	8	9
<b>Total</b>	<b>231</b>	<b>647</b>	<b>878</b>	<b>54</b>	<b>263</b>	<b>317</b>

# special issues

Traffic participants under the influence of alcohol by age and sex

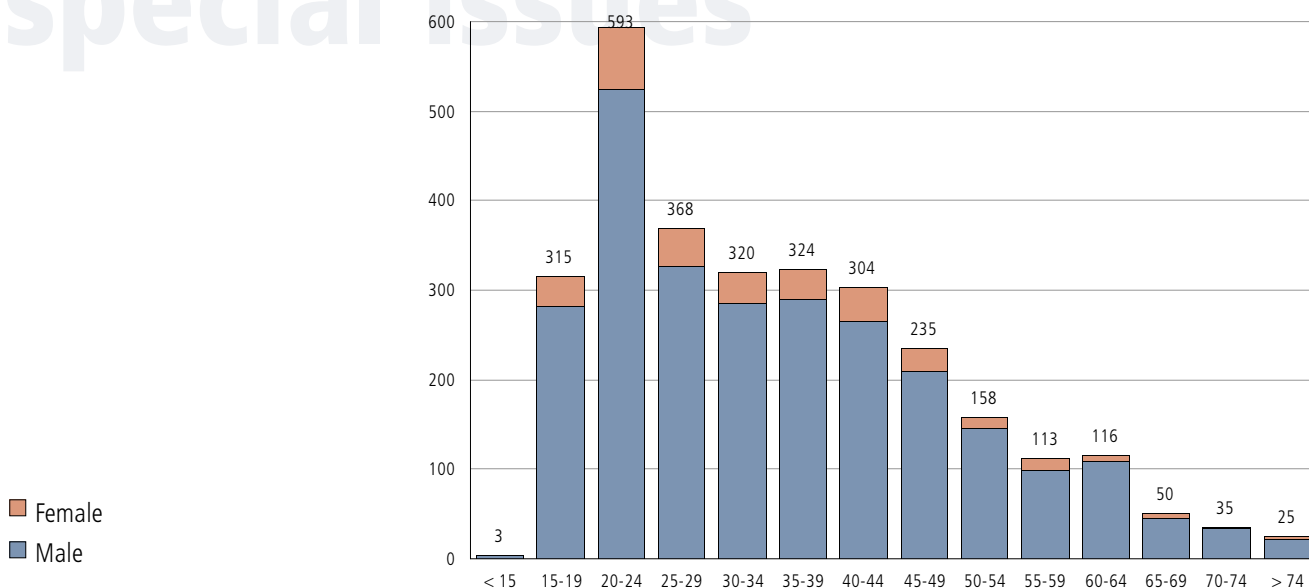
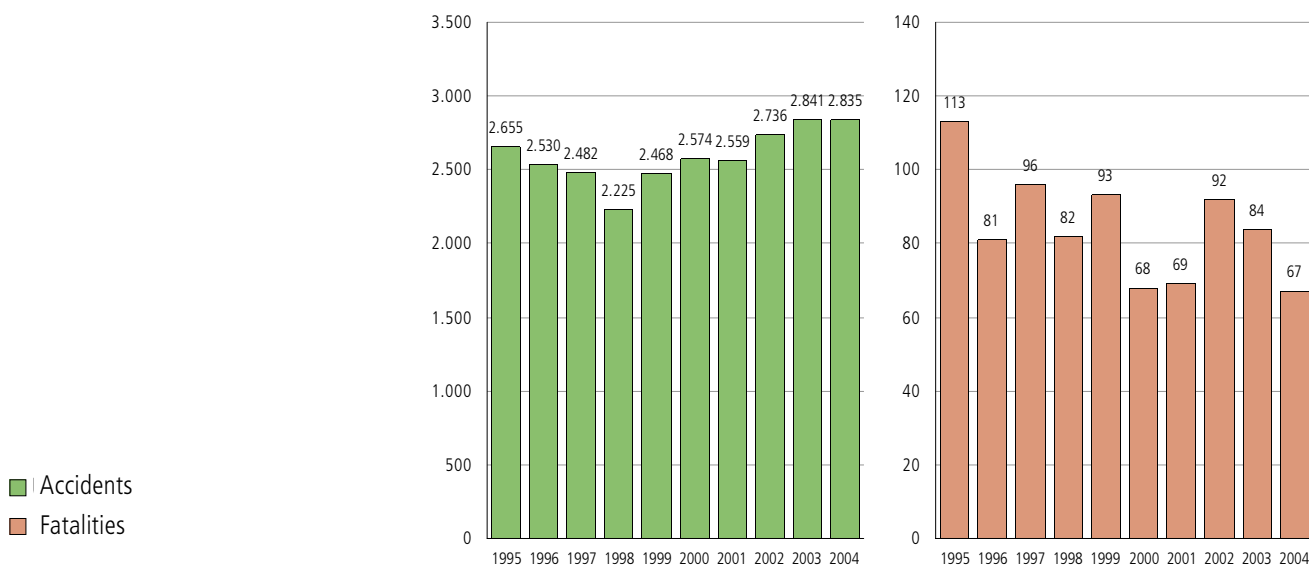


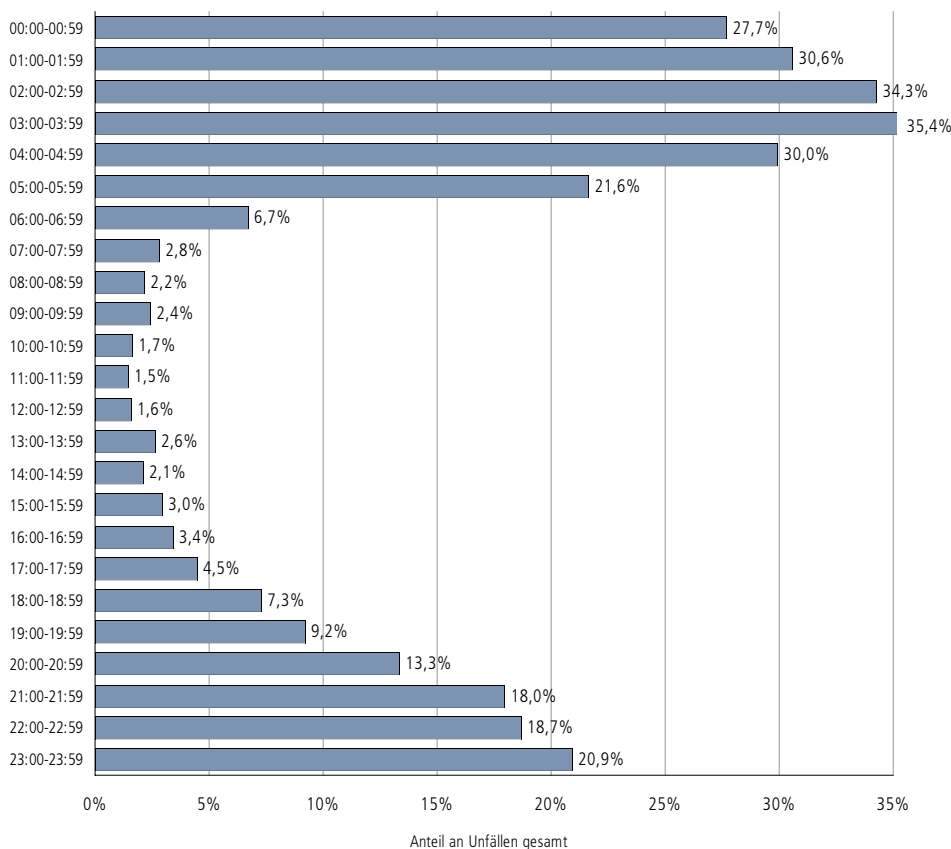
Table: Participants under the influence of alcohol by age and sex

	<15	15-19	20-24	25-29	30-34	35-39	40-44	45-49	50-54	55-59	60-64	65-69	70-74	>74	Unbek.	Summe
Male	3	282	524	327	285	290	264	209	145	99	109	46	33	22	0	2.638
Female	0	33	69	41	35	34	40	26	13	14	7	4	2	3	0	321
Total	3	315	593	368	320	324	304	235	158	113	116	50	35	25	0	2.959
Alcoholised participants [%]	0,1	10,6	20,0	12,4	10,8	10,9	10,3	7,9	5,3	3,8	3,9	1,7	1,2	0,8	0,0	100,0
Male participants [%]	00,0	89,5	88,4	88,9	89,1	89,5	86,8	88,9	91,8	87,6	94,0	92,0	94,3	88,0	-	89,2

Alcohol related accidents and fatalities 1994 - 2004



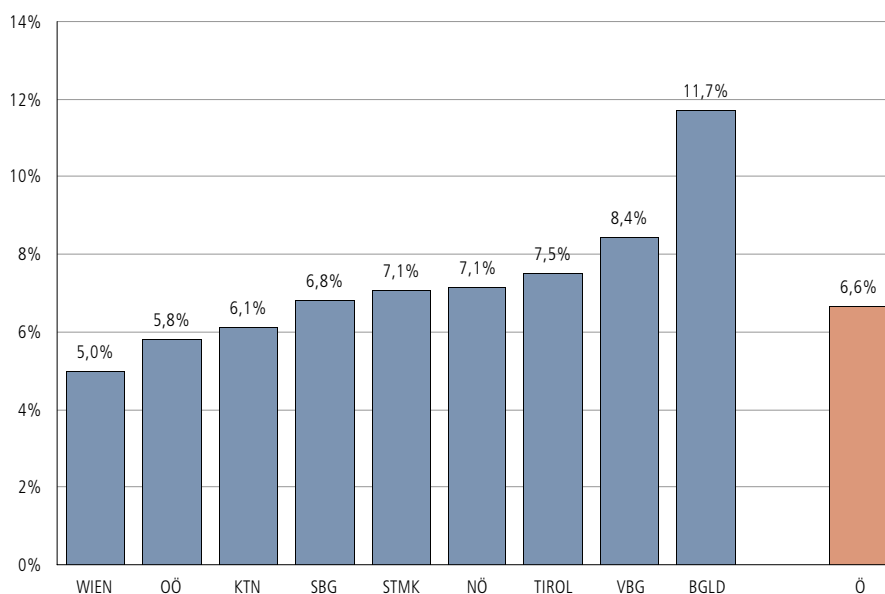
### Alcohol related accidents by time of day



**Table:** Alcohol related accidents by time of day

Daytime	Acc. total	Alcohol related	Fraction [%]	Daytime	Acc. total	Alcohol related	Fraction [%]
00:00-00:59	408	113	27,7	12:00-12:59	2.493	39	1,6
01:00-01:59	510	156	30,6	13:00-13:59	2.530	66	2,6
02:00-02:59	426	146	34,3	14:00-14:59	2.976	63	2,1
03:00-03:59	387	137	35,4	15:00-15:59	3.177	94	3,0
04:00-04:59	424	127	30,0	16:00-16:59	3.284	113	3,4
05:00-05:59	703	152	21,6	17:00-17:59	3.618	162	4,5
06:00-06:59	1.309	88	6,7	18:00-18:59	3.049	222	7,3
07:00-07:59	2.249	63	2,8	19:00-19:59	2.112	194	9,2
08:00-08:59	1.863	41	2,2	20:00-20:59	1.530	204	13,3
09:00-09:59	1.910	46	2,4	21:00-21:59	1.052	189	18,0
10:00-10:59	2.458	41	1,7	22:00-22:59	978	183	18,7
11:00-11:59	2.447	36	1,5	23:00-23:59	764	160	20,9
				Total	42.657	2.835	6,6

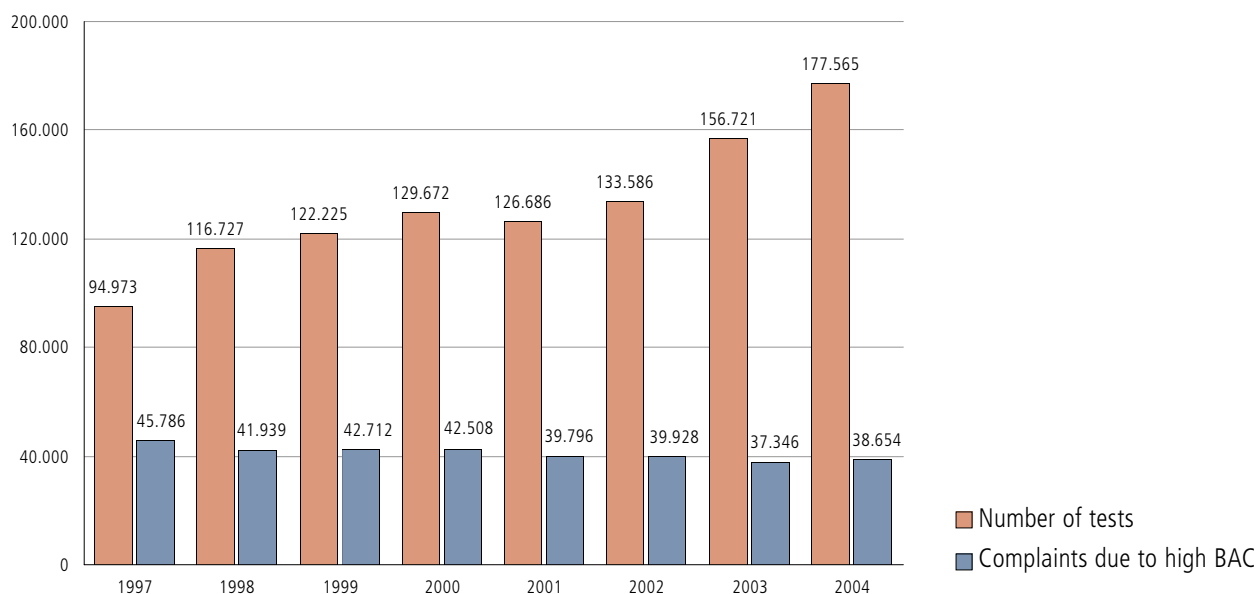
### Fraction of alcohol related accidents per total number of accidents by federal state



**Table:** Alcohol related accidents by federal state

	Accidents caused by alcohol			Fraction per accident total [%]		
	Accidents	Injuries	Fatalities	Accidents	Injuries	Fatalities
BGLD	105	134	1	11,7	11,5	2,9
KTN	187	279	4	6,1	7,0	6,2
NÖ	534	747	20	7,1	7,6	7,4
OÖ	527	750	12	5,8	6,1	7,8
SBG	209	295	7	6,8	7,4	8,6
STMK	516	752	10	7,1	8,0	7,2
TIROL	325	451	9	7,5	7,8	14,1
VBG	155	207	2	8,4	9,0	6,5
WIEN	277	402	2	5,0	5,8	4,7
<b>AUSTRIA</b>	<b>2.835</b>	<b>4.017</b>	<b>67</b>	<b>6,6</b>	<b>7,2</b>	<b>7,6</b>

## Evolution of traffic-supervision concerning alcohol 1997–2004 (BMI)\*



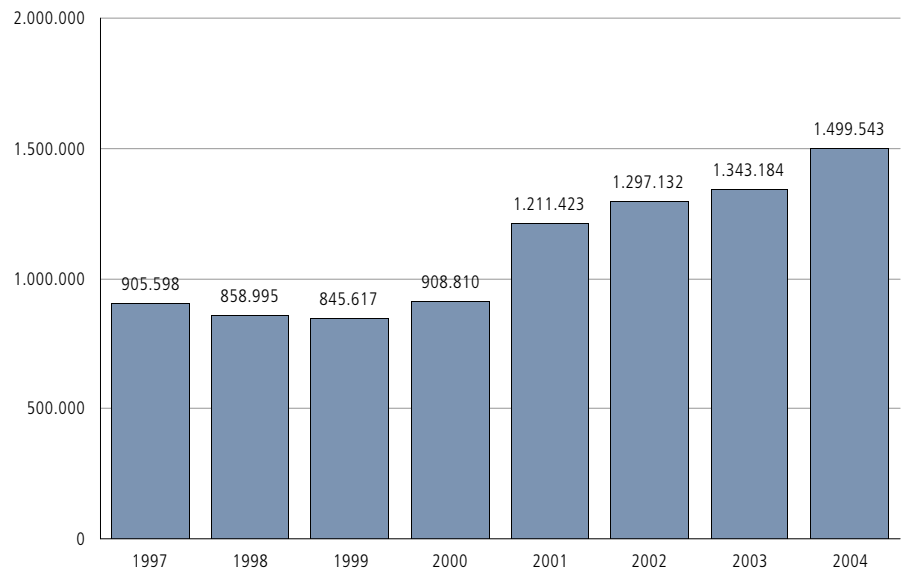
Quelle: BMI Abt II/2

**Table:** Accidents before and after launch of 0,5‰ BAC limit

Accidents with personal injury	Jan. 1992–Dec. 1997 (0,8‰)	Jan. 1998–Dec. 2004 (0,5‰)	Change [%]
Alcohol related accidents	19.158	18.238	-4,8
Accidents total	291.453	296.030	1,6
Fraction of alcohol related accidents	6,6	6,2	-6,3
Injuries - alcohol related	27.277	25.693	-5,8
Injuries total	377.661	386.660	2,4
Fraction of alcohol related injuries	7,2	6,6	-8,0
Fatalities - alcohol related	765	555	-27,5
Fatalities total	8.751	6.741	-23,0
Fraction of alcohol related fatalities	8,7	8,2	-5,8

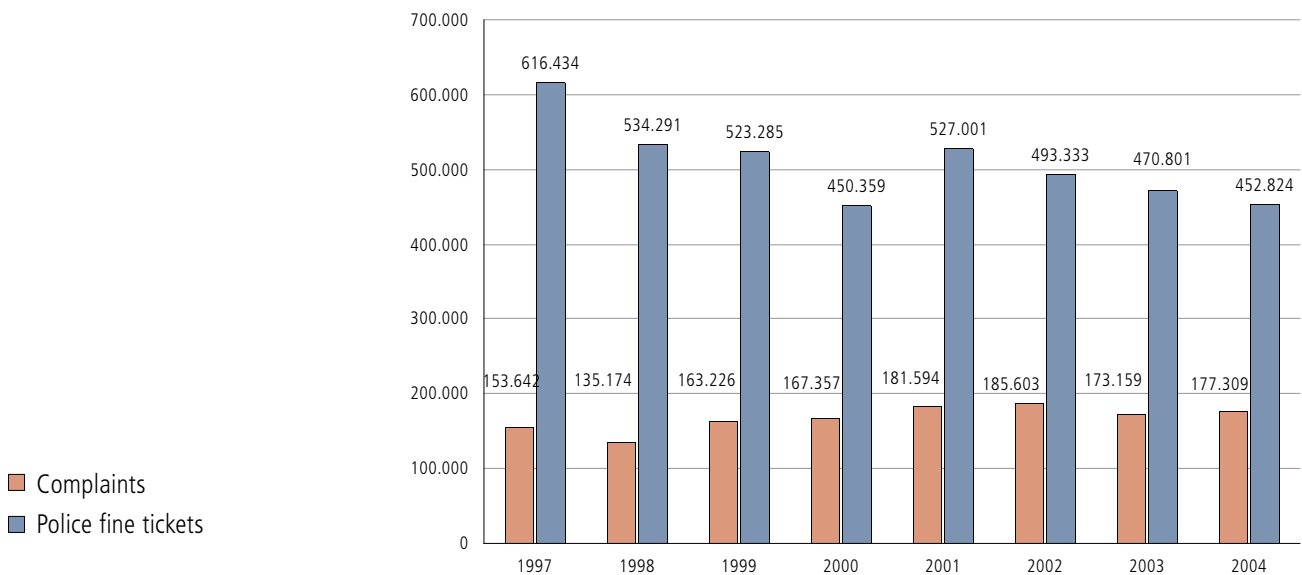
\*)Have a look to: <http://www.bmi.gv.at/verkehrsangelegenheiten/>

### Radar based\* speed monitoring - number of complaints



Source: Bundesministerium für Inneres, Abteilung II/2/d

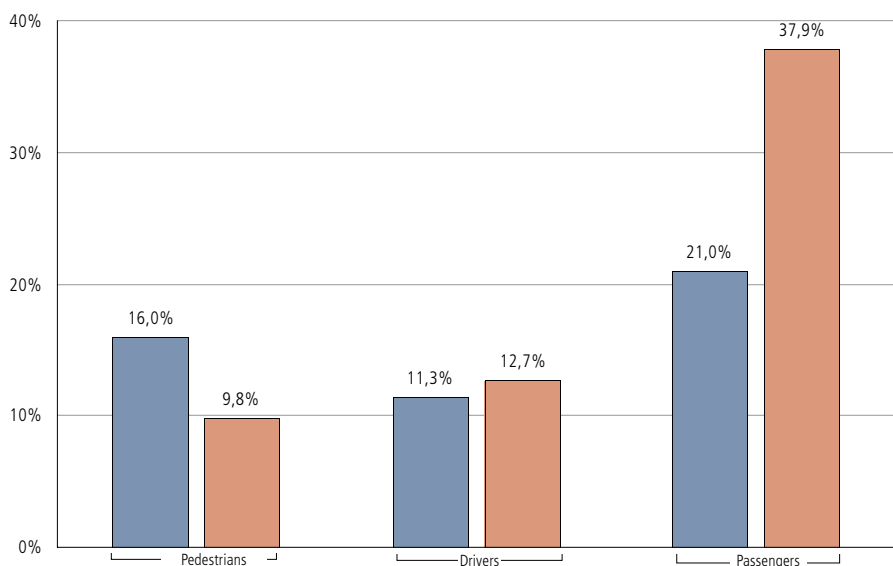
### Laser based speed monitoring (1998-2004)



Source: Bundesministerium für Inneres, Abteilung II/2/d

\*) including video- and section control

## Injuries and fatalities of foreigners



**Table: Injuries and fatalities of foreigners**

	Injuries			Fatalities		
	Total	Foreigners [%]	Fraction	Total	Foreigners [%]	Fraction
Pedestrians	4.270	683	16,0	132	13	9,8
Drivers	38.540	4.374	11,3	606	77	12,7
Passengers	13.047	2.737	21,0	140	53	37,9
<b>Total</b>	<b>55.857</b>	<b>7.794</b>	<b>14,0</b>	<b>878</b>	<b>143</b>	<b>16,3</b>

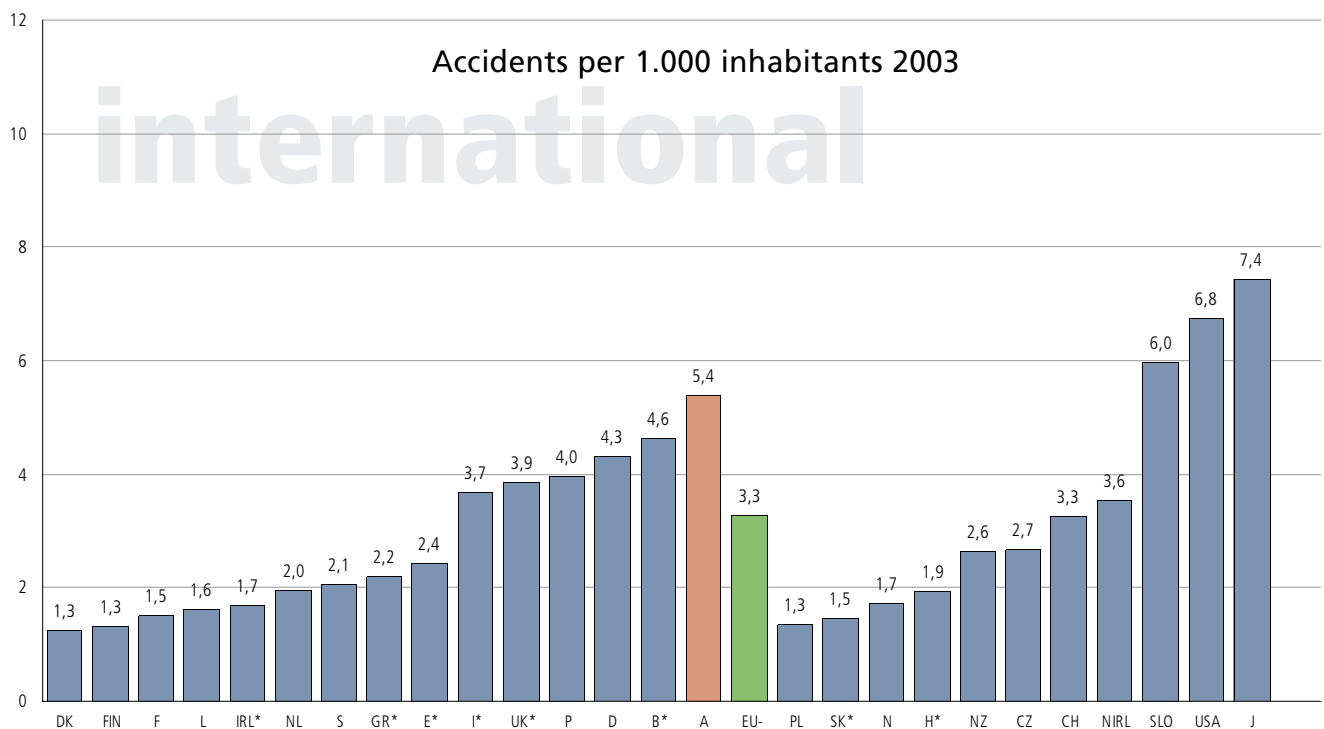


Table: Accidents, injuries and fatalities 2002–2003

	Accidents with personal injury		Injuries		Fatalities		Fatalities per 1 mill. inhabitants	
	2002	2003	2002	2003	2002	2003	2002	2003
A	43.175	43.426	56.684	56.881	956	931	119	115
B**	47.444	-	65.294	-	1.486	-	145	0
D	362.054	354.534	476.413	462.170	6.842	6.613	83	80
DK	7.126	6.749	8.791	8.412	463	432	86	80
E	98.433	99.987	146.917	150.635	5.347	5.399	132	134
F	105.470	90.220	137.839	115.929	7.655	6.058	129	102
FIN	6.196	6.907	8.156	9.088	415	379	80	73
GR**	23.127	-	30.803	-	2.088	-	198	191
I**	211.941	-	301.559	-	6.410	-	111	0
IRL	6.625	-	9.206	-	376	-	96	94
L	771	720	1.100	1.052	62	53	140	118
NL	33.538	31.635	40.682	37.976	987	1.028	61	63
P	42.219	41.495	56.585	55.258	1.675	1.546	177	148
S	16.919	18.365	24.742	27.103	532	529	60	59
UK	228.535	-	310.938	297.274	3.581	3.658	60	61
<b>EU-15</b>	<b>1.233.573</b>	<b>-</b>	<b>1.675.709</b>	<b>-</b>	<b>38.875</b>	<b>-</b>	<b>103</b>	<b>-</b>
CH	23.647	23.840	29.774	30.098	513	546	71	75
CZ	26.586	27.320	34.389	35.438	1.431	1.447	139	142
J	936.721	947.993	1.166.606	1.180.256	9.575	8.877	75	70
N	8.724	7.921	12.393	-	312	280	69	61
NIRL	6.784	6.049	11.764	10.175	150	150	88	61
NZ	10.162	10.615	13.918	14.372	404	461	103	115
SK	7.866	-	10.263	0	610	-	113	148
SLO	10.266	11.910	14.032	17.007	269	242	137	121
USA	1.967.000	1.963.000	2.925.995	2.888.357	42.815	42.643	148	147

Source: IRTAD, 2005

\*) Data 2002  
) Data 2001

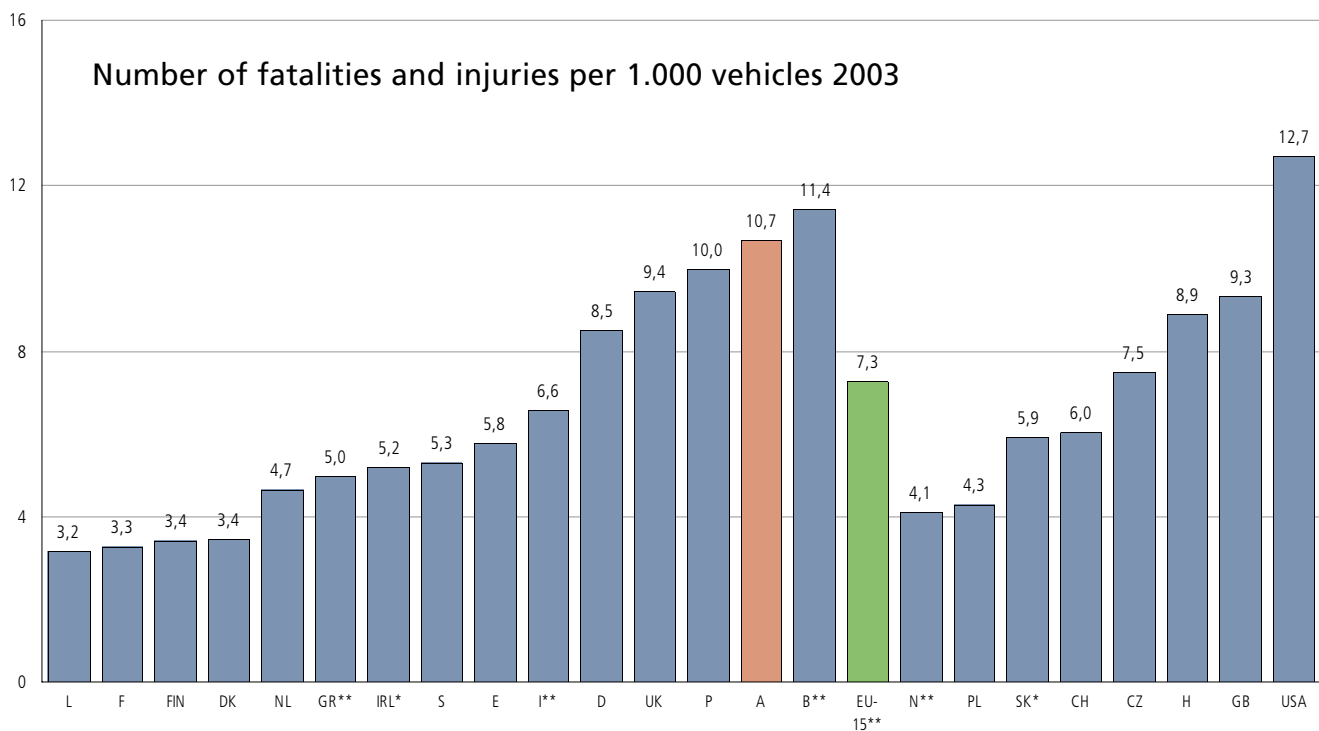


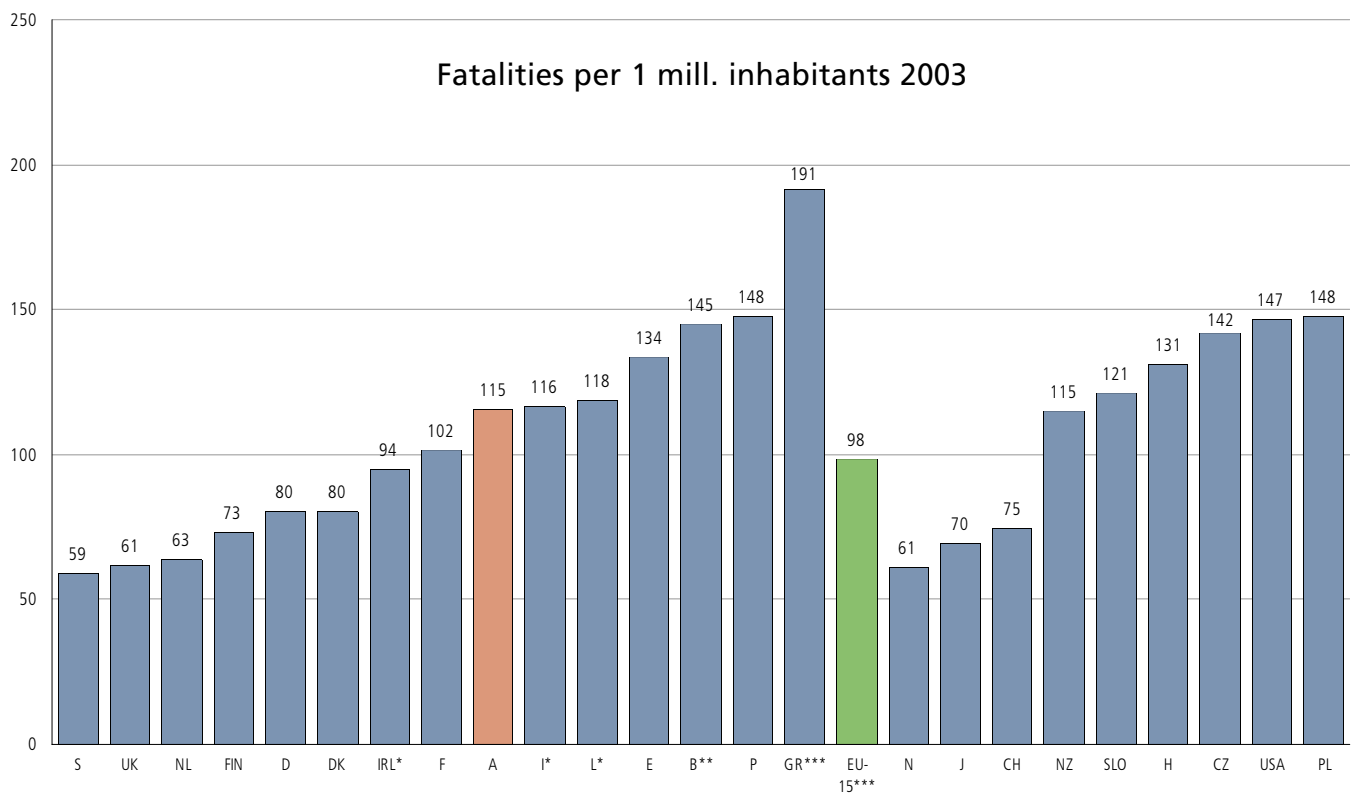
Table: Casualties in thousands 1970 - 2003

	1970	1975	1980	1985	1990	1995	2000	2001	2002	2003
A	72,7	68,3	64,4	61,3	62,0	52,0	55,9	57,2	57,6	57,8
B	107,8	84,5	84,7	76,3	88,2	71,8	69,4	66,8	-	-
D	599,4	521,8	556,0	471,5	522,0	521,6	511,6	501,8	483,3	468,8
DK	26,7	20,9	15,8	14,6	11,3	10,6	9,6	8,9	9,3	8,8
E	90,7	97,8	112,7	131,7	162,4	127,2	155,6	155,1	152,3	156,0
F	344,7	366,9	352,2	281,2	236,1	189,8	169,8	162,1	145,1	121,7
FIN	-	-	9,0	10,1	13,4	10,6	8,9	8,8	8,6	9,5
GR	25,7	23,3	26,7	32,2	29,1	33,2	32,9	32,9	-	-
I	238,4	239,4	231,4	223,2	227,6	266,1	308,0	308,0	-	-
IRL	9,8	7,8	9,1	8,2	9,9	13,1	12,5	10,6	9,6	-
L	2,5	2,9	2,4	2,1	1,8	1,4	1,3	1,2	1,2	1,1
NL	71,4	62,3	58,6	50,0	53,2	52,0	47,2	43,8	41,7	39,0
P	30,3	43,3	43,4	41,4	65,7	67,9	61,6	58,7	58,1	56,6
S	23,5	22,0	20,1	21,5	23,3	21,7	22,6	22,9	25,3	27,1
UK	371,5	332,6	335,9	326,2	352,9	322,2	335,0	326,5	314,5	300,9
<b>EU-15</b>	-	-	<b>1.922,1</b>	<b>1.751,5</b>	<b>1.858,9</b>	<b>1.761,3</b>	<b>1.801,7</b>	<b>1.765,3</b>	-	-
CH	37,7	31,2	33,6	30,7	30,2	29,5	30,7	30,7	30,3	30,6
CZ	-	-	-	-	-	-	33,9	35,0	35,8	36,9
H	32,0	27,7	25,5	26,6	39,4	27,5	23,9	25,4	27,4	28,0
J	997,9	633,3	607,5	690,6	801,5	933,4	1.164,8	-	1.176,2	1.189,1
N	-	-	10,6	12,3	12,2	12,1	-	11,8	-	-
PL	-	-	-	-	66,9	77,1	77,9	73,7	73,3	69,5
SK	-	-	-	-	11,3	12,2	10,7	11,5	10,9	-
SLO	-	-	-	-	-	8,4	11,9	-	14,3	17,2
USA	2.810,7	2.852,8	3.085,9	3.384,2	3.644,8	3.654,9	-	-	-	2.931,0

Source: IRTAD, 2005

\*) Data 2002

\*\*) Data 2001

**Table: Fatalities 1970–2003**

	1970	1975	1980	1985	1990	1995	2000	2001	2002	2003
A	2.574	2.533	2.003	1.524	1.558	1.210	976	958	956	931
B	3.070	2.346	2.396	1.801	1.976	1.449	1.470	1.486	-	-
D	21.653	17.332	15.050	10.070	11.046	9.454	7.503	6.977	6.842	6.613
DK	1.208	827	690	772	634	582	498	431	463	432
E	5.456	5.833	6.522	6.374	9.032	5.751	5.776	5.517	5.347	5.399
F	16.445	14.355	13.499	11.387	11.215	8.891	8.079	8.160	7.655	6.058
FIN	1.055	910	551	541	649	441	396	433	415	379
GR	1.099	1.251	1.446	2.011	2.050	2.411	2.037	-	-	-
I	11.025	10.272	9.220	7.700	7.151	7.033	6.649	6.682	6.736	-
IRL	540	586	564	410	478	437	415	411	376	-
L	132	124	98	79	71	70	76	70	62	53
NL	3.181	2.321	1.996	1.438	1.376	1.334	1.082	993	987	1.028
P	1.615	3.051	2.579	2.138	2.646	2.377	1.860	1.671	1.675	1.546
S	1.307	1.172	848	808	772	572	591	554	532	529
UK	7.771	6.679	6.239	5.342	5.402	3.765	3.580	3.598	3.581	3.658
<b>EU-15</b>	<b>78.131</b>	<b>69.592</b>	<b>63.701</b>	<b>52.395</b>	<b>56.056</b>	<b>45.777</b>	<b>40.988</b>	-	-	-
CH	1.643	1.206	1.209	881	925	692	592	544	513	546
CZ	1.983	1.632	1.261	987	1.291	1.588	1.486	1.334	1.431	1.447
H	1.627	1.678	1.630	1.756	2.432	1.589	1.200	1.239	1.429	1.326
J	21.795	14.030	11.388	12.039	14.595	12.670	10.403	10.060	9.575	8.877
KOR	3.529	4.370	6.449	8.650	14.174	11.871	10.236	8.097	7.222	7.212
N	560	539	362	402	332	305	341	275	312	280
NIRL	272	313	229	177	185	144	171	148	150	150
NZ	655	628	597	746	729	581	462	455	404	461
PL	3.446	5.633	6.002	4.688	7.333	6.900	6.294	5.534	5.827	5.640

Source: IRTAD, 2005

\*) Data 2002  
) Data 2001

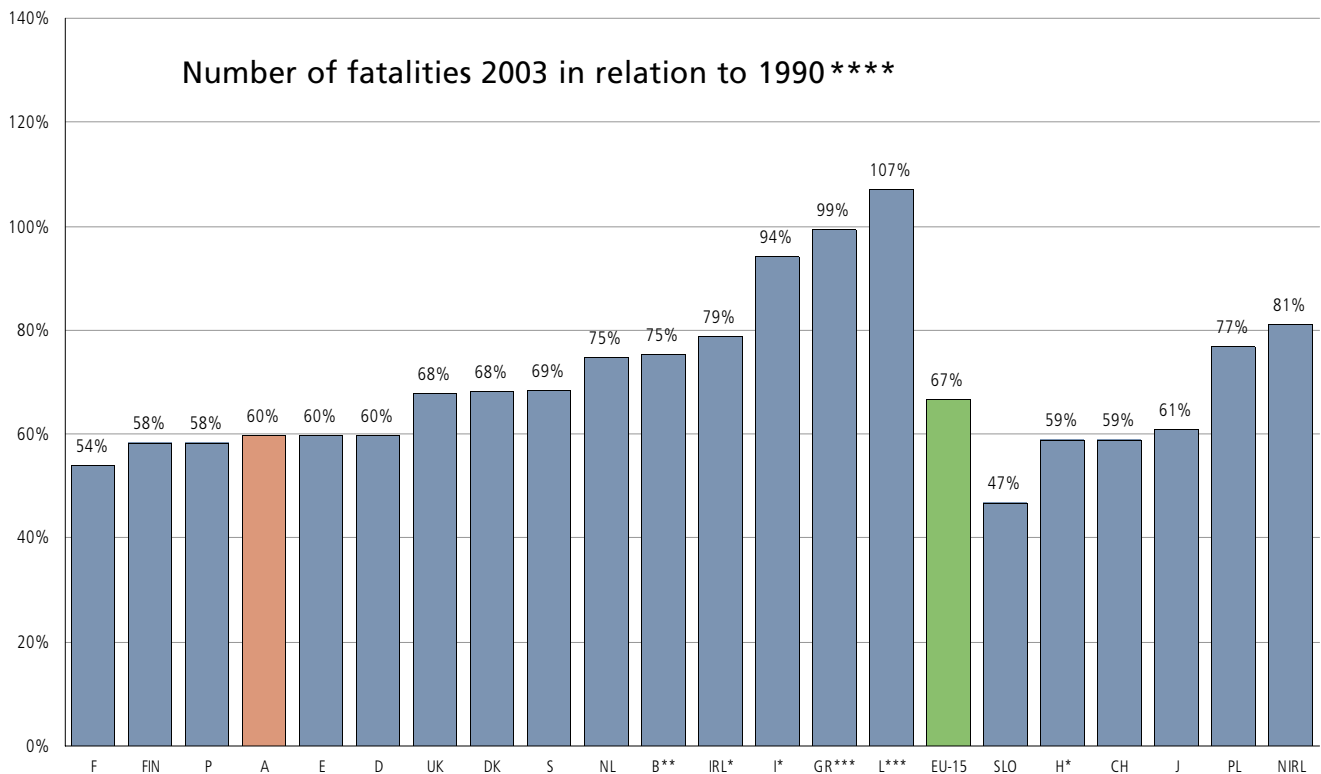


Table: Fatalities by age (per 1 mill. inhabitants per age group) 2003

	0-5	6-9	10-14	15-17	18-20	21-24	25-34	35-44	45-54	55-59	60-64	>64
A	23	16	41	144	243	261	114	93	114	106	113	158
B**	29	43	36	129	285	341	214	153	115	110	102	153
D	10	19	22	112	255	174	97	73	64	55	59	92
DK	17	18	30	91	186	143	97	87	60	61	56	124
E	23	26	30	139	263	224	178	130	123	108	118	118
F	15	17	28	117	243	233	137	100	80	77	77	113
FIN	29	4	33	64	143	115	70	68	67	71	52	120
GR***	26	22	26	149	-	350	251	191	172	144	163	234
I*	16	16	36	104	210	231	0	0	95	98	80	133
IRL*	21	19	24	102	170	176	135	67	54	86	104	138
L***	29	45	40	71	357	550	309	115	145	0	0	172
NL	13	22	31	93	151	120	76	53	44	46	62	100
P	32	21	44	93	190	296	191	148	144	103	142	171
S	9	11	18	70	161	106	65	56	54	53	61	77
UK	10	10	20	86	182	121	82	61	49	41	39	69
<b>EU-15</b>	<b>15</b>	<b>18</b>	<b>27</b>	<b>109</b>	<b>228</b>	<b>201</b>	<b>104</b>	<b>77</b>	<b>81</b>	<b>74</b>	<b>75</b>	<b>112</b>
CZ	17	29	27	104	252	221	178	157	135	159	109	163
H*	42	34	21	64	130	192	166	188	171	143	154	148
J	12	18	11	63	110	75	52	40	50	64	79	150
N	20	20	26	70	210	63	85	62	36	40	53	79
NIRL	15	52	39	136	263	159	129	75	44	85	76	91

Source: IRTAD, 2005

\*) Data 2002

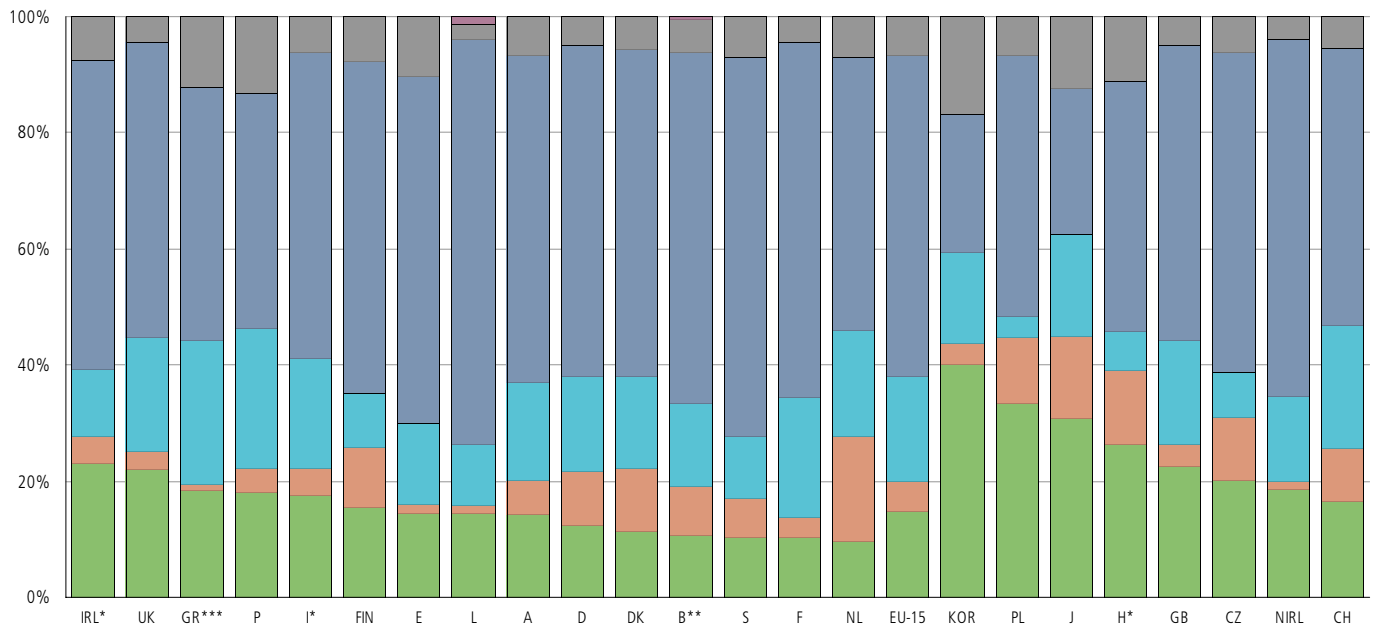
\*\*) Data 2001

\*\*\*) Data 2000

\*\*\*\*) Index: 1990=100%

Institute for Road Accident Statistics

### Fatalities by participation 2003, sorted by fraction of pedestrians



- Unknown
- Other motor vehicles
- Passenger cars
- Power two-wheelers
- Cyclists
- Pedestrians

**Table: Fatalities by participation in traffic 2003**

	Pedestrians	Cyclists	Powered two-wheelers	Cars	Other vehicles	Unknown participation	Total
A	132	56	156	524	63	0	931
B**	158	128	210	899	85	6	1.486
D	812	616	1.080	3.774	331	0	6.613
DK	49	47	68	244	24	0	432
E	787	78	758	3.211	565	0	5.399
F	626	201	1.253	3.709	270	0	6.059
FIN	59	39	35	217	29	0	379
GR***	375	22	502	891	245	2	2.037
I*	1.188	315	1.268	3.555	410	0	6.736
IRL*	86	18	44	200	28	0	376
L	11	1	8	53	2	1	76
NL	97	188	189	483	71	0	1.028
P	280	63	371	630	202	0	1.546
S	55	35	56	346	37	0	529
UK	802	116	715	1.861	164	0	3.658
<b>EU-15</b>	<b>5.524</b>	<b>1.923</b>	<b>6.713</b>	<b>20.597</b>	<b>2.526</b>	<b>9</b>	<b>37.292</b>
CH	91	48	117	260	30	0	546
CZ	290	159	112	798	88	0	1.447
GB	775	130	609	1.747	170	0	3.431
H*	377	182	93	618	159	0	1.429
J	2.739	1.243	1.569	2.230	1.096	0	8.877
KOR	2.896	256	1.138	1.717	1.205	0	7.212
N	33	13	36	193	5	0	280
NIRL	28	2	22	92	6	0	150
NZ	58	6	28	349	20	0	461

Source: IRTAD, 2005

\*) Data 2002

\*\*) Data 2001

\*\*) Data 2001

\*\*) Data 2001

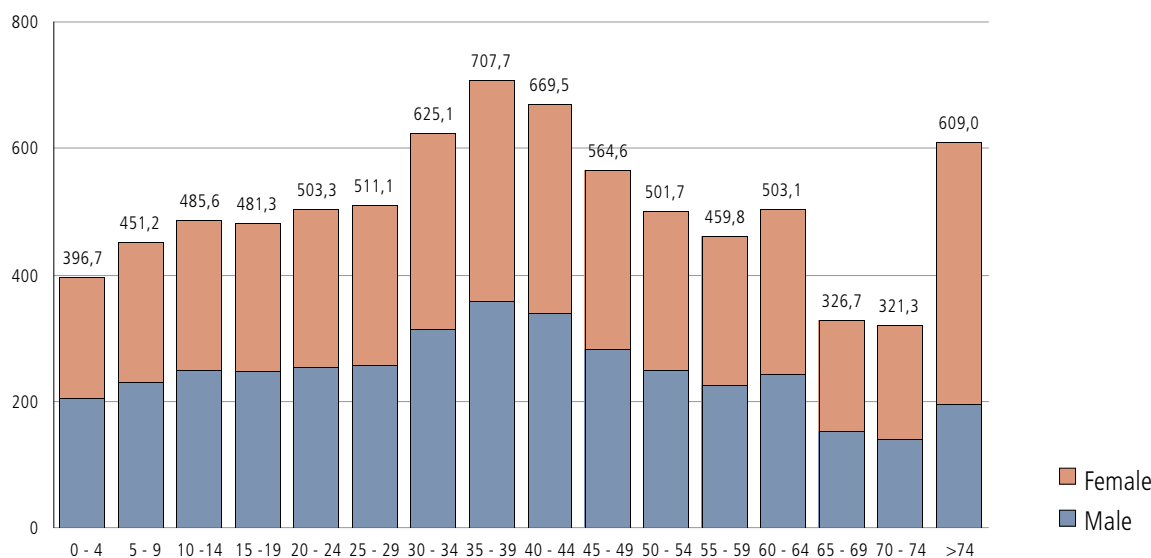
\*\*) Data 2001

\*\*) Data 2001

Institute for Road Accident Statistics

# statistical parameters

Population by age group (in 1.000)

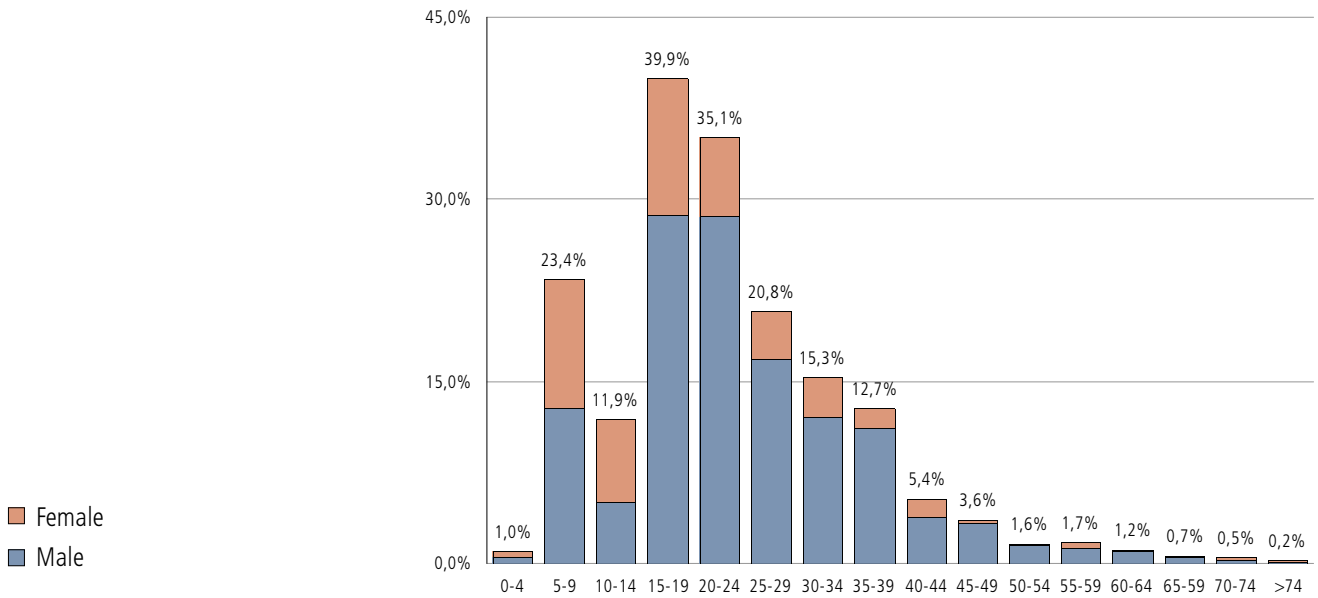


Source: STATISTIK AUSTRIA, 2003; Volkszählung 2001

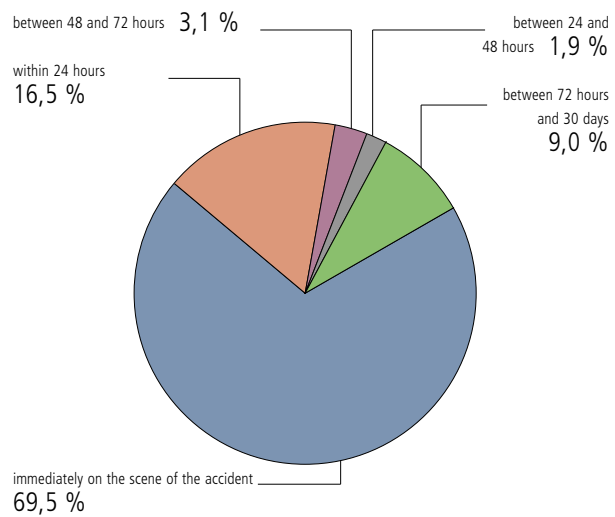
**Table:** Total number of deceased and number of people killed in road accidents by age group

Age group.	0-4	5-9	10-14	15-19	20-24	25-29	30-34	35-39	40-44	45-49	50-54	55-59	60-64	65-69	70-74	>74	Total
All deceased in Austria 2003																	
Male	228	31	30	179	232	244	303	460	719	943	1.527	1.997	2.938	3.119	4.892	17.324	35.166
Female	153	16	29	69	73	83	122	240	360	489	731	1.003	1.444	1.782	3.238	31.133	40.965
Total	381	47	59	248	305	327	425	700	1.079	1.432	2.258	3.000	4.382	4.901	8.130	48.457	76.131
Fatalities related to road accidents																	
Male	2	6	3	71	87	55	51	78	42	47	33	38	42	24	20	64	663
Female	2	5	4	28	20	13	14	11	16	5	4	13	9	8	17	46	215
Total	4	11	7	99	107	68	65	89	58	52	37	51	51	32	37	110	878

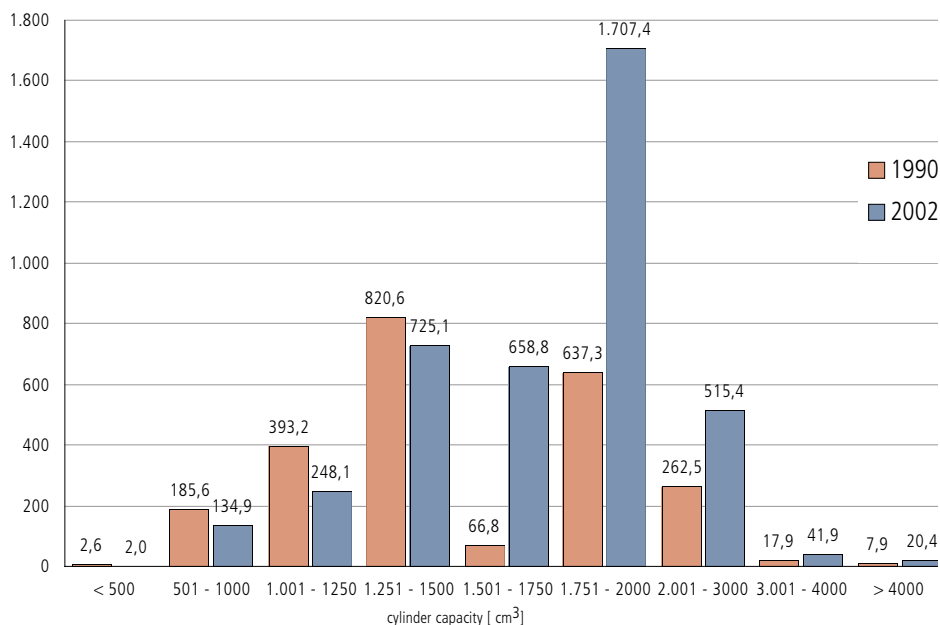
### Percentage of fatalities in road accidents and all deceased by age



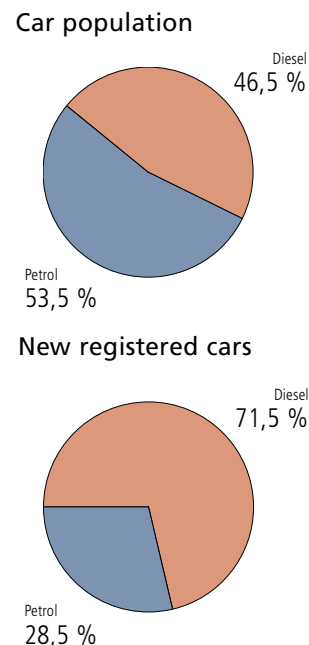
### Number of fatalities in road accidents by timespan between accident and death



### Cars in 1.000 by cylinder capacity 1990 and 2003



### Diesel versus petrol 2003



**Table:** Passenger cars in thousands and new registrations 2003 by cylinder capacity

Cylinder capacity [cm³]	Passenger cars		New registered passenger cars	
	Total [1.000]	Total	Fraction [%]	Difference to 2002 [%]
< 500	2,0	k.A	k.A	-
501 - 1.000	134,9	5.480	0,0	-0,2
1.001 - 1.250	248,1	27.756	0,1	0,4
1.251 - 1.500	725,1	42.041	0,1	0,1
1.501 - 1.750	658,8	21.588	0,1	0,0
1.751 - 2.000	1.707,4	156.624	0,5	0,0
2.001 - 3.000	515,4	41.022	0,1	0,0
3.001 - 4.000	41,9	3.638	0,0	0,3
>4.000	20,4	1.972	0,0	0,2
<b>TOTAL</b>	<b>4054,3</b>	<b>300.121</b>	<b>100</b>	<b>0,1</b>

Source: STATISTIK AUSTRIA, 2005

## International statistical parameters

Table: International statistical parameters 2003

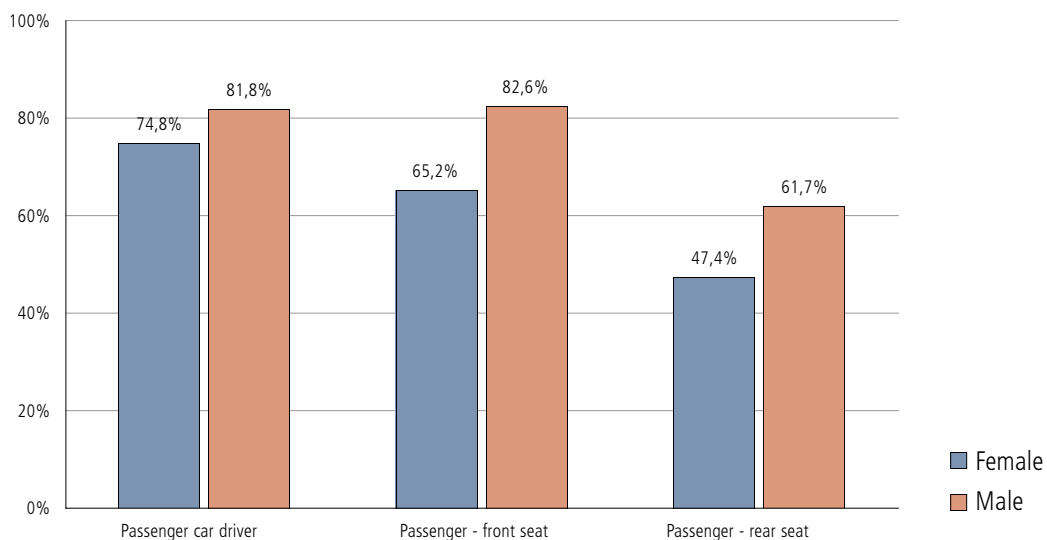
	Inhabitants	Area	Density	Road network		Cars		Kilometers traveled	
	[1.000]	[qkm]	[Inh./sqkm]	[km]	[km/sqkm]	in 1.000	per 1.000 Inh.	per car [km]	[mill. car-km]
A	8.067	83.850	96	106.585	1,3	3.987	494,2	14.891,6	59.373
B	10.263**	32.528	316	149.018*	4,6	4.740**	461,9	16.452,7	77.986
D	82.537	357.039	231	626.981	1,8	44.657	541,1	12.939,7	577.848
DK	5.384	43.098	125	72.074	1,7	1.888	350,7	20.579,4	38.854
E	40.409*	504.750	80	664.852**	1,3	18.733*	463,6	-	-
F	59.625	551.208	108	994.354	1,8	29.160	489,1	-	-
FIN	5.206	338.145	15	79.064	0,2	2.195	421,6	19.391,8	42.565
GR	10.554***	131.944	80	-	-	3.195***	302,7	-	-
I	57.844*	301.328	192	-	-	33.706*	582,7	-	-
IRL	3.979	70.823	56	95.752**	1,4	1.448*	363,9	20.745,2	30.039
L	448	2.586	173	2.875	1,1	-	-	0,0	-
NL	16.192	41.528	390	117.430****	2,8	6.855	423,4	14.722,8	100.925
P	10.475	92.631	113	-	-	3.683	351,6	-	-
S	8.941	449.964	20	212.000	0,5	4.045	452,4	-	-
UK	59.554	244.061	244	-	-	26.953	452,6	-	-
<b>EU-15</b>	<b>379.478</b>	<b>3.245.483</b>	<b>117</b>	-	-	-	-	-	-
AUS	19.881	7.692.024	3	810.236	0,1	10.366	521,4	14.638,5	151.743
CDN	31.630	9.984.670	3	1.408.800	0,1	14.444*	456,7	16.592,1	239.656
CH	7.318	41.293	177	-	-	3.754	513,0	13.985,6	52.502
CZ	10.203	78.860	129	55.422	0,7	3.647	357,4	8.768,9	31.980
GB	57.851	229.898	252	392.321	1,7	26.240	453,6	14.977,4	393.007
H	10.142	93.033	109	135.555	1,5	2.630	259,3	-	-
J	127.619	377.887	338	1.177.278*	3,1	54.541	427,4	9.702,9	529.208
KOR	47.925	99.585	481	96.037	1,0	9.737	203,2	17.294,0	168.392
N	4.577	323.873	14	91.825	0,3	1.900*	415,1	14.471,1	27.495
NIRL	1.703	14.163	120	-	-	713	418,7	-	-
NZ	4.009	269.122	15	92.493	0,3	-	-	-	-
PL	38.191	322.577	118	377.289	1,2	11.244	294,4	-	-
SK	5.379*	49.035	110	17.755*	0,4	1.293**	240,4	-	-
SLO	1.996	20.273	98	20.156	1,0	919	460,4	14.153,4	13.007
USA	290.810	9.631.418	30	6.395.705	0,7	131.072	450,7	19.452,2	2.549.641

Source: IRTAD, 2005

\*) Data 2002  
 \*\*) Data 2001  
 \*\*\*) Data 2000  
 \*\*\*\*) Data 1999

Institute for Road Accident Statistics

## Car passengers using seat belts 2004



**Table:** Car Passengers using seat belts by sex 2004

	Drivers [%]		Passenger - front seat [%]		Passenger - rear seat [%]	
	Male	Female	Male	Female	Male	Female
Inside urban area	68,6	76,6	58,6	76,4	38,7	56,9
Outside urban area	76,6	84,6	67,8	85,4	47,9	60,3
Motorway	81,5	87,1	71,2	87,2	60,3	71,1
<b>Total</b>	<b>74,8</b>	<b>81,8</b>	<b>65,2</b>	<b>82,6</b>	<b>47,4</b>	<b>61,7</b>

Source: Calculated by KfV

### Front passengers using seat belts

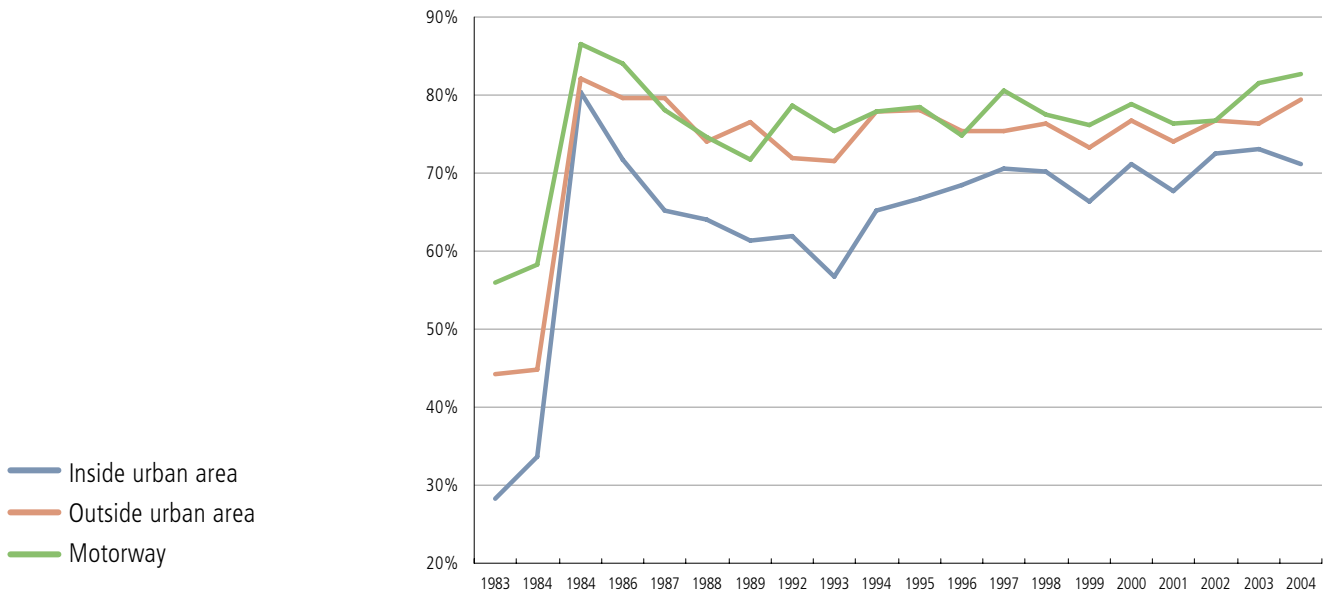
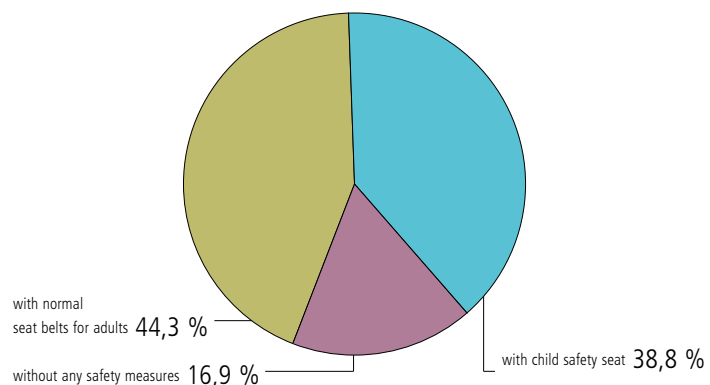


Table: Use of seat belts in passenger cars in front seats [%] 1983–2004

	1983	1984*	1984**	1987	1992	1993	1994	1995	1996	1997	1998	1999	2000	2001	2002	2003	2004
Inside urban a.	28,2	33,7	80,3	65,2	62,0	56,7	65,2	66,8	68,4	70,5	70,1	66,4	71,2	67,7	72,5	73,0	71,2
Outside urban a.	44,3	44,9	82,1	79,7	71,9	71,5	77,9	78,1	75,3	75,3	76,4	73,3	76,7	74,1	76,7	76,3	79,5
Motorway	55,9	58,3	86,6	78,1	78,6	75,3	77,9	78,5	74,8	80,5	77,5	76,1	78,9	76,3	76,8	81,6	82,7

Source: Calculations made by KfV

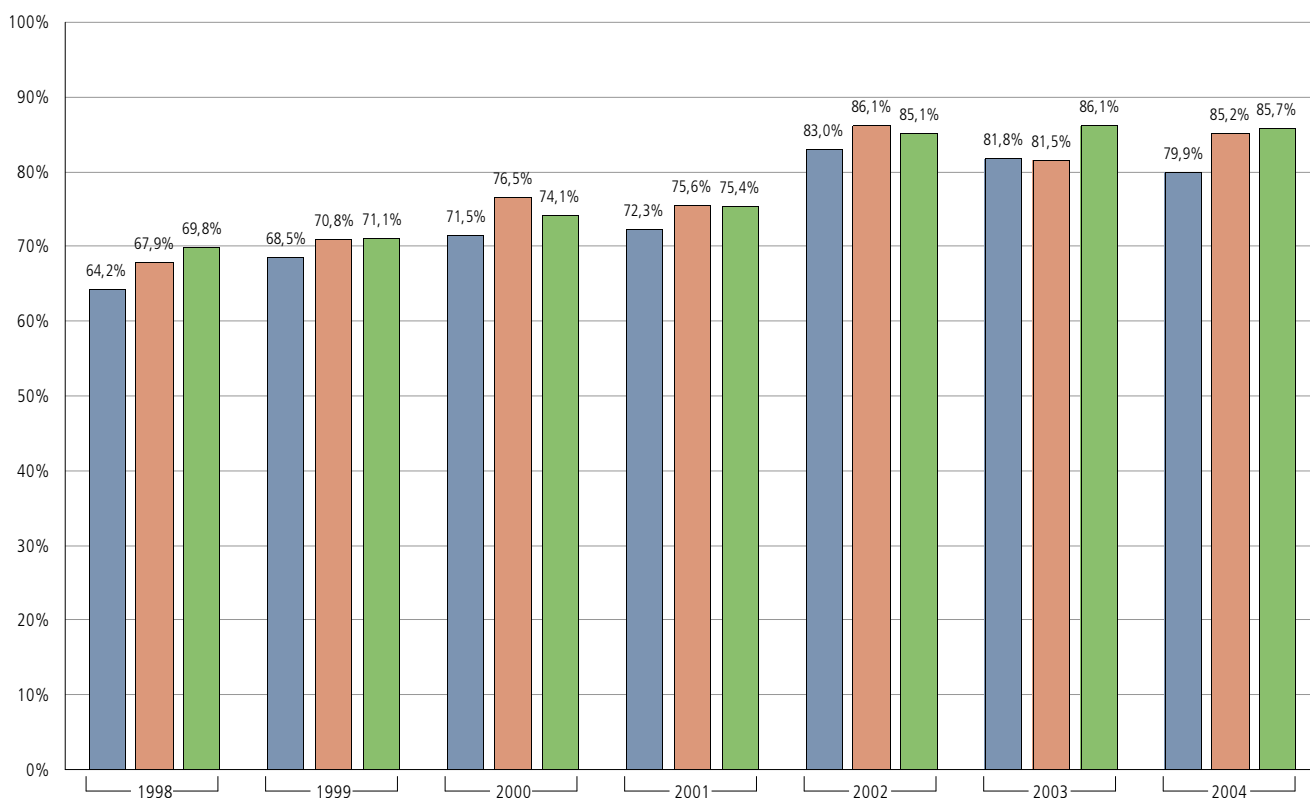
### Use of safety measures for child safety features in passenger cars



\*) before 1.7.1984 - Introduction of obligatory seat belt use with subpoena

\*\*) after 1.7.1984 - Introduction of obligatory seat belt use with subpoena

### Child safety features in cars 1998–2004 (child safety seat or seat belt)



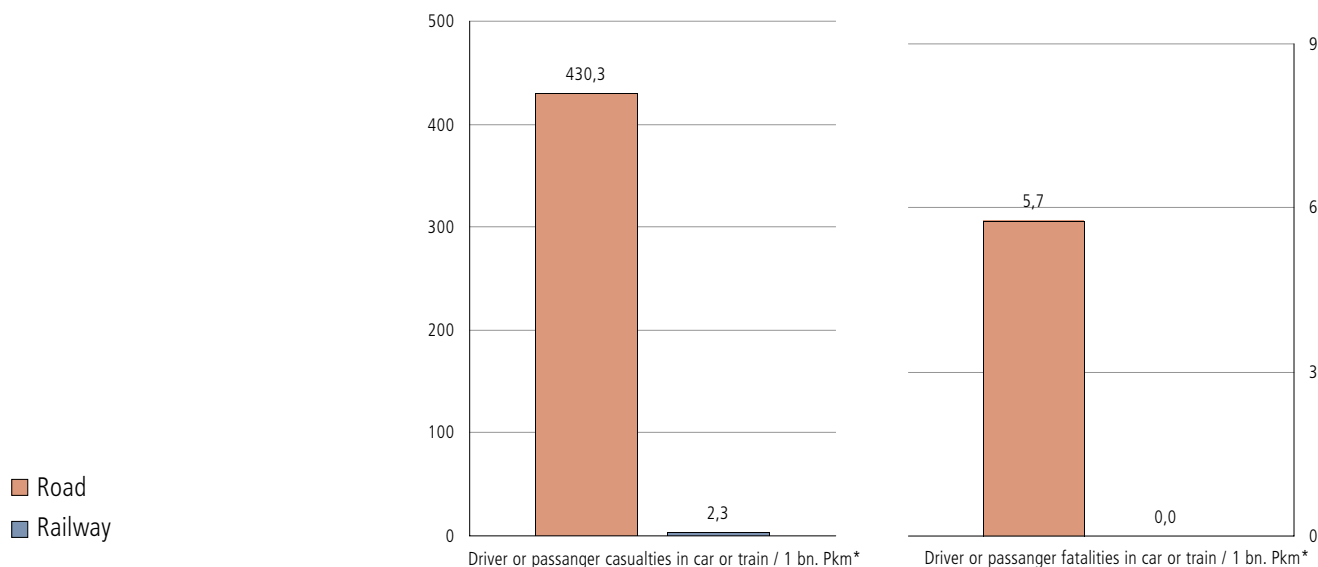
**Table:** Use of child safety seats in passenger cars 1998–2004

	1998	1999	2000	2001	2002	2003	2004
Inside urban area	64,2	68,5	71,5	72,3	83,0	81,8	79,9
Outside urban area	67,9	70,8	76,5	75,6	86,1	81,5	85,2
Motorway	69,8	71,1	74,1	75,4	85,1	86,1	85,7

Source: Calculations made by KfV

- Inside urban area
- Outside urban area
- Motorway

### Rail and road accidents - Comparison of transport risks



**Table: Rail and road accidents**

Accident Data	Rail	Road
Accidents with damage to persons	84	42.657
Casualties	85	56.735
Fatalities	28	878
Driver or passenger injuries and fatalities in car or train	19	35.928
Fatalities	0	480
Severe injuries	1	3.165
Slight injuries	18	28.015
Severity of injury unknown	0	4.268
<b>Density of accidents / 1.000 km net-length</b>		
Accidents	15	400
Casualties	15	532
Driver or passenger injuries and fatalities in car or train	3	337
Fatalities	5	8
Driver or passenger fatalities in car or train	0	5

Quelle: Österreichische Bundesbahnen, Abt. Netz – Betrieb – Sicherheit

\*) person - kilometers

# book series: "Verkehr in Österreich"

These books have been published by the "Austrian Safety and Prevention Board" in co-operation with "Allgemeine Unfallversicherungsanstalt (AUVA)":

- Heft 1: **UNFALLSTATISTIK 1987** ; GRAF P., ESBERGER R. & G. DENDZIG; Wien 1988
- Heft 2: **PROBLEM WEGUNFÄLLE** ; KfV – Verkehrspsychologisches Institut, Institut für Verkehrs- und Fahrzeugtechnik; Wien 1988
- Heft 3: **DAS UNFALLGESCHEHEN IN ÖSTERREICHS GEMEINDEN 1988** ; KfV – Institut für Verkehrstechnik und Unfallstatistik; Wien 1989
- Heft 4: **VERKEHRSBERUHIGUNG – SICHERHEIT ODER ÄRGERNIS?** ; HENÖKL H.; Tagungsbericht vom 15. Dezember 1988 in Graz; Wien 1989
- Heft 5: **UNFALLSTATISTIK 1988** ; KfV – Institut für Verkehrstechnik und Unfallstatistik; Wien 1989
- Heft 6: **DAS UNFALLGESCHEHEN IN ÖSTERREICHS GEMEINDEN 1989** ; KfV – Institut für Verkehrstechnik und Unfallstatistik; Wien 1990
- Heft 7: **UNFALLSTATISTIK 1989** ; KfV – Institut für Verkehrstechnik und Unfallstatistik; Wien 1990
- Heft 8: **DAS UNFALLGESCHEHEN IN ÖSTERREICHS GEMEINDEN 1990** ; KfV – Institut für Verkehrstechnik und Unfallstatistik; Wien 1991
- Heft 9: **UNFALLSTATISTIK 1990** ; KfV – Institut für Verkehrstechnik und Unfallstatistik; Wien 1991
- Heft 10: **OFFENE GRENZEN – GESCHLOSSENE KOLONNEN?** Verkehrs(sicherheits)probleme und Lösungsansätze angesichts der Öffnung der Ostgrenzen. Symposium im Wiener Rathaus vom 22.–23. Oktober 1990, Tagungsbericht, KfV; Wien 1991
- Heft 11: **UNFALLSTATISTIK 1991** ; KfV – Institut für Verkehrstechnik und Unfallstatistik; Wien 1992
- Heft 12: **DAS UNFALLGESCHEHEN IN ÖSTERREICHS GEMEINDEN 1991** ; KfV – Institut für Verkehrstechnik und Unfallstatistik; Wien 1992
- Heft 13: **UNFALLSTATISTIK 1992** (ergänzt durch die Landes-Unfallstatistik der Bundesländer)  
KfV – Institut für Verkehrstechnik und Unfallstatistik; Wien 1993
- Heft 14: **DAS UNFALLGESCHEHEN IN ÖSTERREICHS GEMEINDEN 1992** ; KfV – Institut für Verkehrstechnik und Unfallstatistik; Wien 1993
- Heft 15: **UNFALLSTATISTIK 1993** (ergänzt durch die Landes-Unfallstatistik der Bundesländer)  
KfV – Institut für Verkehrstechnik und Unfallstatistik; Wien 1994
- Heft 16: **DAS UNFALLGESCHEHEN IN ÖSTERREICHS GEMEINDEN 1993** ; KfV – Institut für Verkehrstechnik und Unfallstatistik; Wien 1994
- Heft 17: **UNFALLSTATISTIK 1994** (ergänzt durch die Landes-Unfallstatistik der Bundesländer)  
KfV – Institut für Verkehrstechnik und Unfallstatistik; Wien 1995
- Heft 18: **DAS UNFALLGESCHEHEN IN ÖSTERREICHS GEMEINDEN 1994** ; KfV – Institut für Verkehrstechnik und Unfallstatistik; Wien 1995
- Heft 19: **UNFALLSTATISTIK 1995** (ergänzt durch die Landes-Unfallstatistik der Bundesländer)  
KfV – Institut für Verkehrstechnik und Unfallstatistik; Wien 1996
- Heft 20: **INLINE-SKATEN**. Erhebungen, Analyse und Maßnahmenvorschläge. ; ROBATSCH K., SCHRAMMEL E., KRÄUTLER C. & E. FRANZL; Wien 1996

- Heft 21: **FAHRLEISTUNGEN.** Untersuchungen über Kfz-Fahrleistungen in Österreich, Deutschland und der Schweiz im Überblick. RISSER A.; Wien 1996
- Heft 22: **UNFALLSTATISTIK 1996** (ergänzt durch die Landes-Unfallstatistik der Bundesländer)  
KfV – Institut für Verkehrstechnik und Unfallstatistik; Wien 1997
- Heft 23: **QUANTITATIVE INDIKATOREN DER STRASSENVERKEHRSSICHERHEIT IN DER BUNDESREPUBLIK DEUTSCHLAND 1975–1995.** CERWANKA P. & G. HAUGER; Wien 1997
- Heft 24: **UNFALLSTATISTIK 1997** (ergänzt durch die Landes-Unfallstatistik der Bundesländer)  
KfV – Institut für Verkehrstechnik und Unfallstatistik; Wien 1998
- Heft 25: **EFFIZIENZUNTERSUCHUNG DER LKW-ÜBERHOLVERBOTE 7,5T AUF AUTOBAHNEN IN NIEDERÖSTERREICH.** TRIMMEL P.; St. Pölten 1998
- Heft 26: **UNFALLSTATISTIK 1998** (ergänzt durch die Landes-Unfallstatistik der Bundesländer)  
KfV – Institut für Verkehrstechnik und Unfallstatistik; Wien 1999
- Heft 27: **UNFALLSTATISTIK 1999** (ergänzt durch die Landes-Unfallstatistik der Bundesländer)  
KfV – Institut für Verkehrstechnik und Unfallstatistik; Wien 2000
- Heft 28: **SICHERHEIT FÜR KINDER IM STRASSENVERKEHR.** Eine Aktion des Bundeslandes Niederösterreich. TRIMMEL P., KLEMENJAK W. & E. KREINER.; St. Pölten 1999
- Heft 29: **AUSWIRKUNGEN VON „BLINKENDEN GEFAHRENZEICHEN“ ANHAND DES GESCHWINDIGKEITSVERHALTENS DER KRAFTFAHRER.**  
TRIMMEL P.; St. Pölten 2000
- Heft 30: **SICHERHEITSVERHALTEN VON MOTORISIERTEN VERKEHRSTEILNEHMERN – ERHEBUNGEN UND MESSUNGEN 1999 ;** WANNENMACHER E., TEUFELSBRUCKER D., MACHATA K. & E. SCHRAMMEL; Wien 2000
- Heft 31: **UNFALLSTATISTIK 2000** (ergänzt durch die Landes-Unfallstatistik der Bundesländer)  
KfV – Institut für Verkehrstechnik und Unfallstatistik; Wien 2001
- Heft 32: **UNFALLSTATISTIK 2001 ;** KfV – Institut für Verkehrstechnik und Unfallstatistik; Wien 2002
- Heft 33: **GESCHWINDIGKEITSVERHALTEN VON MOTORISIERTEN VERKEHRSTEILNEHMERN - MESSUNGEN 2000/2001 ;** WANNENMACHER E., TEUFELSBRUCKER D. & E. SCHRAMMEL  
KfV – Institut für Verkehrstechnik; Wien 2002
- Heft 34: **UNFALLSTATISTIK 2002 ;** KfV – Institut für Unfallstatistik; Wien 2003
- Heft 35: **VERKEHRSSICHERHEIT IM GEMEINDEVERGLEICH UNTER EINBEZIEHUNG KOMMUNALER BEZUGSGRÖßEN ;** RISSER A.  
KfV – Institut für Verkehrstechnik; Wien 2003
- Heft 36: **UNFALLSTATISTIK 2003 ;** KfV – Institut für Unfallstatistik; Wien 2003

## Accident

Injury road accidents are defined as accidents that are related to road traffic where persons suddenly become injured, are killed, or receive other damages to their health. This event must take place in a public area. Additionally at least one moving vehicle has to be involved.

## Participants

The following persons are so-called participants in an accident:

- all injured and killed pedestrians, drivers or passengers,
- all non-injured drivers,
- all non-injured passengers, including those under the influence of alcohol, that obstructed the driver
- all non-injured pedestrians, in particular those under the influence of alcohol, if they were involved in the accident due to their behavior.

## Active Participants

Active participants include all vehicle drivers and involved pedestrians.

## Driver

A driver is any person who steers a vehicle, leads a draft, pack or saddled animal, is riding an animal or drives herds.

## Pedestrians

Also includes persons who push a baby carriage or a vehicle, or who are busy at a vehicle.

## Passive Participants

All passengers.

## Passenger

Each person that is in or on a vehicle, besides the driver.

## Children

People aged between 0 and 14 years.

## Child accident

An accident where at least one active participant is a child between the age of 0 to 14 years.

## Seniors

People who are 65 years or older.

## Alcohol related accidents

An alcohol related accident is when at least one active participant is under the influence of alcohol, an alcohol test is positive or a clinical study shows that one was under the influence of alcohol. "A person is legally impaired by alcohol with a blood alcohol level of 0.8 g/l (0.8 per mill) and above, or with a breath alcohol level of 0.4 mg/l and above" (cp. StVO §5 para. 1). Since 6 January 1998, a motor vehicle may only "be operated or driven if the driver has a blood alcohol level less than 0.5 g/l (0.5 per mill), or a breath alcohol level less than 0.25 mg/l"(cp. FSG §14 para. 8).

## Wrong Way Drivers

Drivers of vehicles, which drive against the flow of traffic on motorways.

## Casualties

Persons who are either injured (severe, slight, or unknown severity) or killed.

## Injured

The classification of the degree of injury severity is according to the regulations of the Austrian Criminal Code ("Strafgesetzbuch" - StGB).

## Fatality

A fatality in road accidents in Austria is a person who died immediately, or within 30 days, due to the road accident. In the years 1966-1991, a road accident fatality was defined as one who died immediately, or within 72 hours. In order to make these data comparable, they were multiplied by a factor of 1.12.

## Severely injured

Whether an injury is severe or slight is determined by §84 of the Austrian criminal code (StGB). A severe injury is one that causes a health problem or occupational disability longer than 24 days, or one that "causes personal difficulty". An injury or health problem that "causes personal difficulty" is one that affects an "important organ", if it results in a "health disadvantage", if the "healing process is uncertain", or if it leads to the fear of "additional effects".

## Severity of injury unknown

The degree of severity is unknown if it is not possible for the responsible medical party or the doctor to determine the severity of the injury (this should be avoided when possible).

