



KURATORIUM
FÜR VERKEHRS
SICHERHEIT

**UNFALL
STATISTIK**

2003

English Version

**Road Traffic Accidents
in Austria**

Series: "Verkehr in Österreich"

Edition No. 36

ISSN 1026-3969

Series: "Verkehr in Österreich"

Edition No. 36

Statistics of Road Accidents 2003

Issued by

Austrian Safety and Prevention Board
Institute for Road Accident Statistics

in co-operation with

Bundesministerium für Inneres (BMI)

with friendly assistance of

Allgemeine Unfallversicherungsanstalt (AUVA)

Vienna, July 2004

Imprint

Publisher:
Austrian Safety and Prevention Board
Institute for Road Accident Statistics
A-1030 Wien, Ölzeltgasse 3
Phone: (+43 -1) 717 70 - 0
Fax: (+43 -1) 717 70 - 195
Data source: STATISTIK AUSTRIA
Editorial Staff : DI Stefan Höglinger, Michael Peleschka
Art Design: Mag. Jörg Gaisbauer

Vienna, July 2004

For further questions and feedback please contact
Austrian Safety and Prevention Board
Institute for Road Accident Statistics
Mr. DI Stefan Höglinger
A-1030 Wien, Ölzeltgasse 3
Phone: (+43 -1) 717 70 - 131; Email: stefan.hoeglinger@kfv.at
More information can be found on our homepage: <http://www.kfv.at>



Data are dry facts - but they gain shape and are vital information when they reflect the fate of humans. Traffic takes new victims with every passing year. Many people die on roads every year, most not being of fault: children that were not restrained properly in passenger vehicles, pedestrians hit by automobiles, young drivers that see the automobile as a sport machine with the dangerous goal of being a speedster, and the list goes on.

Safe roads can only be guaranteed with effective cooperation between humans, infrastructure and public authorities. In order to achieve a high level of safety, information about accidents must be collected and analysed so that safety measures can be evaluated.

An effective safety measure package exists in Austria with its Traffic Safety Programme 2002-2010. Its purpose is to fight against these negative developments. The programme contains sophisticated strategies for the minimisation of road dangers. Many measures have already been put into action and show success. We call upon more awareness in the general population with the goal to curb deaths on Austria's roads through consequential work for road safety and research in all traffic-related areas. Every step that helps save human lives is well worth the effort.

A handwritten signature in black ink, appearing to be 'O. Thann', written in a cursive style.

Dr. Othmar Thann
Director - Austrian Safety and Prevention Board

table of contents

Evolution	8
Overview 2003	8
Road accidents	11
Location of accident	15
Administrative districts	15
Participation of traffic	16
Pedestrians	20
Cyclists	23
Powered two-wheelers	24
Passenger cars	32
Lorries	36
Age Groups	37
Children and pupils	44
Seniors	48
Accident types and causes	50

contents

Special issues	52
Alcohol related accidents	52
Speed monitoring	56
Foreigners	57
International	58
Statistical parameters / Exposure Data	62
Demography	62
Substructures of traffic	65
International	66
Security precautions	67
Rail - Road	70
Publications	71
Glossary	73

evolution

ROAD ACCIDENTS 2003

Table: Summary of road accident data 2003

Criteria	Quantity
Accidents with damage only	-
Accidents with damage to persons	43.426
Casualties	57.812
Accidents with personal injuries, excluding fatalities	42.920
Injuries	56.881
Accidents with fatalities	848
Fatalities	931
Severely injured	7.984
Slightly injured	42.183
Severity of injury unknown	6.714

*) Recording of accidents with damage only ended on 01.01.1995

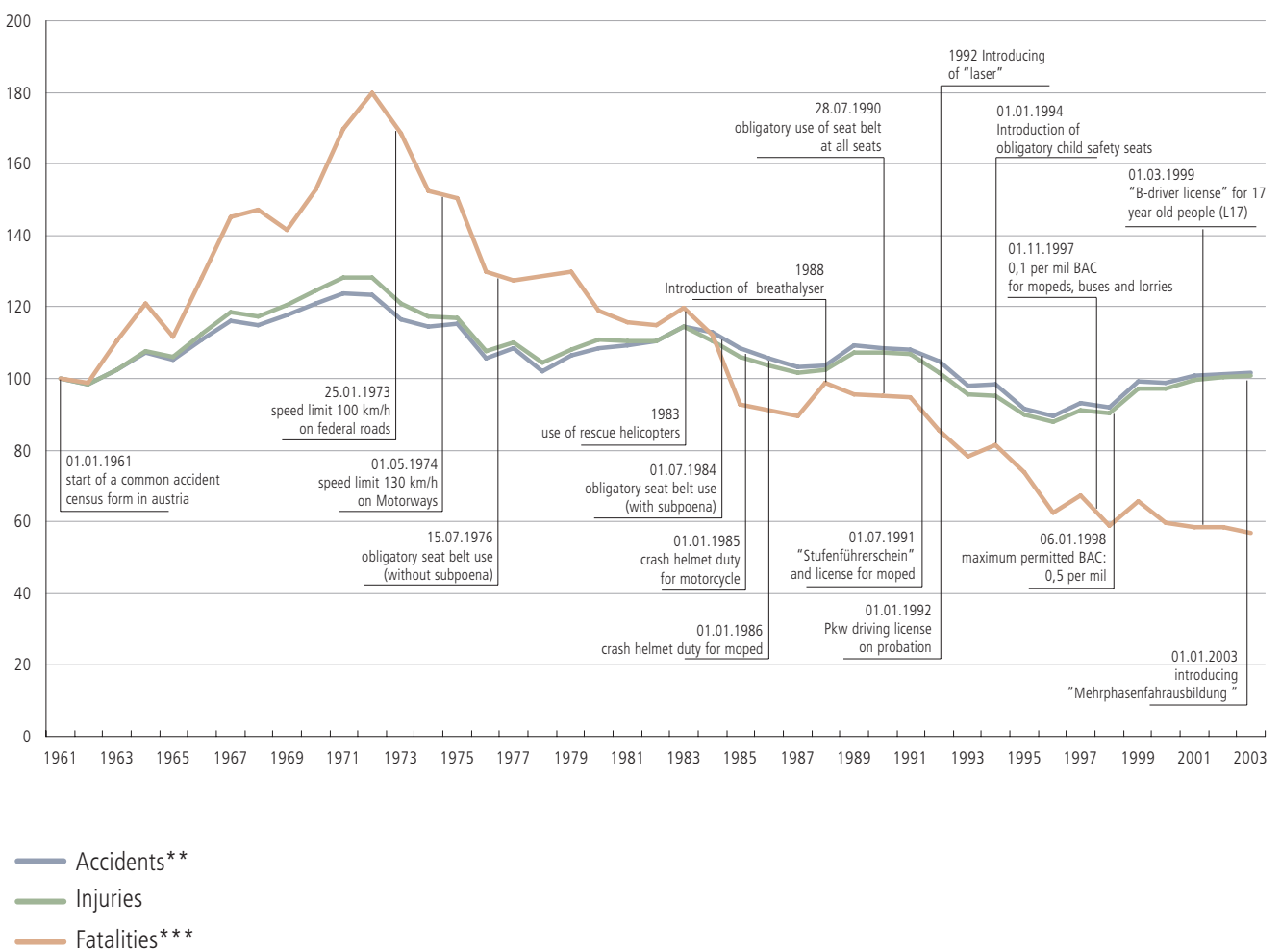
Table: Accidents and casualties 1961–2003

	Accidents*		Injuries		Fatalities**	
	Total	Change from previous year [%]	Total	Change from previous year [%]	Total	Change from previous year [%]
1961	42.653	-	56.491	-	1.640	-
1962	41.954	-1,6	55.533	-1,7	1.622	-1,1
1963	43.736	4,2	57.963	4,4	1.811	11,7
1964	45.784	4,7	60.720	4,8	1.983	9,5
1965	44.970	-1,8	59.987	-1,2	1.829	-7,8
1966	47.250	5,1	63.466	5,8	2.101	14,9
1967	49.539	4,8	66.988	5,5	2.380	13,3
1968	48.963	-1,2	66.335	-1,0	2.416	1,5
1969	50.189	2,5	68.135	2,7	2.320	-4,0
1970	51.631	2,9	70.415	3,3	2.507	8,1
1971	52.763	2,2	72.380	2,8	2.782	11,0
1972	52.696	-0,1	72.336	-0,1	2.948	6,0
1973	49.716	-5,7	68.382	-5,5	2.765	-6,2
1974	48.853	-1,7	66.207	-3,2	2.499	-9,6
1975	49.132	0,6	66.145	-0,1	2.467	-1,3
1976	45.016	-8,4	60.868	-8,0	2.131	-13,6
1977	46.183	2,6	62.266	2,3	2.091	-1,9
1978	43.592	-5,6	59.043	-5,2	2.112	1,0
1979	45.425	4,2	61.099	3,5	2.129	0,8
1980	46.214	1,7	62.625	2,5	1.951	-8,4
1981	46.690	1,0	62.518	-0,2	1.898	-2,7
1982	47.067	0,8	62.451	-0,1	1.883	-0,8
1983	48.825	3,7	64.784	3,7	1.967	4,5
1984	48.146	-1,4	62.362	-3,7	1.841	-6,4
1985	46.275	-3,9	59.977	-3,8	1.524	-17,2
1986	45.015	-2,7	58.448	-2,5	1.495	-1,9
1987	43.947	-2,4	57.352	-1,9	1.469	-1,7
1988	44.243	0,7	57.843	0,9	1.620	10,3
1989	46.565	5,2	60.623	4,8	1.570	-3,1
1990	46.338	-0,5	60.650	0,0	1.558	-0,8
1991	46.013	-0,7	60.355	-0,5	1.551	-0,4
1992	44.730	-2,8	57.473	-4,8	1.403	-9,5
1993	41.791	-6,6	53.987	-6,1	1.283	-8,6
1994	42.015	0,5	53.818	-0,3	1.338	4,3
1995	38.956	-7,3	50.764	-5,7	1.210	-9,6
1996	38.253	-1,8	49.673	-2,1	1.027	-15,1
1997	39.659	3,7	51.591	3,9	1.105	7,6
1998	39.225	-1,1	51.077	-1,0	963	-12,9
1999	42.348	8,0	54.967	7,6	1.079	12,0
2000	42.126	-0,5	54.929	-0,1	976	-9,5
2001	43.073	2,2	56.265	2,4	958	-1,8
2002	43.175	0,2	56.684	0,7	956	-0,2
2003	43.426	0,6	56.881	0,3	931	-2,6

*) Accidents with damage to persons

**) 30 days time limit corrections for fatalities in the years from 1966-1991, has been considered with +12%.

Safety measures and evolution of accident rates 1961–2003*



*) Index: 1961: 100%

**) Accidents with damage to persons

**) 30 days time limit corrections for Fatalities in the years from 1966-1991 has been considered with +12%.

Casualties 1980 - 2003*

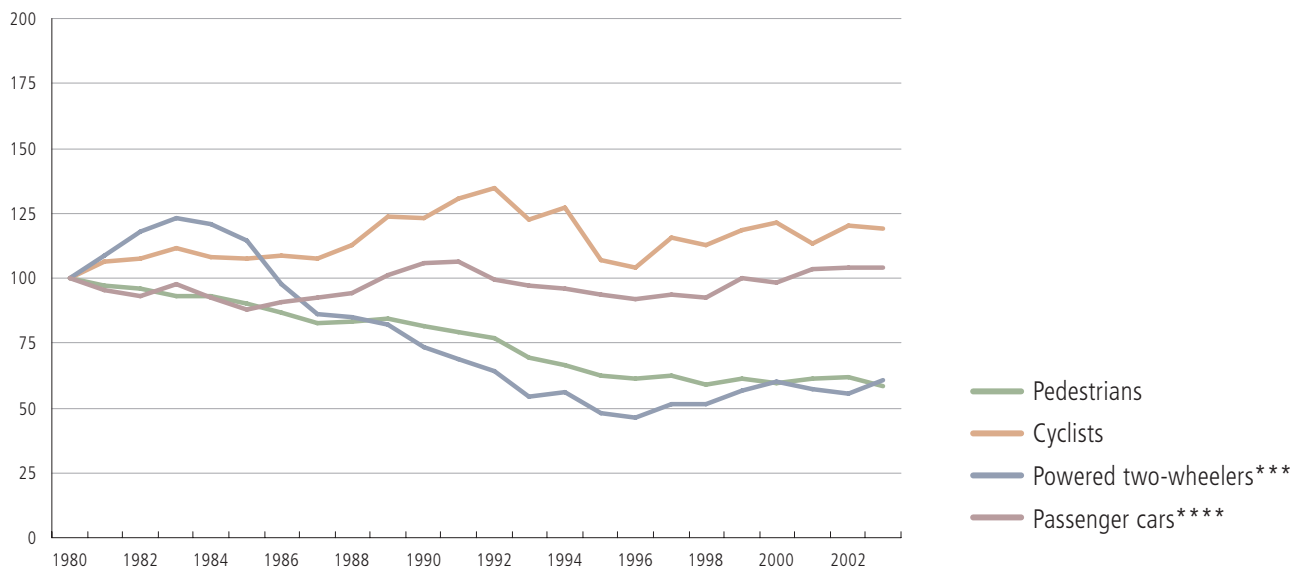


Table: Casualties 1980 - 2003

Year	Total		Pedestrians		Cyclists		Powered two-wheeler***		In passenger car****		Others	
	injuries**	fatalities**	injuries	fatalities**	injuries	fatalities**	injuries	fatalities**	injuries	fatalities**	injuries	fatalities**
1980	62.625	1.951	7.081	447	4.838	84	13.926	308	33.802	1.038	2.978	74
1981	62.518	1.898	6.947	360	5.110	114	15.109	340	32.286	997	3.066	87
1982	62.451	1.883	6.873	355	5.164	125	16.482	311	31.320	1.010	2.612	81
1983	64.784	1.967	6.566	419	5.409	94	17.220	328	33.010	1.025	2.579	101
1984	62.362	1.814	6.657	355	5.228	95	16.871	347	31.271	925	2.335	92
1985	59.977	1.524	6.482	314	5.179	99	15.986	283	29.847	763	2.483	66
1986	58.448	1.495	6.236	286	5.238	101	13.661	243	30.808	802	2.505	64
1987	57.352	1.469	5.964	246	5.210	86	12.019	241	31.482	833	2.677	63
1988	57.843	1.620	5.965	292	5.440	102	11.851	230	31.896	926	2.691	69
1989	60.623	1.570	6.051	292	5.994	86	11.456	246	34.393	865	2.729	81
1990	60.650	1.558	5.863	260	5.950	106	10.233	200	35.899	913	2.705	78
1991	60.355	1.551	5.684	260	6.351	93	9.548	205	36.060	913	2.712	81
1992	57.473	1.403	5.559	240	6.541	93	9.005	164	33.862	853	2.506	53
1993	53.987	1.283	5.005	202	5.943	102	7.526	173	33.132	747	2.381	59
1994	53.818	1.338	4.784	225	6.197	75	7.841	159	32.540	807	2.453	72
1995	50.764	1.210	4.491	200	5.184	77	6.638	152	31.968	708	2.483	73
1996	49.673	1.027	4.457	157	5.045	73	6.418	130	31.461	625	2.292	42
1997	51.591	1.105	4.542	156	5.614	66	7.116	168	31.861	667	2.458	48
1998	51.077	963	4.256	165	5.505	57	7.177	120	31.679	565	2.460	56
1999	54.967	1.079	4.427	182	5.756	68	7.904	151	34.156	614	2.724	64
2000	54.929	976	4.338	140	5.912	62	8.376	156	33.594	549	2.709	69
2001	56.265	958	4.494	117	5.509	55	8.014	144	35.470	570	2.778	72
2002	56.684	956	4.512	160	5.837	80	7.782	135	35.762	524	2.791	57
2003	56.881	931	4.253	132	5.804	56	8.517	156	35.720	524	2.587	63

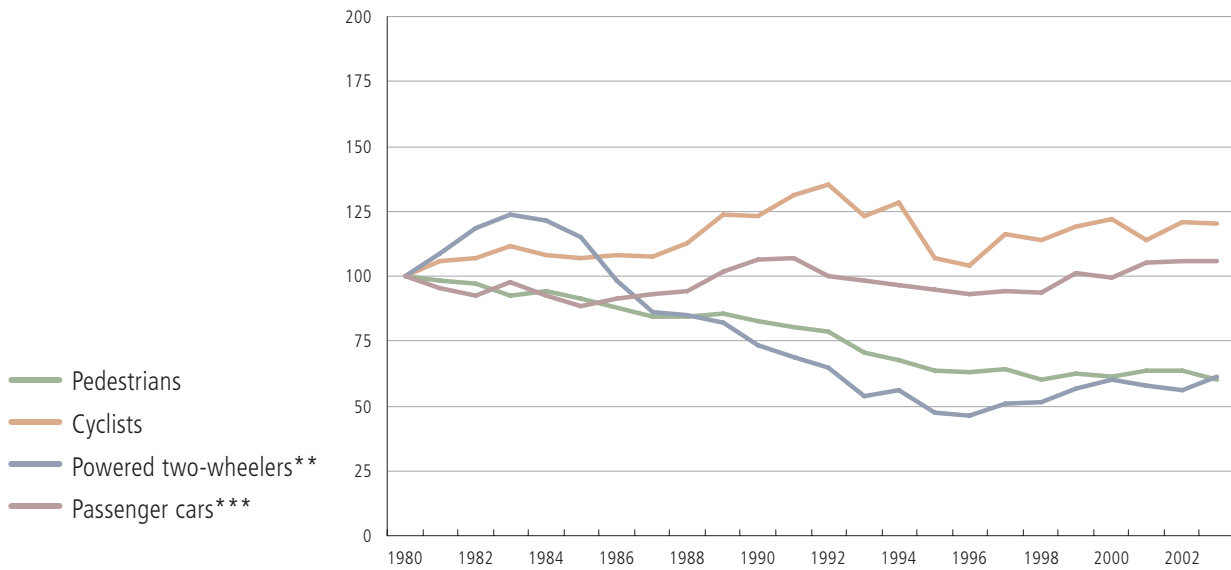
*) Index: 1980: 100%

**) 30 days time limit corrections for Fatalities in the years from 1966-1991 has been considered with +12%.

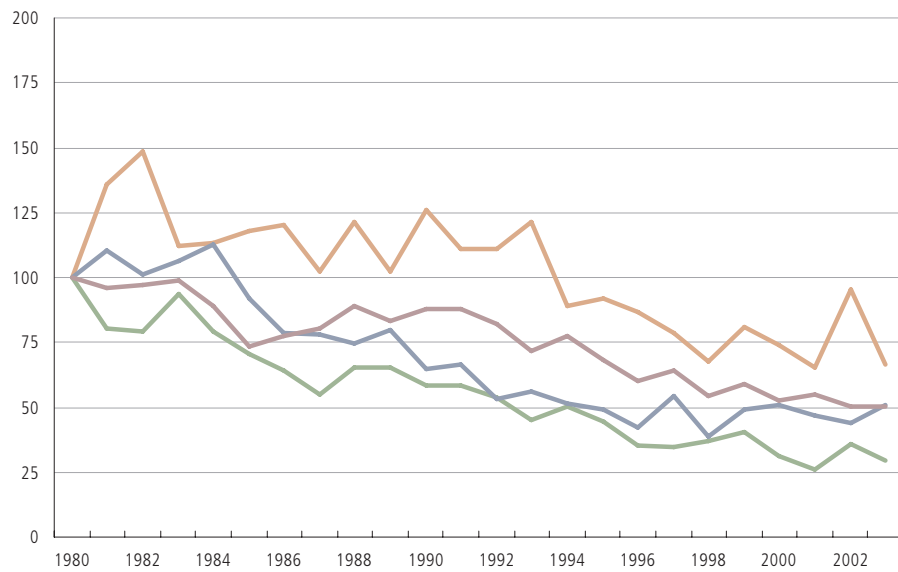
**) Including Mopeds, Mofas, Kleinmotorräder, Motorräder, Motorräder mit Beiwagen, Motordreiräder, since 1992 Leichtmotorräder

****) Including Passenger cars with trailer, station wagon and taxi

Injuries 1980 - 2003*



Fatalities 1980 - 2003*



*) Index: 1980: 100%
 **) Including Mopeds, Mofas, Kleinmotorräder, Motorräder, Motorräder mit Beiwagen, Motordreiräder, since 1992 Leichtmotorräder
 ***) Including Passenger cars with trailer, station wagon and taxi

Road accidents, injuries and fatalities 2001–2003

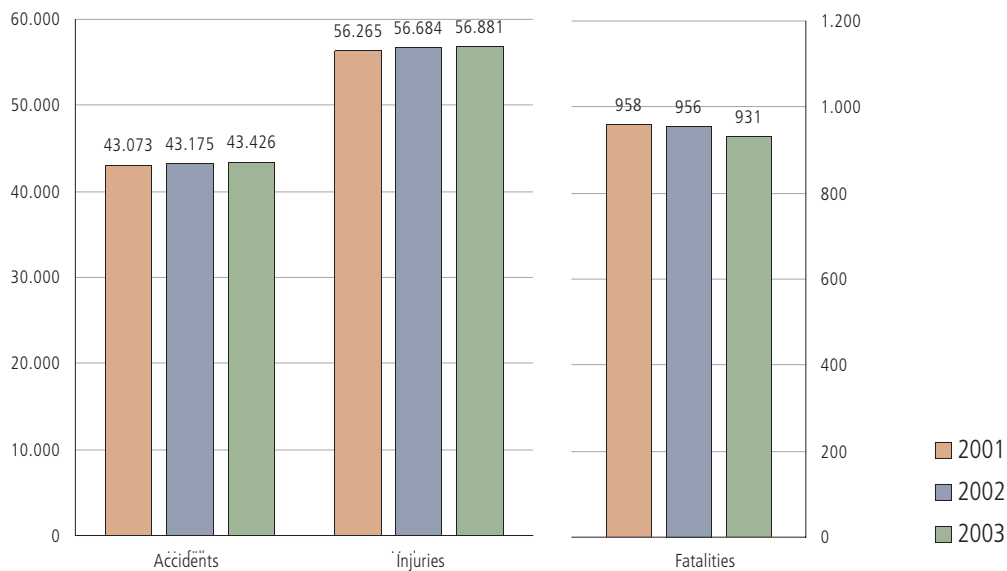


Table: Accidents, injuries and fatalities by federal state 2001–2003

	Accidents			Injuries			Fatalities		
	2001	2002	2003	2001	2002	2003	2001	2002	2003
BGLD	952	994	982	1.264	1.385	1.336	52	37	52
KTN	3.242	3.283	3.344	4.122	4.184	4.271	62	83	59
NÖ	7.728	7.787	7.638	10.262	10.342	10.210	261	261	277
OÖ	9.423	9.076	9.238	12.562	12.300	12.448	167	176	174
SBG	3.028	2.903	3.044	3.937	3.836	3.921	66	58	60
STMK	7.428	7.557	7.552	9.583	9.719	9.714	161	163	183
TIROL	4.572	4.455	4.474	6.021	5.870	5.905	115	100	64
VBG	1.683	1.838	1.792	2.132	2.336	2.259	33	33	17
WIEN	5.017	5.282	5.362	6.382	6.712	6.817	41	45	45
AUSTRIA	43.073	43.175	43.426	56.265	56.684	56.881	958	956	931

Table: Selected figures 2001 - 2003

	2001	2002	2003
Accidents	43.073	43.175	43.426
Injuries	56.265	56.684	56.881
Fatalities	958	956	931
ACCIDENTS WITH CHILDREN*	3.629	3.749	3.749
Children injuries	3.964	4.023	4.074
Children fatalities	26	25	37
ACCIDENTS WITH ACTIVE INVOLVED CHILDREN	2.090	2.132	2.086
Children injuries	2.018	2.029	1.990
Children fatalities	7	9	15
ACCIDENTS ON THE WAY**	528	499	507
Pupil injuries	564	518	556
Pupil fatalities	2	3	2
ACCIDENTS WITH YOUTH***	19.216	19.031	19.234
Youth injuries	17.400	17.566	17.645
Youth fatalities	220	215	215
ACCIDENTS WITH SENIORS****	5.378	5.658	5.766
Senior injuries (as pedestrians or driver)	3.344	3.414	3.489
Senior fatalities (as pedestrians or driver)	143	186	172
Accidents with pedestrians	4.559	4.650	4.371
Pedestrian injuries	4.494	4.512	4.253
Pedestrian fatalities	117	160	132
ACCIDENTS WITH POWERED TWO-WHEELERS (DRIVER OR PASSENGER)			
Cyclist injuries	5.509	5.837	5.804
Cyclist fatalities	55	80	56
Injuries Moped	4.450	4.392	4.732
Fatalities Moped	36	45	47
Injuries Kleinmotorrad	27	42	41
Fatalities Kleinmotorrad	1	1	0
Injuries Leichtmotorrad	254	336	207
Fatalities Leichtmotorrad	3	7	3
Injuries Motorrad	3.310	3.012	3.537
Fatalities Motorrad	104	82	106
ACCIDENTS BY ALCOHOL*****			
Alcohol related accidents	2.559	2.736	2.841
Alcoholised participants	2.643	2.842	2.962
Injuries	3.517	3.901	4.020
Fatalities	69	92	84

*) Children: 0–14 Jahre

**) Pupil: 6–15 years

***) youth 15–24 years

****) Seniors: 65 years and older

*****) Since 6. 1. 1998 there is a new BAC limit (0,5-per mil)

Location

Accidents per 10.000 inhabitants

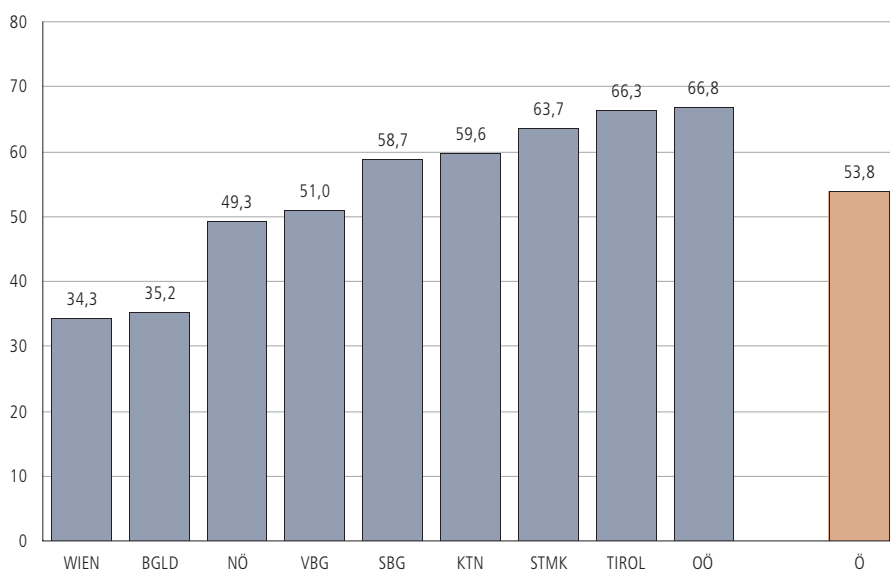
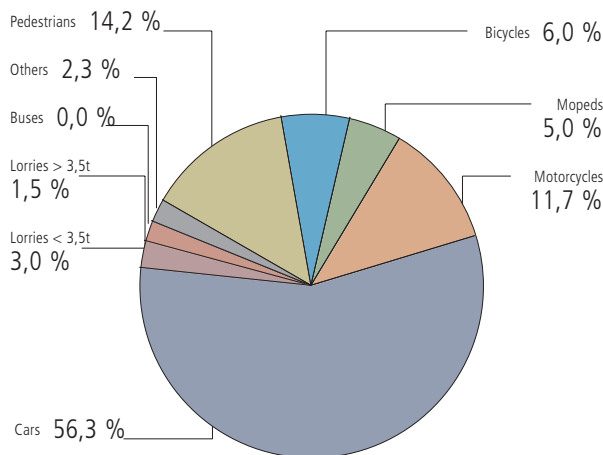


Table: Accidents and casualties by federal state

	Inhabitants	Accidents	Injuries	Fatalities	Accidents[%]	Injuries[%]	Fatalities[%]
BGLD	278.600	982	1.336	52	2,3	2,3	5,6
KTN	561.126	3.344	4.271	59	7,7	7,5	6,3
NÖ	1.549.658	7.638	10.210	277	17,6	17,9	29,8
OÖ	1.381.993	9.238	12.448	174	21,3	21,9	18,7
SBG	518.587	3.044	3.921	60	7,0	6,9	6,4
STMK	1.186.379	7.552	9.714	183	17,4	17,1	19,7
TIROL	675.070	4.474	5.905	64	10,3	10,4	6,9
VBG	351.570	1.792	2.259	17	4,1	4,0	1,8
WIEN	1.562.482	5.362	6.817	45	12,3	12,0	4,8
AUSTRIA	8.065.465	43.426	56.881	931	100,0	100,0	100,0

participation at traffic

Fraction of fatalities by participation



Fraction of injuries by participation

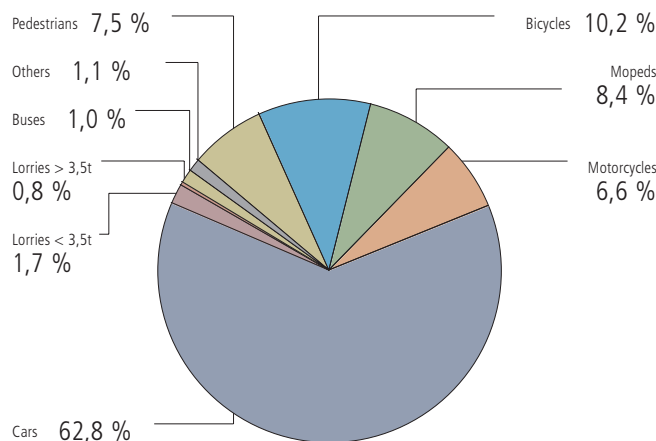


Table: Accidents, involved vehicles or pedestrians, injuries and fatalities by participation

	Accidents	Involved vehicles or pedestrians	Fatalities		Injuries		
			Drivers or Pedestrians	Passengers	Drivers or Pedestrians	Passengers	Total
Pedestrians			4.371	4.570	132	0	132
Game and sports equipment			138	141	2	0	2
Bicycle			5.899	6.392	56	0	56
Moped (Motorfahrrad)			4.452	4.541	43	4	47
Kleinmotorrad			37	37	0	0	0
Leichtmotorrad			203	203	3	0	3
Motorrad			3.417	3.566	100	6	106
Passenger car (including station wagon taxi)			36.068	55.140	370	152	522
Passenger car with trailer			133	134	1	1	2
Public transit bus (Obus)			408	415	0	0	0
Omnibus			330	333	0	0	0
Tramway			318	322	1	0	1
Railway			84	85	0	0	0
Lorry < 3,5t without trailer			2.214	2.288	23	5	28
Lorry < 3,5t with trailer			91	93	0	0	0
Lorry > 3,5t without trailer			1.064	1.107	4	0	4
Lorry < 3,5t with trailer			455	469	2	3	5
Tractor trailer			680	715	4	1	5
Tank lorry without trailer			15	15	0	0	0
Tank lorry with trailer, Tank tractor train			32	32	0	0	0
Motor tractor, Work machine without trailer			241	242	5	1	6
Motor tractor, Work machine with trailer			224	224	3	1	4
Emergency vehicles			100	102	0	1	1
Others			310	311	7	0	7
Total			43.426	-	756	175	931

Fraction of fatalities and severe injuries by number of casualties

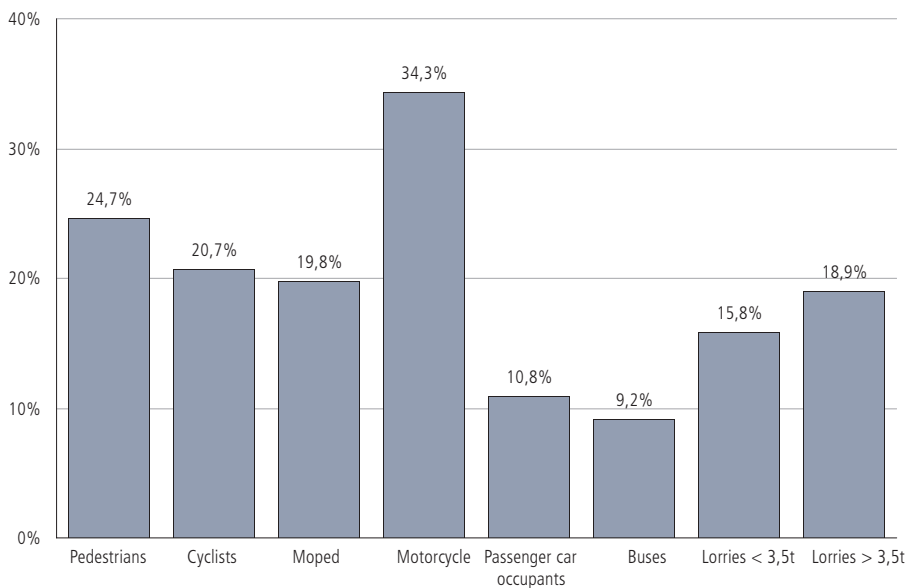


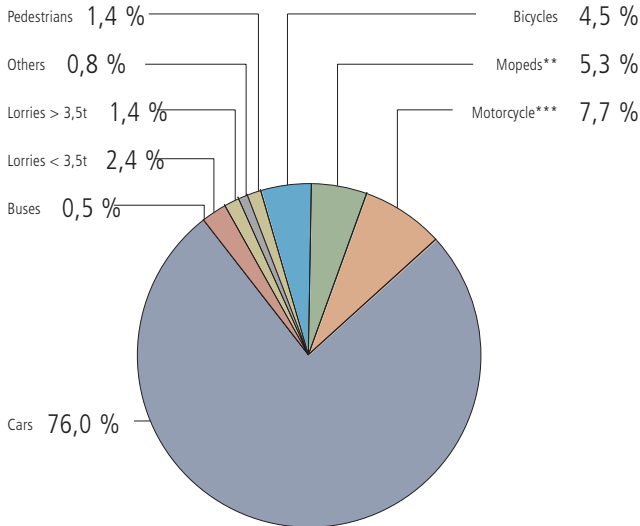
Table: Severity of injuries by participation

	Pedestrians	Cyclists	Mopeds*	Motorcycles**	Car Passengers	Buses	Lorries <3,5t	Lorries >3,5t	Others	Total
Fatalities	132	56	47	109	524	0	28	14	21	931
Severe injuries	949	1.156	905	1.212	3.402	54	126	71	109	7.984
Severity of injuries unknown	396	668	458	527	4.352	44	118	83	68	6.714
Slight injuries	2.908	3.980	3.410	2.005	27.966	491	703	281	439	42.183
Injuries total	4.253	5.804	4.773	3.744	35.720	589	947	435	616	56.881
Casualties	4.385	5.860	4.820	3.853	36.244	589	975	449	637	57.812
Non injuries	185	569	314	282	30.259	702	1.651	1.964	898	36.824

*) including Kleinmotorrad

**) including Leichtmotorrad

Injuries: outside urban area



Injuries: inside urban area

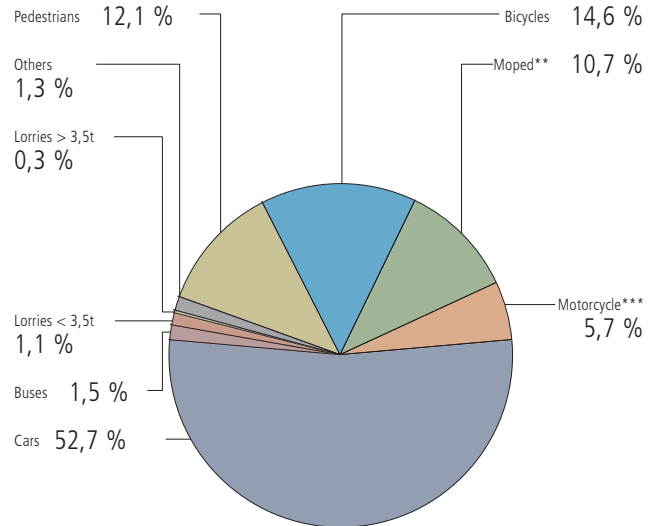
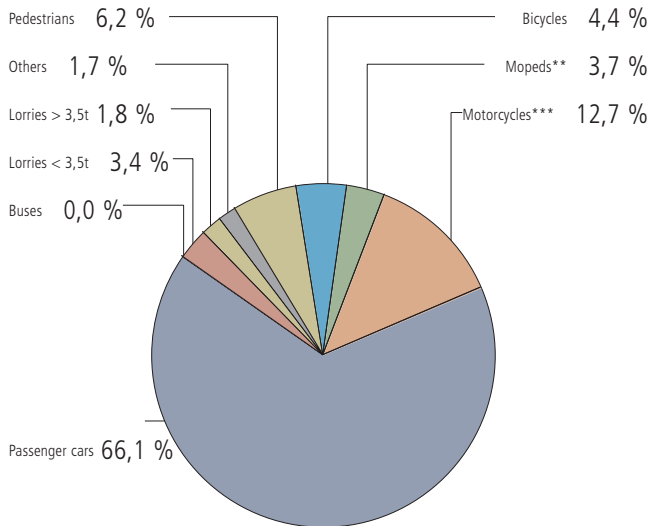


Table: Number of injuries by location and participation

	Injuries		Total
	Inside urban area	Outside urban area	
Pedestrians	3.914	339	4.253
Bicycles	4.703	1.101	5.804
Moped**	3.469	1.304	4.773
Motorcycle***	1.842	1.902	3.744
Passenger cars	17.025	18.695	35.720
Buses	475	114	589
Lorries < 3,5t	367	580	947
Lorries > 3,5t	85	350	435
Others	413	203	616
Total	32.293	24.588	56.881

***) including Leichtmotorrad
**) including Kleinmotorrad

Fatalities: outside urban area



Fatalities: inside urban area

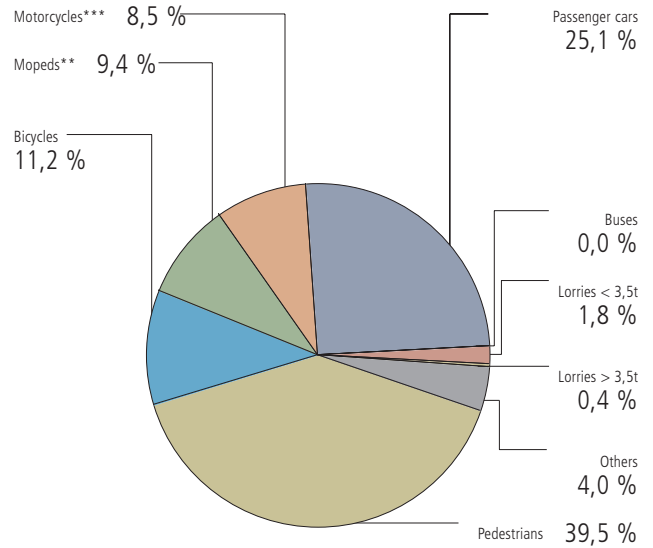


Table: Number of fatalities by location and participation

	Fatalities		Total
	Inside urban area	Outside urban area	
Pedestrians	88	44	132
Bicycles	25	31	56
Moped**	21	26	47
Motorcycle***	19	90	109
Passenger cars	56	468	524
Buses	0	0	0
Lorries < 3,5t	4	24	28
Lorries > 3,5t	1	13	14
Others	9	12	21
Total	223	708	931

**) including Kleinmotorrad

***) including Leichtmotorrad

Pedestrians - overview

Table: Road accidents involving pedestrians

	1999	2000	2001	2002	2003
Accidents	4.569	4.449	4.559	4.650	4.371
Fatalities	182	140	117	160	132
Injuries	4.426	4.338	4.494	4.512	4.253

Table: Accidents with pedestrians by federal state - injuries and killed pedestrians

	Pedestrian accidents			Fraction per total accidents [%]		
	Accidents	Injuries	Fatalities	Accidents	Injuries	Fatalities
BGLD	67	64	6	6,8	4,8	11,5
KTN	281	273	11	8,4	6,4	18,6
NÖ	565	542	29	7,4	5,3	10,5
OÖ	732	702	26	7,9	5,6	14,9
SBG	311	305	4	10,2	7,8	6,7
STMK	549	516	21	7,3	5,3	11,5
TIROL	453	451	7	10,1	7,6	10,9
VBG	182	179	4	10,2	7,9	23,5
WIEN	1.231	1.221	24	23,0	17,9	53,3
AUSTRIA	4.371	4.253	132	10,1	7,5	14,2

Injured pedestrians by age and sex

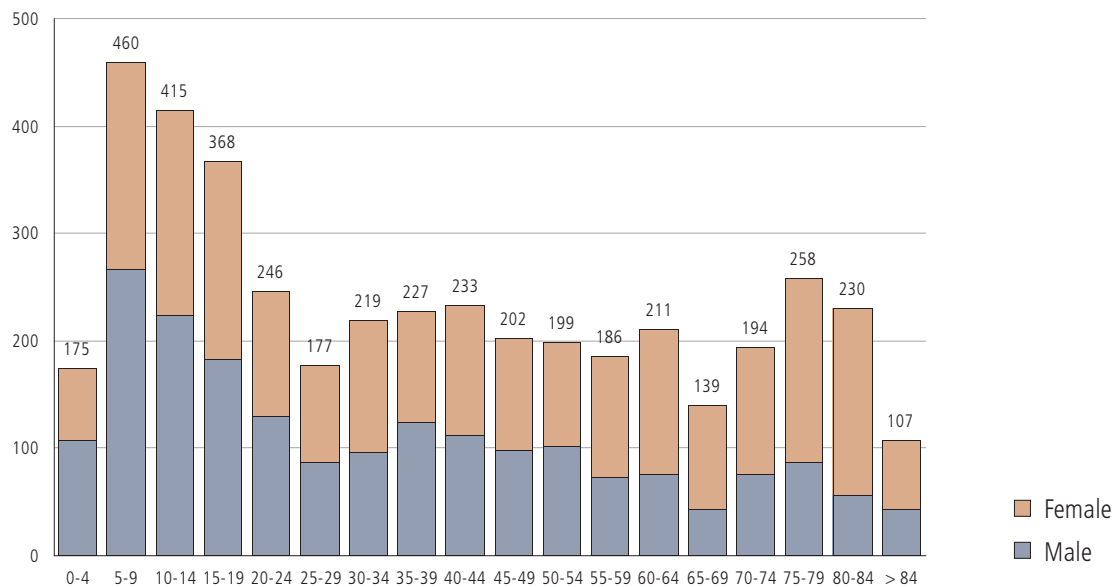


Table: Injured pedestrians by age and sex

Injured pedestrians			
Age	Male	Female	Total
0-4	107	68	175
5-9	267	193	460
10-14	224	191	415
15-19	183	185	368
20-24	130	116	246
25-29	86	91	177
30-34	96	123	219
35-39	125	102	227
40-44	112	121	233
45-49	98	104	202
50-54	102	97	199
55-59	73	113	186
60-64	75	136	211
65-69	43	96	139
70-74	75	119	194
75-79	87	171	258
80-84	56	174	230
> 84	43	64	107
Unknown	5	2	7
Total	1.987	2.266	4.253

Pedestrian fatalities by age and sex

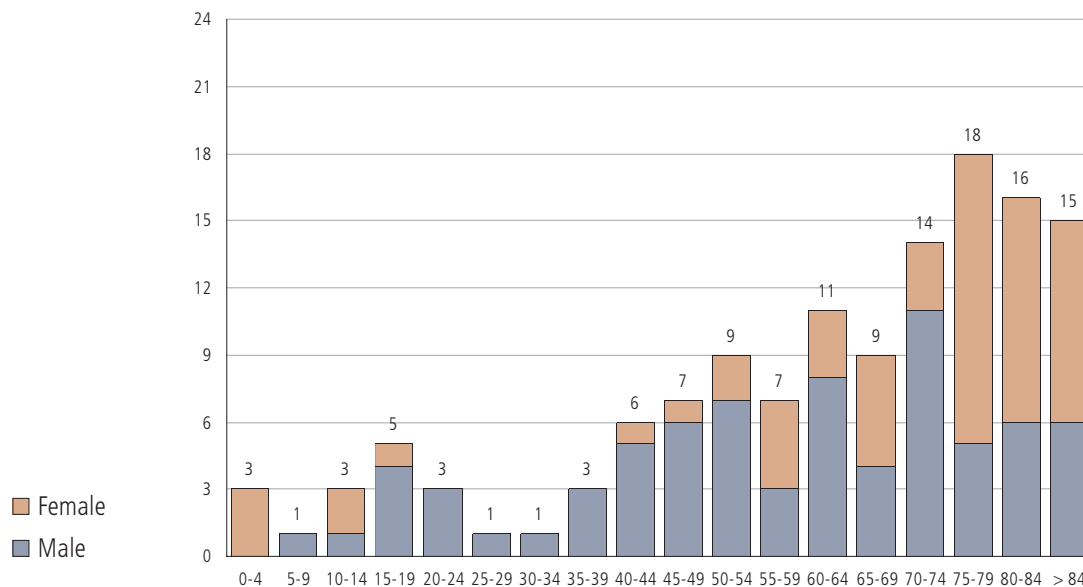


Table: Pedestrian fatalities by age and sex

Age	Killed pedestrians		
	Male	Female	Total
0-4	0	3	3
5-9	1	0	1
10-14	1	2	3
15-19	4	1	5
20-24	3	0	3
25-29	1	0	1
30-34	1	0	1
35-39	3	0	3
40-44	5	1	6
45-49	6	1	7
50-54	7	2	9
55-59	3	4	7
60-64	8	3	11
65-69	4	5	9
70-74	11	3	14
75-79	5	13	18
80-84	6	10	16
> 84	6	9	15
Unknown	0	0	0
Total	75	57	132

Cyclists-overview

Table: Accidents involving cyclists

	1999	2000	2001	2002	2003
Accidents	5.828	5.968	5.626	5.930	5.899
Fatalities	68	62	55	80	56
Injuries	5.757	5.912	5.509	5.837	5.804

Table: Accidents involving cyclists by federal state

	Accidents involving cyclists			Ratio total accidents [%]		
	Accidents	Injuries	Fatalities	Accidents	Injuries	Fatalities
BGLD	111	117	2	11,3	8,8	3,8
KTN	579	576	5	17,3	13,5	8,5
NÖ	698	669	19	9,1	6,6	6,9
OÖ	1.197	1.176	17	13,0	9,4	9,8
SBG	537	534	3	17,6	13,6	5,0
STMK	957	928	8	12,7	9,6	4,4
TIROL	747	753	1	16,7	12,8	1,6
VBG	410	413	1	22,9	18,3	5,9
WIEN	663	638	0	12,4	9,4	0,0
AUSTRIA	5.899	5.804	56	13,6	10,2	6,0

Number of injured cyclists by age and sex

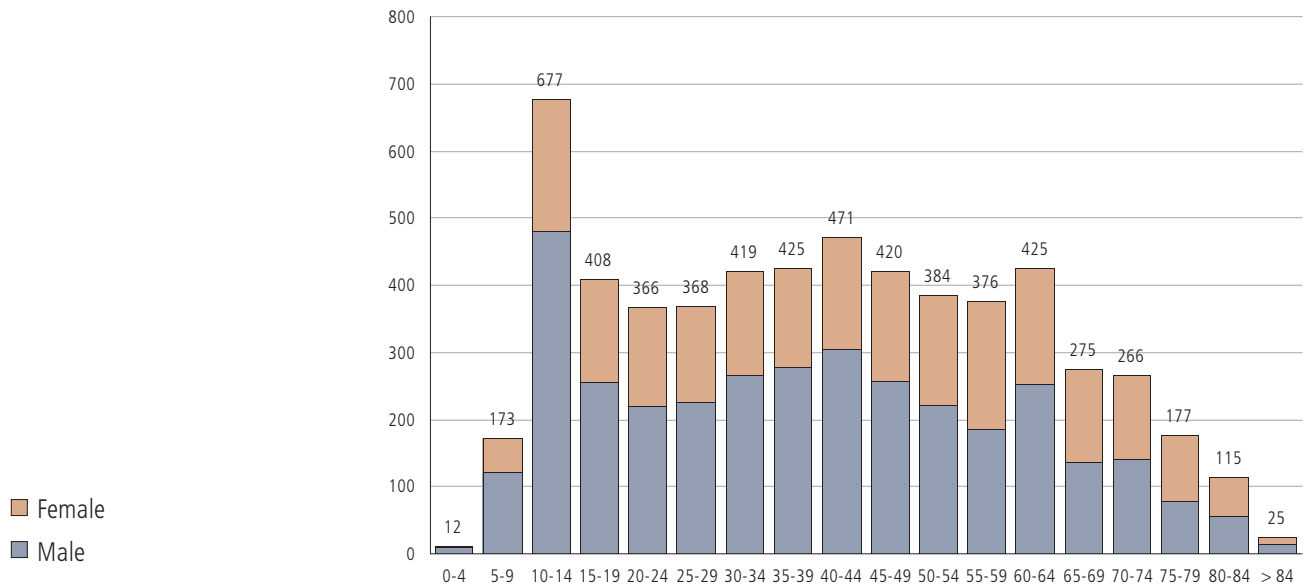


Table: Injured cyclists by age and sex

Age	Injured Cyclists		
	Male	Female	Total
0-4	9	3	12
5-9	120	53	173
10-14	480	197	677
15-19	255	153	408
20-24	219	147	366
25-29	225	143	368
30-34	265	154	419
35-39	278	147	425
40-44	305	166	471
45-49	257	163	420
50-54	222	162	384
55-59	186	190	376
60-64	253	172	425
65-69	137	138	275
70-74	141	125	266
75-79	78	99	177
80-84	56	59	115
> 84	14	11	25
Unknown	17	5	22
Total	3.517	2.287	5.804

Number of cyclist fatalities by age and sex

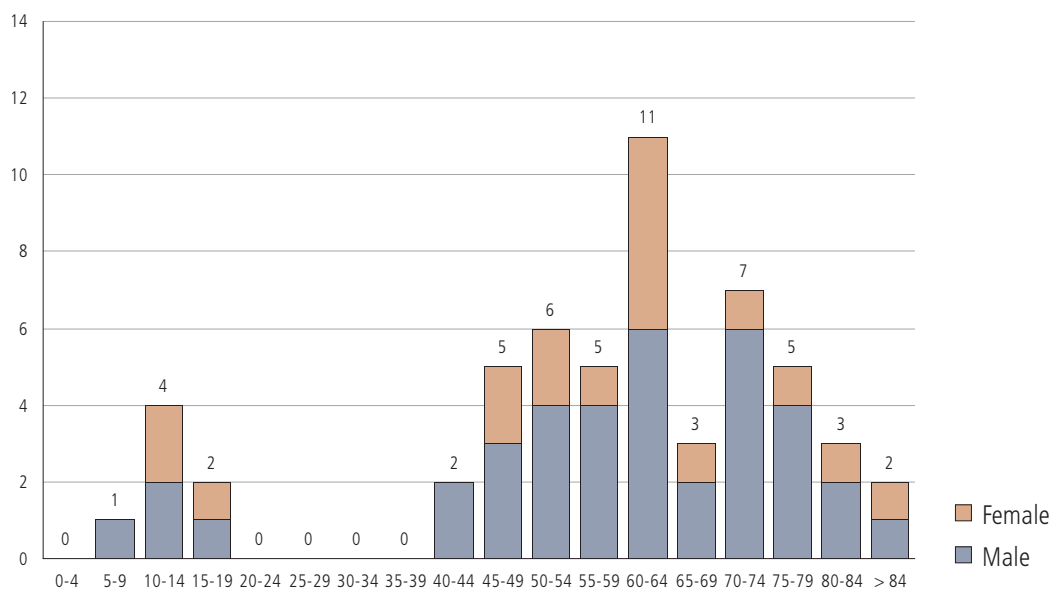



Table: Cyclist fatalities by age and sex

Age	Cyclist fatalities		
	Male	Female	Total
0-4	0	0	0
5-9	1	0	1
10-14	2	2	4
15-19	1	1	2
20-24	0	0	0
25-29	0	0	0
30-34	0	0	0
35-39	0	0	0
40-44	2	0	2
45-49	3	2	5
50-54	4	2	6
55-59	4	1	5
60-64	6	5	11
65-69	2	1	3
70-74	6	1	7
75-79	4	1	5
80-84	2	1	3
> 84	1	1	2
Unknowmt	0	0	0
Total	38	18	56

Powered two-wheelers* – overview

Table: Accidents involving powered two-wheelers



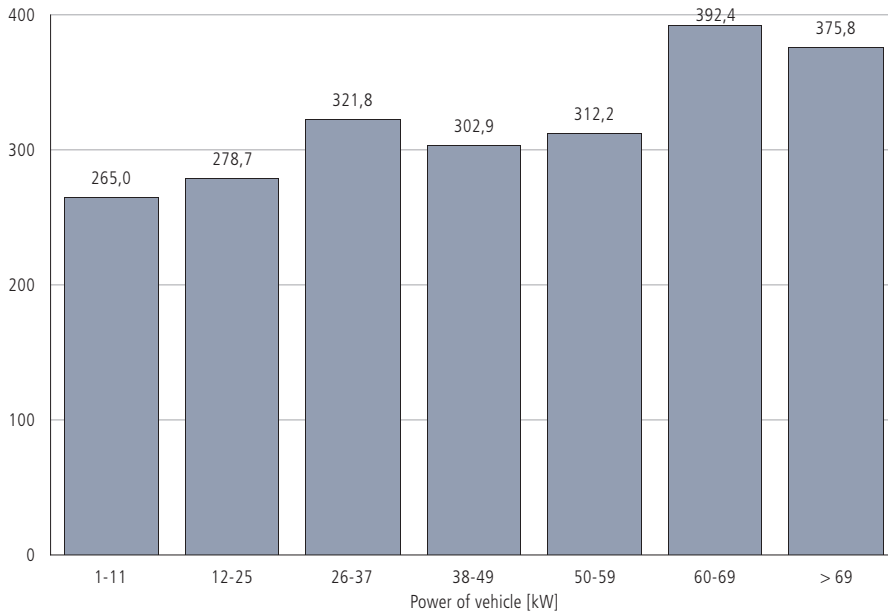
	1999	2000	2001	2002	2003
Mopeds including Kleinmotorräder					
Accidents	4.210	4.455	4.193	4.199	4.489
Fatalities	48	44	37	46	47
Injuries	4.469	4.723	4.477	4.434	4.773
Motorräder including Leichtmotorräder					
Accidents	3.308	3.458	3.444	3.239	3.617
Fatalities	103	112	107	89	109
Injuries	3.435	3.653	3.564	3.348	3.744

Table: Killed and severely injured motorcycle drivers** by vehicle power

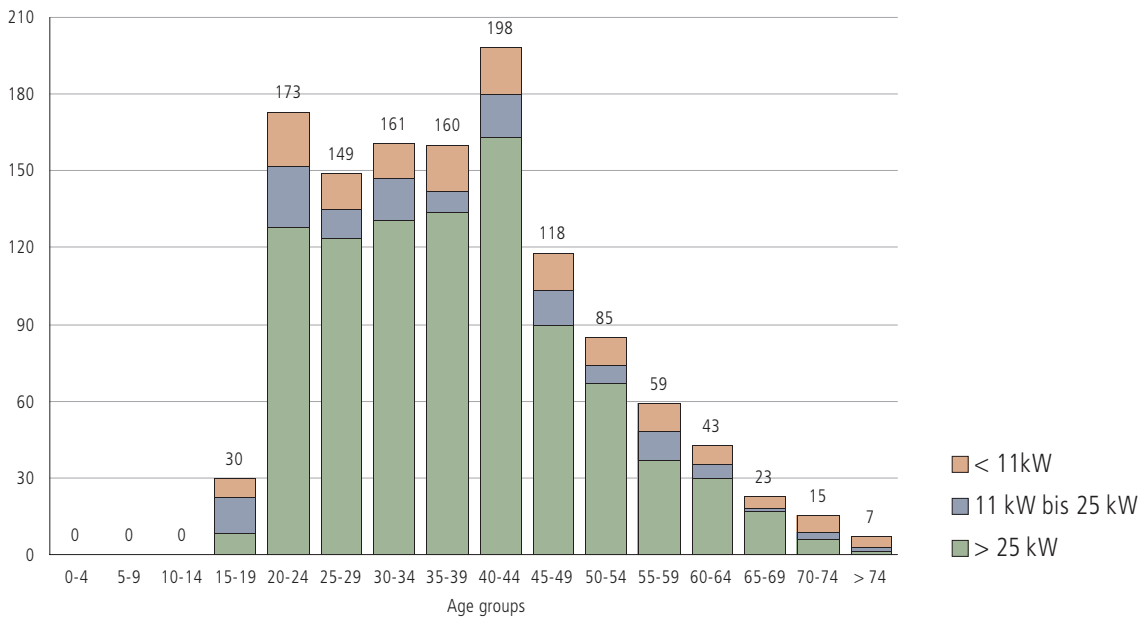
Motorpower [kW]	Driver of motorcycle			Per 1.000 participants
	Participants	Fatalities	Severely injured	Fatalities und severe injuries
1-11	317	4	80	265,0
12-25	427	5	114	278,7
26-37	550	10	167	321,8
38-49	416	4	122	302,9
50-59	362	13	100	312,2
60-69	316	11	113	392,4
> 69	1.059	54	344	375,8
Unknown :	322	2	80	254,7
Total	3.769	103	1.120	324,5

*) Mopeds, Kleinmotorräder, Motorräder and Leichtmotorräder
**) including Leichtmotorradlenker

Motorcycle fatalities or severe injuries* by vehicle power per 1.000 motorcyclists involved in accidents

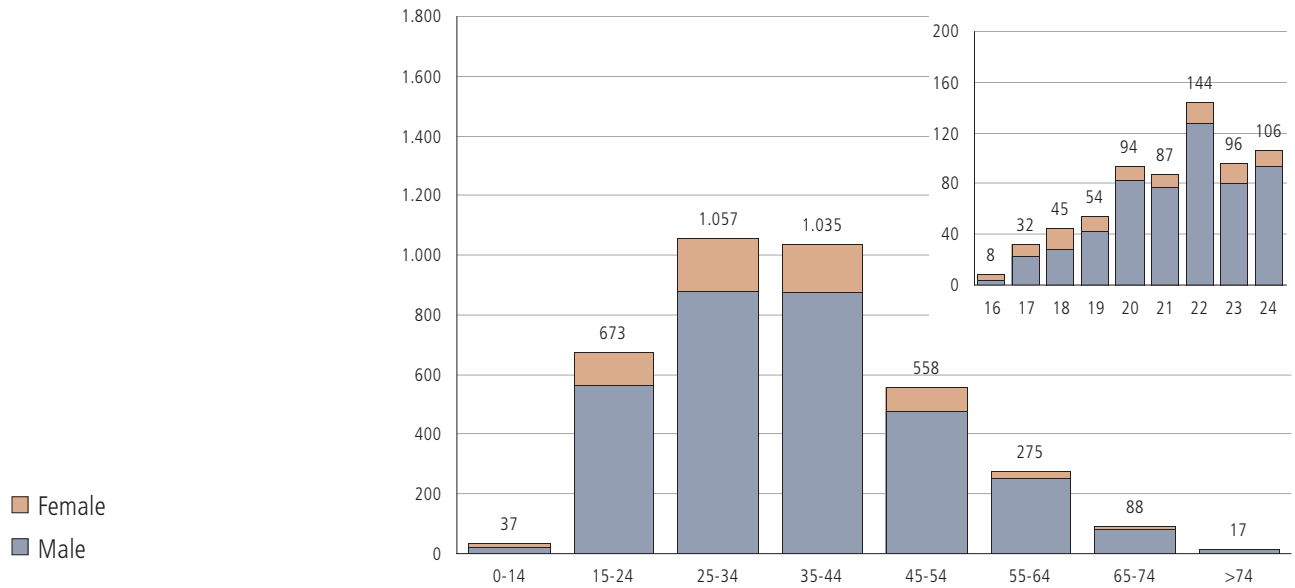


Motorcycle fatalities or severe injuries* by vehicle power and age of driver



*) including Leichtmotorradlenker

Injured motorcyclists by age and sex



Female
Male

PARTICIPATION AT TRAFFIC

Table: Injured motorcyclists by age and sex

Age	Injuries					
	Male		Female		Total	
	Drivers	Passengers	Drivers	Passengers	Drivers	Passengers
0-14	2	20	0	15	2	35
15-19	87	13	19	27	106	40
20-24	450	12	29	36	479	48
25-29	419	4	52	46	471	50
30-34	455	3	47	31	502	34
35-39	437	0	46	35	483	35
40-44	435	1	44	37	479	38
45-49	271	1	21	34	292	35
50-54	203	2	6	20	209	22
55-59	145	0	2	8	147	8
60-64	106	1	2	11	108	12
65-69	53	0	2	1	55	1
70-74	29	0	2	1	31	1
> 74	16	0	1	0	17	0
Unknown	4	0	0	0	5	0
Total	3.112	57	273	302	3.385	359

Motorcycle fatalities by age and sex

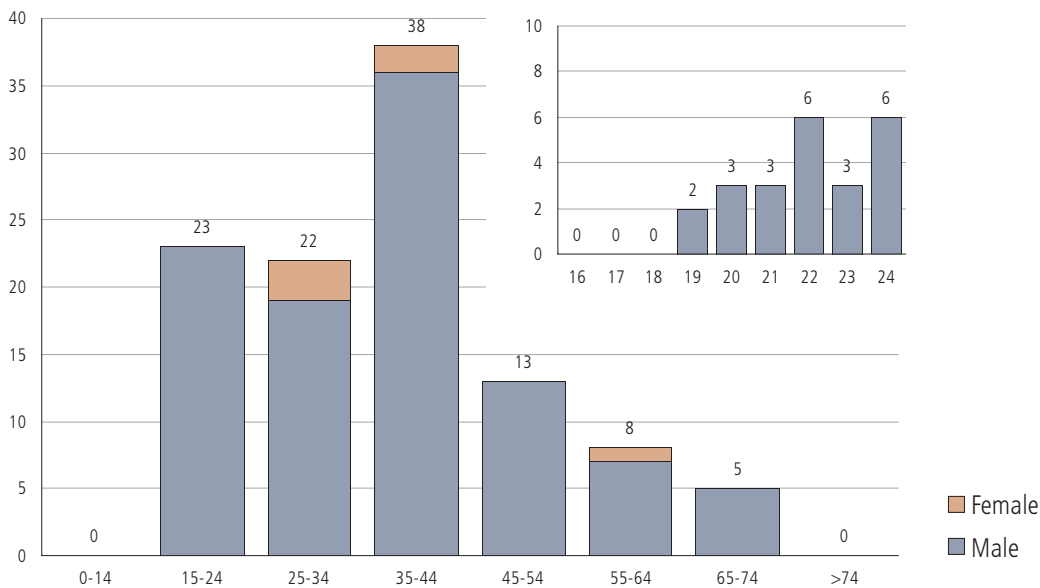


Table: Motorcycle fatalities by age and sex

Age	Fatalities					
	Male		Female		Total	
	Drivers	Passengers	Drivers	Passengers	Drivers	Passengers
0-14	0	0	0	0	0	0
15-19	2	0	0	0	2	0
20-24	21	0	0	0	21	0
25-29	13	1	0	2	13	3
30-34	5	0	0	1	5	1
35-39	15	0	0	1	15	1
40-44	21	0	1	0	22	0
45-49	9	0	0	0	9	0
50-54	4	0	0	0	4	0
55-59	4	0	0	1	4	1
60-64	3	0	0	0	3	0
65-69	4	0	0	0	4	0
70-74	1	0	0	0	1	0
> 74	0	0	0	0	0	0
Unknown	0	0	0	0	0	0
Total	102	1	1	5	103	6

Moped injuries by age and sex

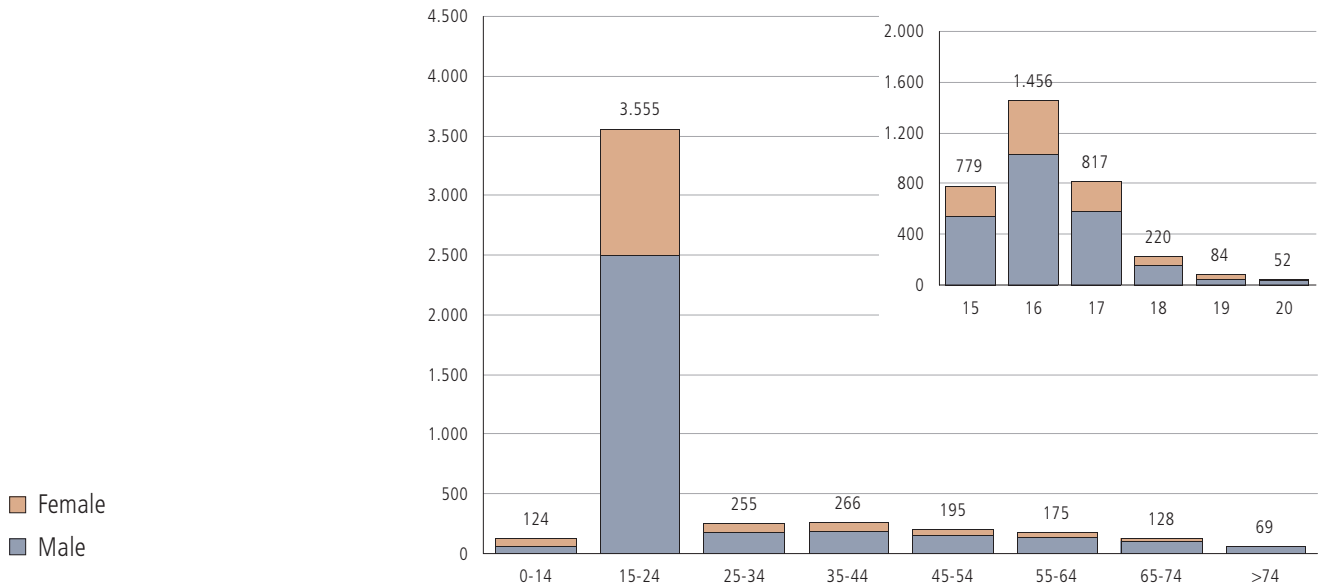


Table: Moped injuries by age and sex

Age	Injuries					
	Male		Female		Total	
	Drivers	Passengers	Drivers	Passengers	Drivers	Passengers
0-14	9	51	4	60	13	111
15-19	2.146	210	823	177	2.969	387
20-24	142	7	42	8	184	15
25-29	95	1	38	5	133	6
30-34	78	2	32	4	110	6
35-39	99	2	30	5	129	7
40-44	91	2	36	1	127	3
45-49	72	3	21	2	93	5
50-54	69	1	26	1	95	2
55-59	73	0	12	0	85	0
60-64	69	0	19	2	88	2
65-69	50	0	11	0	61	0
70-74	53	0	11	3	64	3
> 74	58	0	8	3	66	3
Unknown ^{nt}	4	0	1	1	12	3
Total	3.108	279	1.114	272	4.222	551

Moped fatalities by age and sex

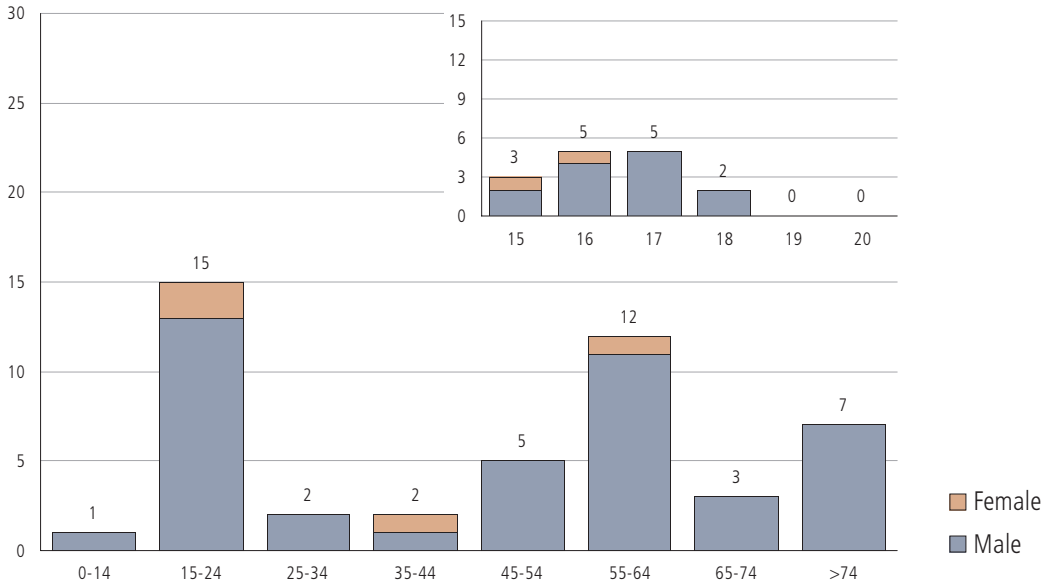


Table: Moped fatalities by age and sex

Age	Fatalities					
	Male		Female		Total	
	Drivers	Passengers	Drivers	Passengers	Drivers	Passengers
0-14	1	0	0	0	1	0
15-19	10	3	2	0	12	3
20-24	0	0	0	0	0	0
25-29	0	0	0	0	0	0
30-34	2	0	0	0	2	0
35-39	0	0	0	1	0	1
40-44	1	0	0	0	1	0
45-49	1	0	0	0	1	0
50-54	4	0	0	0	4	0
55-59	7	0	1	0	8	0
60-64	4	0	0	0	4	0
65-69	1	0	0	0	1	0
70-74	2	0	0	0	2	0
> 74	7	0	0	0	7	0
Unknown	0	0	0	0	0	0
Total	40	3	3	1	43	4

Overview of accidents involving passenger cars

Table: Accidents involving passenger cars

	1999	2000	2001	2002	2003
Accidents	35.118	34.644	35.954	36.006	36.139
Fatalities	614	549	570	524	524
Injuries	34.156	33.594	35.470	35.762	35.720

Car driver fatalities by power of vehicle per 1.000 participants

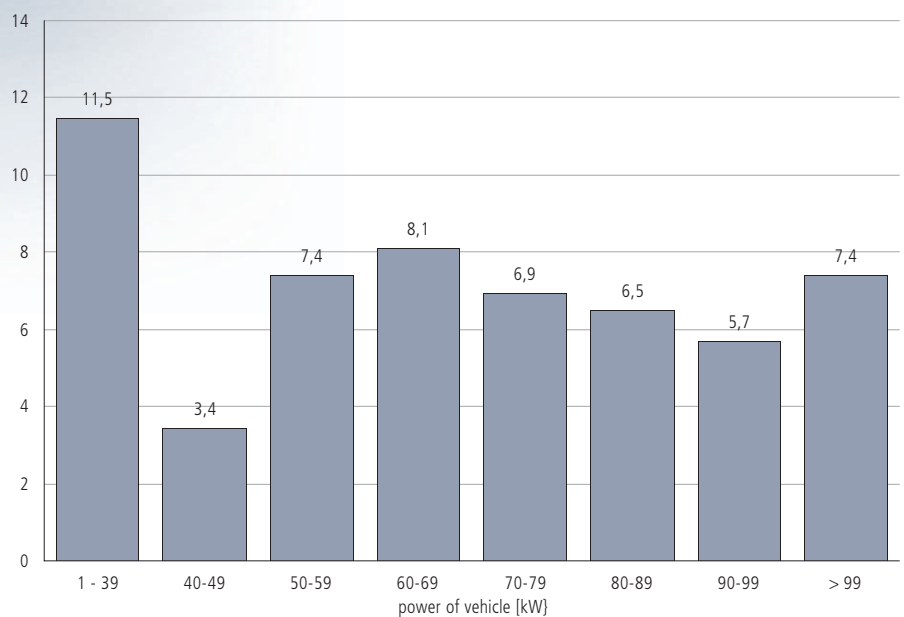
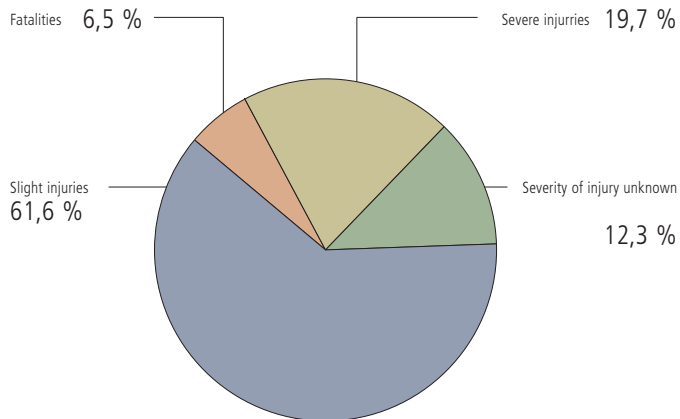


Table: Fatalities and severe injuries of car drivers per power of vehicle

Power of vehicle [kW]	Passenger Car Drivers			Per 1.000 Accidents	
	Participants*	Fatalities	Severe injuries	Fatalities	Severe injuries
1-9	41	0	1	0,0	24,4
10-19	13	0	1	0,0	76,9
20-29	107	1	9	9,3	84,1
30-39	2.368	28	121	11,8	51,1
40-49	7.887	27	344	3,4	43,6
50-59	12.058	89	554	7,4	45,9
60-69	12.213	99	555	8,1	45,4
70-79	4.770	33	150	6,9	31,4
80-89	6.310	41	240	6,5	38,0
90-99	1.933	11	80	5,7	41,4
> 99	4.600	34	185	7,4	40,2
Unknown	2.972	8	75	2,7	25,2
Total	55.272	371	2.315	6,7	41,9

*) Fatalities, Injuries und Uninjured

Car driver fatalities and injuries - not using a seat belt



Car driver fatalities and injuries - using a seat belt

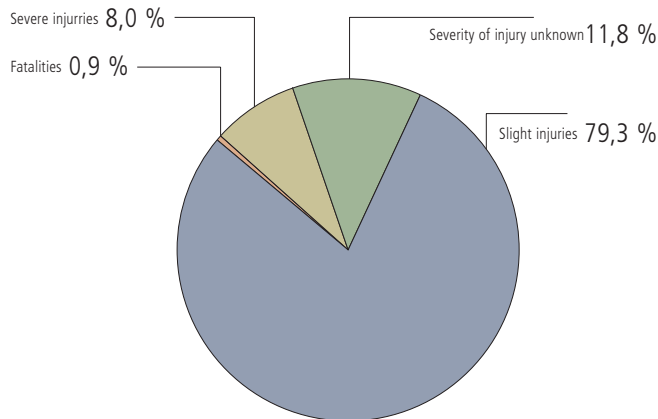
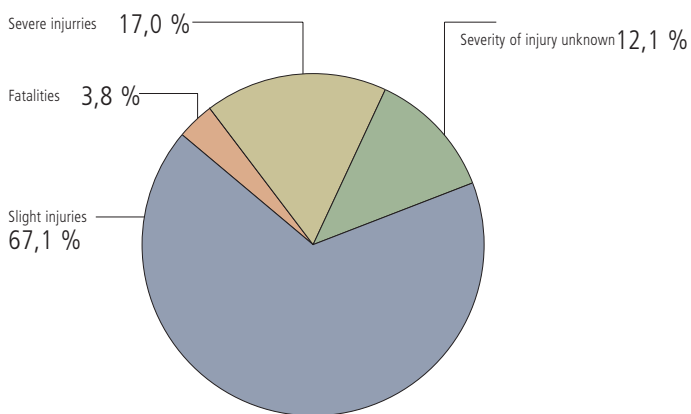


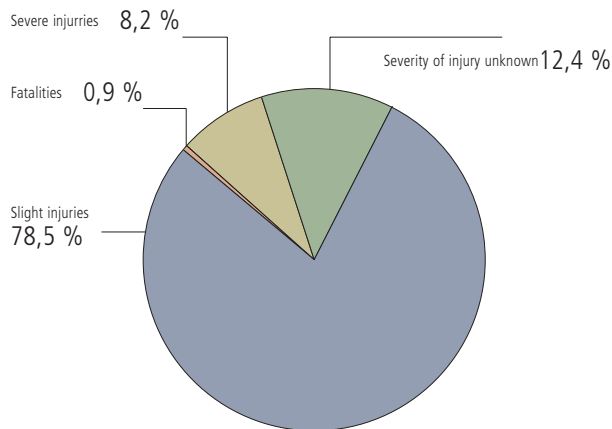
Table: Car passenger fatalities and injuries with and without safety belt by severity of injury

	Car driver fatalities and injuries					Car passenger fatalities and injuries				
	Total	without safety belt		with safety belt		Total	without safety belt		with safety belt	
		abs.	%	abs.	%		abs.	%	abs.	%
Fatalities	371	170	6,5	201	0,9	153	71	3,8	82	0,9
Severe injuries	2.315	515	19,7	1.800	8,0	1.087	320	17,0	767	8,2
Severity of injury unknown	2.969	321	12,3	2.648	11,8	1.383	228	12,1	1.155	12,4
Slight injuries	19.384	1.613	61,6	17.771	79,3	8.582	1.260	67,1	7.322	78,5
Total	25.039	2.619	100,0	22.420	100,0	11.205	1.879	100,0	9.326	100,0

Car passenger fatalities and injuries - not using a seat belt



Car passenger fatalities and injuries - using safety belts



Number of car passenger injuries by age

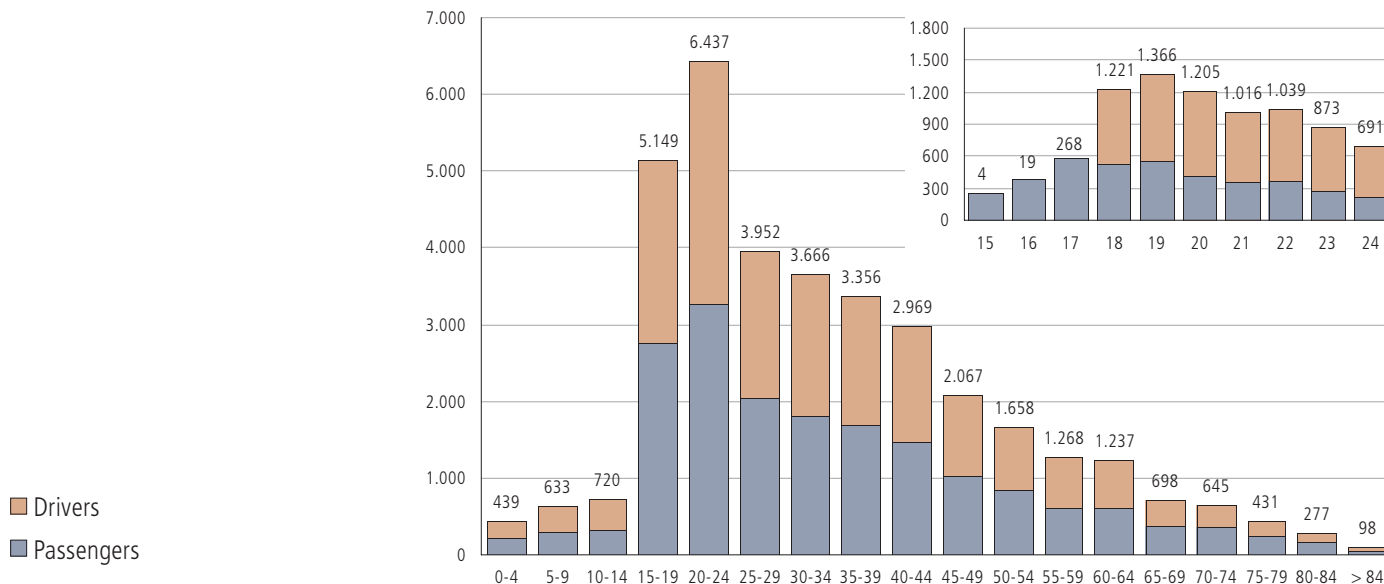


Table: Car passenger injuries by age and sex

Age	Car passenger injuries						Total
	Drivers			Passengers			
	Male	Female	Total	Male	Female	Total	
0-4	0	0	0	220	219	439	439
5-9	1	0	1	302	330	632	633
10-14	5	1	6	310	404	714	720
15-19	1.723	1.155	2.878	1.026	1.245	2.271	5.149
18	749	472	1.221	247	267	514	1.735
19	805	561	1.366	268	276	544	1.910
20	658	547	1.205	174	237	411	1.616
20-24	2.599	2.225	4.824	674	939	1.613	6.437
25-29	1.670	1.373	3.043	362	547	909	3.952
30-34	1.513	1.392	2.905	293	468	761	3.666
35-39	1.455	1.247	2.702	220	434	654	3.356
40-44	1.250	1.103	2.353	218	398	616	2.969
45-49	897	705	1.602	118	347	465	2.067
50-54	722	478	1.200	118	340	458	1.658
55-59	542	390	932	71	265	336	1.268
60-64	522	335	857	76	304	380	1.237
65-69	317	128	445	49	204	253	698
70-74	314	100	414	46	185	231	645
75-79	203	77	280	30	121	151	431
80-84	126	43	169	25	83	108	277
> 84	34	12	46	11	41	52	98
Unknown	6	4	11	3	6	9	20
Total	13.899	10.768	24.668	4.172	6.880	11.052	35.720

Number of car passenger fatalities by age

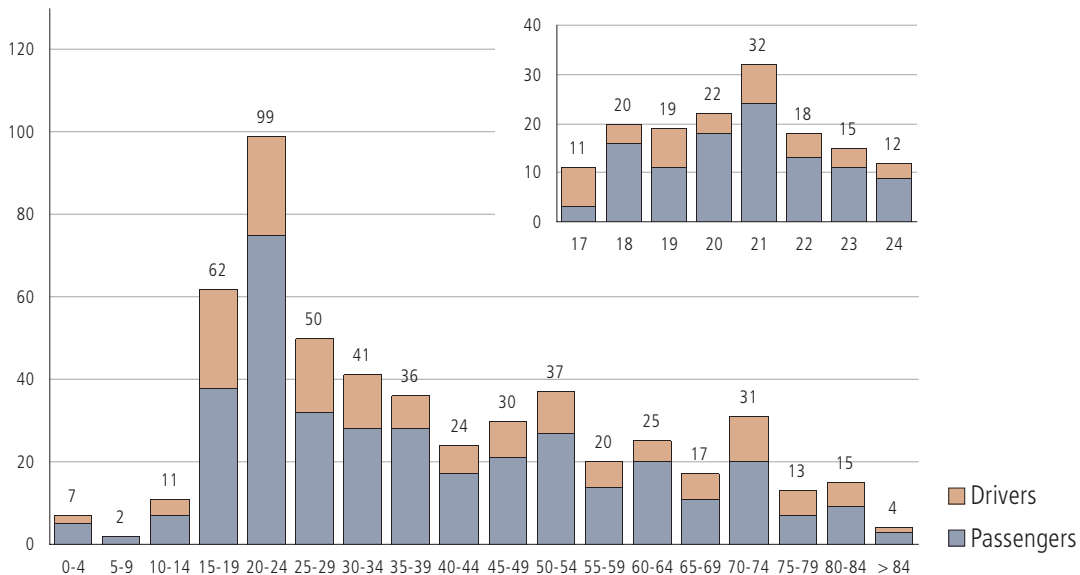


Table: Car passenger fatalities by age and sex

Age	Killed car passengers						Total
	Drivers			Passengers			
	Male	Female	Total	Male	Female	Total	
0-4	0	0	0	5	2	7	7
5-9	0	0	0	2	0	2	2
10-14	0	0	0	7	4	11	11
15-19	22	10	32	16	14	30	62
18	12	2	14	4	2	6	20
19	8	5	13	3	3	6	19
20	16	3	19	2	1	3	22
20-24	65	18	83	10	6	16	99
25-29	22	11	33	10	7	17	50
30-34	25	12	37	3	1	4	41
35-39	23	5	28	5	3	8	36
40-44	14	7	21	3	0	3	24
45-49	16	5	21	5	4	9	30
50-54	23	5	28	4	5	9	37
55-59	11	3	14	3	3	6	20
60-64	17	2	19	3	3	6	25
65-69	10	5	15	1	1	2	17
70-74	17	5	22	3	6	9	31
75-79	7	2	9	0	4	4	13
80-84	7	1	8	2	5	7	15
> 84	1	0	1	2	1	3	4
Unknown	0	0	0	0	0	0	0
Total	280	91	371	84	69	153	524

Lorries and buses - overview

Table: Accident frequencies - lorries und buses

	1999		2000		2001		2002		2003	
	Lorries	Buses	Lorries	Buses	Lorries	Buses	Lorries	Busus	Lorries	Buses
Accidents	4.601	782	4.432	707	4.344	785	4.342	767	4.316	737
Fatalities	27	21	31	13	39	14	32	5	42	0
Injuries	1.503	651	1.420	642	1.422	705	1.547	623	1.382	589



Fraction of accidents with lorries >3,5t on motorways

Total ■
Motorways ■

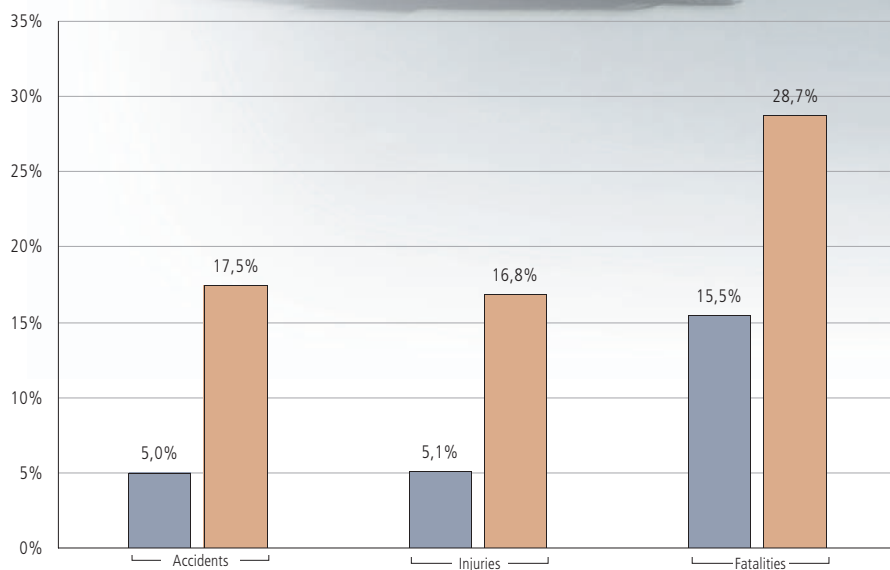


Table: Accidents involving lorries >3,5t on motorways

	Accidents with personal injury		Accidents involving lorries >3,5t		Fraction of lorries >3,5t per total accidents [%]	
	Total	Motorways	Total	Motorways	Total	Motorways
Accidents	43.426	2.620	2.166	458	5,0	17,5
Injuries	56.881	4.088	2.892	688	5,1	16,8
Fatalities	931	108	144	31	15,5	28,7

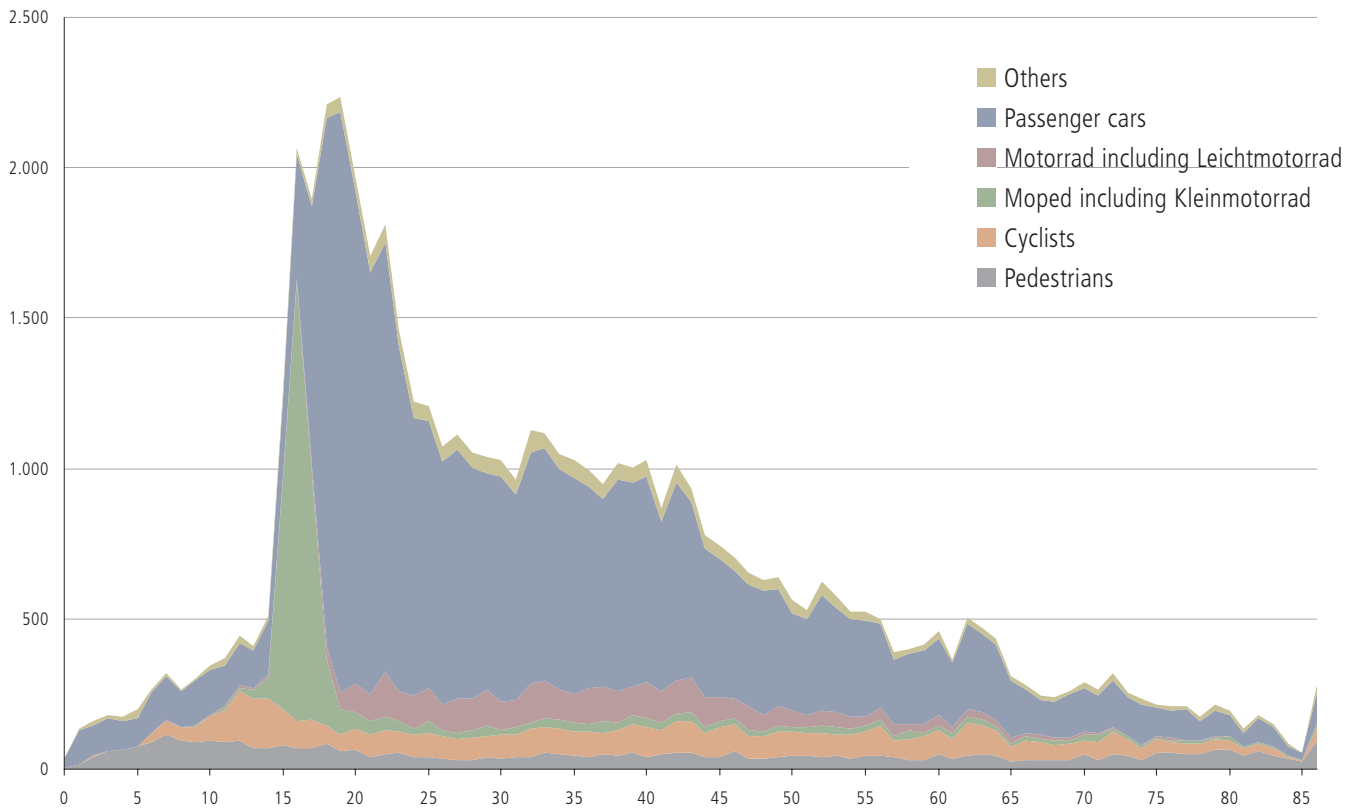
age groups

Casualties and fatalities by age and traffic participation

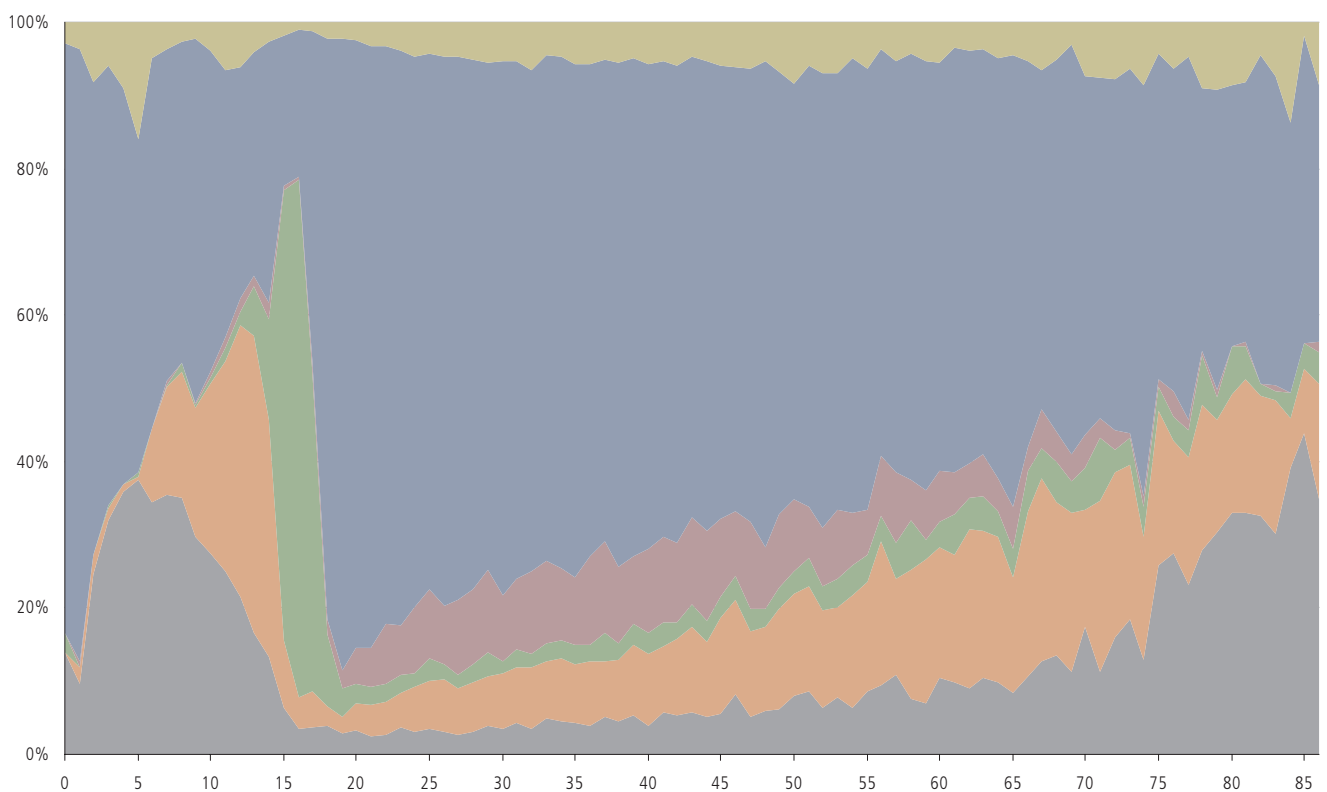
Table: Fatalities by age and participation

Age	Pedestrians		Cyclists		Moped		Kleinmot.		Leichtmot.		Motorrad		Passenger cars		Others	Total
	Drivers	Pass.	Drivers	Pass.	Drivers	Pass.	Drivers	Pass.	Drivers	Pass.	Drivers	Pass.	Drivers	Pass.		
0-4	3	-	-	-	-	-	-	-	-	-	-	-	-	7	-	10
5-9	1	1	-	-	-	-	-	-	-	-	-	-	-	2	3	7
10-14	3	4	-	1	-	-	-	-	-	-	-	-	-	11	1	20
15	1	-	-	2	1	-	-	-	-	-	-	-	-	3	1	8
16	2	1	-	4	1	-	-	-	-	-	-	-	-	9	-	17
17	-	-	-	4	1	-	-	-	-	-	-	-	5	6	-	16
18	-	1	-	2	-	-	-	-	-	-	-	-	14	6	1	24
19	2	-	-	-	-	-	-	-	-	2	-	13	6	-	-	23
20	-	-	-	-	-	-	-	-	-	3	-	19	3	-	-	25
21	1	-	-	-	-	-	-	-	-	3	-	27	5	1	-	37
22	-	-	-	-	-	-	-	1	-	5	-	15	3	1	-	25
23	-	-	-	-	-	-	-	-	-	3	-	11	4	1	-	19
24	2	-	-	-	-	-	-	-	-	6	-	11	1	1	-	21
25-29	1	-	-	-	-	-	-	1	-	12	3	33	17	6	-	73
30-34	1	-	-	2	-	-	-	-	-	5	1	37	4	7	-	57
35-39	3	-	-	-	1	-	-	-	-	15	1	28	8	8	-	64
40-44	6	2	-	1	-	-	-	-	-	22	-	21	3	8	-	63
45-49	7	5	-	1	-	-	-	-	-	9	-	21	9	5	-	57
50-54	9	6	-	4	-	-	-	-	-	4	-	28	9	3	-	63
55-59	7	5	-	8	-	-	-	-	-	4	1	14	6	3	-	48
60-64	11	11	-	4	-	-	-	-	-	3	-	19	6	2	-	56
65-69	9	3	-	1	-	-	-	1	-	3	-	15	2	3	-	37
70-74	14	7	-	2	-	-	-	-	-	1	-	22	9	3	-	58
> 74	49	10	-	7	-	-	-	-	-	-	-	18	14	5	-	103
Total	132	56	-	43	4	-	-	3	-	100	6	371	153	63	-	931

Number of casualties by age and participation (absolute)



Number of casualties by age and participation (relative)



AGE GROUPS

Table: Casualties by age and participation

Age	Pedestrians		Cyclists		Moped		Kleinmot.		Leichtmot.		Motorrad		Passenger cars		Others	Total
	Drivers	Pass.	Drivers	Pass.	Drivers	Pass.	Drivers	Pass.	Drivers	Pass.	Drivers	Pass.	Drivers	Pass.		
0-4	178	-	12	-	2	-	-	-	-	-	1	-	446	47	686	
5-9	461	165	9	-	6	-	-	-	-	-	3	1	634	71	1.350	
10-14	418	673	8	14	102	-	1	1	2	1	29	6	725	95	2.075	
15	82	115	1	627	151	3	1	1	-	-	6	4	257	24	1.272	
16	72	88	2	1.324	125	9	3	-	2	-	6	19	394	22	2.066	
17	70	94	-	754	61	7	-	7	3	17	5	273	580	25	1.896	
18	87	56	-	185	35	2	-	15	1	18	11	1.235	520	48	2.213	
19	62	54	-	70	14	-	-	17	1	33	5	1.379	550	52	2.237	
20	65	72	-	46	5	1	-	5	1	83	8	1.224	414	49	1.973	
21	42	72	-	41	3	-	-	7	-	77	6	1.043	359	55	1.705	
22	49	79	-	43	2	1	-	7	1	128	14	1.054	372	60	1.810	
23	55	68	-	32	3	-	-	3	1	86	9	884	267	56	1.464	
24	38	75	-	20	2	-	-	6	-	98	8	702	217	58	1.224	
25-29	178	367	1	131	6	2	-	20	3	464	50	3.076	926	264	5.488	
30-34	220	419	-	111	5	1	1	18	1	489	34	2.942	765	282	5.288	
35-39	230	424	1	127	8	2	-	12	-	486	36	2.730	662	271	4.989	
40-44	239	473	-	125	3	3	-	15	-	486	38	2.374	619	252	4.627	
45-49	209	425	-	92	5	2	-	12	-	289	35	1.623	474	205	3.371	
50-54	208	390	-	98	2	1	-	8	2	205	20	1.228	467	187	2.816	
55-59	193	379	2	92	-	1	-	9	-	142	9	946	342	111	2.226	
60-64	222	436	-	92	2	-	-	9	2	102	10	876	386	96	2.233	
65-69	148	278	-	62	-	-	-	8	-	51	1	460	255	65	1.328	
70-74	208	273	-	66	3	-	-	5	-	27	1	436	240	102	1.361	
> 74	644	327	-	73	3	-	-	5	-	12	-	513	325	152	2.054	
Unknown	7	22	-	5	1	-	-	-	-	4	-	11	9	1	60	
Total	4.385	5.824	36	4.230	549	35	6	190	20	3.298	345	25.039	11.205	2.650	57.812	

Number of injuries and fatalities by age and sex

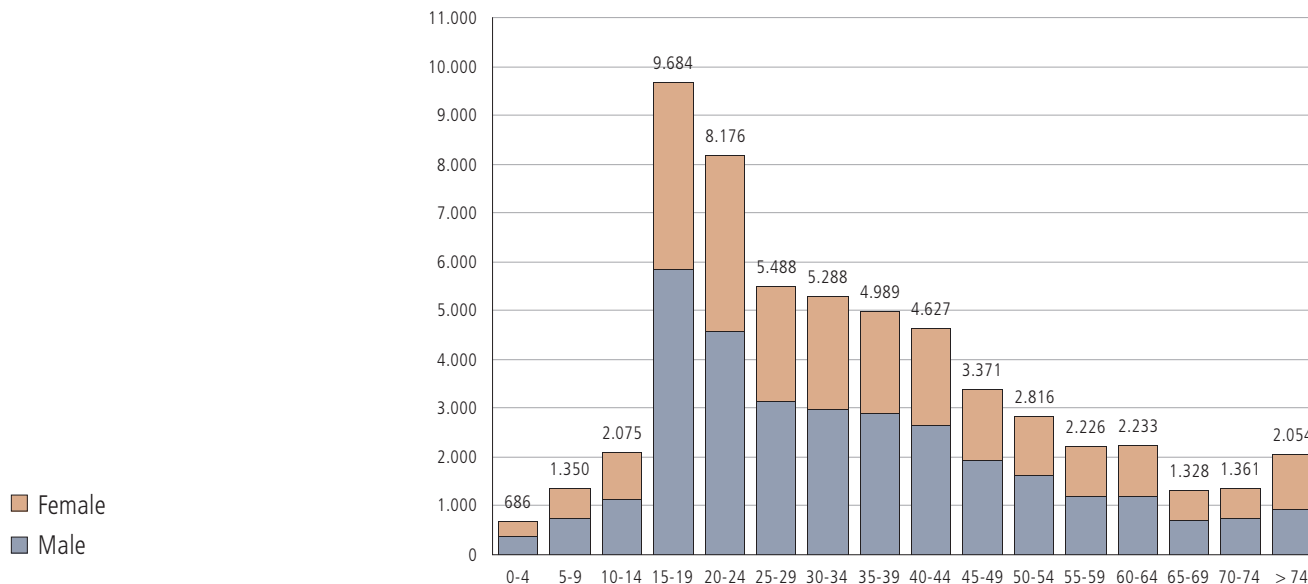


Table: Number of casualties by age and sex

Age	Male		Female		Total	
	Injuries	Verungl.	Injuries	Verungl.	Injuries	Verungl.
0-4	365	370	311	316	676	686
5-9	740	747	603	603	1.343	1.350
10-14	1.132	1.144	923	931	2.055	2.075
15-19	5.766	5.826	3.830	3.858	9.596	9.684
20-24	4.470	4.572	3.579	3.604	8.049	8.176
25-29	3.089	3.142	2.326	2.346	5.415	5.488
30-34	2.932	2.975	2.299	2.313	5.231	5.288
35-39	2.832	2.885	2.093	2.104	4.925	4.989
40-44	2.599	2.652	1.965	1.975	4.564	4.627
45-49	1.881	1.926	1.433	1.445	3.314	3.371
50-54	1.567	1.615	1.186	1.201	2.753	2.816
55-59	1.153	1.188	1.025	1.038	2.178	2.226
60-64	1.149	1.192	1.028	1.041	2.177	2.233
65-69	674	697	617	631	1.291	1.328
70-74	688	731	615	630	1.303	1.361
> 74	870	925	1.081	1.129	1.951	2.054
Unknown	39	39	20	20	59	59
Total	31.946	32.626	24.934	25.185	56.881	57.812

Number of fatalities by age and sex

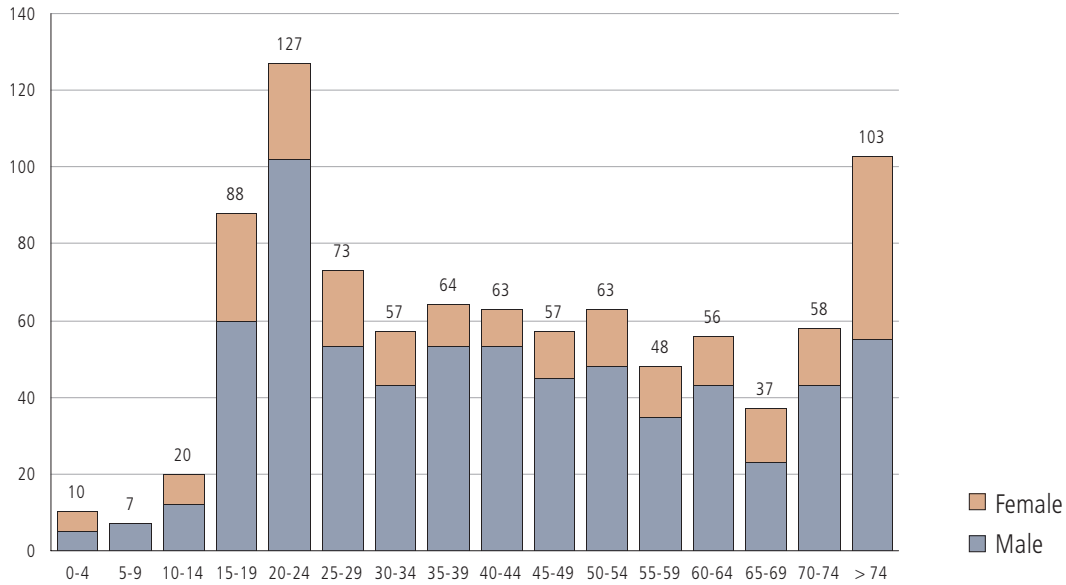


Table: Number of fatalities by age and sex

Age	Male	Female	Total
0-4	5	5	10
5-9	7	0	7
10-14	12	8	20
15-19	60	28	88
20-24	102	25	127
25-29	53	20	73
30-34	43	14	57
35-39	53	11	64
40-44	53	10	63
45-49	45	12	57
50-54	48	15	63
55-59	35	13	48
60-64	43	13	56
65-69	23	14	37
70-74	43	15	58
> 74	55	48	103
Unknown	0	0	0
Total	680	251	931

Number of casualties by age and traffic participation

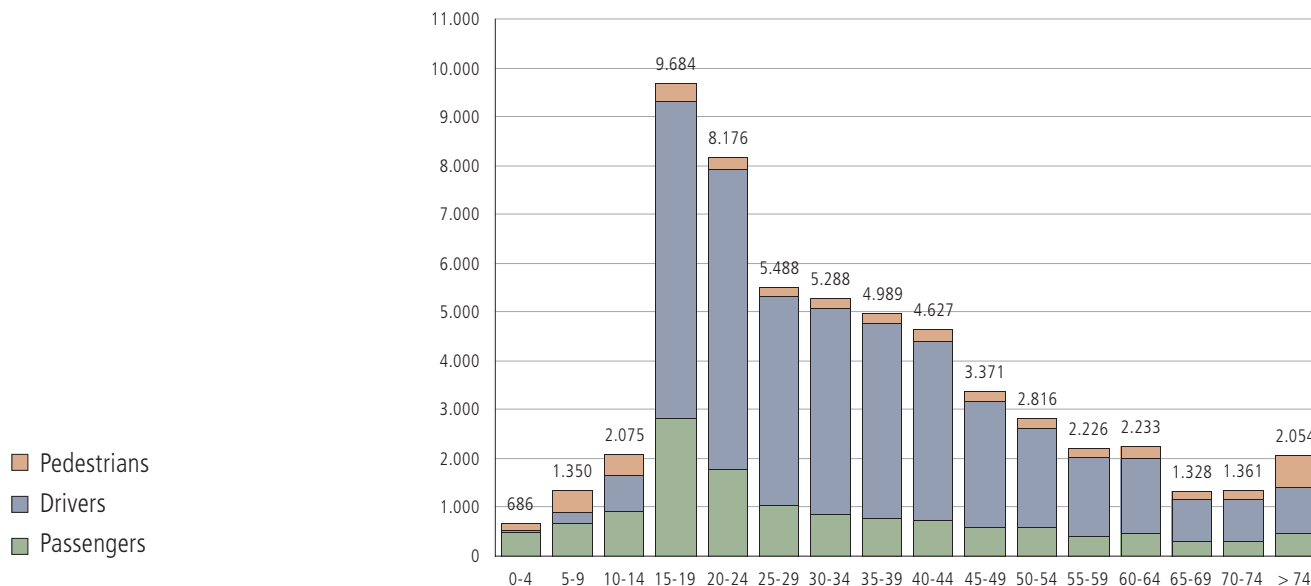


Table: Number of casualties by age and traffic participation

Age	Pedestrians		Drivers		Passengers		Total	
	Injuries	Casualties	Injuries	Casualties.	Injuries	Casualties	Injuries	Casualties
0-4	175	178	13	13	488	495	676	686
5-9	460	461	207	210	676	679	1.343	1.350
10-14	415	418	720	725	920	932	2.055	2.075
15-19	368	373	6.420	6.470	2.808	2.841	9.596	9.684
20-24	246	249	6.042	6.149	1.761	1.778	8.049	8.176
25-29	177	178	4.201	4.250	1.037	1.060	5.415	5.488
30-34	219	220	4.147	4.196	865	872	5.231	5.288
35-39	227	230	3.940	3.990	758	769	4.925	4.989
40-44	233	239	3.593	3.647	738	741	4.564	4.627
45-49	202	209	2.541	2.581	571	581	3.314	3.371
50-54	199	208	1.993	2.037	561	571	2.753	2.816
55-59	186	193	1.589	1.623	403	410	2.178	2.226
60-64	211	222	1.512	1.551	454	460	2.177	2.233
65-69	139	148	858	883	294	297	1.291	1.328
70-74	194	208	796	831	313	322	1.303	1.361
> 74	595	644	907	947	449	463	1.951	2.054
Unknown	7	7	42	42	11	11	60	60
Total	4.253	4.385	39.521	40.145	13.107	13.282	56.881	57.812

Number of fatalities by age and participation

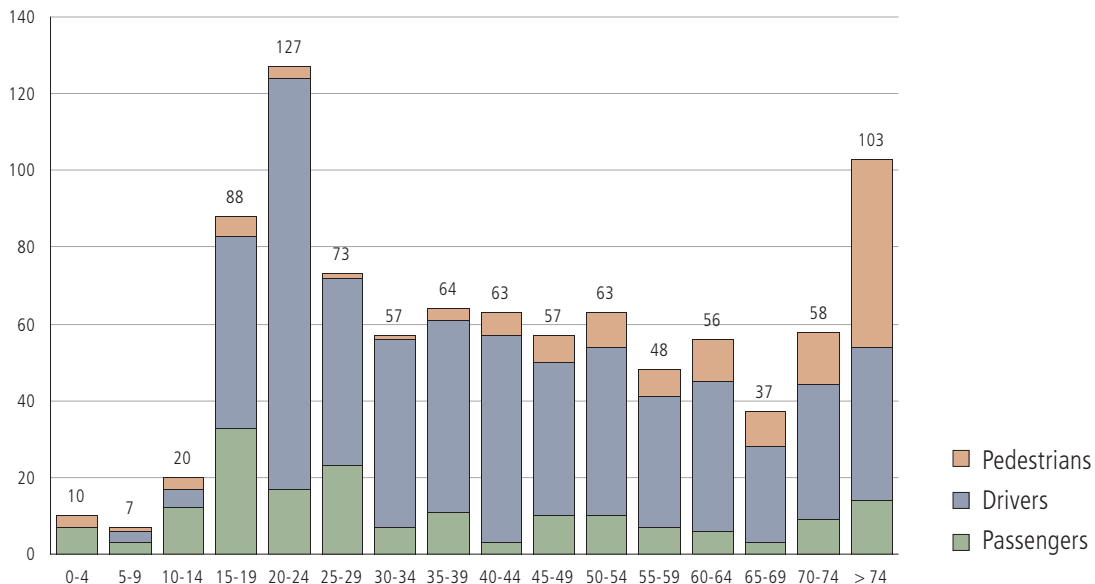


Table: Number of fatalities by age and participation

Age	Pedestrians	Drivers	Passengers	Total
0-4	3	0	7	10
5-9	1	3	3	7
10-14	3	5	12	20
15-19	5	50	33	88
20-24	3	107	17	127
25-29	1	49	23	73
30-34	1	49	7	57
35-39	3	50	11	64
40-44	6	54	3	63
45-49	7	40	10	57
50-54	9	44	10	63
55-59	7	34	7	48
60-64	11	39	6	56
65-69	9	25	3	37
70-74	14	35	9	58
> 74	49	40	14	103
Unknown	0	0	0	0
Total	132	624	175	931

Children fatalities and injuries by age and participation

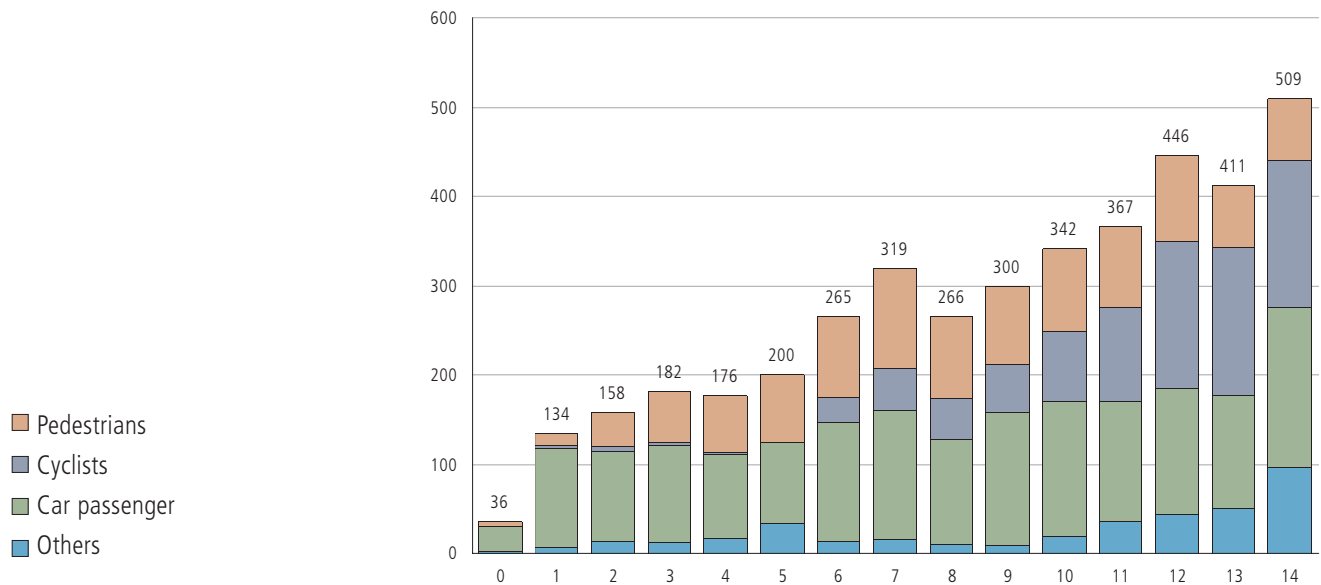


Table: Children fatalities and injuries by age und participation

Age	Pedestrians	Cyclists	Car Passengers	Others	Total
0	5	0	29	2	36
1	13	3	111	7	134
2	39	4	102	13	158
3	58	3	109	12	182
4	63	2	95	16	176
5	75	1	91	33	200
6	91	27	134	13	265
7	113	47	144	15	319
8	93	46	117	10	266
9	89	53	149	9	300
10	94	79	150	19	342
11	92	105	134	36	367
12	96	165	141	44	446
13	68	167	125	51	411
14	68	165	181	95	509
Total	1.057	867	1.812	375	4.111

Children fatalities and injuries* by age - on their way to school

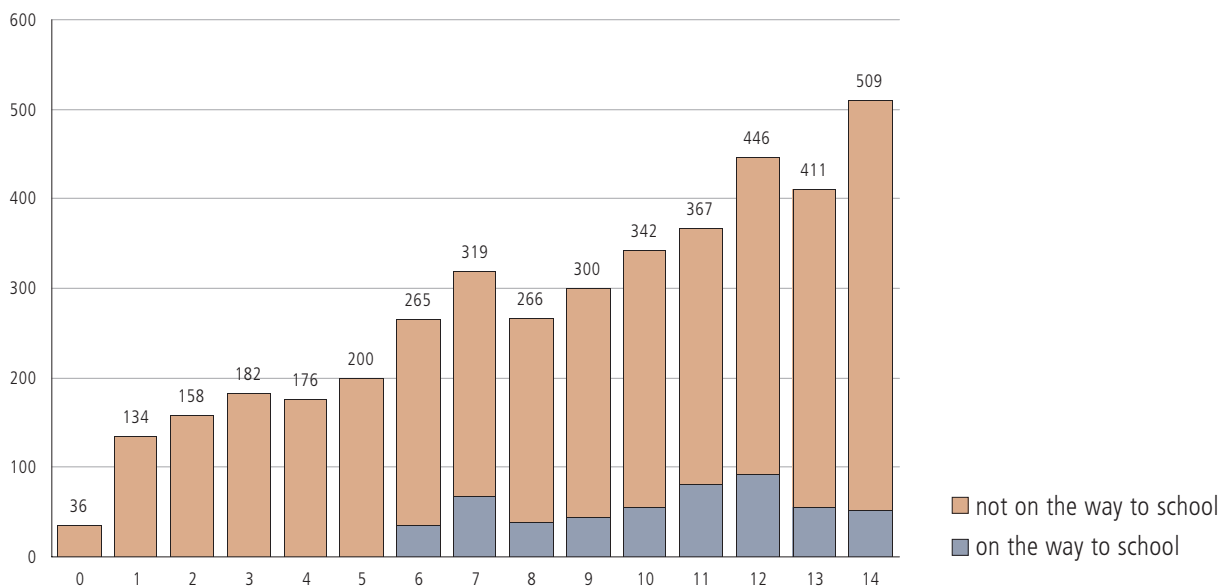


Table: Children fatalities and injuries* by federal state

	Accidents with Children	Injured Children	Children Fatalities	ratio total accidents		
				Accidents [%]	Injuries [%]	Fatalities [%]
BGLD	81	94	1	8,2	7,0	1,9
KTN	294	300	2	8,8	7,0	3,4
NÖ	605	688	7	7,9	6,7	2,5
OÖ	834	920	10	9,0	7,4	5,7
SBG	275	292	1	9,0	7,4	1,7
STMK	503	542	11	6,7	5,6	6,0
TIROL	412	456	2	9,2	7,7	3,1
VBG	207	209	1	11,6	9,3	5,9
WIEN	538	573	2	10,0	8,4	4,4
AUSTRIA	3.749	4.074	37	8,6	7,2	4,0

Table: Accidents on the way to school** by federal state

	Accidents	Injured pupils	Killed pupils
BGLD	10	10	0
KTN	31	35	0
NÖ	68	84	0
OÖ	120	127	2
SBG	41	50	0
STMK	72	71	0
TIROL	45	56	0
VBG	42	43	0
WIEN	78	80	0
AUSTRIA	507	556	2

*) Children: 0–14 years

**) Pupils: 6–15 Years

Children fatalities and injuries* per participation

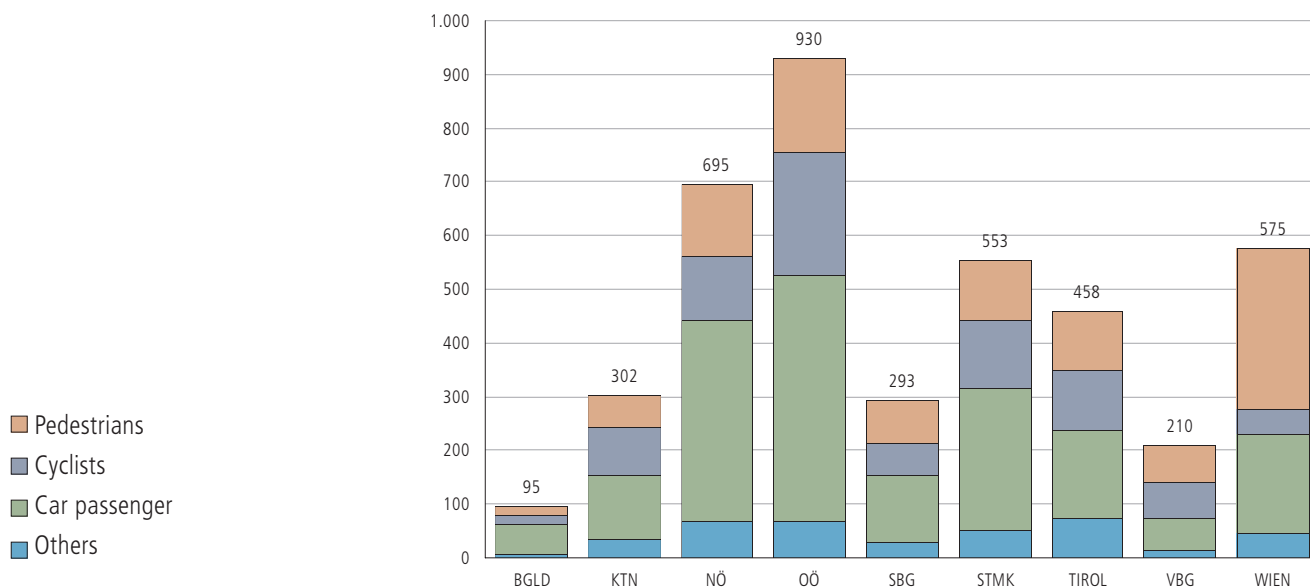


Table: Children fatalities and injuries* by federal state and participation in traffic

	Accidents involving children as ...				Injured children as ...				Children fatalities as ...			
	Pedestrians	Cyclists	Car Passengers	Others	Pedestrians	Cyclists	Car Passengers	Others	Pedestrians	Cyclists	Car Passengers	Others
BGLD	17	18	42	4	18	16	55	5	0	0	1	0
KTN	59	99	100	37	59	90	117	34	0	0	2	0
NÖ	135	132	292	48	132	122	369	65	1	0	5	1
OÖ	180	238	352	69	175	224	455	66	2	5	1	2
SBG	79	69	98	29	80	59	126	27	0	0	1	0
STMK	112	132	215	48	112	125	255	50	1	0	9	1
TIROL	110	122	127	55	109	112	163	72	0	0	1	1
VBG	68	75	51	15	68	67	60	14	1	0	0	0
WIEN	302	47	153	38	297	47	185	44	2	0	0	0
AUSTRIA	1.062	932	1.430	343	1.050	862	1.785	377	7	5	20	5

*) Children: 0–14 Jahre

Children fatalities and injuries in passenger cars by age

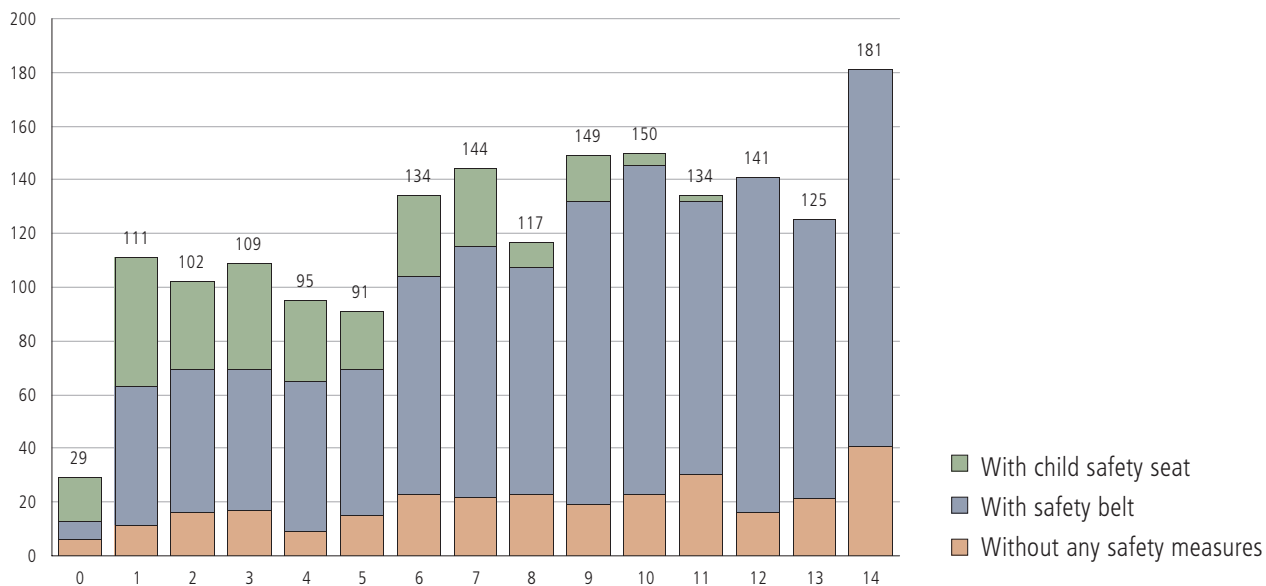


Table: Children fatalities and injuries in passenger cars by age

Age	0	1	2	3	4	5	6	7	8	9	10	11	12	13	14	Ges.
In child safety seat	16	48	33	40	30	22	30	29	10	17	5	2	0	0	0	282
With seat belts	7	52	53	52	56	54	81	93	84	113	122	102	125	104	140	1.238
Without safety measures	6	11	16	17	9	15	23	22	23	19	23	30	16	21	41	292
Total	29	111	102	109	95	91	134	144	117	149	150	134	141	125	181	1.812

Senior* fatalities and injuries by participation

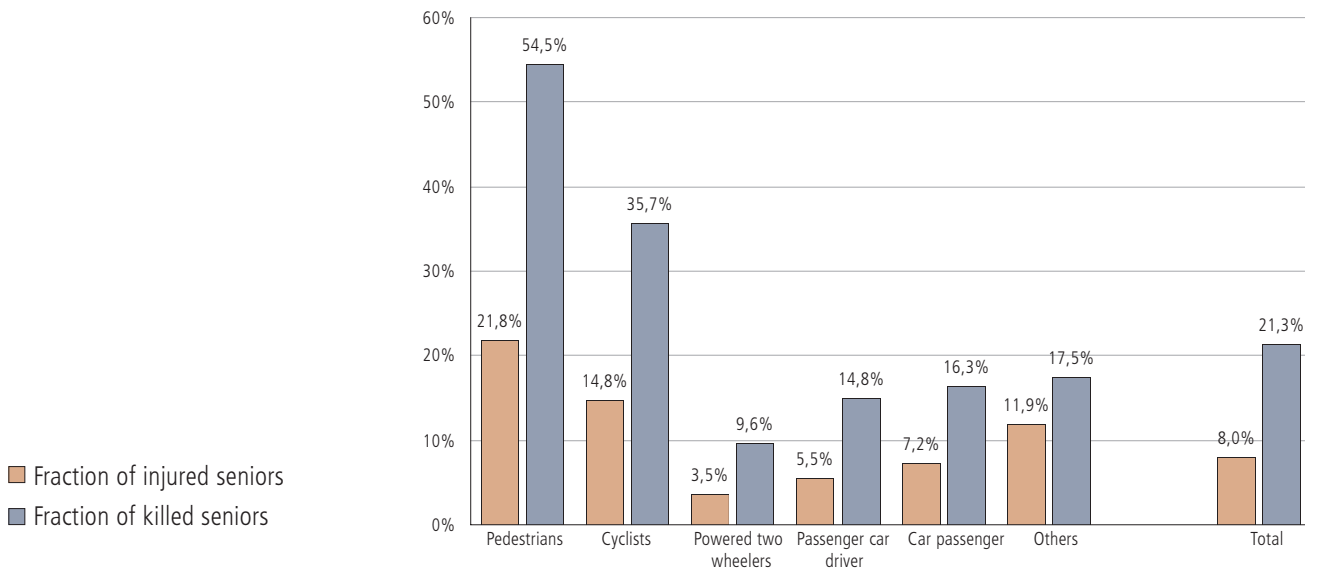
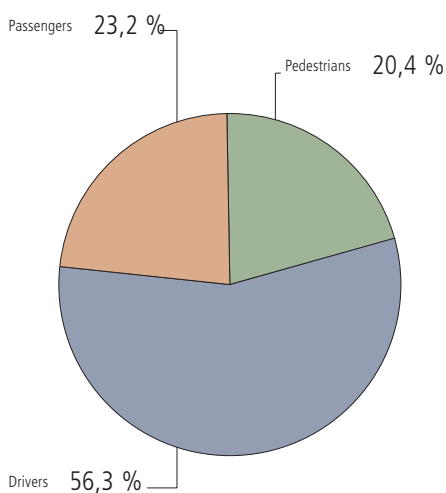


Table: Senior fatalities and injuries by participation

	Injuries total	Injured Seniors	Fraction of Seniors [%]	Fatalities total	Fatalities Seniors	Fraction of Seniors [%]
Pedestrians	4.253	928	21,8	132	72	54,5
Cyclists	5.804	858	14,8	56	20	35,7
Powered two-wheelers	8.517	302	3,5	156	15	9,6
Passenger car drivers	24.668	1.354	5,5	371	55	14,8
Passengers	11.052	795	7,2	153	25	16,3
Others	2.587	308	11,9	63	11	17,5
Total	56.881	4.545	8,0	931	198	21,3

*) Seniors: 65 years and older

Number of injured seniors*



Number of senior* fatalities

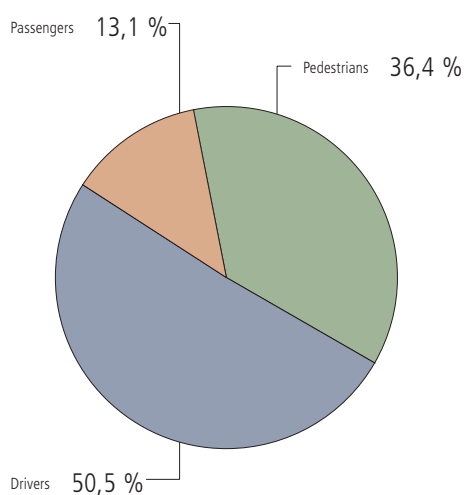


Table: Senior* fatalities by age

	Injured seniors			Senior fatalities++		
	Male	Female	Total	Male	Female	Total
Pedestrians	304	624	928	32	40	72
Drivers	1.723	838	2.561	81	19	100
Passengers	205	851	1.056	8	18	26
Total	2.232	2.313	4.545	121	77	198

*) Seniors: 65 years and older

accident types & causes

Fraction of assumed accident causes per total road accidents with lethal consequences

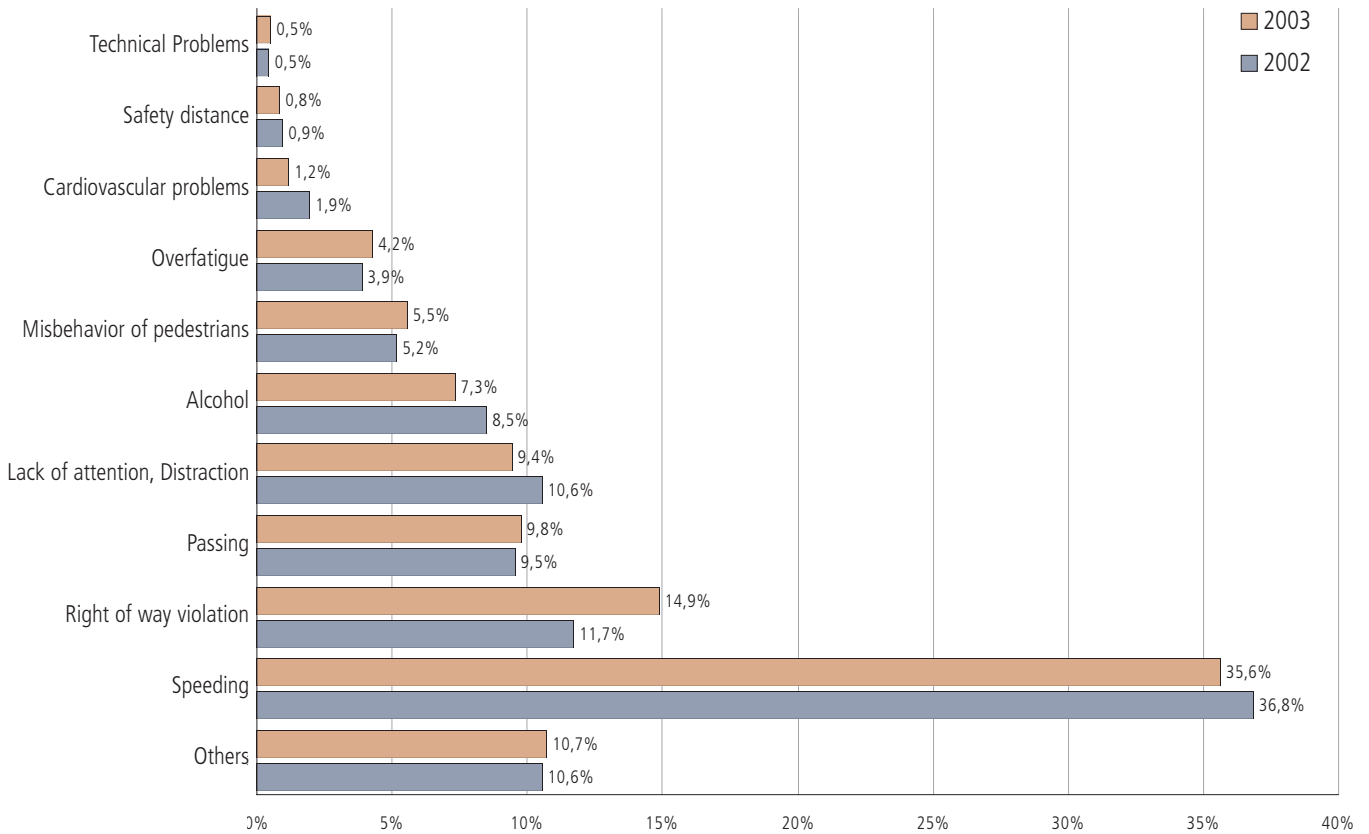


Table: Assumed accident causes for road accidents with lethal consequences (BMI)*

Assumed cause	Accident rate 2002	Accident rate 2003
Speeding	321	302
Right of way violation	102	126
Lack of attention, Distraction	92	80
Passing	83	83
Alcohol	74	62
Misbehavior of pedestrians	45	47
Overfatigue	34	36
Cardiovascular problems	17	10
Safety distance	8	7
Technical Problems	4	4
Others	92	91
Total	872	848

Quelle: Bundesministerium für Inneres, Abteilung II/2/d

*) Have a look to: <http://www.bmi.gv.at/verkehrsangelegenheiten/>

Fraction of fatalities in single vehicle accidents per total number of fatalities

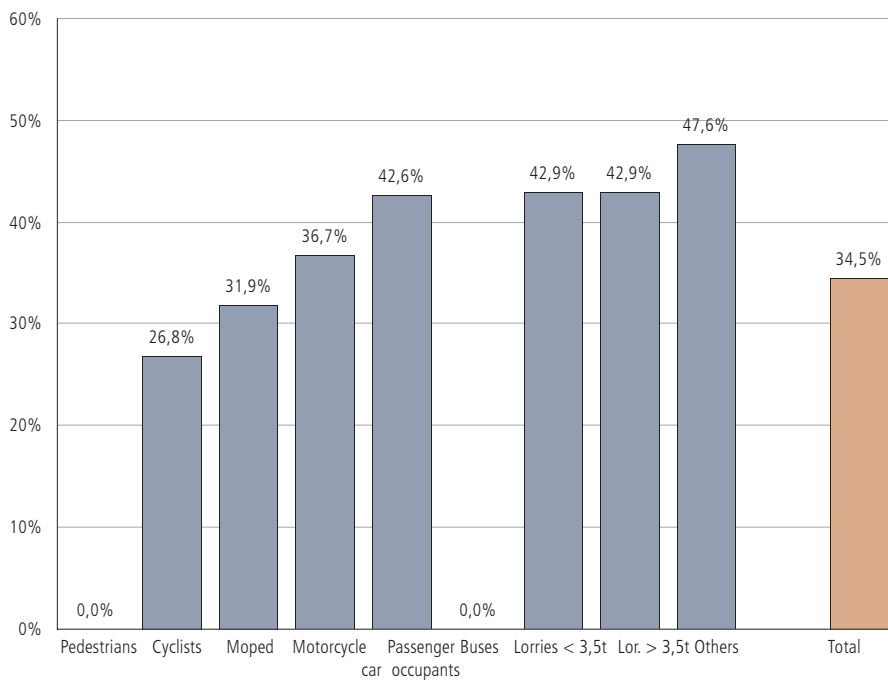


Table: Total fatalities and fatalities in single vehicle accidents

	Fatalities			Single vehicle accidents		
	Inside urban area	Outside urban area	Total	Inside urban area	Outside urban area	Total
Pedestrians	88	44	132	0	0	0
Bicycle	25	31	56	6	9	15
Moped	21	26	47	6	9	15
Motorcycle	19	90	109	7	33	40
Passenger cars	56	468	524	25	198	223
Buses	0	0	0	0	0	0
Lorries < 3,5t	4	24	28	2	10	12
Lorries > 3,5t	1	13	14	1	5	6
Others	9	12	21	3	7	10
Total	223	708	931	50	271	321

special issues

Traffic participants under the influence of alcohol by age and sex

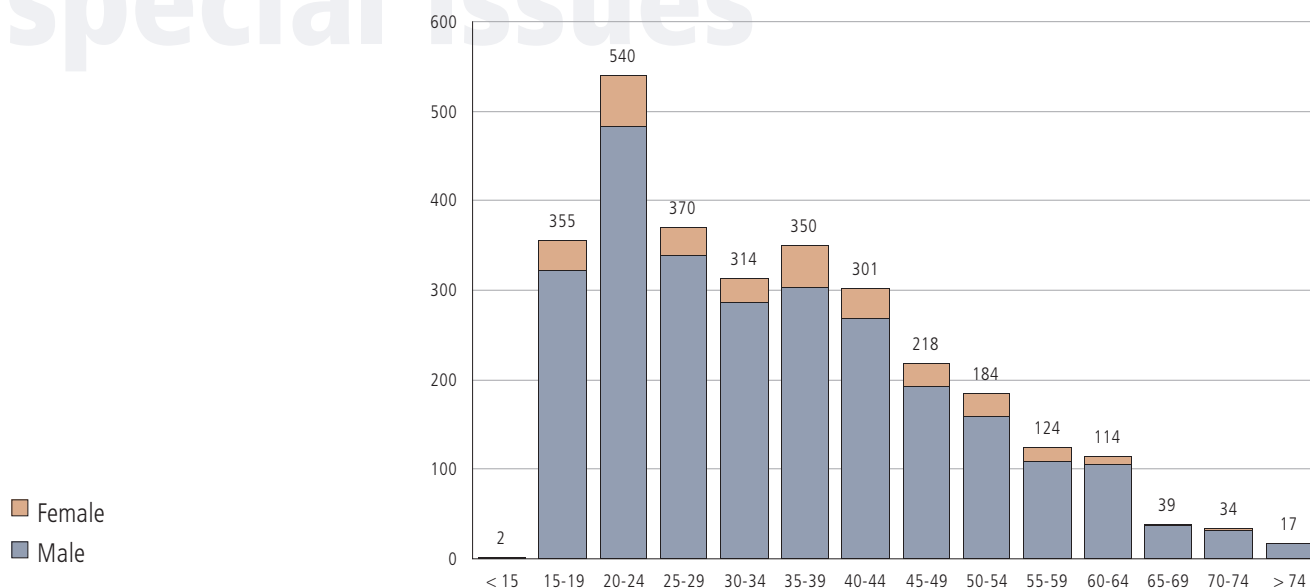
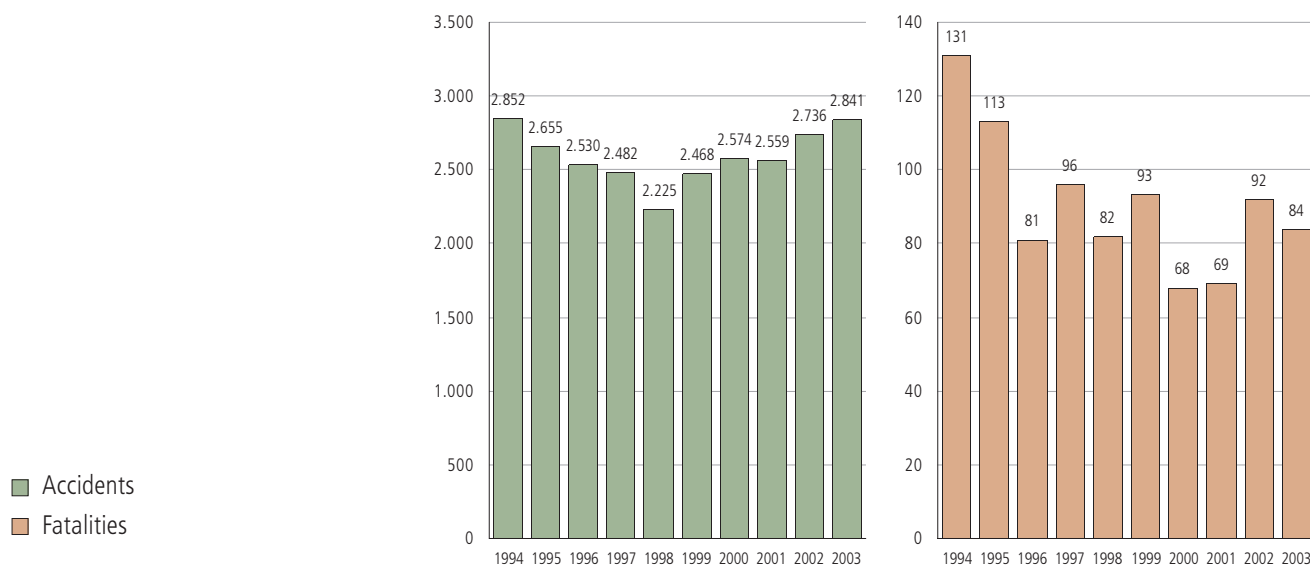


Table: Participants under the influence of alcohol by age and sex

	<15	15-19	20-24	25-29	30-34	35-39	40-44	45-49	50-54	55-59	60-64	65-69	70-74	>74	Unbek.	Summe
Male	1	322	482	339	286	304	268	192	160	109	106	37	32	16	0	2.654
Female	1	33	58	31	28	46	33	26	24	15	8	2	2	1	0	308
Total	2	355	540	370	314	350	301	218	184	124	114	39	34	17	0	2.962
Alcoholised participants [%]	0,1	12,0	18,2	12,5	10,6	11,8	10,2	7,4	6,2	4,2	3,8	1,3	1,1	0,6	0,0	100,0
Male participants [%]	50,0	90,7	89,3	91,6	91,1	86,9	89,0	88,1	87,0	87,9	93,0	94,9	94,1	94,1	-	89,6

Alcohol related accidents and fatalities 1994 - 2003



Alcohol related accidents by time of day

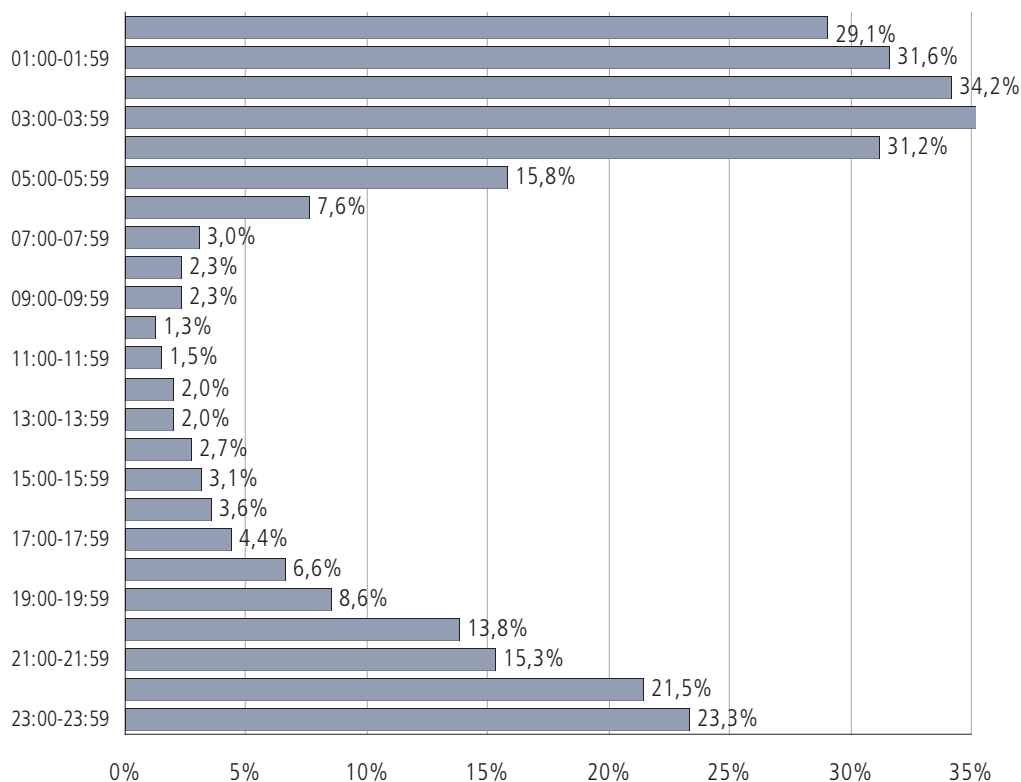


Table: Alcohol related accidents by time of day

Daytime	Acc. total	Alcohol related	Fraction [%]	Daytime	Acc. total	Alcohol related	Fraction [%]
00:00-00:59	399	116	29,1	12:00-12:59	2.610	52	2,0
01:00-01:59	472	149	31,6	13:00-13:59	2.716	53	2,0
02:00-02:59	392	134	34,2	14:00-14:59	2.920	80	2,7
03:00-03:59	392	139	35,5	15:00-15:59	3.115	98	3,1
04:00-04:59	410	128	31,2	16:00-16:59	3.418	123	3,6
05:00-05:59	670	106	15,8	17:00-17:59	3.723	164	4,4
06:00-06:59	1.335	102	7,6	18:00-18:59	3.062	202	6,6
07:00-07:59	2.175	66	3,0	19:00-19:59	2.172	186	8,6
08:00-08:59	1.962	46	2,3	20:00-20:59	1.539	213	13,8
09:00-09:59	1.943	45	2,3	21:00-21:59	1.156	177	15,3
10:00-10:59	2.378	30	1,3	22:00-22:59	960	206	21,5
11:00-11:59	2.714	41	1,5	23:00-23:59	793	185	23,3
				Total	43.426	2.841	6,5

Fraction of alcohol related accidents per total number of accidents by federal state

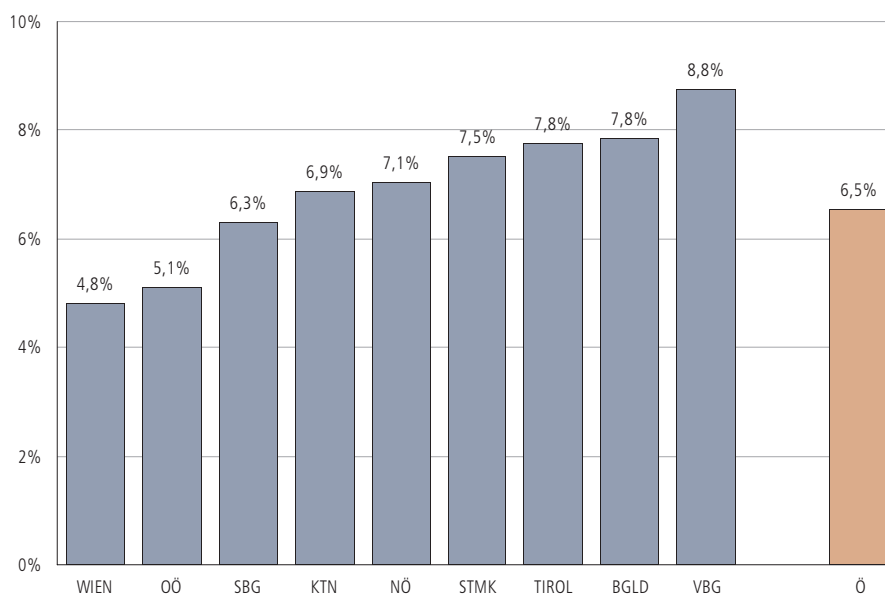
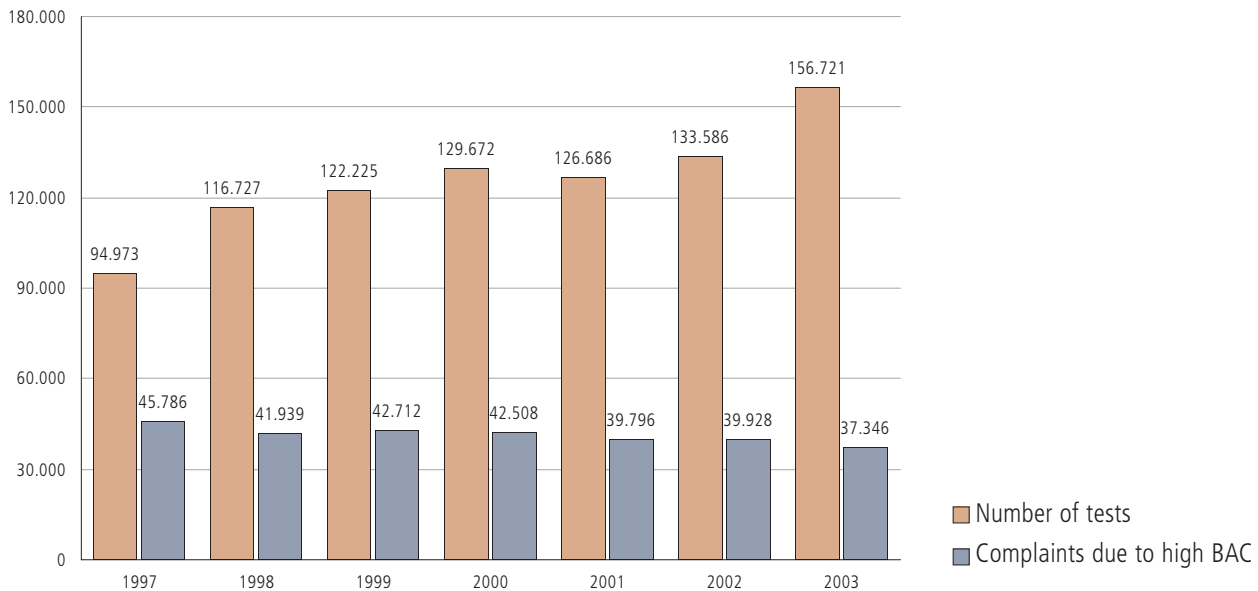


Table: Alcohol related accidents by federal state

	Accidents caused by alcohol			Fraction per accident total [%]		
	Accidents	Injuries	Fatalities	Accidents	Injuries	Fatalities
BGLD	77	105	3	7,8	7,9	5,8
KTN	230	337	8	6,9	7,9	13,6
NÖ	539	757	22	7,1	7,4	7,9
OÖ	473	717	9	5,1	5,8	5,2
SBG	192	277	0	6,3	7,1	0,0
STMK	568	767	27	7,5	7,9	14,8
TIROL	347	463	7	7,8	7,8	10,9
VBG	157	224	5	8,8	9,9	29,4
WIEN	258	373	3	4,8	5,5	6,7
AUSTRIA	2.841	4.020	84	6,5	7,1	9,0

Evolution of traffic-supervision concerning alcohol 1997–2003 (BMI)*



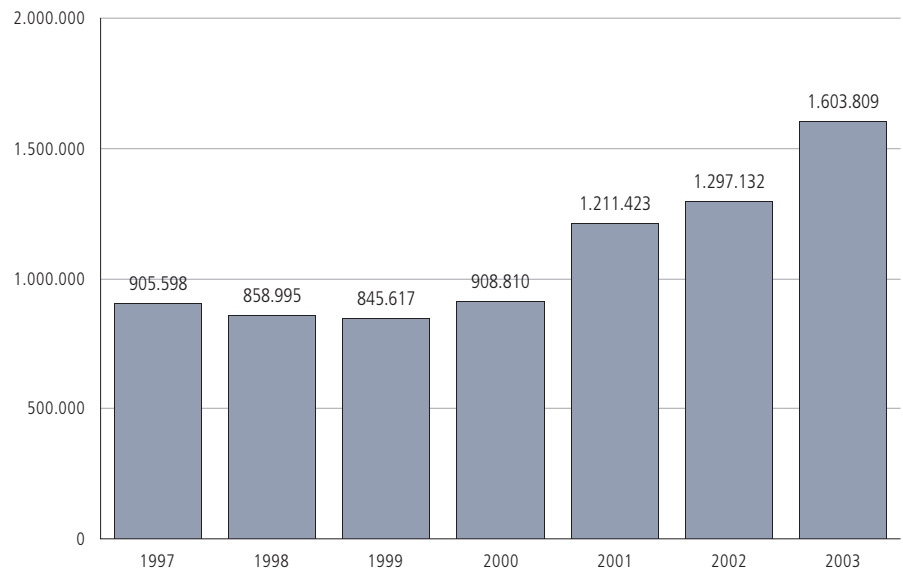
Quelle: BMI Abt II/2

Table: Accidents before and after launch of 0,5‰ BAC limit

Accidents with personal injury	Jan. 1992–Dec. 1997 (0,8‰)	Jan. 1998–Dec. 2003 (0,5‰)	Change [%]
Alcohol related accidents	16.298	15.403	-5,5
Accidents total	245.440	253.373	3,2
Fraction of alcohol related accidents	6,6	6,1	-8,5
Injuries - alcohol related	23.085	21.676	-6,1
Injuries total	317.306	330.803	4,3
Fraction of alcohol related injuries	7,3	6,6	-9,9
Fatalities - alcohol related	662	488	-26,3
Fatalities total	7.366	5.863	-20,4
Fraction of alcohol related fatalities	9,0	8,3	-7,4

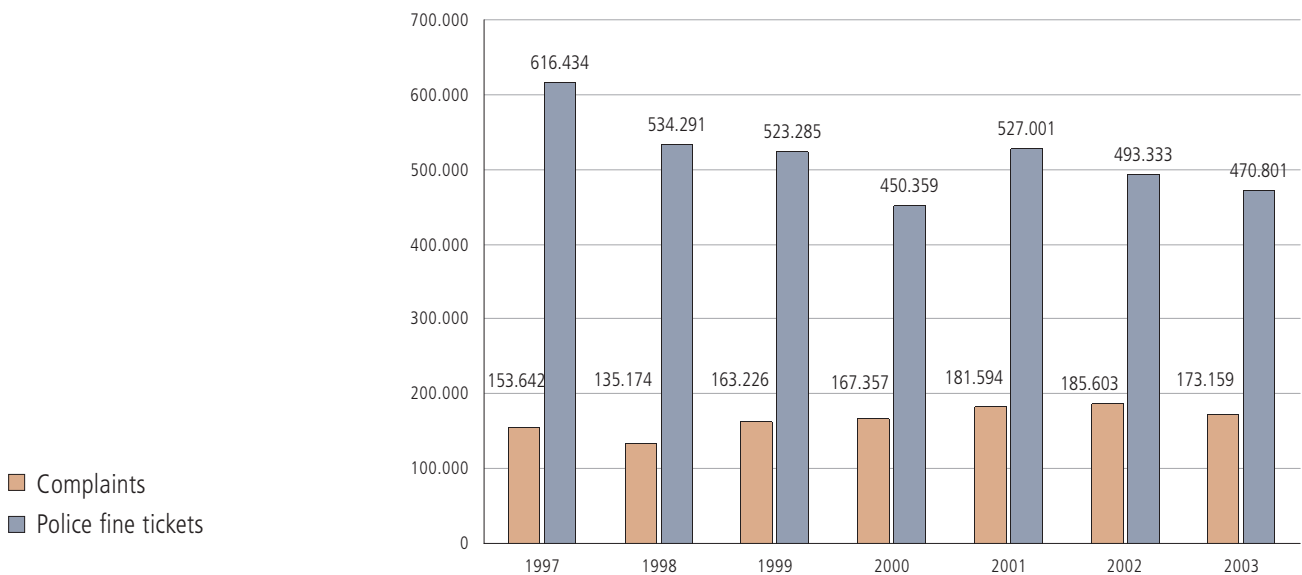
*)Have a look to: <http://www.bmi.gv.at/verkehrsangelegenheiten/>

Radar- based* speed monitoring - number of complaints



Source: Bundesministerium für Inneres, Abteilung II/2/d

Laser based-speed monitoring (1997-2003)



Source: Bundesministerium für Inneres, Abteilung II/2/d

*) including video- and section control

Injuries and fatalities of foreigners

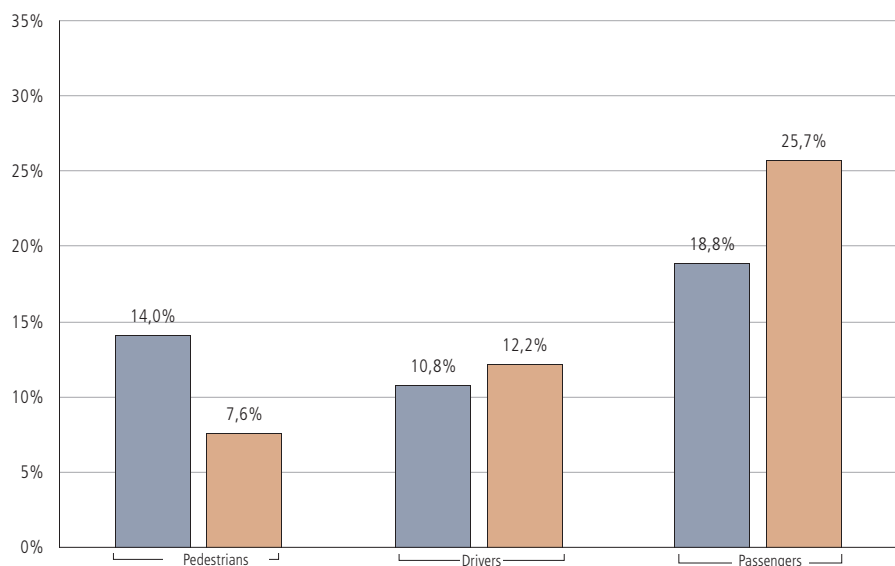


Table: Injuries and fatalities of foreigners

	Injuries			Fatalities		
	Total	Foreigners [%]	Fraction	Total	Foreigners [%]	Fraction
Pedestrians	4.253	596	14,0	132	10	7,6
Drivers	39.521	4.251	10,8	624	76	12,2
Passengers	13.107	2.468	18,8	175	45	25,7
Total	56.881	7.315	12,9	931	131	14,1

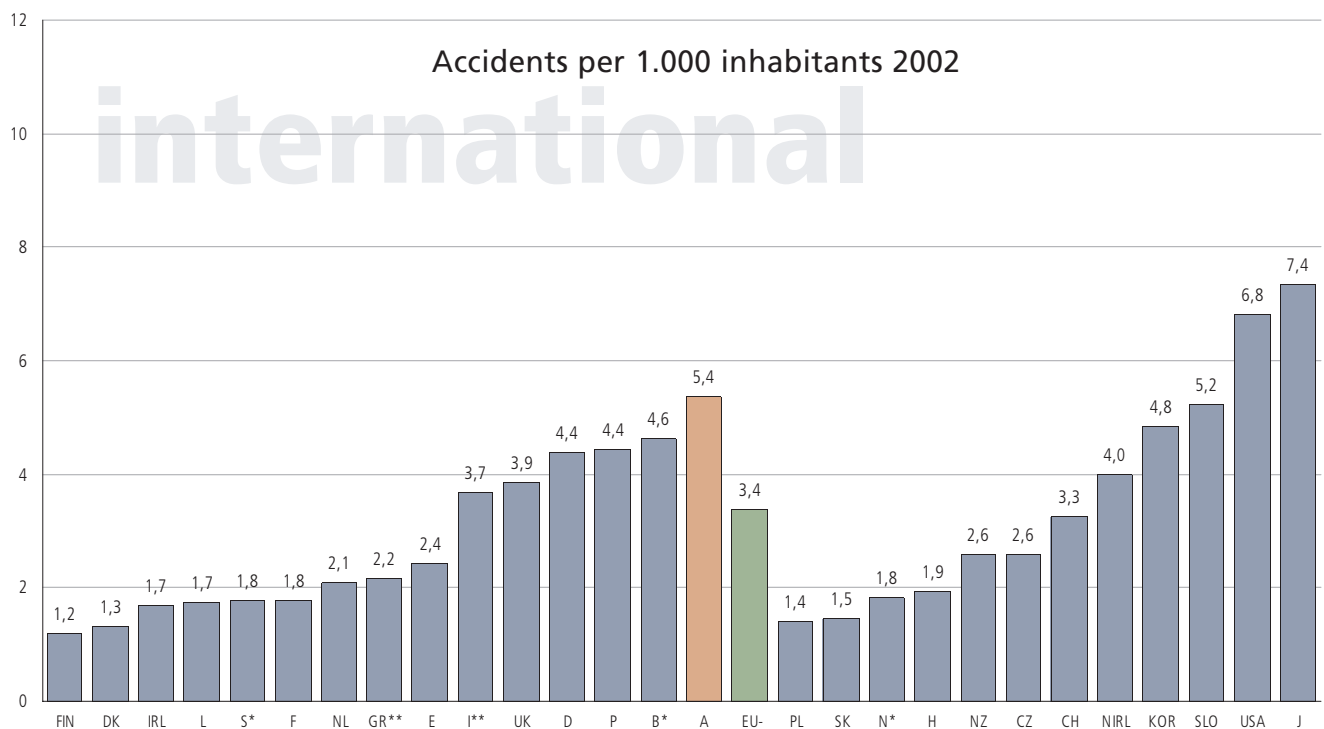


Table: Accidents, injuries and fatalities 2001–2002

	Accidents with personal injury		Injuries		Fatalities		Fatalities per 1 mill. inhabitants	
	2001	2002	2001	2002	2001	2002	2001	2002
A	43.073	43.175	56.265	56.684	958	956	119	119
B	47.444	-	65.294	-	1.486	-	145	-
D	375.345	362.054	494.775	476.413	6.977	6.842	85	83
DK	6.861	7.126	8.463	8.791	431	463	81	86
E	100.393	98.433	149.599	146.917	5.517	5.347	138	132
F	116.745	105.470	153.945	137.839	8.160	7.655	138	129
FIN	6.451	6.196	8.411	8.156	433	415	84	80
GR*	23.127	-	30.803	-	2.088	-	196	-
I*	211.941	-	301.559	-	6.410	-	111	-
IRL	6.909	6.625	10.222	9.206	411	376	107	96
L	774	771	1.176	1.100	70	62	159	140
NL	35.313	33.538	42.810	40.682	993	987	62	61
P	42.521	42.219	57.044	56.585	1.671	1.675	176	-
S	15.767	-	22.327	24.742	554	532	62	60
UK	236.461	228.535	322.853	310.938	3.598	3.581	61	60
EU-15	1.269.125	-	1.725.546	-	39.757	-	106	-
CH	23.896	23.647	30.160	29.774	544	513	76	71
CZ	26.027	26.586	33.676	34.389	1.334	1.431	130	139
H	18.505	19.686	24.149	25.978	1.239	1.429	121	140
J	947.169	936.721	1.179.642	1.166.606	10.060	9.575	79	75
KOR	260.579	230.953	386.539	348.184	8.097	7.090	171	149
N	8.244	-	11.522	-	275	-	61	-
NZ	8.865	10.162	12.368	13.918	455	404	118	103
PL	53.799	53.559	68.195	67.498	5.534	5.827	143	152
SK	8.181	7.866	10.839	10.263	614	610	114	113
SLO	9.199	10.266	12.666	14.032	278	269	139	137
USA	2.041.000	1.967.000	-	-	42.196	42.815	148	148

Source: IRTAD, 2004

*) Data 2001
**) Data 2000

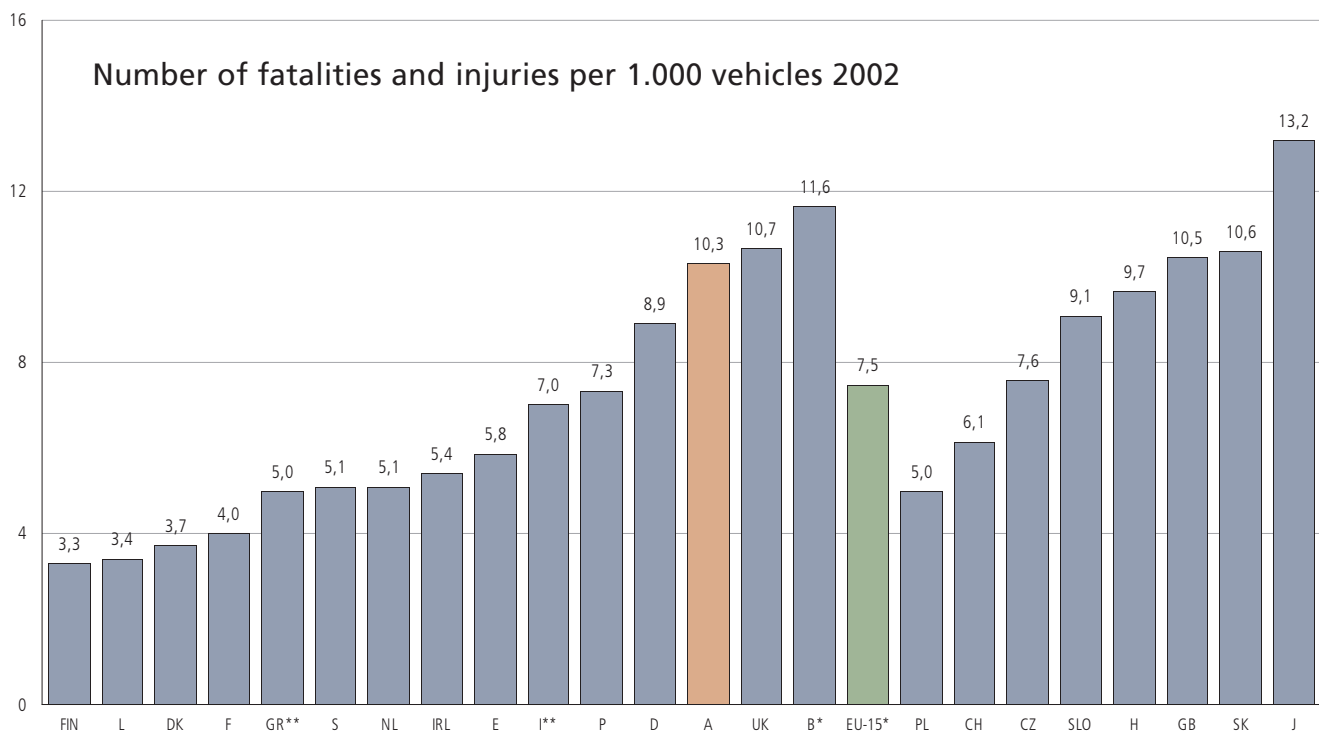


Table: Casualties in thousands 1970 - 2002

	1970	1975	1980	1985	1990	1995	1999	2000	2001	2002
A	72,7	68,3	64,4	61,3	62,0	52,0	56,0	55,9	57,2	57,6
B	107,8	84,5	84,7	76,3	88,2	71,8	72,5	69,4	66,8	-
D	599,4	521,8	556,0	471,5	522,0	521,6	528,9	511,6	501,8	483,3
DK	26,7	20,9	15,8	14,6	11,3	10,6	9,9	9,6	8,9	9,3
E	90,7	97,8	112,7	131,7	162,4	127,2	148,6	155,6	155,1	152,3
F	344,7	366,9	352,2	281,2	236,1	189,8	176,1	169,8	162,1	145,1
FIN	-	-	9,0	10,1	13,4	10,6	9,5	8,9	8,8	8,6
GR	25,7	23,3	26,7	32,2	29,1	33,2	-	32,9	32,9	-
I	238,4	239,4	231,4	223,2	227,6	266,1	-	308,0	308,0	-
IRL	9,8	7,8	9,1	8,2	9,9	13,1	12,8	12,5	10,6	9,6
L	2,5	2,9	2,4	2,1	1,8	1,4	1,6	1,3	1,2	1,2
NL	71,4	62,3	58,6	50,0	53,2	52,0	52,2	47,2	43,8	41,7
P	30,3	43,3	43,4	41,4	65,7	67,9	67,3	61,6	58,7	58,1
S	23,5	22,0	20,1	21,5	23,3	21,7	22,5	22,6	22,9	25,3
UK	371,5	332,6	335,9	326,2	352,9	322,2	333,8	335,0	326,5	314,5
EU-15	-	-	1.922,1	1.751,5	1.858,9	1.761,3	-	1.801,7	1.765,3	-
CH	37,7	31,2	33,6	30,7	30,2	29,5	30,1	30,7	30,7	30,3
CZ	-	-	-	-	-	-	36,2	33,9	35,0	35,8
H	32,0	27,7	25,5	26,6	39,4	27,5	26,0	23,9	25,4	27,4
J	997,9	633,3	607,5	690,6	801,5	933,4	1.059,4	1.164,8	-	1.176,2
N	-	-	10,6	12,3	12,2	12,1	11,8	-	11,8	-
PL	-	-	-	-	66,9	77,1	75,2	77,9	73,7	73,3
SK	-	-	-	-	11,3	12,2	12,1	10,7	11,5	10,9
SLO	-	-	-	-	-	8,4	9,3	11,9	-	14,3
USA	2.810,7	2.852,8	3.085,9	3.384,2	3.644,8	3.654,9	-	-	-	-

Source: IRTAD, 2004

*) Data 2001

**) Data 2000

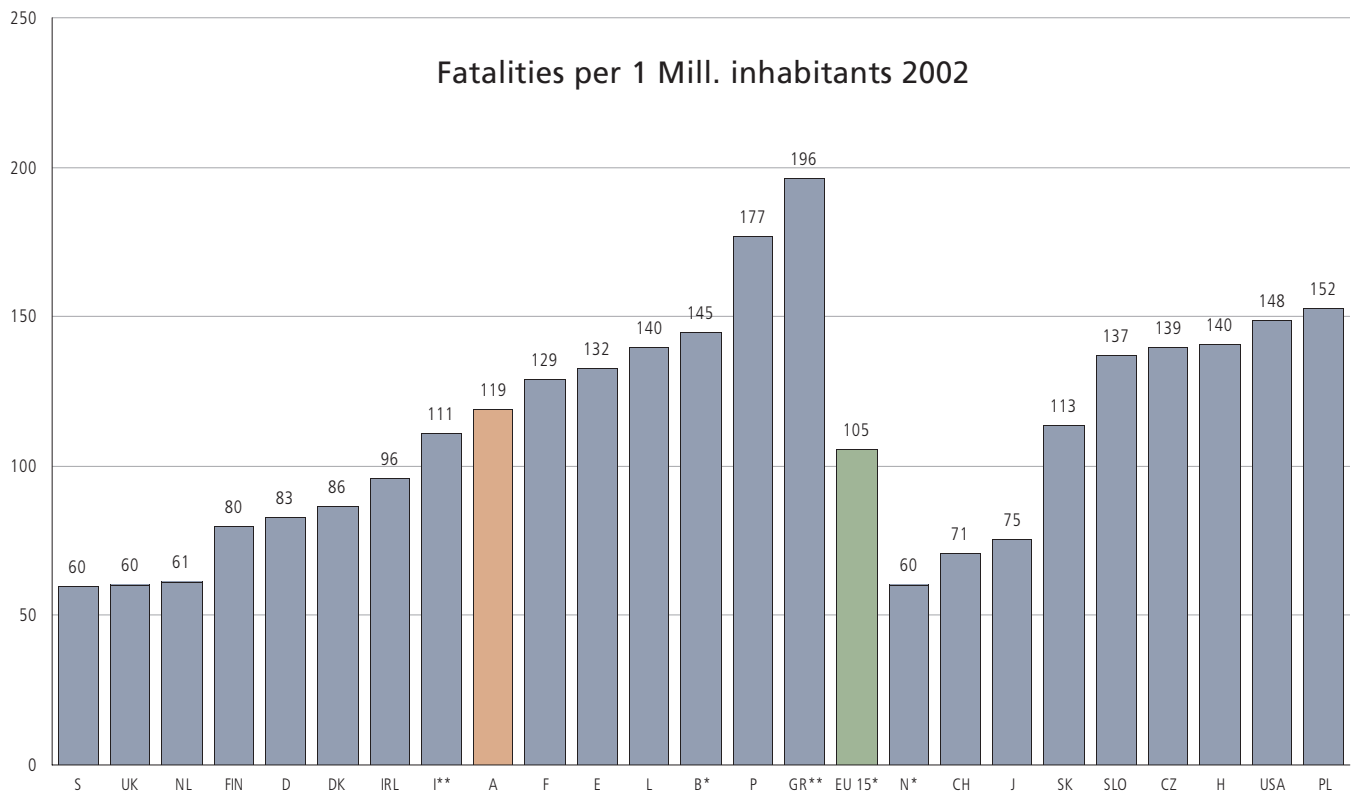


Table: Fatalities 1970–2002

	1970	1975	1980	1985	1990	1995	1999	2000	2001	2002
A	2.574	2.533	2.003	1.524	1.558	1.210	1.079	976	958	956
B	3.070	2.346	2.396	1.801	1.976	1.449	1.397	1.470	1.486	-
D	21.653	17.332	15.050	10.070	11.046	9.454	7.772	7.503	6.977	6.842
DK	1.208	827	690	772	634	582	514	498	431	463
E	5.456	5.833	6.522	6.374	9.032	5.751	5.738	5.776	5.517	5.347
F	16.445	14.355	13.672	11.387	11.215	8.891	8.487	8.079	8.160	7.655
FIN	1.055	910	551	541	649	441	431	396	433	415
GR	1.071	1.219	1.409	1.960	1.998	2.349	2.116	2.088	-	-
I	11.025	10.272	9.220	7.700	7.151	7.033	6.633	6.410	-	-
IRL	540	586	564	410	478	437	413	415	411	376
L	132	124	98	79	70	68	58	76	70	62
NL	3.181	2.321	1.996	1.438	1.376	1.334	1.090	1.082	993	987
P	1.842	3.479	2.941	2.437	3.017	2.710	1.995	1.857	1.671	1.675
S	1.307	1.172	848	808	772	572	580	591	554	532
UK	7.771	6.679	6.239	5.342	5.402	3.765	3.564	3.580	3.598	3.581
EU 15	78.330	69.988	64.199	52.643	56.374	46.046	41.867	40.797	-	-
CH	1.643	1.206	1.209	881	925	692	583	592	544	513
CZ	1.983	1.632	1.261	987	1.291	1.588	1.455	1.486	1.334	1.431
H	1.627	1.678	1.630	1.756	2.432	1.589	1.306	1.200	1.239	1.429
J	21.794	14.030	11.388	12.039	14.595	12.670	10.372	10.403	10.060	9.575
N	560	539	362	402	332	305	304	341	275	-
PL	3.446	5.633	6.002	4.688	7.333	6.900	6.730	6.294	5.534	5.827
SK	-	-	-	-	662	660	647	628	614	610
SLO	-	-	-	-	-	415	334	313	278	269
USA	52.627	44.522	51.091	43.825	44.529	41.798	41.611	41.821	42.196	42.815

Source: IRTAD, 2004

*) Data 2001
**) Data 2000

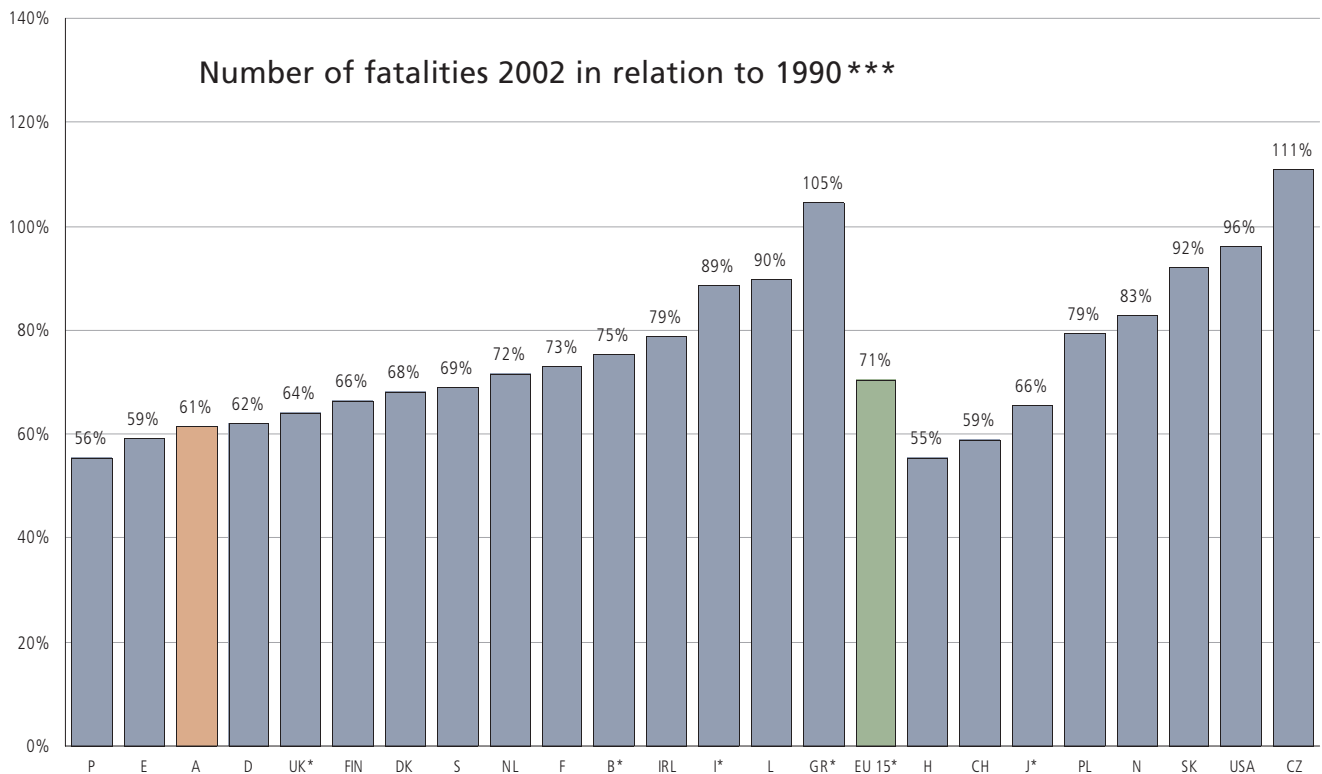


Table: Fatalities by age (per 1 Mill. inhabitants per age group) 2002

	0-5	6-9	10-14	15-17	18-20	21-24	25-34	35-44	45-54	55-59	60-64	>64
A	18	16	21	150	273	243	120	111	105	117	111	170
B*	29	43	36	129	285	341	214	153	115	110	102	153
D	14	13	23	115	273	204	94	77	70	69	55	88
DK	15	7	19	151	220	151	115	70	66	79	73	130
E	20	21	33	125	237	226	171	134	122	122	119	120
F	24	16	29	134	338	280	182	126	105	104	87	139
FIN	17	15	25	78	214	115	80	69	81	67	66	126
GR**	26	22	26	149	-	350	251	191	172	144	163	234
I**	11	13	20	104	234	234	-	-	84	85	88	127
IRL	21	19	24	102	170	176	135	67	54	86	104	138
L**	29	45	40	71	357	550	309	115	145	0	0	172
NL	7	5	25	108	169	142	77	44	45	42	37	97
P	27	40	56	162	277	277	227	193	157	147	159	204
S	7	11	15	63	162	123	73	53	46	58	62	79
UK	11	11	21	85	166	125	80	60	46	39	43	69
EU-15	16	15	25	114	251	217	111	82	85	82	77	115
CH	23	21	7	55	217	145	75	62	60	48	97	94
CZ	28	27	29	82	214	196	188	160	135	167	120	149
H	41	33	21	64	125	185	169	187	171	145	158	149
J	14	23	12	81	128	87	56	43	57	67	84	158
KOR	60	54	26	74	107	126	122	137	183	210	306	414
N*	8	8	6	85	149	140	75	55	44	42	35	99
NIRL	22	31	38	134	270	241	105	60	54	43	80	114

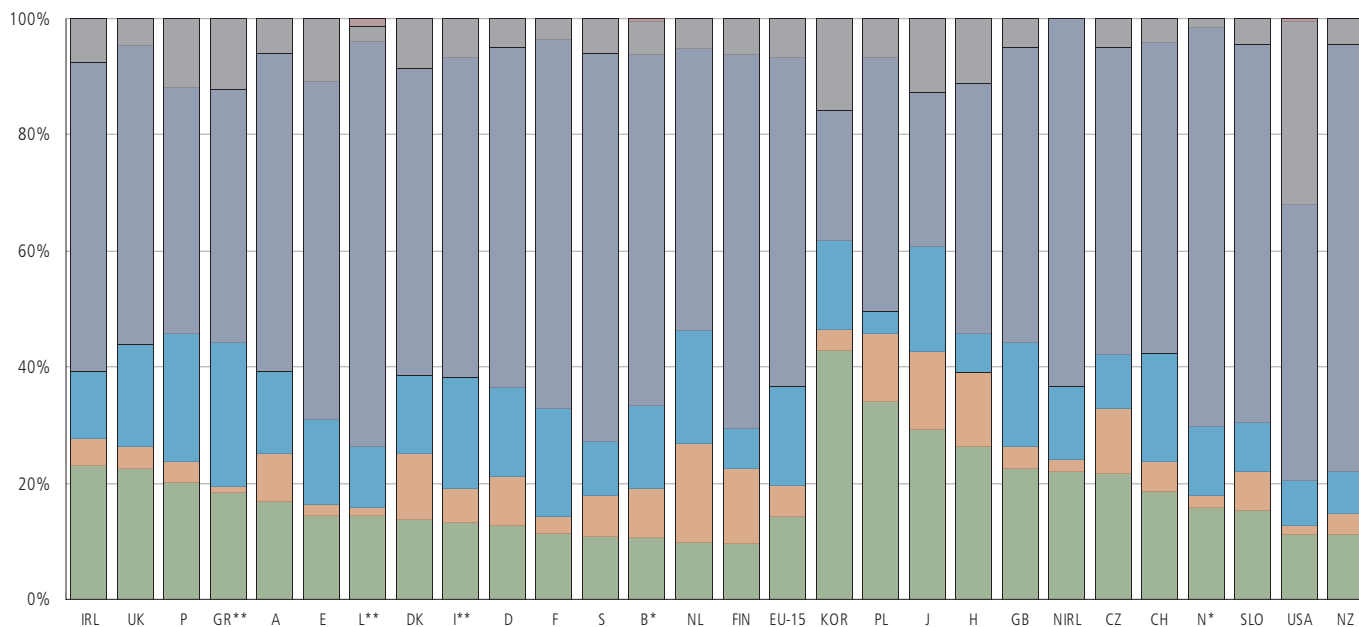
Source: IRTAD, 2004

*) Data 2001

**) Data 2000

***) Index: 1990=100%

Fatalities by participation 2002, sorted by fraction of pedestrians



- Unknown
- Other motor vehicles
- Passenger Cars
- Power two-wheelers
- Cyclists
- Pedestrians

Table: Fatalities by participation in traffic 2002

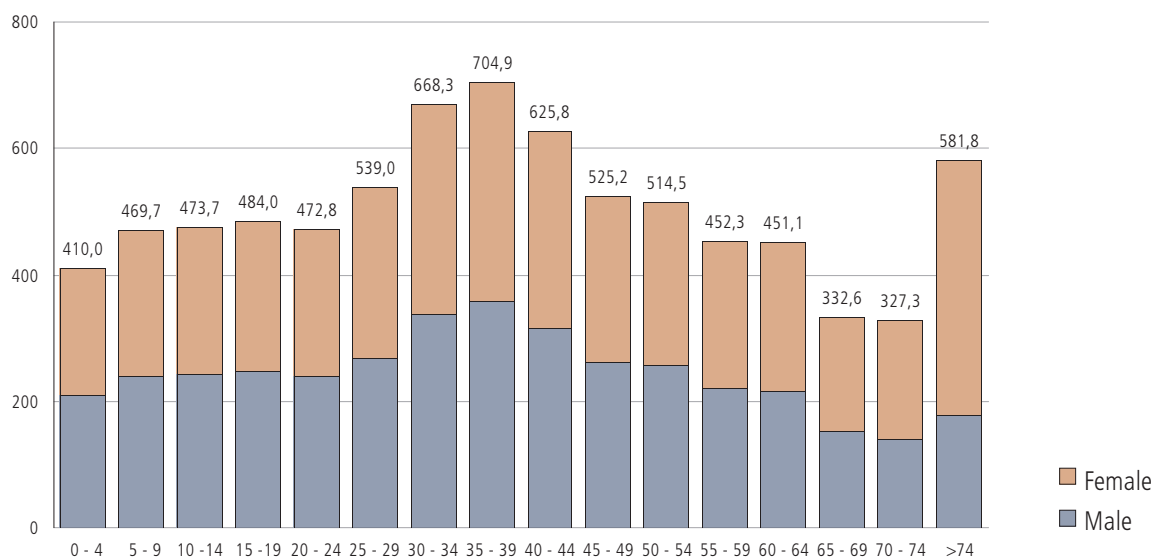
	Pedestrians	Cyclists	Powered two-wheelers	Cars	Other vehicles	Unknown participation	Total
A	160	80	135	524	57	0	956
B*	158	128	210	899	85	6	1.486
D	873	583	1.044	4.005	337	0	6.842
DK	64	52	62	246	39	0	463
E	776	96	784	3.105	586	0	5.347
F	866	223	1.415	4.864	286	0	7.655
FIN	40	53	29	267	26	0	415
GR**	375	22	502	891	245	2	2.037
I**	848	371	1.229	3.535	427	0	6.410
IRL	86	18	44	200	28	0	376
L**	11	1	8	53	2	1	76
NL	97	169	191	479	51	0	987
P	339	58	369	710	198	0	1.675
S	58	37	49	357	31	0	532
UK	808	133	628	1.842	170	0	3.581
EU-15	5.554	2.023	6.691	21.924	2.566	8	38.824
CH	96	26	96	274	21	0	513
CZ	309	160	134	759	69	0	1.431
GB	775	130	609	1.747	170	0	3.431
H	377	182	93	618	159	0	1.429
J	2.784	1.305	1.721	2.562	1.203	0	9.575
KOR	3.048	245	1.087	1.590	1.120	0	7.090
N*	43	6	33	189	4	0	275
NIRL	33	3	19	95	0	0	150
NZ	45	14	30	297	18	0	404
PL	1.987	681	226	2.548	385	0	5.827
SLO	41	18	23	175	12	0	269
USA	4.808	662	3.244	20.416	13.446	239	42.815

Source: IRTAD, 2004

*) Data from 2001
**) Data from 2000

statistical parameters

Population by age group (in 1.000)



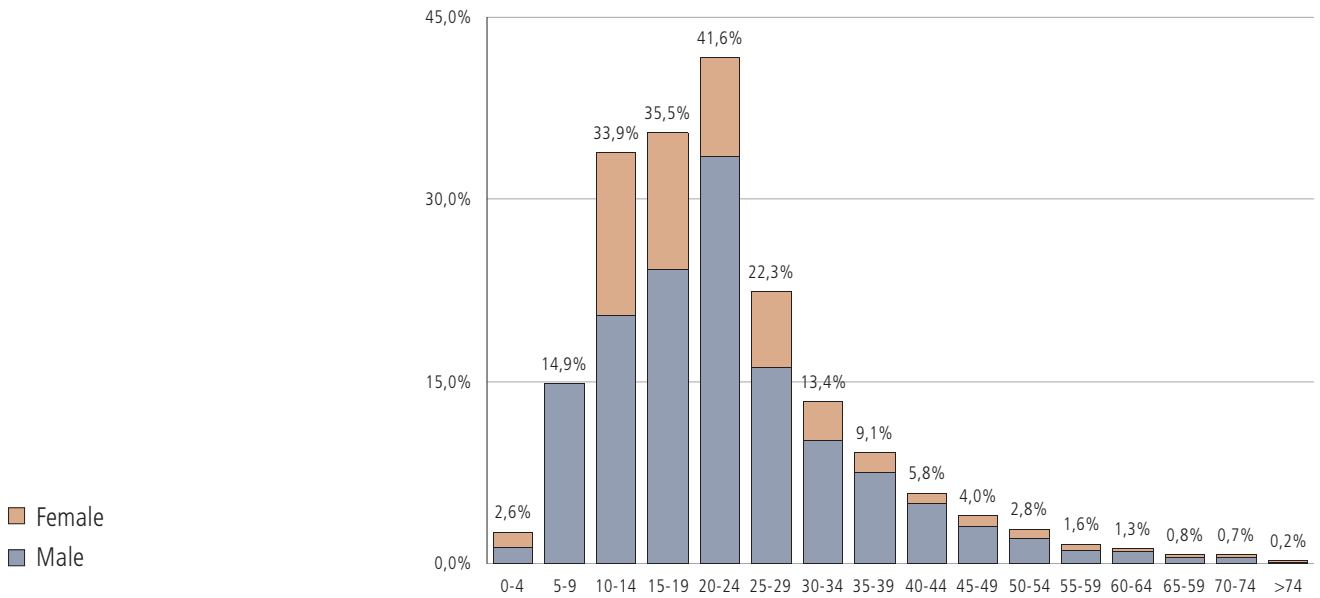
Source: STATISTIK AUSTRIA, 2003; Volkszählung 2001

Table: Total number of deceased and number of people killed in road accidents by age group

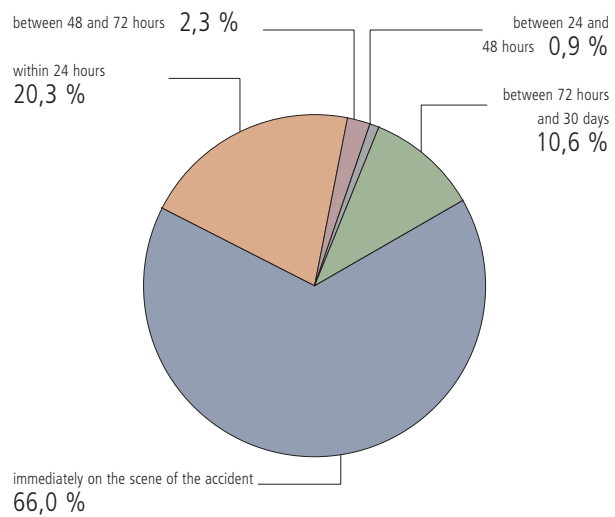
Age group.	0-4	5-9	10-14	15-19	20-24	25-29	30-34	35-39	40-44	45-49	50-54	55-59	60-64	65-69	70-74	>74	Summe
All deceased in Austria 2003																	
Male	28	31	30	179	232	244	303	460	719	943	1.527	1.997	2.938	3.119	4.892	17.324	35.166
Female	53	16	29	69	73	83	122	240	360	489	731	1.003	1.444	1.782	3.238	31.133	40.965
Gesamt	381	47	59	248	305	327	425	700	1.079	1.432	2.258	3.000	4.382	4.901	8.130	48.457	76.131

Age group	0-4	5-9	10-14	15-19	20-24	25-29	30-34	35-39	40-44	45-49	50-54	55-59	60-64	65-69	70-74	>74	Summe
Fatalities related to road accidents																	
Male	5	7	12	60	102	53	43	53	53	45	48	35	43	23	43	55	680
Female	5	0	8	28	25	20	14	11	10	12	15	13	13	14	15	48	251
Gesamt	10	7	20	88	127	73	57	64	63	57	63	48	56	37	58	103	931

Percentage of fatalities in road accidents and all deceased by age

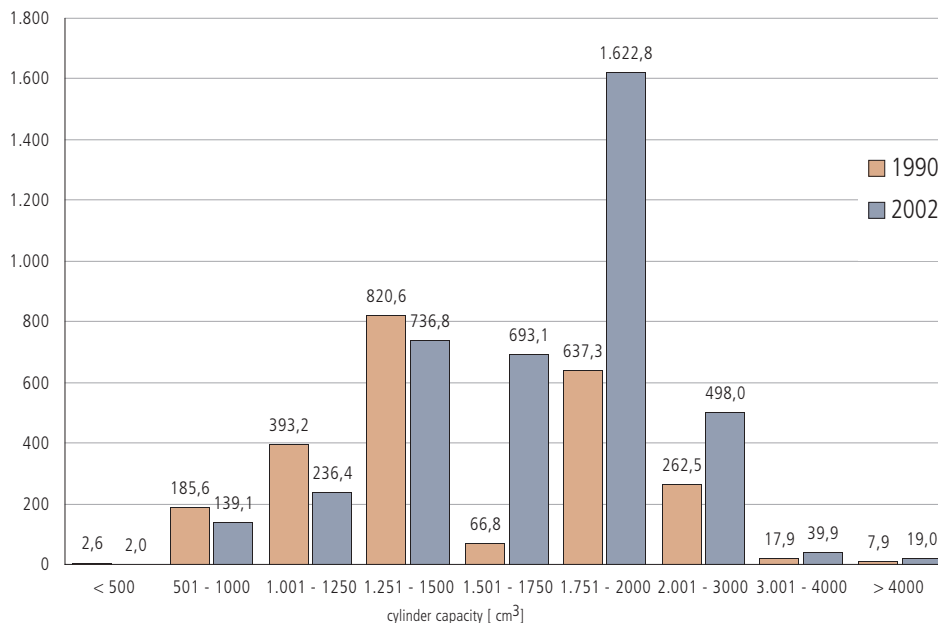


Number of fatalities in road accidents by timespan between accident and death



STATISTICAL PARAMETERS

Cars in 1.000 by cylinder capacity 1990 and 2002



Diesel versus petrol 2002

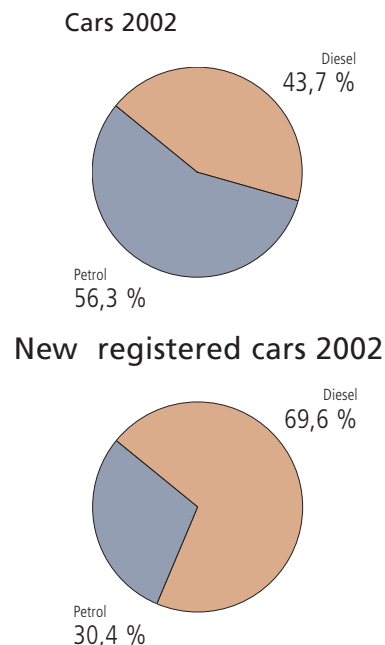


Table: Passenger cars in thousands and new registrations 2002 by cylinder capacity

Cylinder capacity [cm³]	Passenger cars		New registered passenger cars		
	Total [1.000]	Total	Fraction [%]	Difference to 2001 [%]	
< 500	2,0	k.A	k.A	-	
501 - 1.000	139,1	7.152	2,6	-33,9	
1.001 - 1.250	236,4	19.661	7,0	17,6	
1.251 - 1.500	736,8	37.066	13,3	-3,4	
1.501 - 1.750	693,1	21.379	7,6	-8,3	
1.751 - 2.000	1.622,8	150.044	53,7	-6,1	
2.001 - 3.000	498,0	39.863	14,3	0,1	
3.001 - 4.000	39,9	2.698	1,0	-12,7	
>4.000	19,0	1.629	0,6	4,2	
> Electro	0,1	1	0,0	-80,0	
TOTAL	3.987,1	279.493	100,0	-4,8	

Source: STATISTIK AUSTRIA, 2004

International statistical parameters

Table: International statistical parameters 2002

	Inhabitants	Area	Density	Road network		Cars		Kilometers traveled	
	[1.000]	[qkm]	[Inh./sqkm]	[km]	[km/sqkm]	in 1.000	per 1.000 Inh.	per Car [km]	[Mill. Car-km]
A	8.033	83.850	96	106.585	1,3	4.182	520,6	13.863,9	57.979
B	10.263*	32.545	315	149.018	4,6	4.740*	461,9	16.452,7	77.986
D	82.440	357.039	231	626.248	1,8	44.383	538,4	11.474,5	509.273
DK	5.368	43.069	125	71.951	1,7	1.873	348,9	19.814,2	37.112*
E	40.409	504.750	80	664.852*	1,3	18.733	463,6	-	-
F	59.344	551.208	108	996.118	1,8	28.700	483,6	-	-
FIN	5.195	338.145	15	78.954	0,2	2.161	416,0	19.285,1	41.675
GR	10.554**	131.944	80	-	-	3.195**	302,7	-	-
I	57.844**	301.260	192	-	-	32.584**	563,3	-	-
IRL	3.917	70.823	55	95.752*	1,4	1.448	369,7	20.745,2	30.039*
L	444	2.586	172	2.875	1,1	-	-	-	-
NL	16.105	41.526	388	117.430***	2,8	6.855	425,6	14.722,8	100.925**
P	9.490***	92.631	102	-	-	5.788	609,9	-	-
S	8.909	449.964	20	212.000	0,5	4.019	451,1	-	-
UK	59.208	244.046	243	-	-	25.776*	435,3	-	-
EU-15	377.523	3.245.386	116	-	-	-	-	-	-
AUS	19.663	7.692.024	3	900.000*	0,1	10.137	515,5	14.272,1	144.676
CDN	31.414	9.984.670	3	1.420.100*	0,1	14.458*	460,2	20.080,2	290.320
CH	7.261	41.293	176	-	-	3.701	509,7	13.985,7	51.761
CZ	10.270	78.860	130	55.428	0,7	3.530	343,7	9.059,5	31.980**
GB	57.511	229.334	251	391.701**	1,7	25.126*	436,9	15.617,3	392.400
H	10.175	93.033	109	135.555	1,5	2.483	244,0	-	-
J	127.435	377.864	337	1.171.647*	3,1	54.541	428,0	9.651,9	526.422*
KOR	47.640	99.538	479	91.396	0,9	8.889	186,6	21.538,9	191.459
N	4.552	323.873	14	91.852	0,3	1.900	417,4	14.471,1	27.495*
NIRL	1.697	14.163	120	-	-	671	395,4	-	-
NZ	3.939	269.122	15	92.381	0,3	-	-	-	-
PL	38.219	322.577	118	372.338	1,2	11.028	288,5	-	-
SK	5.379	49.035	110	17.755	0,4	1.293	240,4	-	-
SLO	1.964	20.273	97	20.250	1,0	899	457,7	12.067,9	10.849
USA	288.369	9.363.353	31	6.383.439	0,7	129.907	450,5	19.626,7	2.549.641*

Source: IRTAD, 2004

*) Data 2001
 **) Data 2000
 ***) Data 1999

Car passengers using seat belts 2003

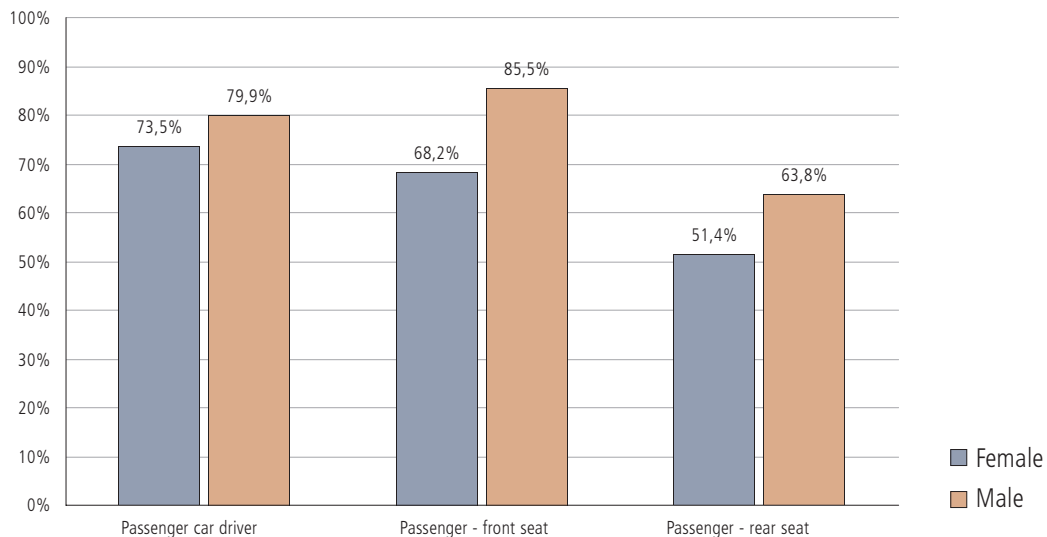


Table: Car Passengers using seat belts by sex 2003

	Drivers [%]		Passenger - front seat [%]		Passenger - rear seat[%]	
	Male	Female	Male	Female	Male	Female
Inside urban area	68,9	77,0	63,4	85,0	51,7	58,7
Outside urban area	73,8	80,8	64,8	82,7	55,8	67,3
Motorway	79,3	83,9	76,6	88,5	47,5	66,4
Total	73,5	79,9	68,2	85,5	51,4	63,8

Source: Calculated by KfV

Front passengers using seat belts

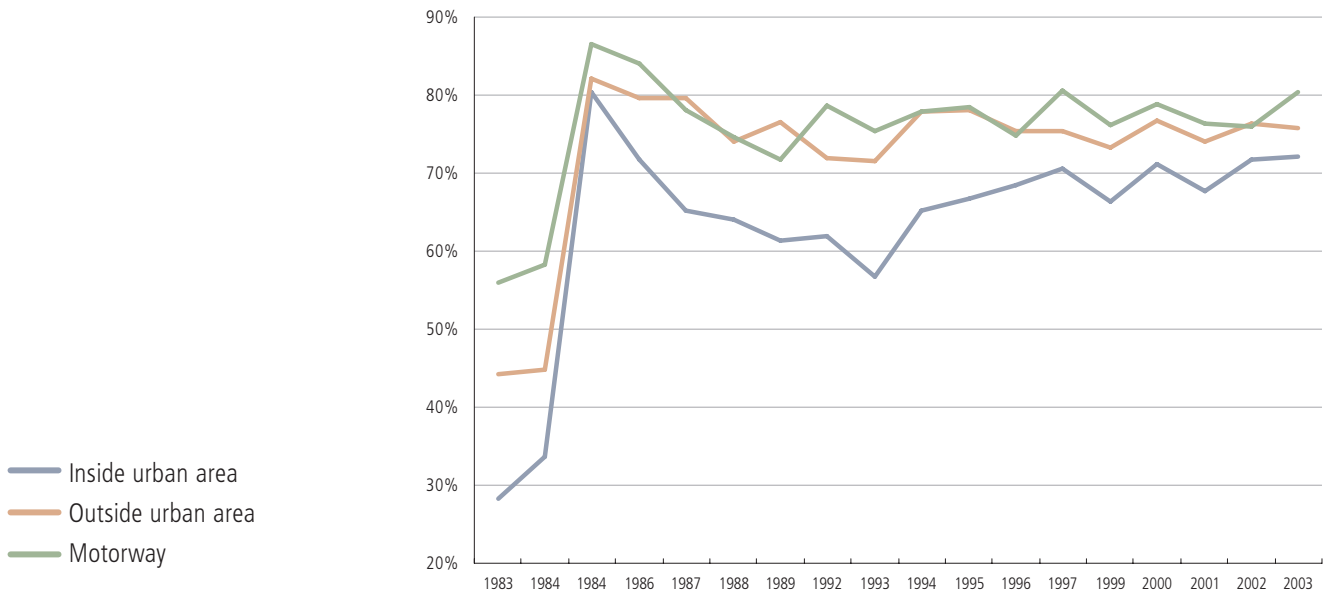
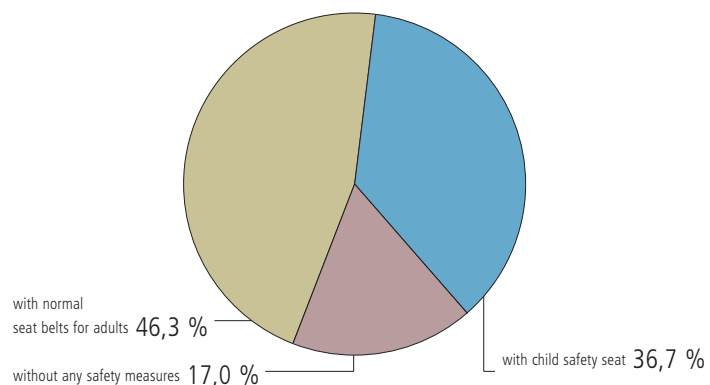


Table: Use of seat belts in passenger cars in front seats [%] 1983–2003

	1983	1984*	1984**	1987	1989	1992	1993	1994	1995	1996	1997	1998	1999	2000	2001	2002	2003
Inside urban a.	28,2	33,7	80,3	65,2	61,4	62,0	56,7	65,2	66,8	68,4	70,5	70,1	66,4	71,2	67,7	72,5	73,0
Outside urban a.	44,3	44,9	82,1	79,7	76,6	71,9	71,5	77,9	78,1	75,3	75,3	76,4	73,3	76,7	74,1	76,7	76,3
Motorway	55,9	58,3	86,6	78,1	71,8	78,6	75,3	77,9	78,5	74,8	80,5	77,5	76,1	78,9	76,3	76,8	81,6

Source: Calculations made by KfV

Use of safety measures for child safety features in passenger cars



*) before 1.7.1984 - Introduction of obligatory seat belt use with subpoena

***) after 1.7.1984 - Introduction of obligatory seat belt use with subpoena

Child safety features in cars 1997–2003 (child safety seat or seat belt)

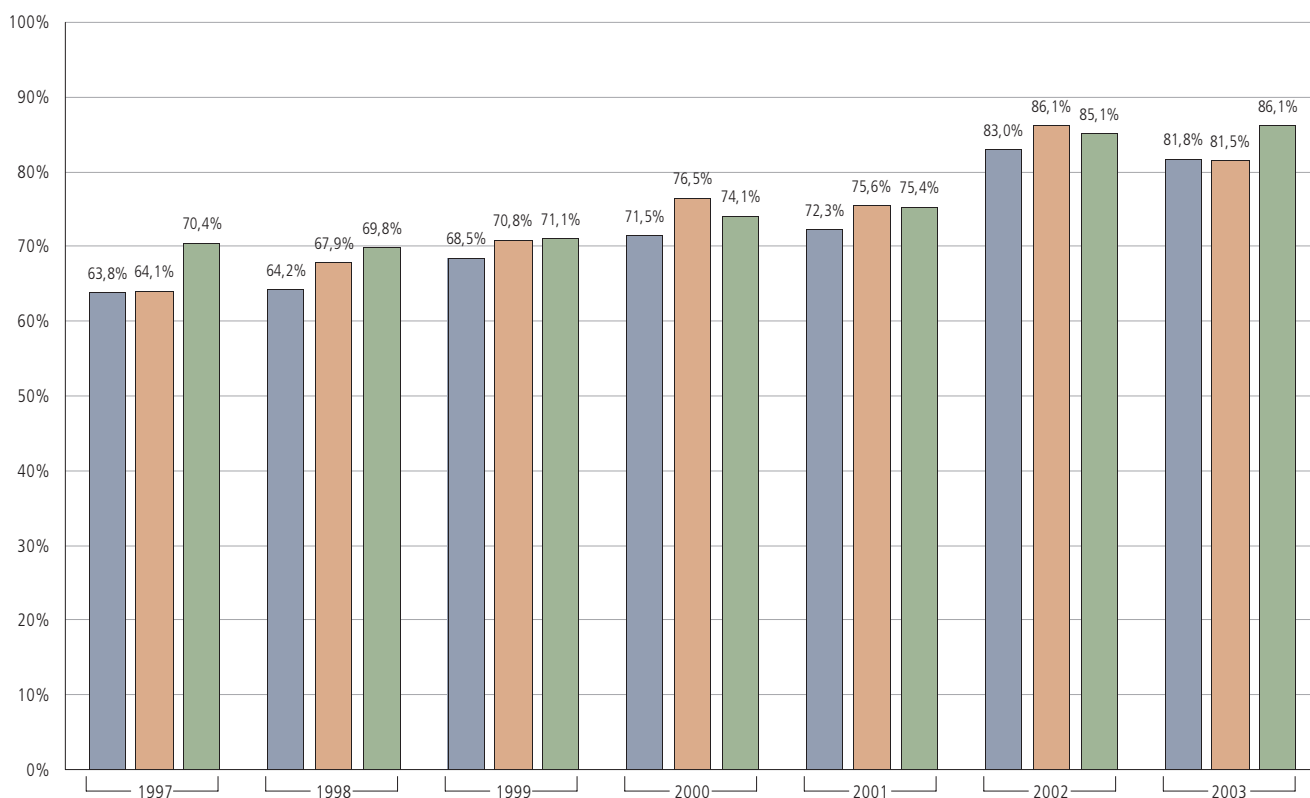


Table: Use of child safety seats in passenger cars 1997–2003

	1997	1998	1999	2000	2001	2002	2003
Inside urban area	63,8	64,2	68,5	71,5	72,3	83,0	81,8
Outside urban area	64,1	67,9	70,8	76,5	75,6	86,1	81,5
Motorway	70,4	69,8	71,1	74,1	75,4	85,1	86,1

Source: Calculations made by KfV

- Inside urban area
- Outside urban area
- Motorway

Rail and road accidents - Comparison of transport risks

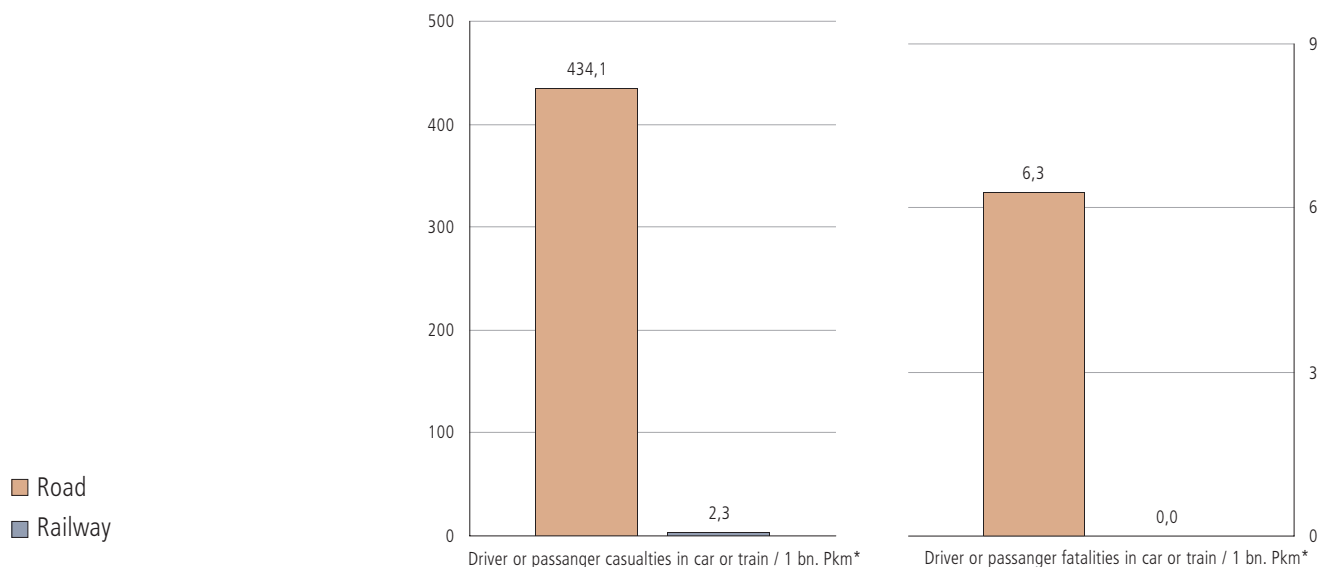


Table: Rail and road accidents

Accident Data	Rail	Road
Accidents with damage to persons	76	43.426
Casualties	79	57.812
Fatalities	31	931
Driver or passenger injuries and fatalities in car or train	19	36.244
Fatalities	0	524
Severe injuries	2	3.402
Slight injuries	17	27.966
Severity of injury unknown	0	4.352
Density of accidents / 1.000 km net-length		
Accidents	14	407
Casualties	14	542
Driver or passenger injuries and fatalities in car or train	3	340
Fatalities	6	9
Driver or passenger fatalities in car or train	0	5

Quelle: Österreichische Bundesbahnen, Abt. Netz – Betrieb – Sicherheit

*) Personenkilometer

book series: "Verkehr in Österreich"

These books have been published by the "Austrian Safety and Prevention Board" in co-operation with "Allgemeine Unfallversicherungsanstalt (AUVA)":

- Heft 1: **UNFALLSTATISTIK 1987** ; GRAF P., ESBERGER R. & G. DENDZIG; Wien 1988
- Heft 2: **PROBLEM WEGUNFÄLLE** ; KfV – Verkehrspsychologisches Institut, Institut für Verkehrs- und Fahrzeugtechnik; Wien 1988
- Heft 3: **DAS UNFALLGESCHEHEN IN ÖSTERREICHS GEMEINDEN 1988** ; KfV – Institut für Verkehrstechnik und Unfallstatistik; Wien 1989
- Heft 4: **VERKEHRSBERUHIGUNG – SICHERHEIT ODER ÄRGERNIS?** ; HENÖKL H.; Tagungsbericht vom 15. Dezember 1988 in Graz; Wien 1989
- Heft 5: **UNFALLSTATISTIK 1988** ; KfV – Institut für Verkehrstechnik und Unfallstatistik; Wien 1989
- Heft 6: **DAS UNFALLGESCHEHEN IN ÖSTERREICHS GEMEINDEN 1989** ; KfV – Institut für Verkehrstechnik und Unfallstatistik; Wien 1990
- Heft 7: **UNFALLSTATISTIK 1989** ; KfV – Institut für Verkehrstechnik und Unfallstatistik; Wien 1990
- Heft 8: **DAS UNFALLGESCHEHEN IN ÖSTERREICHS GEMEINDEN 1990** ; KfV – Institut für Verkehrstechnik und Unfallstatistik; Wien 1991
- Heft 9: **UNFALLSTATISTIK 1990** ; KfV – Institut für Verkehrstechnik und Unfallstatistik; Wien 1991
- Heft 10: **OFFENE GRENZEN – GESCHLOSSENE KOLONNEN?** Verkehrs(sicherheits)probleme und Lösungsansätze angesichts der Öffnung der Ostgrenzen. Symposium im Wiener Rathaus vom 22.–23. Oktober 1990, Tagungsbericht, KfV; Wien 1991
- Heft 11: **UNFALLSTATISTIK 1991** ; KfV – Institut für Verkehrstechnik und Unfallstatistik; Wien 1992
- Heft 12: **DAS UNFALLGESCHEHEN IN ÖSTERREICHS GEMEINDEN 1991** ; KfV – Institut für Verkehrstechnik und Unfallstatistik; Wien 1992
- Heft 13: **UNFALLSTATISTIK 1992** (ergänzt durch die Landes-Unfallstatistik der Bundesländer)
KfV – Institut für Verkehrstechnik und Unfallstatistik; Wien 1993
- Heft 14: **DAS UNFALLGESCHEHEN IN ÖSTERREICHS GEMEINDEN 1992** ; KfV – Institut für Verkehrstechnik und Unfallstatistik; Wien 1993
- Heft 15: **UNFALLSTATISTIK 1993** (ergänzt durch die Landes-Unfallstatistik der Bundesländer)
KfV – Institut für Verkehrstechnik und Unfallstatistik; Wien 1994
- Heft 16: **DAS UNFALLGESCHEHEN IN ÖSTERREICHS GEMEINDEN 1993** ; KfV – Institut für Verkehrstechnik und Unfallstatistik; Wien 1994
- Heft 17: **UNFALLSTATISTIK 1994** (ergänzt durch die Landes-Unfallstatistik der Bundesländer)
KfV – Institut für Verkehrstechnik und Unfallstatistik; Wien 1995
- Heft 18: **DAS UNFALLGESCHEHEN IN ÖSTERREICHS GEMEINDEN 1994** ; KfV – Institut für Verkehrstechnik und Unfallstatistik; Wien 1995
- Heft 19: **UNFALLSTATISTIK 1995** (ergänzt durch die Landes-Unfallstatistik der Bundesländer)
KfV – Institut für Verkehrstechnik und Unfallstatistik; Wien 1996
- Heft 20: **INLINE-SKATEN**. Erhebungen, Analyse und Maßnahmenvorschläge. ; ROBATSCH K., SCHRAMMEL E., KRÄUTLER C. & E. FRANZL; Wien 1996

- Heft 21: **FAHRLEISTUNGEN.** Untersuchungen über Kfz-Fahrleistungen in Österreich, Deutschland und der Schweiz im Überblick. RISSER A.; Wien 1996
- Heft 22: **UNFALLSTATISTIK 1996** (ergänzt durch die Landes-Unfallstatistik der Bundesländer)
KfV – Institut für Verkehrstechnik und Unfallstatistik; Wien 1997
- Heft 23: **QUANTITATIVE INDIKATOREN DER STRASSENVERKEHRSSICHERHEIT IN DER BUNDESREPUBLIK DEUTSCHLAND 1975–1995.** CERWANKA P. & G. HAUGER; Wien 1997
- Heft 24: **UNFALLSTATISTIK 1997** (ergänzt durch die Landes-Unfallstatistik der Bundesländer)
KfV – Institut für Verkehrstechnik und Unfallstatistik; Wien 1998
- Heft 25: **EFFIZIENZUNTERSUCHUNG DER LKW-ÜBERHOLVERBOTE 7,5T AUF AUTOBAHNEN IN NIEDERÖSTERREICH.** TRIMMEL P.; St. Pölten 1998
- Heft 26: **UNFALLSTATISTIK 1998** (ergänzt durch die Landes-Unfallstatistik der Bundesländer)
KfV – Institut für Verkehrstechnik und Unfallstatistik; Wien 1999
- Heft 27: **UNFALLSTATISTIK 1999** (ergänzt durch die Landes-Unfallstatistik der Bundesländer)
KfV – Institut für Verkehrstechnik und Unfallstatistik; Wien 2000
- Heft 28: **SICHERHEIT FÜR KINDER IM STRASSENVERKEHR.** Eine Aktion des Bundeslandes Niederösterreich. TRIMMEL P., KLEMENJAK W. & E. KREINER.; St. Pölten 1999
- Heft 29: **AUSWIRKUNGEN VON „BLINKENDEN GEFAHRENZEICHEN“ ANHAND DES GESCHWINDIGKEITSVERHALTENS DER KRAFTFAHRER.**
TRIMMEL P.; St. Pölten 2000
- Heft 30: **SICHERHEITSVERHALTEN VON MOTORISIERTEN VERKEHRSTEILNEHMERN – ERHEBUNGEN UND MESSUNGEN 1999 ;** WANNENMACHER E., TEUFELSBRUCKER D., MACHATA K. & E. SCHRAMMEL; Wien 2000
- Heft 31: **UNFALLSTATISTIK 2000** (ergänzt durch die Landes-Unfallstatistik der Bundesländer)
KfV – Institut für Verkehrstechnik und Unfallstatistik; Wien 2001
- Heft 32: **UNFALLSTATISTIK 2001 ;** KfV – Institut für Verkehrstechnik und Unfallstatistik; Wien 2002
- Heft 33: **GESCHWINDIGKEITSVERHALTEN VON MOTORISIERTEN VERKEHRSTEILNEHMERN - MESSUNGEN 2000/2001 ;** WANNENMACHER E., TEUFELSBRUCKER D. & E. SCHRAMMEL
KfV – Institut für Verkehrstechnik; Wien 2002
- Heft 34: **UNFALLSTATISTIK 2002 ;** KfV – Institut für Unfallstatistik; Wien 2003
- Heft 35: **VERKEHRSSICHERHEIT IM GEMEINDEVERGLEICH UNTER EINBEZIEHUNG KOMMUNALER BEZUGSGRÖßEN ;** RISSER A.
KfV – Institut für Verkehrstechnik; Wien 2003

Accident

Injury road accidents are defined as accidents that are related to road traffic where persons suddenly become injured, are killed, or receive other damages to their health. This event must take place in a public area. Additionally at least one moving vehicle has to be involved.

Participants

The following persons are so-called participants in an accident:

- all injured and killed pedestrians, drivers or passengers,
- all non-injured drivers,
- all non-injured passengers, including those under the influence of alcohol, that obstructed the driver
- all non-injured pedestrians, in particular those under the influence of alcohol, if they were involved in the accident due to their behavior.

Active Participants

Active participants include all vehicle drivers and involved pedestrians.

Driver

A driver is any person who steers a vehicle, leads a draft, pack, or saddled animal, is riding an animal or drives herds.

Pedestrians

Also includes persons who push a baby carriage or a vehicle, or who are busy at a vehicle.

Passive Participants

All passengers.

Passenger

Each person that is in or on a vehicle, besides the driver.

Children

People aged between 0 and 14 years.

Child accident

An accident where at least one active participant is a child between the age of 0 to 14 years.

Seniors

People who are 65 years or older.

Alcohol related accidents

An alcohol related accident is when at least one active participant is under the influence of alcohol, an alcohol test is positive or a clinical study shows that one was under the influence of alcohol.

"A person is legally impaired by alcohol with a blood alcohol level of 0.8 g/l (0.8 per mill) and above, or with a breath alcohol level of 0.4 mg/l and above" (cp. StVO §5 para. 1). Since 6 January 1998, a motor vehicle may only "be operated or driven if the driver has a blood alcohol level less than 0.5 g/l (0.5 per mill), or a breath alcohol level less than 0.25 mg/l" (cp. FSG §14 para. 8).

Wrong Way Drivers

Drivers of vehicles, which drive against the flow of traffic on motorways.

Casualties

Persons who are either injured (severe, slight, or unknown severity) or killed.

Injured

The classification of the degree of injury severity is according to the regulations of the Austrian Criminal Code (StGB).

Fatality

A fatality in road accidents in Austria is a person who died immediately, or within 30 days, due to the road accident. In the years 1966-1991, a road accident fatality was defined as one who died immediately, or within 72 hours. In order to make these data comparable, they were multiplied by a factor of 1.12.

Severely injured

Whether an injury is severe or slight is determined by §84 of the Austrian criminal code (StGB). A severe injury is one that causes a health problem or occupational disability longer than 24 days, or one that "causes personal difficulty". An injury or health problem that "causes personal difficulty" is one that affects an "important organ", if it results in a "health disadvantage", if the "healing process is uncertain", or if it leads to the fear of "additional effects".

Severity of injury unknown

The degree of severity is unknown if it is not possible for the responsible medical party or the doctor to determine the severity of the injury (this should be avoided when possible).

