

Research Letter – Transport & Mobility

RoadPACE: Road Partners in Central and Eastern Europe

The network RoadPACE (Road Partners Central and Eastern Europe) is targeted at overcoming the current deficiencies in collection, compilation, management and exploitation of safety-relevant road information. These deficiencies are a causal factor to accidents and inefficient use of taxpayer money.

Therefore, RoadPACE aims at the development of a stable network of innovative companies with expertise in safety and maintenance related information management and service provision.

Objectives

- To establish, between 2007 and 2009, a stable network of innovative S.M.E. companies in Austria and the Czech Republic
- To develop a platform for joint R&D as well as marketing activities
- To carry out feasibility studies and component definitions in different areas of safety work
- To enlarge the network to further countries in the CEE region

Method

RoadPACE tackled the above challenges by providing a vision of high-quality data to be made available for road safety and maintenance management. In order to achieve this goal, innovative tools in the areas of data collection and integration as well as site monitoring were defined.

All partners of the consortium have substantial experience in the field and do already provide safety and maintenance related services to road operators.



Feasibility studies and component definitions were carried out in the areas of

- Management and monitoring of high risk sites
- Inventories of road signs and other road equipment
- Advanced accident data collection

Problem views and potential solutions were discussed with stakeholders in Austria and the Czech Republic during several workshops in both countries, involving representatives from Ministries of Transport, Home Offices, Traffic Police, Road Administrations, Statistics Bureaus, regional and local authorities.

Network Partners

The Austrian Road Safety Board (**Kuratorium für Verkehrssicherheit, KfV**) has co-ordinated several national and European R&D projects in the road safety field, e.g. on advanced accident data collection and comparative statistics. www.kfv.at

PRISMA solutions has developed tools for supporting e-Government processes for automatic generation of road furniture data (such as traffic signs and road markings). www.prisma-solutions.at

SMARTSPECTOR artificial perception engineering designs and commercialises smart vision-systems for ITS-applications and other industries. www.smartspector.com

Technisches Büro Ambrosch is active in the design of applications that automatically evaluate information gained from widespread (distributed) systems with a variety of sensors, such as electronic toll systems or traffic management systems. www.physik.at/tb.ambrosch

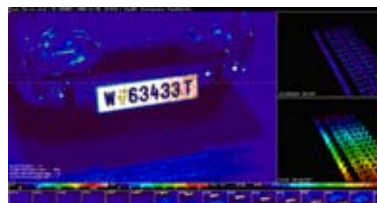
VARS has developed several systems for data integration and presentation together with specialised tools for data analysis including a programme for automatic detection of accident high risk sites. www.vars.cz

CEDA is the Czech partner of TeleAtlas and has extensive experience in the creation of traffic oriented databases such as navigation databases. www.ceda.cz

CDV (Czech Transport Research Centre) has broad experience in European road safety work and has contracted applications in dedicated fields of safety management, such as accident information systems. www.cdv.cz

Further information on www.kfv.at/roadpace

Results



Smartpector Pumilio™



Infobesi



ISMaP

Smartpector Pumilio™, a smart detection system for the enforcement of red lights and stop signs, e.g. at railway level crossings. The system features on-board identification of licence plates.

Infobesi, a GPS/GIS based system for accident data acquisition and analysis, for use by traffic police in the Czech Republic.

ISMaP: Provides tools for uniform registration and evaluation of facility status regardless of road classes. The core functionalities are: Asset Management, work records and traffic signs.

Runtime:

Oct. 2007 – March 2009

Funding:

FFG Austria, under the CIR-CE Programme



CIR-CE is an RTDI funding programme developed and implemented by FFG on behalf of the Austrian Federal Ministry for Economic Affairs and Labour (BMWA)

